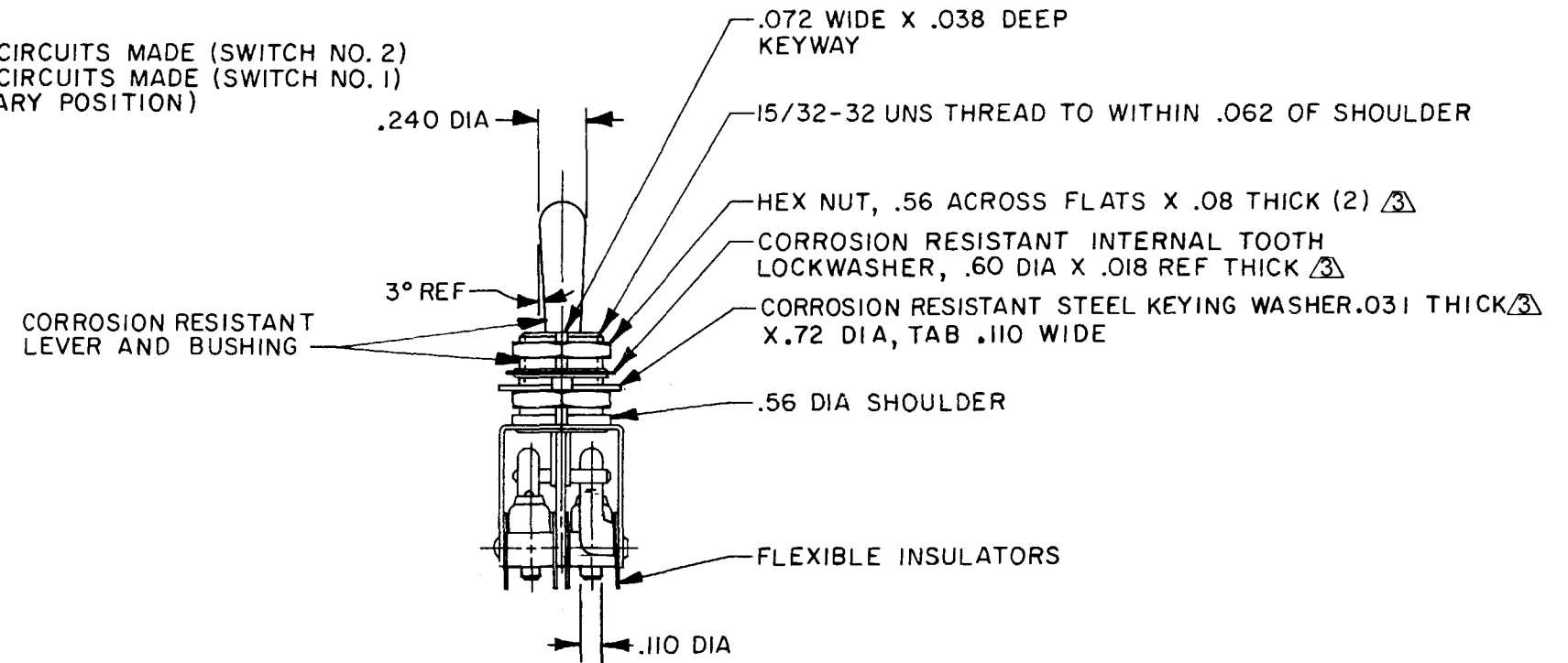
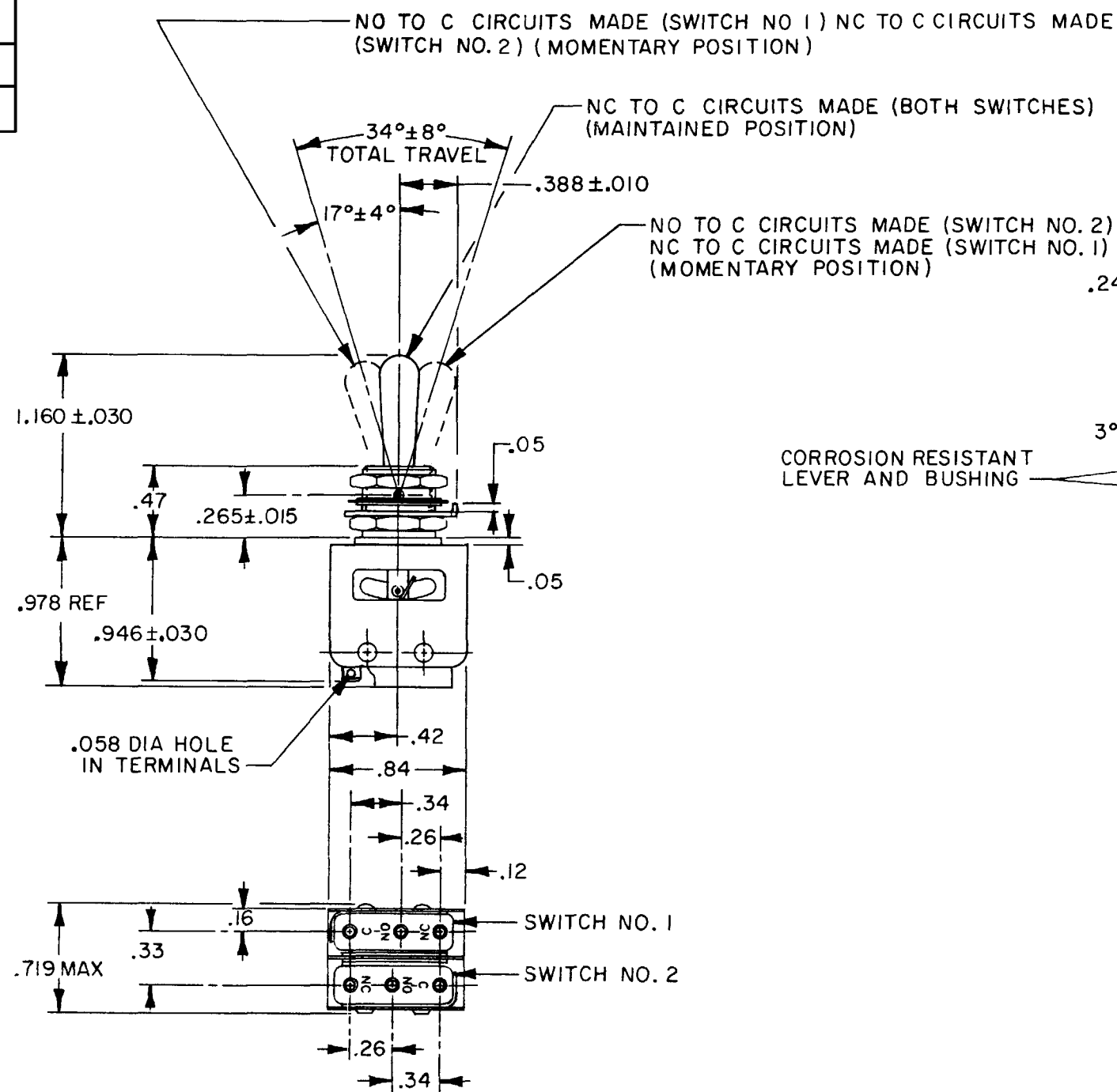


HONEYWELL
PART NUMBER
13AT1
FAA-PMA

| REV | DOCUMENT | CHANGED BY | CHECK |
|-----|----------|------------|-------|
| 17 | 0007403 | KR 24AUG04 | AK |



NOTES

- 1 - UNIT INCLUDES CATALOG LISTING 1SM1 TYPE BASIC SWITCH (2)
- 2 - TERMINALS ARE PLATED FOR SOLDERING
- HARDWARE FURNISHED ASSEMBLED WITH SWITCH OR IN PACKET PER MIL-PRF-8805
- 4 - REPLACEMENT MOUNTING HARDWARE PACKET 15PA312-AT
- 5 - MARK CATALOG LISTING, DATE CODE AND FAA-PMA ON SIDE OF SWITCH
- FOR MANUFACTURING DETAIL SEE ASSEMBLY DRAWING 13AT1 FOR FAA-PMA
- 7 - WEIGHT: .06 LB

| ELECTRICAL DATA | |
|------------------------------------|--|
| CONTACT ARRANGEMENT S P D T (2) | |
| 250 VAC | 5 AMP |
| 30 VOLTS DC RATING | |
| INDUCTIVE | SEA LEVEL-- 3 AMP 50,000 FT-- 2.5 AMP |
| RESISTIVE | SEA LEVEL-- 5 AMP 50,000 FT-- 5 AMP |
| MAXIMUM INRUSH | 24 AMP |

| |
|--------------------------|
| DESIGN UNITS: INCH |
| TOLERANCES UNLESS NOTED: |
| NO PLACE X ± |
| ONE PLACE .X ± 0.030 |
| TWO PLACE .XX ± 0.015 |
| THREE PLACE .XXX ± 0.005 |
| FOUR PLACE .XXXX ± |
| ANGLES ± |
| THIRD ANGLE PROJECTION |
| |

| | | |
|--|-----|---------|
| DRAWN | SLB | 06JUN83 |
| CHECK | | |
| THIS DRAWING COVERS A PROPRIETARY ITEM AND IS THE PROPERTY OF HONEYWELL. THIS DRAWING IS NOT TO BE COPIED OR USED WITHOUT THE PERMISSION OF HONEYWELL. | | |
| INTERPRET PER ASME Y14.5M-1994 OTHER HONEYWELL ENGINEERING STANDARDS MAY APPLY | | |
| RASTER | | |

| | | | |
|--|----------|--------------|-----------|
| Honeywell | | | |
| TITLE ASSEMBLY - TOGGLE SWITCH | | | |
| SIZE | TYPE | DRAWING NAME | REV |
| B | I | 13AT1 | 17 |
| SCALE | 1:1 | SHEET | 1 OF 1 |