

# MICRO SWITCH

A DIVISION OF MINNEAPOLIS-HONEYWELL REGULATOR COMPANY  
PINEBROOK, ILLINOIS

FED. MFR. CODE 91929

# ASSEMBLY - TOGGLE SWITCH

CATALOG LISTING

## IIAT20

CATALOG LISTING  
**IIAT20**  
PAGE 1 OF 1

REPLACES  
**M**  
DRAWING NUMBER

ISSUE  
**9**

REVISIONS

A	CO 16255	KLB	15 SEP 61
B	CO16594	D W V	3 JAN 62
C	CO17248	M B F	23 AUG 62
D	CO-58771	KAG	12 FEB 66
E	CO 59602	KAG	AUG 66
F	204266	CSL	5 NOV 01

RELEASE NO.

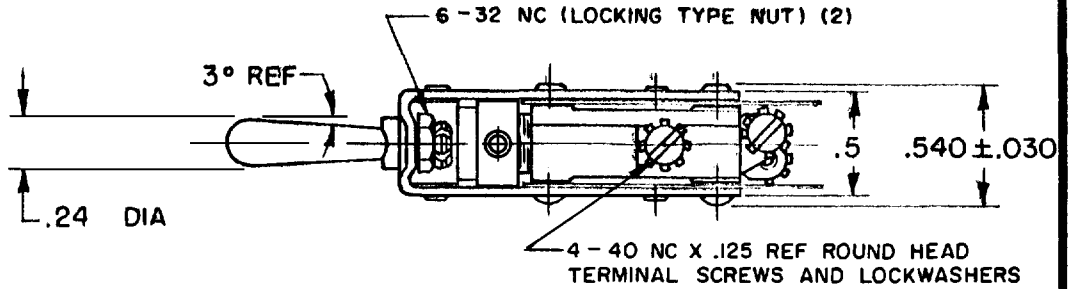
CHECK WRD 18 SEP 61

CHECK WRO 18 SEP 61

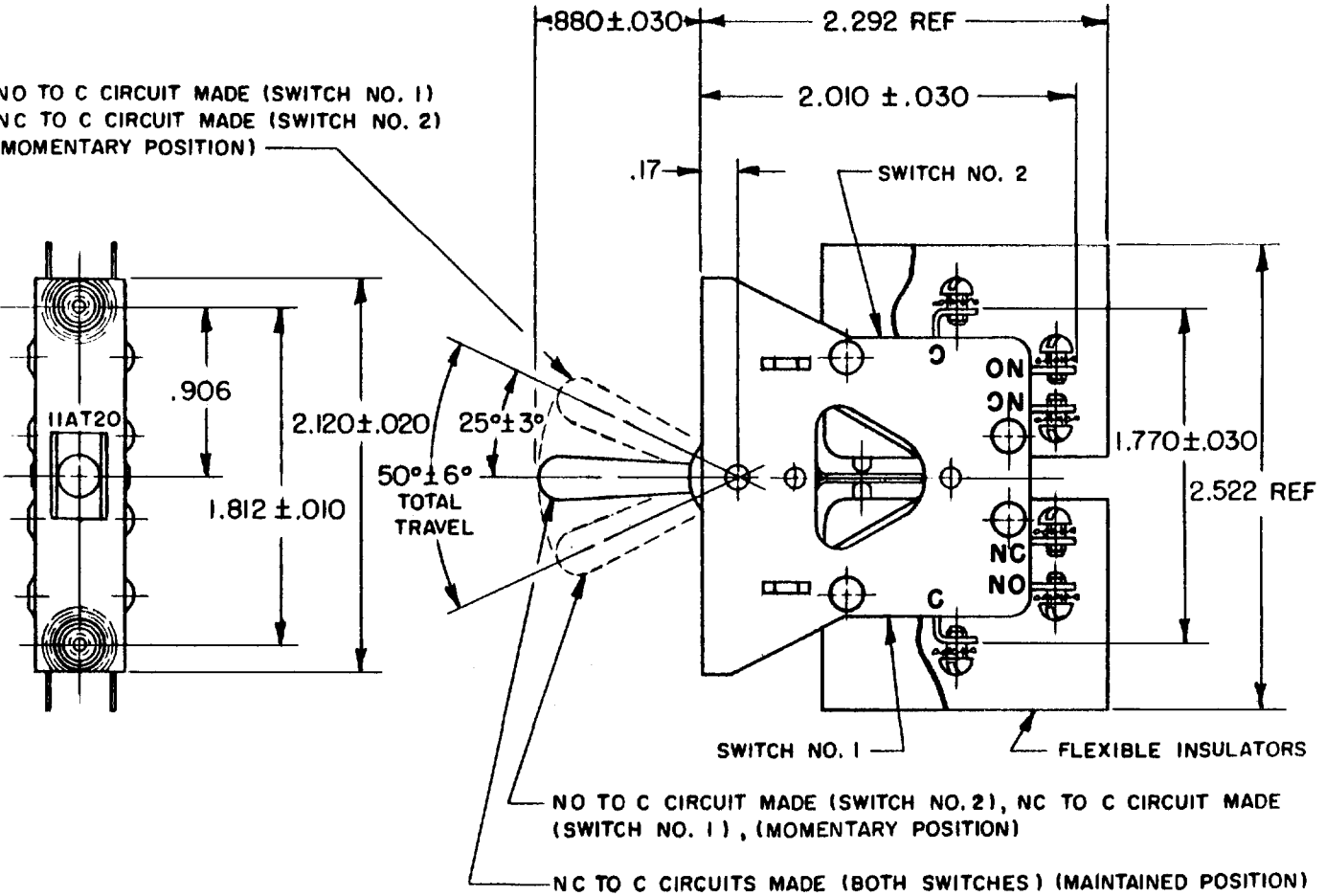
CHECK DAW 15 SEP 61

DRAWN  
K L B 15 SEP 61

FO-80378



NO TO C CIRCUIT MADE (SWITCH NO. 1)  
NC TO C CIRCUIT MADE (SWITCH NO. 2)  
(MOMENTARY POSITION)



### NOTE

1 - UNIT INCLUDES CATALOG LISTING V3-201 BASIC SWITCH (2)

THIS DRAWING COVERS A PROPRIETARY ITEM AND IS THE PROPERTY OF MICRO SWITCH, A DIVISION OF MINNEAPOLIS-HONEYWELL REGULATOR CO. THIS DRAWING IS NOT TO BE COPIED OR USED WITHOUT THE APPROVAL OF MICRO SWITCH.

### CHARACTERISTICS

### ELECTRICAL DATA

SCALE FULL

CONTACT ARRANGEMENT  
S P D T (2)

BREAK DISTANCE  
.040 APPROX

DO NOT SCALE PRINT

15 A - 1/3 HP - 125 OR 250 VAC  
1/2 A - 125 VDC; 1/4 A - 250 VDC

UNLESS OTHERWISE SPECIFIED

DIMENSIONS ARE IN INCHES

TOLERANCES ARE:

ONE PLACE (.0) ± .030  
TWO PLACE (.00) ± .015  
THREE PLACE (.000) ± .005  
ANGLES ±

WEIGHT .156 LB