

EPIC® Connector Accessories

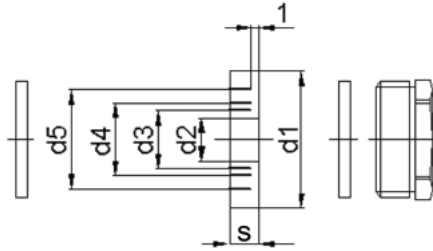
Glands, Seal Rings, & Adapters

EPIC® SM



Body Material: Nickel Plated Brass
Temperature: -40°C to 125°C

EPIC® SM & SP GLANDS



EPIC® SP



Body Material: Polystyrol
Temperature: -20°C to 55°C

PG PARTS

PG	EPIC® SM Part #	EPIC® SP Part #	d1	d2	Cable	d3	Cable	d4	Cable	s	SW EPIC SW	SW EPIC SP
9	12954100	-	13.3	5	4 - 6	7.5	6.5 - 8.5	10	9 - 11	5.5	15	-
11	12954200	12957100	16.5	7.5	6.5 - 8.5	10	9 - 11	12.5	11.5 - 13.5	6	18	19
13.5	12954300	12957200	18.3	7.5	6.5 - 8.5	10	9 - 11	12.5	11.5 - 13.5	6	20	21
16	12954400	12957300	20.4	7.5	6.5 - 8.5	10	9 - 11	12.5	11.5 - 13.5	7	22	23
21	12954500	12957400	25.9	10	9 - 11	13	12 - 14	16	15 - 17	8	28	30
29	12954600	-	34.7	18	17 - 19	21	20 - 22	24	23 - 25	9.5	37	-
36	12954700	-	44.7	24	23 - 25	27	26 - 28	30	29 - 31	12	47	-
42	12954800	-	51.7	30	29 - 31	33	32 - 34	36	35 - 37	14	54	-

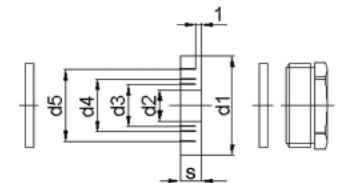
METRIC PARTS

M	EPIC® SM-M Part #	d1	d2	Cable	d3	Cable	d4	Cable	d5	Cable	s	SW	Standard Pack
12	71200000	10	5	4 - 6	-	-	-	-	-	-	5	12	5
16	71200100	13.8	3	2 - 4	6	5 - 7	9	8 - 10	-	-	5.5	16	5
20	71200200	17.6	4	3 - 5	7	6 - 8	10	9 - 11	13	12 - 14	6	20	5
25	71200300	22.6	8.5	7.5 - 9.5	11.5	10.5 - 12.5	14.5	13.5 - 15.5	17.5	16.5 - 18.5	7.5	25	5
32	71200400	29.6	16	15 - 17	19	18 - 20	22	21 - 23	25	24 - 26	9.5	32	5
40	71200500	37.6	23	22 - 24	26	25 - 27	29	23 - 28	32	31 - 33	12	40	5
50	71200600	47.6	30	29 - 31	33	32 - 34	36	35 - 37	39	38 - 40	14	50	5

EPIC® CM-M GLANDS



Body Material: Nickel Plated Brass
Protection Class: IP 54 (DIN 46320)
Temperature: -40°C to +125°C



M	EPIC® SM-M Part #	d1	d2	Cable	d3	Cable	d4	Cable	d5	Cable	s	SW	Standard Pack
16	71201100	13.8	5	2 - 4	6	5 - 7	9	8 - 10	-	-	5.5	19	5
20	71201200	17.6	4	3 - 5	7	6 - 8	10	9 - 11	13	12 - 14	6	23	5
25	71201300	22.6	8.5	7.5 - 9.5	11.5	10.5 - 12.5	14.5	13.5 - 15.5	17.5	16.5 - 18.5	7.5	28	5
32	71201400	29.6	16	15 - 17	19	18 - 20	22	21 - 23	25	24 - 26	9.5	36	5
40	71201500	37.6	23	22 - 24	26	25 - 27	29	23 - 28	32	31 - 33	12	46	5
50	71201600	47.6	30	29 - 31	33	32 - 34	36	35 - 37	39	38 - 40	14	55	5

SW= Wrenching Flats

Dimensions are in mm.

EPIC® Connector Accessories

Glands, Seal Rings, & Adapters

D SERIES: PRESSURE SCREWS

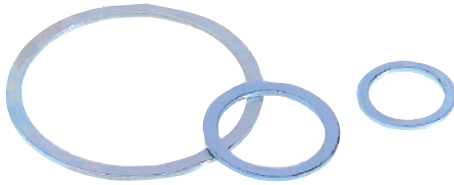


Body Material: Nickel Plated Brass
DIN 46320

PG	Part Number	Wrench Size	Standard Pack
7	52100200	13	100
11	52100220	18	100
16	52100240	22	50
21	52100250	28	50
29	52100260	37	25
36	52100270	47	10

All dimensions are in mm.

U SERIES WASHERS



Body Material: Galvanized Steel
DIN 46320

PG	Part Number	Ext. Diameter x Int. Diameter x Thickness	Standard Pack
7	52010170	11 x 8 x 0.8	100
9	52010180	13.5 x 10 x 0.8	100
11	52010190	17 x 12 x 0.8	100
13.5	52010200	18.5 x 14 x 0.8	100
16	52010210	20.5 x 16 x 0.8	50
21	52010220	26 x 21 x 0.8	50
29	52010230	35 x 30 x 0.8	25
36	52010240	45 x 38 x 0.8	10

All dimensions are in mm.

E SERIES: NEOPRENE CONCENTRIC SEALING RINGS

These rings can be individually adapted to various cable diameters by removing the appropriate sizes. Also suitable for half glands.



All dimensions are in mm.

PG	Part Number	Outside Diameter x Bore	Standard Pack
9	52005780	13.5 x 5/8	500
11	52003690	16.5 x 7/10/12.5	500
13.5	52003700	18.5 x 7/10.5/13/16	500
16	52003710	20.5 x 8/10.5/13.5/16	500
21	52003720	26 x 11/15/18/20	100
29	52003730	35 x 19/23/27/31	100
36	52003740	45 x 25/28/31/35	50

EV SERIES: VITON CONCENTRIC SEALING RINGS



Body Material: Viton
Temperature: up to 165°C

All dimensions are in mm.

PG	Part Number	Outside Diameter x Bore	Standard Pack
11	52010340	16.5 x 7/10/12.5	50
13.5	52010350	18.5 x 7/10.5/13/16	50
21	52010370	26 x 11/15/18/20	25
29	52010380	35 x 19/23/27/31	25

FLAT GASKETS FOR PANEL MOUNT BASES

Part #	For:	Part #	For:
00004240	HBE 6 Base	00002722	HA 3/4 Base
00004242	HBE 10 Base	00021610	HA 10 Base
00004243	HBE 16 Base	00021630	HA 16 Base
00004244	HBE 24 Base	00002680	HA 32 Base
00002660	HBE 32 Base		
00004520	HBE 48 Base		

EPIC® Connector Accessories

Glands, Seal Rings, & Adapters

PG TO NPT / NPT TO PG/ METRIC TO PG ADAPTERS/ METRIC TO NPT ADAPTERS



Body Material: Nickel Plated Brass
DIN 46320

[For Product Specification, see Page 529](#)

METAL BLANKING PLUGS



Hole plugs are for use when existing PG threaded holes are not yet, or no longer required.

Body Material: Nickel Plated Brass

[For Product Specification, see Page 527](#)

REDUCERS



Body Material: Nickel Plated Brass
DIN 46320

[For Product Specification, see Page 528](#)

METRIC TO PG ADAPTERS



Body Material: Brass

[For Product Specification, see Page 529](#)

ENLARGERS



Body Material: Nickel Plated Brass
DIN 46320

[For Product Specification, see Page 528](#)