

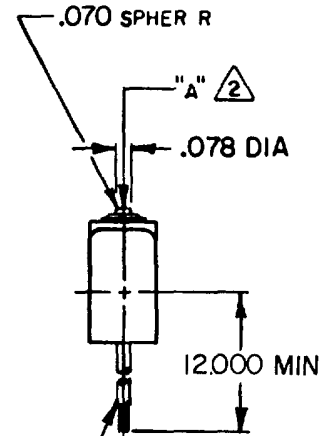
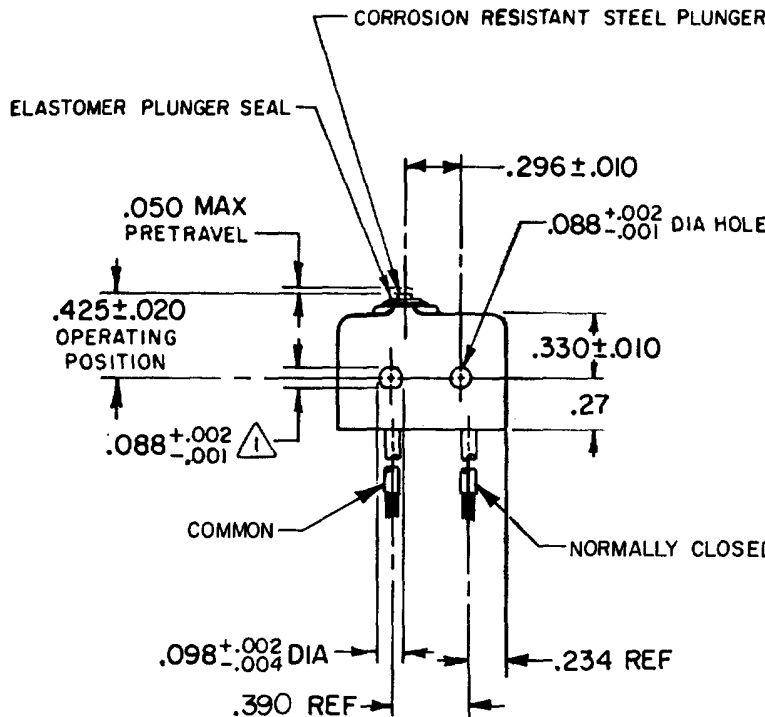
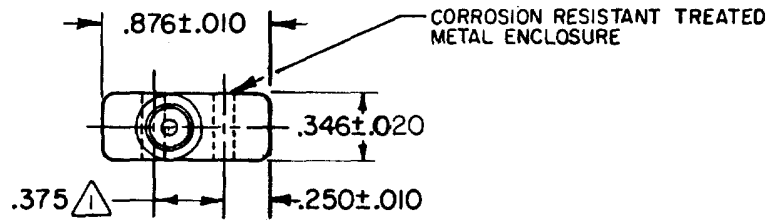
MICRO SWITCH

FREERPORT ILLINOIS, U.S.A
A DIVISION OF HONEYWELL
FED. MFG. CODE 91929

SWITCH-BASIC

CATALOG LISTING

ISE 2



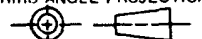
(2) NO. 20 WIRE LEAD PER MIL-W-22759/11 EMBEDDED IN EPOXY CASTING RESIN

NOTES

- ① MOUNTING HOLES WILL ACCEPT .087 MAX DIA PINS OR SCREWS ON .375±.002 CENTERS
- ② ACTUATION IN LINE WITH ARROW "A" IS RECOMMENDED
- ③ WEIGHT OF SWITCH ONLY IS .26 OZ MAX WEIGHT OF SWITCH WITH WIRE LEADS IN .51 OZ MAX

THIS DRAWING COVERS A PROPRIETARY ITEM AND IS THE PROPERTY OF MICRO SWITCH, A DIVISION OF HONEYWELL. THIS DRAWING IS NOT TO BE COPIED OR USED WITHOUT THE APPROVAL OF MICRO SWITCH.

THIRD ANGLE PROJECTION



CHARACTERISTICS

OPERATING FORCE-----5- 17 OZ
RELEASE FORCE-----4 OZ MIN
RELEASE TRAVEL-----.004 MIN
DIFFERENTIAL TRAVEL-----.004 MAX
OVERTRAVEL-----.003 MIN

ELECTRICAL DATA

CONTACT ARRANGEMENT
S P N C
250 VAC-----5 AMP
30 VOLTS DC RATING
INDUCTIVE-----SEA LEVEL-- 3 AMP
50,000 FT-- 2.5 AMP
RESISTIVE-----SEA LEVEL-- 5 AMP
50,000 FT-- 5 AMP
MAXIMUM INRUSH-----24 AMP

SCALE FULL

DO NOT SCALE PRINT

TOLERANCES

APPLY TO DESIGN UNITS. CONVERSIONS ARE ONLY FOR REFERENCE. UNLESS NOTED, TOLERANCES ARE Z

NO PLACES	DIM.	TOL.	DIM.	TOL.
	mm	mm/in	in	mm/in
ONE PLACE	X	1/32	X	0.075
TWO PLACES	X,X	0.015	X,X	0.38/0.10
THREE PLACES	X,X,X	0.008	X,X,X	0.13/0.06
ANGLES				

DESIGN UNITS SI METRIC

US CUSTOMARY

WEIGHT ③

ISE 2 PAGE 1 OF 1
 M DRAWING NUMBER
 ISSUE 912
 RELEASE NO. SR-4440
 REPLACES
 CHECK
 REVISIONS
 A CO 51463 6 J W 14 JUL 82
 B CO57041A CJH MAR 85
 C CO70390 L J F 28 SEP 91
 D CO94274 D L M MAR 99
 CHECK
 22 JUL 82
 6 J W 14 JUL 82
 FORMTEK
 FO-52848-A
 DRAWN