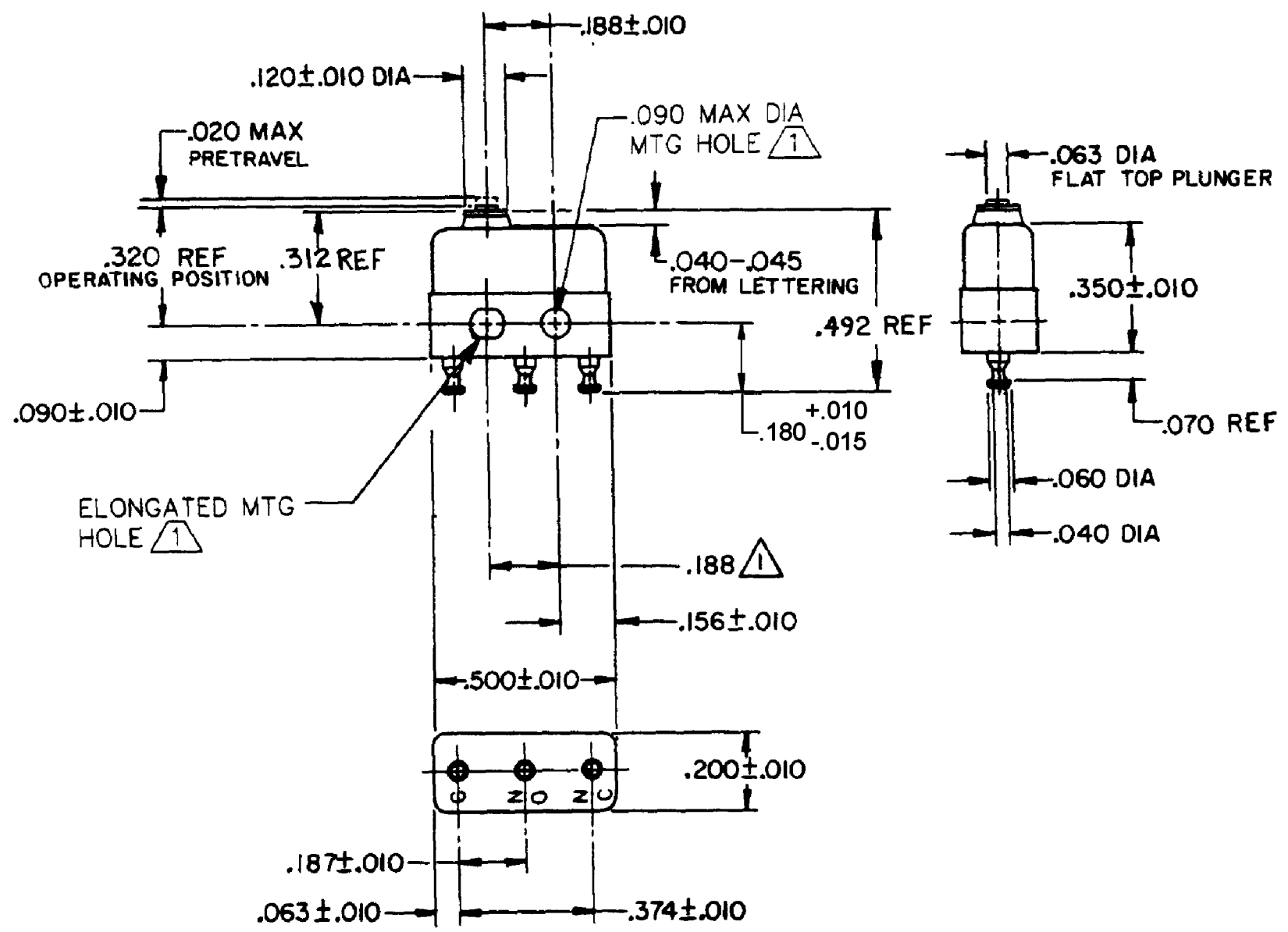
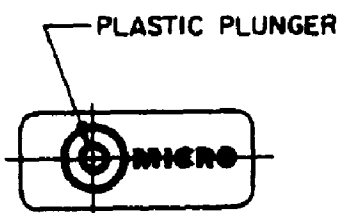


HONEYWELL
PART NUMBER
12SX15-T
PRODUCT CODE
VDK1117

REV	DOCUMENT	CHANGED BY	CHECK
7	0060324	VKR 13JAN10	CMH



NOTES

- 1 MOUNTING HOLES WILL ACCEPT PINS OR SCREWS OF .087 MAX DIA ON .188±.002 CENTERS.
- 2 - TERMINALS ARE SOLDER DIPPED WITH RoHS COMPLIANT TIN/COPPER/SILVER SOLDER.
- 3 - SWITCH WILL WITHSTAND TEMPERATURE OF 250°F
- 4 - MOVABLE CONTACT MATERIAL - 24K SOLID GOLD
- 5 - STATIONARY CONTACT MATERIAL - GOLD ALLOY
- 6 - PLUNGER WILL BE FLUSH TO UNDERFLUSH AT FULL OVERTRAVEL

RELEASE NO.	PR-16094
REPLACES	X87835-SX

CHARACTERISTICS
OPERATING FORCE - - - - 5 OZ MAX
RELEASE FORCE - - - - 1 OZ MIN
DIFFERENTIAL TRAVEL - - - .003 MAX
OVERTRAVEL - - - - - .003 MIN

ELECTRICAL DATA	
CONTACT ARRANGEMENT SPDT	
28 VOLTS DC RATING	
SEA LEVEL	
INDUCTIVE	0.5 AMP
RESISTIVE	1.0 AMP

DESIGN UNITS: INCH
TOLERANCES UNLESS NOTED:
NO PLACE X ±
ONE PLACE .X ±
TWO PLACE .XX ±
THREE PLACE .XXX ±
FOUR PLACE .XXXX ±
ANGLES ±
THIRD ANGLE PROJECTION

DRAWN	VK	05 MAR 08
CHECK	RJ	05 MAR 08
THIS DRAWING COVERS A PROPRIETARY ITEM AND IS THE PROPERTY OF HONEYWELL. THIS DRAWING IS NOT TO BE COPIED OR USED WITHOUT THE PERMISSION OF HONEYWELL.		
INTERPRET PER ANSI Y14.5M-1982 OTHER HONEYWELL ENGINEERING STANDARDS MAY APPLY		
RASTER		

Honeywell			
TITLE SWITCH - BASIC			
SIZE	TYPE	DRAWING NAME	REV
B	I	12SX15-T	7
SCALE	-	WEIGHT .003 LB MAX	SHEET 1 OF 1