

CATALOG LISTING
12TL1 SERIES CHART 2
PAGE 1 OF 1
ISSUE 15
MOM 05 FEB 04
CHECK 05 FEB 04
RELEASE NO. RR-3336

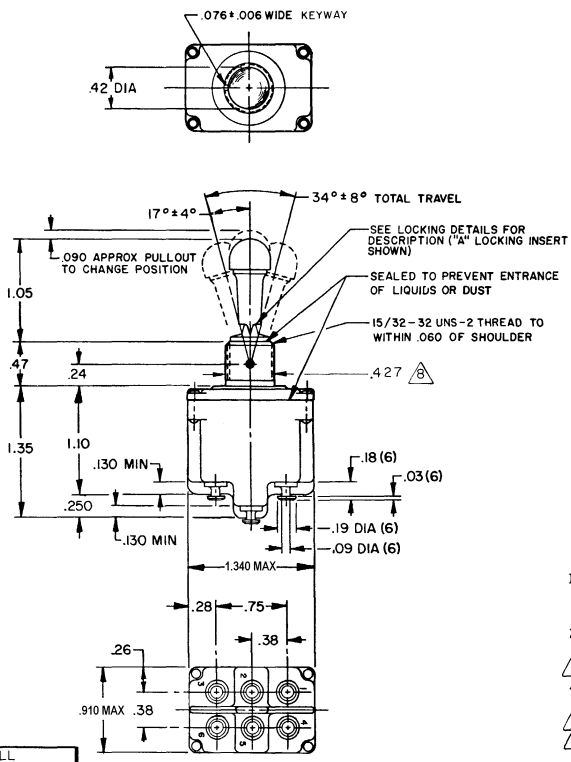
REVISIONS
A 00 38332
B 28 MAR 78 49076
C 16 MAY 81 53791
D 0050496
E 0056074
F 0292297
G 28 MAR 78 34428
H 0003086
I 05 FEB 84

FORMTEK
DRAWN
T M M 28 MAR 78
CHECK C E B 2 APR 78
CHECK 05 FEB 84

MICRO SWITCH
FREEPORT, ILLINOIS, U.S.A.
A DIVISION OF HONEYWELL
FED. MFG. CODE 91929

CATALOG LISTING
12TL1 SERIES
SWITCH-TOGGLE
CHART 2

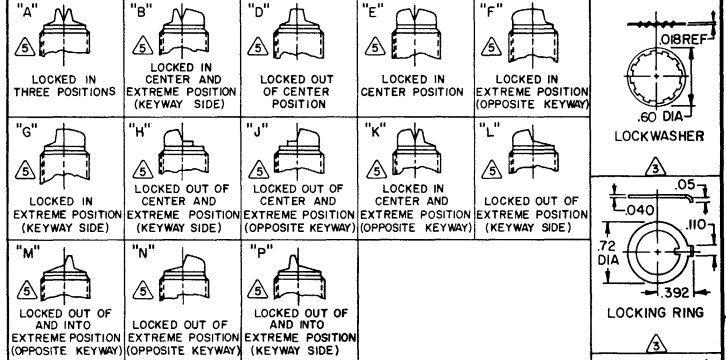
THIS DRAWING COVERS A PROPRIETARY ITEM AND IS THE PROPERTY OF MICRO SWITCH, A DIVISION OF HONEYWELL. THIS DRAWING IS NOT TO BE COPIED OR USED WITHOUT THE APPROVAL OF MICRO SWITCH.



SCALE FULL
DO NOT SCALE PRINT
UNLESS OTHERWISE NOTED
DIMENSIONS ARE IN INCHES
TOLERANCES ARE:
ONE PLACE (±.01) ±.030
TWO PLACE (±.001) ±.018
THREE PLACE (±.0001) ±.008
ANGLES 1/16

| | |
|--------------------------------|----------------------------------|
| 15A-125, 250 OR 277 VAC | 10A-125, 250, 277 VAC |
| 1/2HP-125VAC; 1HP-250, 277 VAC | 1/4HP-125VAC; 1/2HP-250, 277 VAC |
| 5A-125VAC "L" CODE L191 | 3A-125VAC "L" CODE 192 |

| MILITARY STANDARD NUMBER | CATALOG LISTING | AVAILABLE LOCKING COMBINATIONS FOR CONFIGURATION SEE LETTERED DETAILS | CIRCUIT MADE WITH TOGGLE LEVER IN | | | MILITARY RATING (AMPS) | | | | | | | | |
|--------------------------|-----------------|---|-----------------------------------|-------------------|----------------------------|-------------------------------|-----------|------------------|-----------------------|---|---|---|----|----|
| | | | KEYWAY SIDE (1-2, 4-5) | CENTER (1-2, 4-5) | OPPOSITE KEYWAY (2-3, 5-6) | RESISTIVE LOAD DC VOLTS | IAC VOLTS | LAMP LOAD 28 VDC | INDUCTIVE LOAD 28 VDC | | | | | |
| MS 27738-21 | I2TL1-1 | A,B,D,E,F,G,H,K,L,M,N,P | ON | OFF | ON | 20 | 75 | 5 | 15 | 6 | 7 | 4 | 15 | 15 |
| MS 27738-22 | I2TL1-2 | D, F, G | OFF | NONE | ON | (REFER TO L191 FOR UL RATING) | | | | | | | | |
| MS 27738-23 | I2TL1-3 | D, F, G | ON | NONE | ON | | | | | | | | | |
| MS 27738-24 | I2TL1-21 | E, F, K, M | NONE | OFF | ON | | | | | | | | | |
| MS 27738-33 | I2TL1-31 | E, F, K, M | NONE | ON | ON | | | | | | | | | |
| MS 27738-29 | I2TL1-4 | F | MOM OFF | NONE | ON | | | | | | | | | |
| MS 27738-31 | I2TL1-5 | E, F, K, L, M, N | MOM ON | OFF | ON | | | | | | | | | |
| MS 27738-30 | I2TL1-6 | F | MOM ON | NONE | OFF | | | | | | | | | |
| MS 27738-27 | I2TL1-7 | E, L, N | MOM ON | OFF | MOM ON | 18 | 75 | 5 | 11 | 6 | 5 | 2 | 10 | 8 |
| MS 27738-26 | I2TL1-8 | F | MOM ON | NONE | ON | | | | | | | | | |
| MS 27738-32 | I2TL1-51 | E | NONE | ON | MOM ON | (REFER TO L192 FOR UL RATING) | | | | | | | | |
| MS 27738-28 | I2TL1-61 | E | MOM ON | OFF | NONE | | | | | | | | | |



- NOTES
- SWITCHES ARE CAPABLE OF WITHSTANDING A TEMPERATURE OF 160°F CONTINUOUSLY AT FULL RATED LOAD
 - CIRCUIT DESIGNATION, MICRO SWITCH CATALOG LISTING, DATE CODE, UL RATING AND MS NUMBER IDENTIFIED ON SIDE OF SWITCH FURNISHED UNASSEMBLED
 - FOR TERMINAL COVER SEE MICRO SWITCH CATALOG LISTING 5PA8
 - KEYWAY SHOWN ON LEFT SIDE
 - SUFFIX LETTER MUST BE ADDED FOR DESIRED TYPE OF TOGGLE LOCKING. SEE CHART FOR AVAILABLE LOCKING COMBINATIONS
 - APPLIES ONLY TO "ON" AND "MOMENTARY ON" POSITIONS
 - FROM BOTTOM OF KEYWAY TO MAJOR DIA OF 15/32 THREAD