

19HM1

**M**

DRAWING  
NUMBER

2

ISSUE

REPLACES

RELEASE NO. PR-18755

CHECK

CHECK

28 DEC 90

D A W

CHECK

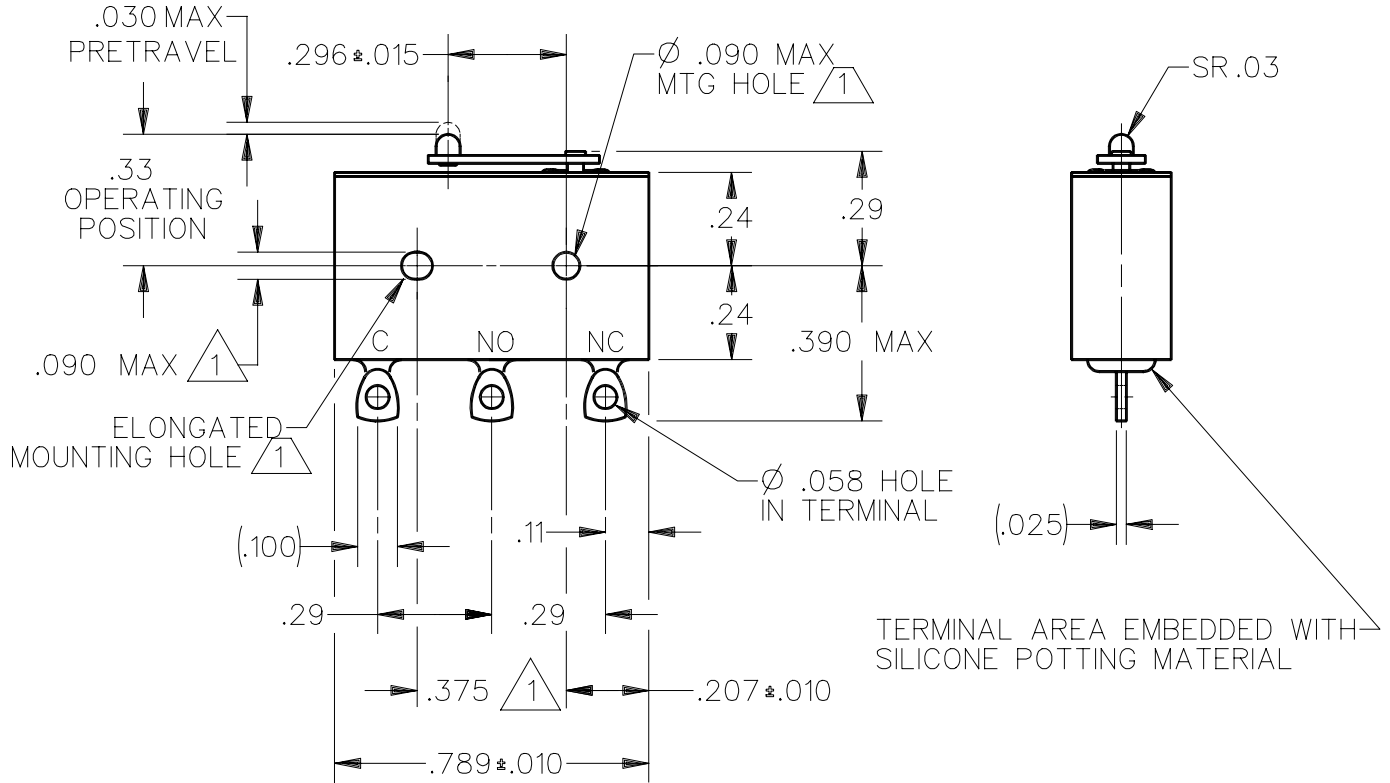
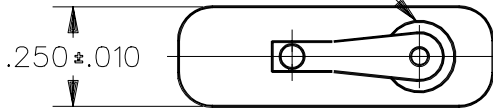
21 DEC 90

SAV

DDM/CAD

DRAWN

WOBBLEFRAM ACTUATOR SEAL

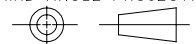


NOTES

- 1 MOUNTING HOLES WILL ACCEPT PINS OR SCREWS OF  $\phi$  .087 MAX ON .375 $\pm$ .002 CENTERS
- 2 - FOR USE IN TEMPERATURE RANGE -300°F TO +500°F
- 3 - HERMETICALLY SEALED (METAL-TO-METAL, GLASS-TO-METAL)
- 4 - ALL EXPOSED PARTS ARE OF CORROSION RESISTANT MATERIALS
- 5 - TERMINALS ARE TINNED FOR SOLDERING
- 6 - DO NOT: APPLY MORE THAN 1 1/2 INCH-LBS OF TORQUE WHEN TIGHTENING MOUNTING SCREWS
- 7 - 24K GOLD MOVABLE CONTACT AND GOLD ALLOY STATIONARY CONTACTS

THIS DRAWING COVERS A PROPRIETARY ITEM AND IS THE PROPERTY OF MICRO SWITCH, A DIVISION OF HONEYWELL. THIS DRAWING IS NOT TO BE COPIED OR USED WITHOUT THE APPROVAL OF MICRO SWITCH.

THIRD ANGLE PROJECTION



CHARACTERISTICS	ELECTRICAL DATA	SCALE 2 : 1	DO NOT SCALE PRINT
OPERATING FORCE — — — — 7 OZ MAX	CONTACT ARRANGEMENT S P D T	<b>UNLESS OTHERWISE SPECIFIED TOLERANCES ARE</b> ONE PLACE (.0) $\pm$ .030 TWO PLACE (.00) $\pm$ .015 THREE PLACE (.000) $\pm$ .005 ANGLES $\pm$ WEIGHT .014 LB MAX	
RELEASE FORCE — — — — 1 OZ MIN	28 VOLTS DC RATING INDUCTIVE -- SEA LEVEL - 1/4 AMP 70,000 FT - 1/4 AMP RESISTIVE -- SEA LEVEL - 1/2 AMP 70,000 FT - 1/2 AMP		
DIFFERENTIAL TRAVEL — — — .006 MAX			
OVERTRAVEL — — — — .003 MIN			