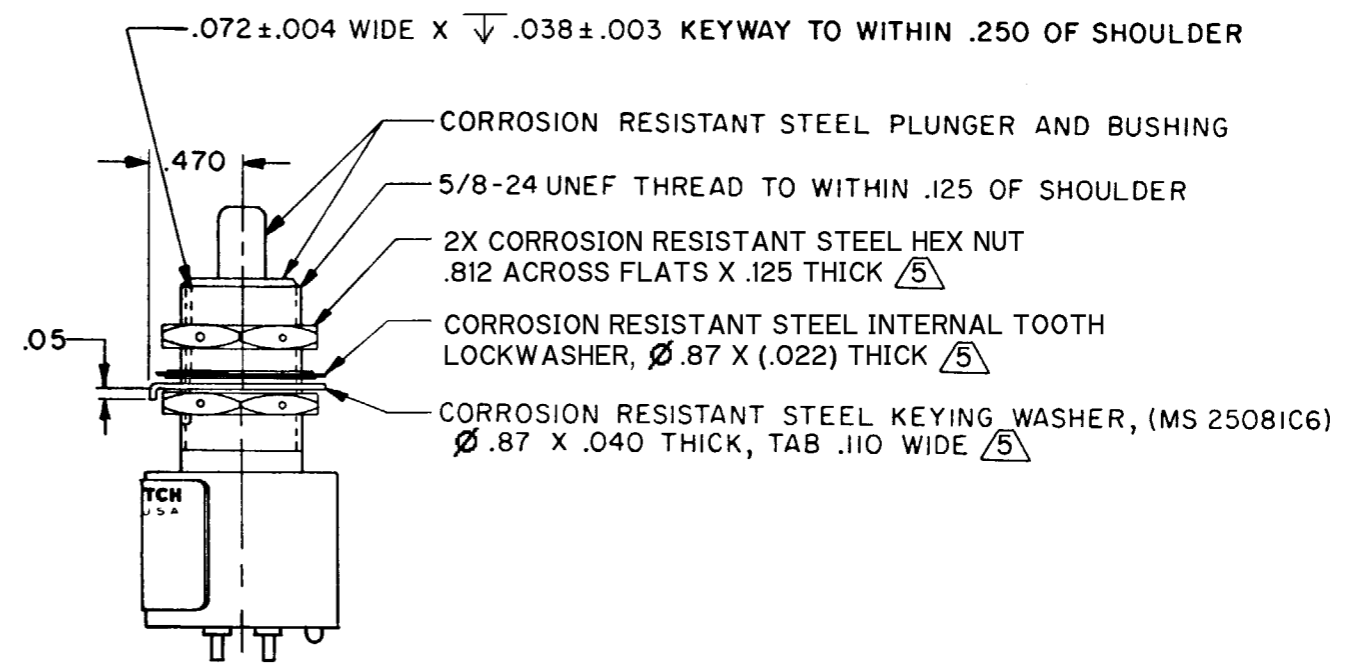
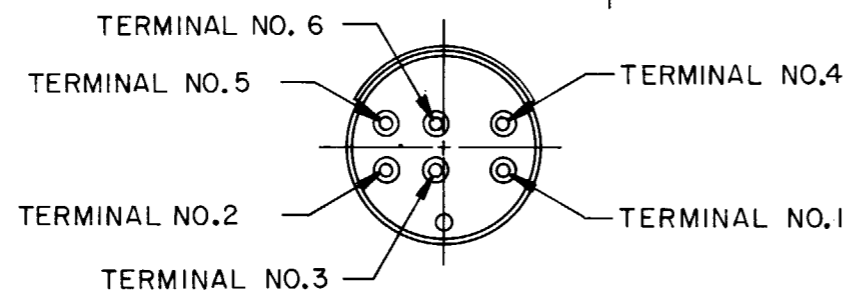
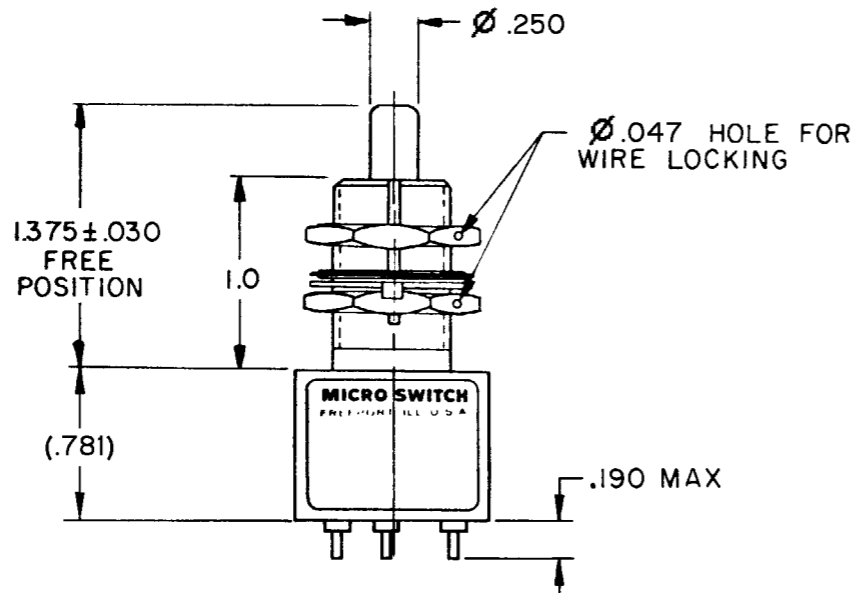
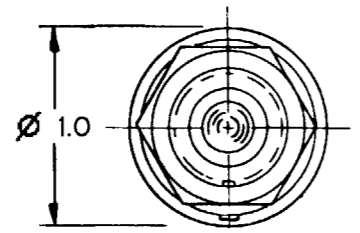
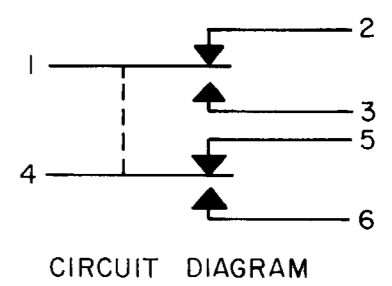


MICRO SWITCH
 FREEPORT, ILLINOIS, U.S.A.
 A DIVISION OF HONEYWELL
 FED. MFG. CODE 91929

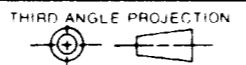
SWITCH-ENCLOSED

CATALOG LISTING
1EN199



CATALOG LISTING 1EN199
 PAGE 1 OF 1
 ISSUE 10
 RELEASE NO. SR-10908
 REPLACES
 CHECK
 REVISIONS
 A C044351
 J A P
 15 APR 79
 B C047573
 J A P
 5 AUG 80
 C CO-93970
 S A V
 12 JAN 99
 D 206898
 CSL
 4 DEC 02
 CHECK
 CEB 19 APR 79
 CHECK
 APR 79
 DRAWN
 RASTER
 J A P 15 APR 79

THIS DRAWING COVERS A PROPRIETARY ITEM AND IS THE PROPERTY OF MICRO SWITCH, A DIVISION OF HONEYWELL. THIS DRAWING IS NOT TO BE COPIED OR USED WITHOUT THE APPROVAL OF MICRO SWITCH.



SCALE FULL
 DO NOT SCALE PRINT

CHARACTERISTICS	
OPERATING FORCE	6-12 LB
FULL OVERTRAVEL FORCE	30 LB MAX
RELEASE FORCE	4 LB MIN
PRETRAVEL	.040 MAX
DIFFERENTIAL TRAVEL	.020 MAX
OVERTRAVEL	.250 MIN

ELECTRICAL DATA		
CONTACT ARRANGEMENT 2X S P D T		
LOAD	28 VDC	
	SEA LEVEL	50,000 FT.
RES	4	4
IND	2	2
MOTOR	4	

TOLERANCES			
APPLY TO DESIGN UNITS. CONVERSIONS ARE ONLY FOR REFERENCE. UNLESS NOTED, TOLERANCES ARE Z			
DIM.	TOL.	DIM.	TOL.
mm	mm/in	in	mm/in
NO PLACES	X	1/04	
ONE PLACE	X,X	0.4/016	X X 0.8/03
TWO PLACES	X,XX	0.15/006	X X X 0.38/015
THREE PLACES	X,XXX	0.15/006	X X X X 0.13/005
ANGLES			
DESIGN UNITS		<input type="checkbox"/> METRIC	<input checked="" type="checkbox"/> US CUSTOMARY
FOR MATERIAL-COMMERCIAL STANDARD MICRO SWITCH STANDARDS APPLY			
DIMENSIONS ARE TO BE MET BEFORE PROTECTIVE COATINGS ARE APPLIED			
WEIGHT 2.7 OZ MAX			

- NOTES
- ENCLOSURE FINISHED WITH GREEN EPOXY BASED ENAMEL COLOR 34151 PER FEDERAL STANDARD 595
 - SWITCH SEALED PER MIL-PRF-8805 SYMBOL 4
 - COINCIDENCE OF OPERATING AND RELEASING POINTS: .010 OF PLUNGER TRAVEL
 - CIRCUIT DIAGRAM, CATALOG LISTING, FED. MFG. CODE AND DATE CODE ARE SHOWN ON NAMEPLATE
- (5) HARDWARE MAY BE PACKAGED UNASSEMBLED PER MIL-PRF-8805

ANSI Y14.5M-1982 APPLIES