

CATALOG LISTING
12TL1 SERIES CHART 2
PAGE 1 OF 1
ISSUE 15
MOM 05 FEB 04
CHECK 05 FEB 04
RELEASE NO. RR-3336

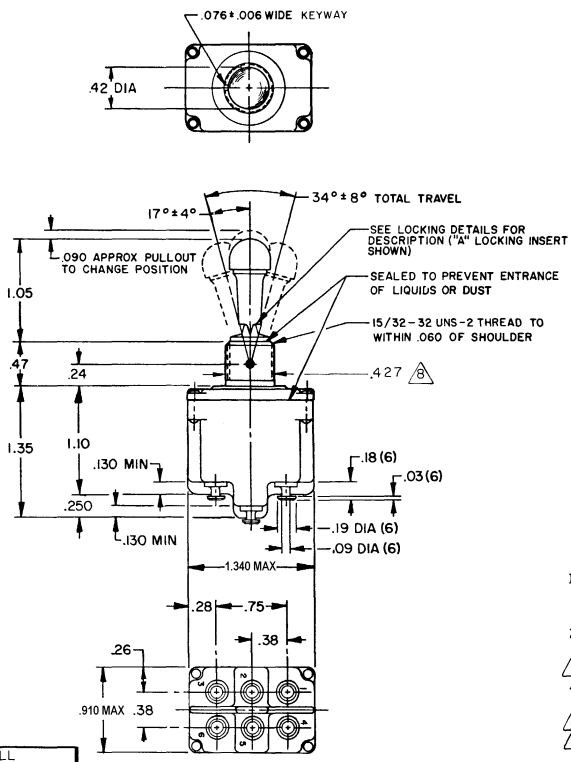
REVISIONS
A 00 38332
B 28 MAR 78 10000
C 16 MAY 81 49070
D 00 49070
E 16 JUL 81 53791
F 00 53791
G 00 53791
H 00 53791
I 00 53791
J 00 53791
K 00 53791
L 00 53791
M 00 53791
N 00 53791
O 00 53791
P 00 53791
Q 00 53791
R 00 53791
S 00 53791
T 00 53791
U 00 53791
V 00 53791
W 00 53791
X 00 53791
Y 00 53791
Z 00 53791

FORMTEK
DRAWN
T M M 28 MAR 78
CHECK C E B 2 APR 78
CHECK 05 FEB 04

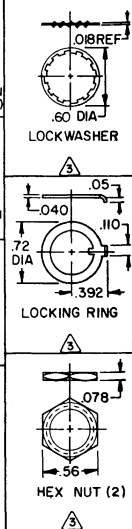
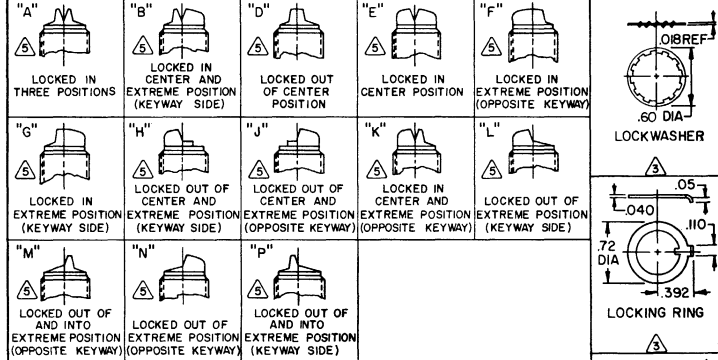
MICRO SWITCH
FREEPORT, ILLINOIS, U.S.A.
A DIVISION OF HONEYWELL
FED. MFG. CODE 91929

CATALOG LISTING
12TL1 SERIES
SWITCH-TOGGLE
CHART 2

THIS DRAWING COVERS A PROPRIETARY ITEM AND IS THE PROPERTY OF MICRO SWITCH, A DIVISION OF HONEYWELL. THIS DRAWING IS NOT TO BE COPIED OR USED WITHOUT THE APPROVAL OF MICRO SWITCH.



MILITARY STANDARD NUMBER	CATALOG LISTING	AVAILABLE LOCKING COMBINATIONS FOR CONFIGURATION SEE LETTERED DETAILS	CIRCUIT MADE WITH TOGGLE LEVER IN			MILITARY RATING (AMPS)								
			KEYWAY SIDE (1-2, 4-5)	CENTER (1-2, 4-5)	OPPOSITE KEYWAY (2-3, 5-6)	RESISTIVE LOAD DC VOLTS	IAC VOLTS	LAMP LOAD 28 125 VDC VAC	INDUCTIVE LOAD 38 125 VDC VAC					
MS 27738-21	I2TL1-1	A,B,D,E,F,G,H,K,L,M,N,P	ON	OFF	ON	20	75	5	15	6	7	4	15	15
MS 27738-22	I2TL1-2	D, F, G	OFF	NONE	ON	(REFER TO L191 FOR UL RATING)								
MS 27738-23	I2TL1-3	D, F, G	ON	NONE	ON	(REFER TO L191 FOR UL RATING)								
MS 27738-24	I2TL1-21	E, F, K, M	NONE	OFF	ON	(REFER TO L191 FOR UL RATING)								
MS 27738-33	I2TL1-31	E, F, K, M	NONE	ON	ON	(REFER TO L191 FOR UL RATING)								
MS 27738-29	I2TL1-4	F	MOM OFF	NONE	ON	(REFER TO L192 FOR UL RATING)								
MS 27738-31	I2TL1-5	E, F, K, L, M, N	MOM ON	OFF	ON	(REFER TO L192 FOR UL RATING)								
MS 27738-30	I2TL1-6	F	MOM ON	NONE	OFF	(REFER TO L192 FOR UL RATING)								
MS 27738-27	I2TL1-7	E, L, N	MOM ON	OFF	MOM ON	(REFER TO L192 FOR UL RATING)								
MS 27738-26	I2TL1-8	F	MOM ON	NONE	ON	(REFER TO L192 FOR UL RATING)								
MS 27738-32	I2TL1-51	E	NONE	ON	MOM ON	(REFER TO L192 FOR UL RATING)								
MS 27738-28	I2TL1-61	E	MOM ON	OFF	NONE	(REFER TO L192 FOR UL RATING)								



- NOTES
- 1 - SWITCHES ARE CAPABLE OF WITHSTANDING A TEMPERATURE OF 160°F CONTINUOUSLY AT FULL RATED LOAD
 - 2 - CIRCUIT DESIGNATION, MICRO SWITCH CATALOG LISTING, DATE CODE, UL RATING AND MS NUMBER IDENTIFIED ON SIDE OF SWITCH FURNISHED UNASSEMBLED
 - 3 - FOR TERMINAL COVER SEE MICRO SWITCH CATALOG LISTING 5PA8
 - 4 - KEYWAY SHOWN ON LEFT SIDE
 - 5 - SUFFIX LETTER MUST BE ADDED FOR DESIRED TYPE OF TOGGLE LOCKING. SEE CHART FOR AVAILABLE LOCKING COMBINATIONS
 - 6 - APPLIES ONLY TO "ON" AND "MOMENTARY ON" POSITIONS
 - 7 - FROM BOTTOM OF KEYWAY TO MAJOR DIA OF 15/32 THREAD

SCALE FULL
DO NOT SCALE PRINT
UNLESS OTHERWISE NOTED
DIMENSIONS ARE IN INCHES

TOLERANCES ARE:

ONE PLACE (.01)	±.030	15A-125, 250 OR 277 VAC	10A-125, 250, 277 VAC
TWO PLACE (.001)	±.008	1/2HP-125VAC; 1HP-250, 277 VAC	1/4HP-125VAC; 1/2HP-250, 277 VAC
THREE PLACE (.0001)	±.005	5A-125VAC "L" CODE L191	3A-125VAC "L" CODE 192

WEIGHT .17 LBS MAX