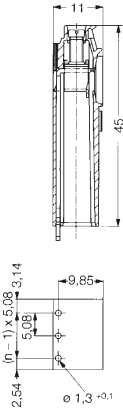


Rated cross-section ≤ 2.5 mm²



LP1H 5.08/90



Technical Data	VDE	UL	CSA
Rated voltage	V	250*	300 300
Rated current	A	24	15 15
Clamping range max.	mm ² /AWG	4.0	12 12

*Overvoltage category III / Pollution severity 3
Additional technical data see page 58

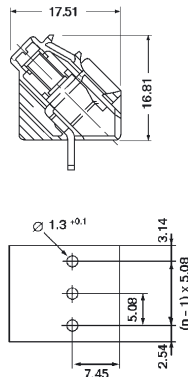
Solder pin length **3.2 mm** **4.5 mm**

Colour				
Poles	Type	Cat. No.	Cat. No.	Qty.
2	LP1H 5.08/2	1640910000	1698070000	100
3	LP1H 5.08/3	1640920000	1698080000	50

LP 5.08/135



with test point



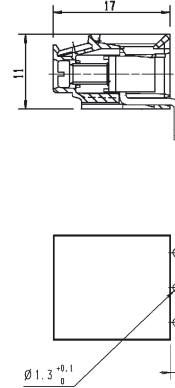
Technical Data	VDE	UL	CSA
Rated voltage	V	250*	300 300
Rated current	A	25	15 15
Clamping range max.	mm ² /AWG	4.0	12 12

*Overvoltage category III / Pollution severity 3
Additional technical data see page 58

Solder pin length **3.2 mm** **4.5 mm**

Colour				
Poles	Type	Cat. No.	Cat. No.	Qty.
2	LP 5.08/2/135	1595730000	1676740000	100
3	LP 5.08/3/135	1595690000	1676750000	100

LP 5.08/180



Technical Data	VDE	UL	CSA
Rated voltage	V	250*	300 300
Rated current	A	25	15 15
Clamping range max.	mm ² /AWG	4.0	12 12

*Overvoltage category III / Pollution severity 3
Additional technical data see page 58

Solder pin length **3.2 mm** **4.5 mm**

Colour				
Poles	Type	Cat. No.	Cat. No.	Qty.
2	LP 5.08/2/180	1753810000	1753830000	100
3	LP 5.08/3/180	1753820000	1753840000	100

Attention: Customers are advised to ensure support for LP1H on the printed circuit board.

Accessories	Page
Marking	40
Fixing	-
Miscellaneous	43, 45

Accessories	Page
Marking	40
Fixing	-
Miscellaneous	45-46

Accessories	Page
Marking	40
Fixing	46
Miscellaneous	45-46