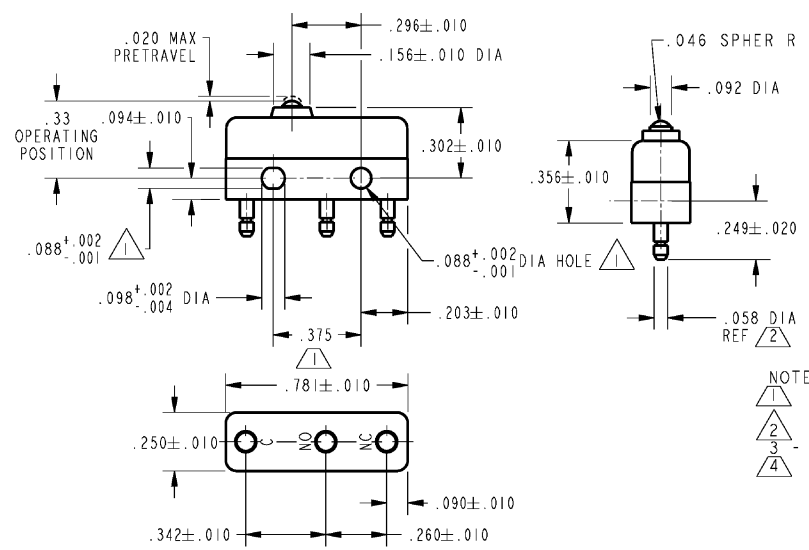
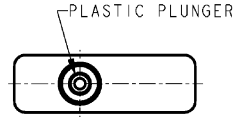


FO-55111-A

HONEYWELL
PART NUMBER
11SM8849-H58
PRODUCT CODE
TWZ5250

REV	DOCUMENT	CHANGED BY	CHECK
4	0038224	KVS 22APR08	ASD



- NOTES
- 1 MOUNTING HOLES WILL ACCEPT PINS OR SCREWS OF .087 MAX DIA ON .375±.002 CENTERS
 - 2 PLATED TERMINALS WILL ACCEPT "AMP INC" .058 DIA PIN RECEPTACLES
 - 3 SWITCH WILL WITHSTAND TEMPERATURE OF 250°F
 - 4 DIFFERENTIAL FORCE TO DIFFERENTIAL TRAVEL RATIO RANGE (27.35 LB/IN - 54.65 LB/IN)

RELEASE NO. PR - 16976
REPLACES -

CHARACTERISTICS	4
OPERATING FORCE	3 - 5 OZ
RELEASE FORCE	1 OZ MIN
DIFFERENTIAL TRAVEL	.004 MAX
OVERTRAVEL	.005 MIN

ELECTRICAL DATA	
CONTACT ARRANGEMENT S P D T	
30 VOLTS DC RATING	
SEA LEVEL	50,000 FT
INDUCTIVE	3 AMP 2.5 AMP
RESISTIVE	5 AMP 5 AMP
MAXIMUM INRUSH 24 AMP	
KEMA CE	5A, 250V ~ T85 1E4
UL CSA	5A, 250 VAC

DESIGN UNITS: INCH
TOLERANCES UNLESS NOTED:
NO PLACE .X ±
ONE PLACE .XX ±
TWO PLACE .XXX ±
THREE PLACE .XXXX ±
ANGLES ±
THIRD ANGLE PROJECTION

DRAWN	VK	27 NOV 07
CHECK	RJ	27 NOV 07
THIS DRAWING COVERS A PROPRIETARY ITEM AND IS THE PROPERTY OF HONEYWELL. THIS DRAWING IS NOT TO BE COPIED OR USED WITHOUT THE PERMISSION OF HONEYWELL.		
INTERPRET PER ANSI Y14.5M-1982 OTHER HONEYWELL ENGINEERING STANDARDS MAY APPLY		
RASTER		

Honeywell			
TITLE SWITCH - BASIC			
SIZE	TYPE	DRAWING NAME	REV
B	I	11SM8849-H58	4
SCALE	-	WEIGHT .006 LB MAX	SHEET 1 OF 1

4

3

2

1