

SPECIFICATIONS
 MAKE-BEFORE-BREAK

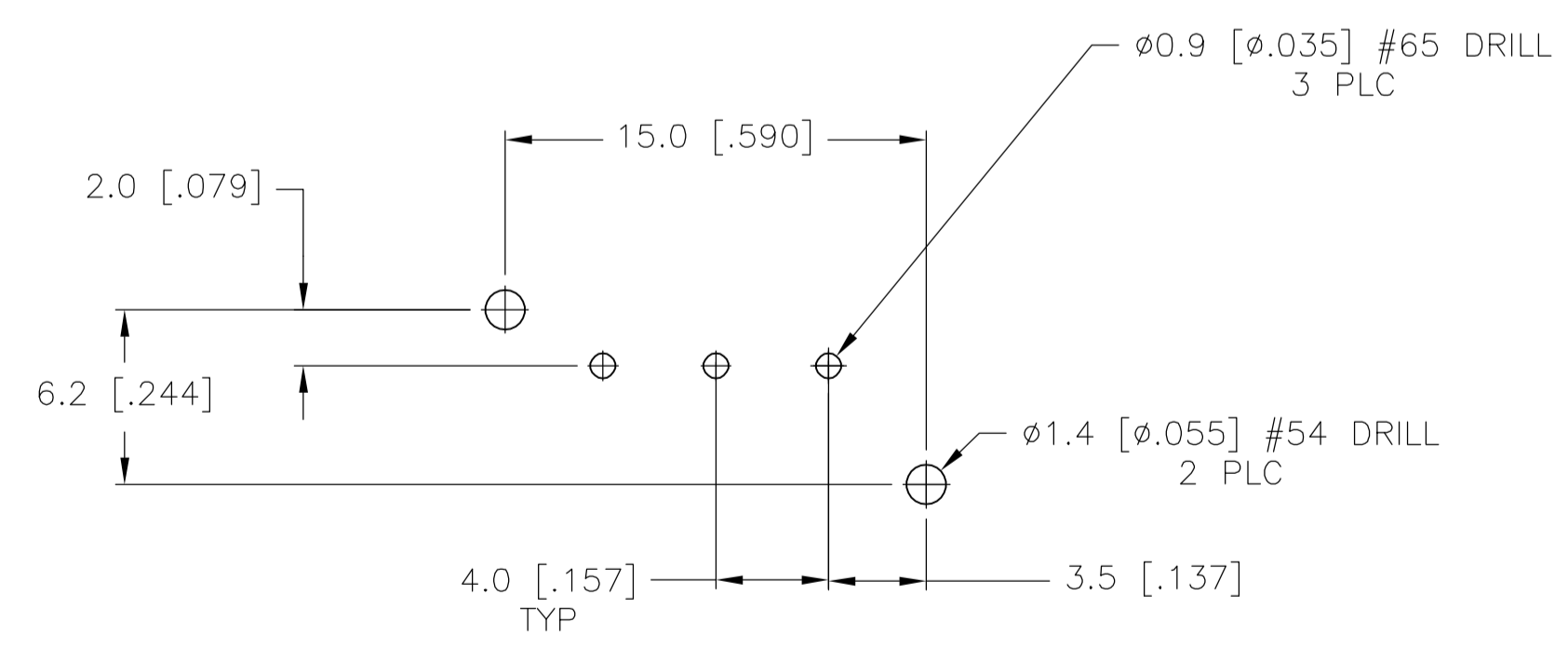
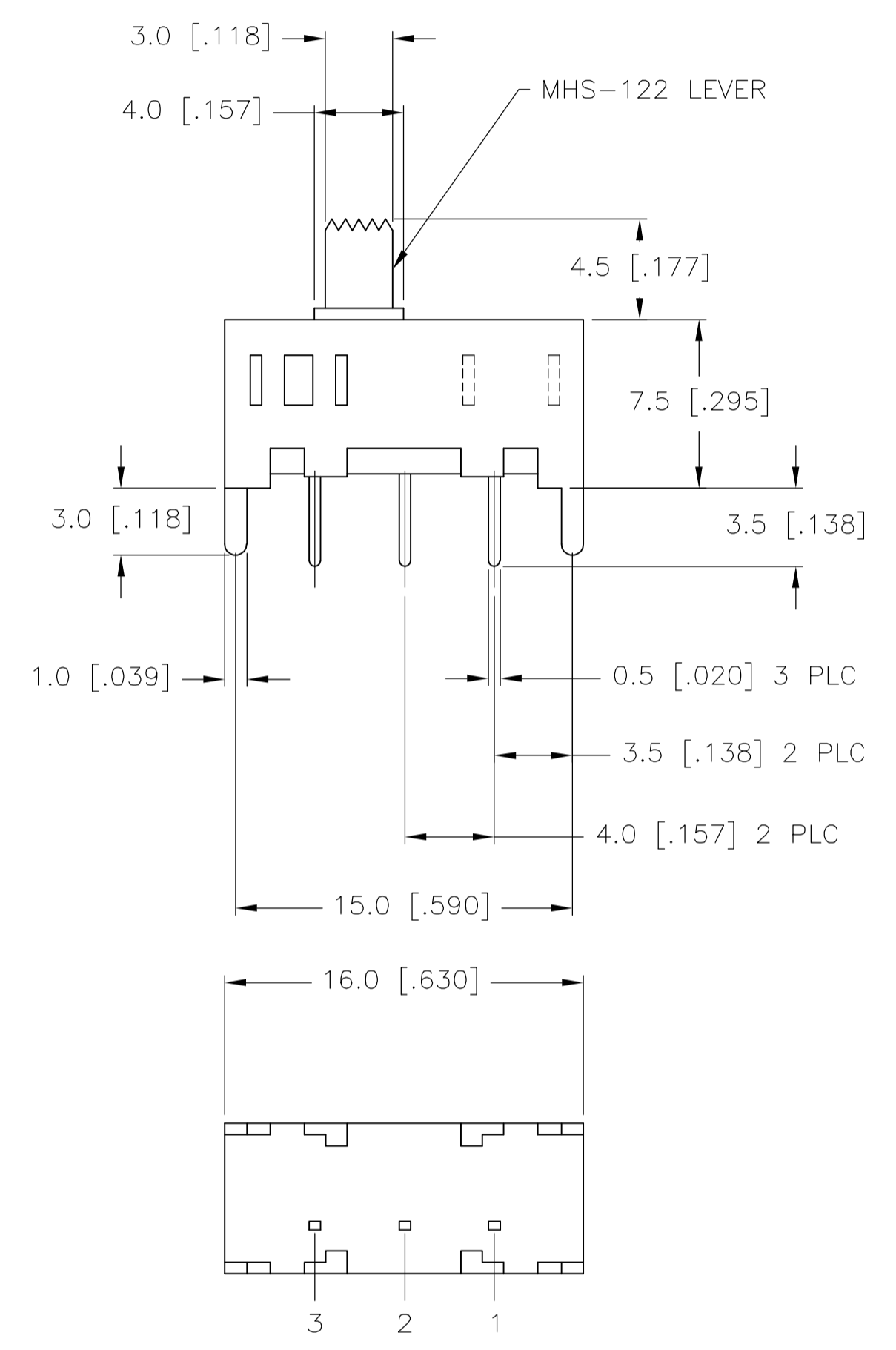
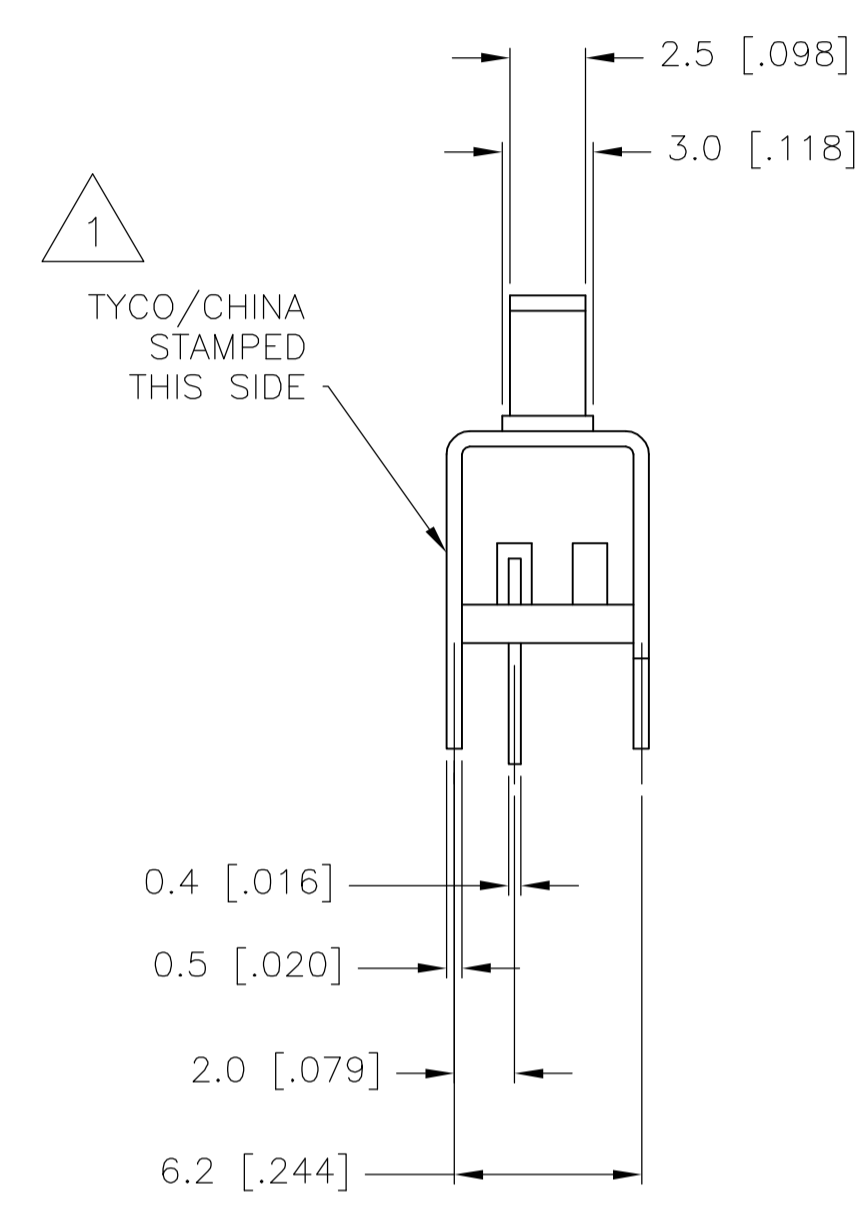
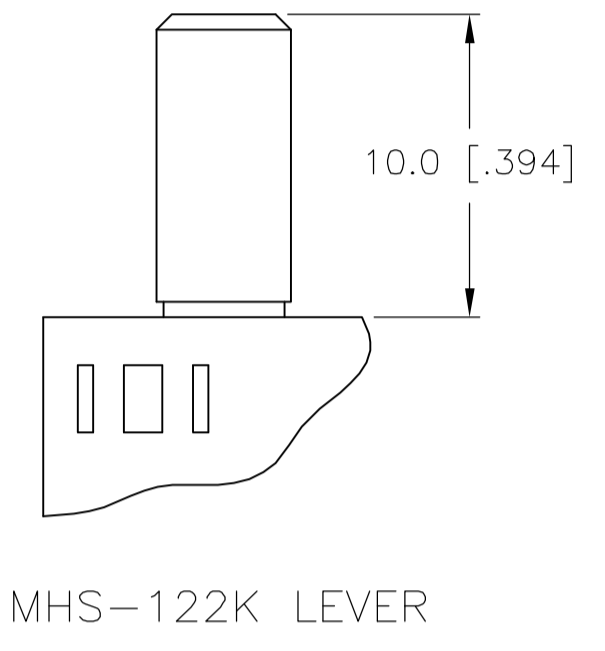
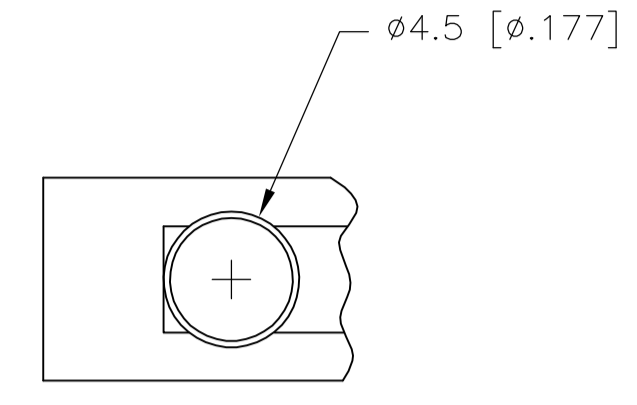
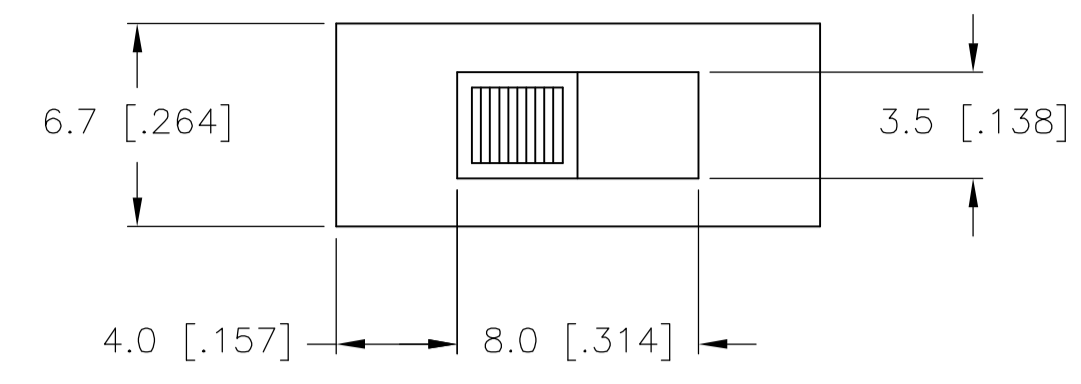
MATERIALS:
 ACTUATOR- POM, UL94HB BLACK
 TERMINAL BOARD- PHENOLIC LAMINATED SHEET, UL94HB, NATURAL
 FRAME- STEEL, NICKEL PLATE
 TERMINAL/FIXED CONTACT- COPPER ALLOY, GOLD OR SILVER OVER NICKEL PLATE
 MOVING CONTACT- COPPER ALLOY, GOLD OR SILVER OVER NICKLE PLATE
 DETENT BALL- STEEL
 COIL SPRING- GALVANIZED SPRING WIRE
 LEVER,(K SERIES ONLY)- ALUMINUM
 SEAL- EPOXY

ELECTRICAL:
 CONTACT RATING- .4VA@20VDC OR PEAK AC (GOLD); 300mA@125V AC (SILVER)
 INITIAL CONTACT RESISTANCE- 30 milliohm max.
 FINAL CONTACT RESISTANCE- 100 milliohm max. (AFTER TEST)
 INSULTAION RESISTANCE- 1,000 Megohms min.
 DIELECTRIC STRENGTH- 500V RMS@SEA LEVEL
 LIFE EXPECTANCY- 15,000 CYCLES MIN.

MECHANICAL:
 ACTUATION FORCE- 600+/-300 GRAMS
 TRAVEL- SEE P/N TABLE

ENVIRONMENTAL:
 OPERATING TEMPERATURE- -20 TO +85 DEGREES C
 STORAGE TEMPERATURE- -40 TO +100 DEGREES C
 RESISTANCE TO SOLDER HEAT PER 109-202, CONDITION B
 SOLDERABILITY PER EIA-364-52, CLASS 2, CATEGORY 1, 95% MIN COVERAGE

- NOTES:
- MARK PER 202-37 SPECIFICATION, *tyco*/CHINA MINIMUM REQUIREMENT
 - ALL MATERIALS AND FINISHES SHALL COMPLY WITH EU DIRECTIVE 2002/95/EC OF 27JAN2003 (ROHS)
 - ANTI SOLDER WICK SEAL AT TERMINAL TO BOARD INTERFACE
 - ALL PERFORMANCE TESTING WAS DONE IN ACCORDANCE TO TYCO SPECIFICATION 102-2469



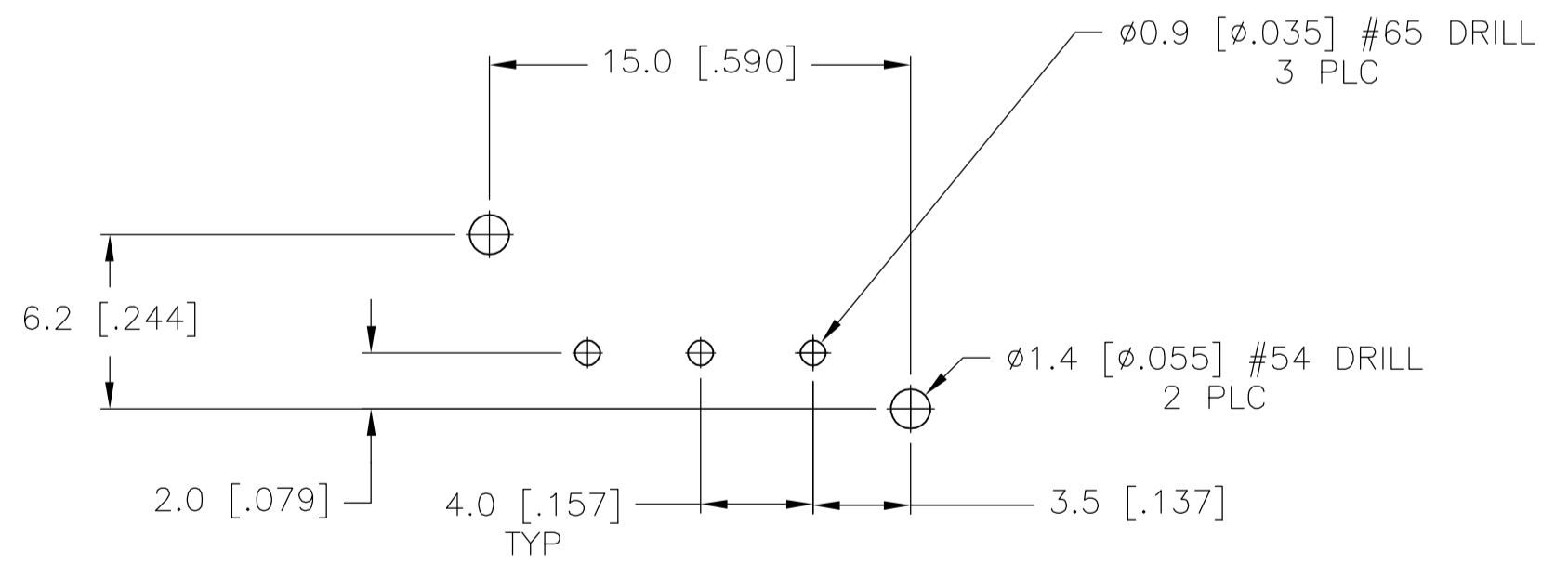
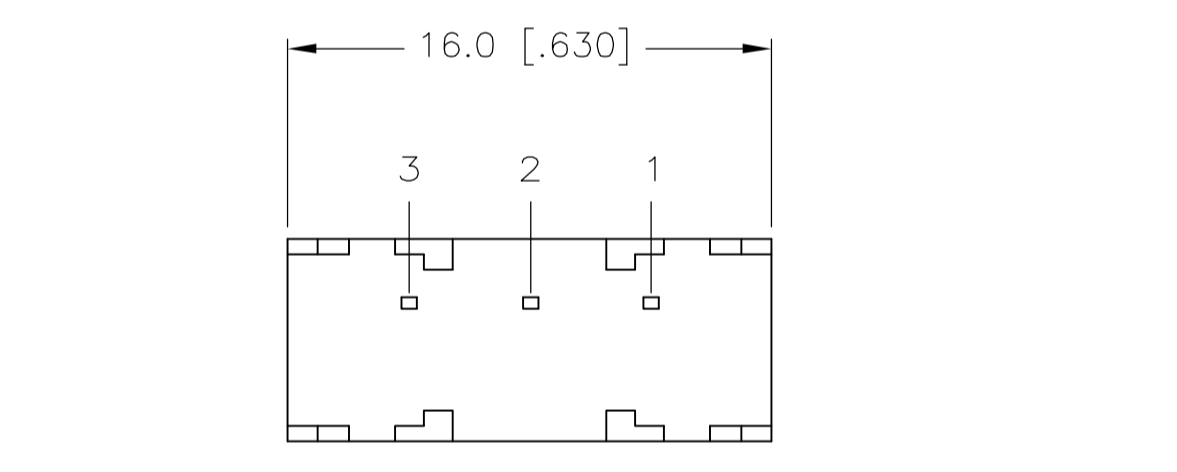
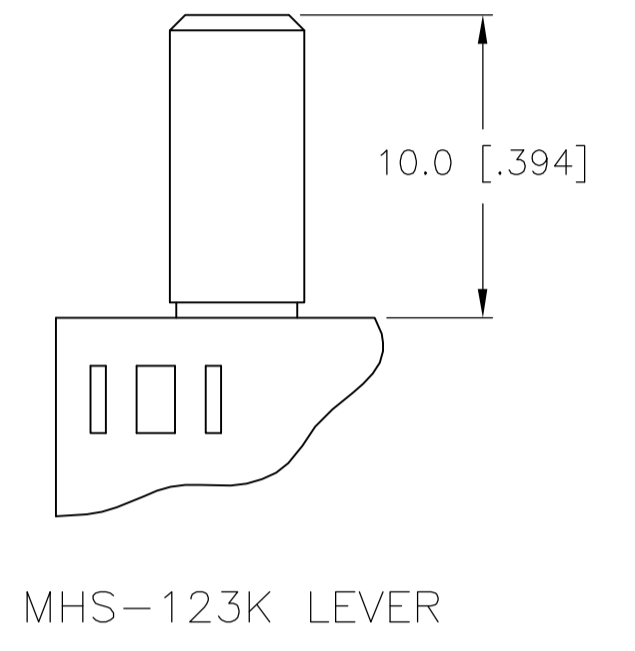
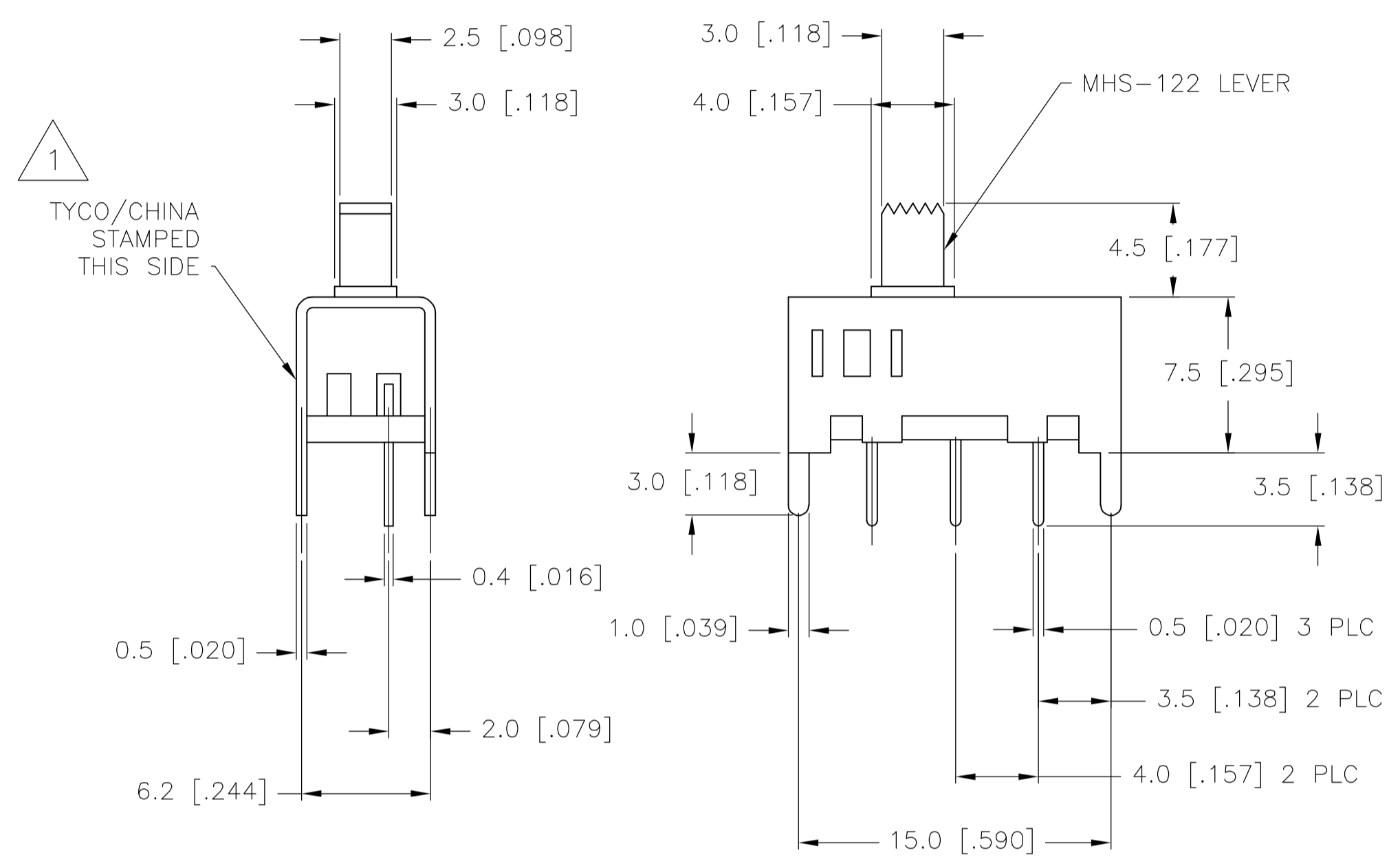
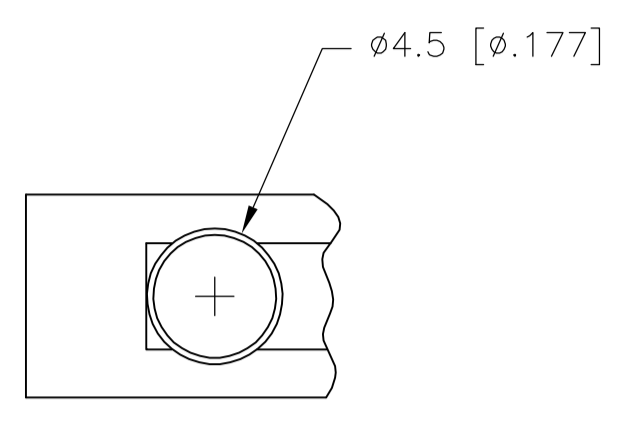
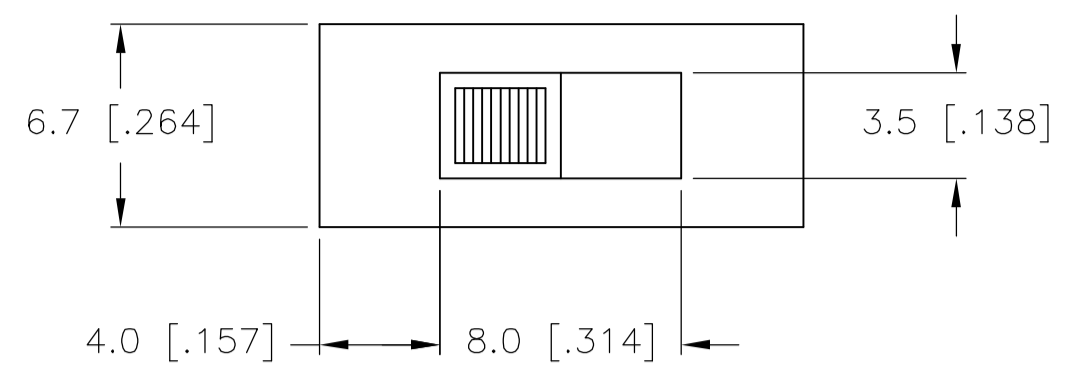
RECOMMENDED BOARD LAYOUT
 PC LAYOUT TOLERANCE: ±.002

MHS-122 SERIES SWITCH

1-1825255-0	MHS133KG04	SP3T	2.00	GOLD	-	2-1	-	2-3	-	2-4
1825255-9	MHS133K04	SP3T	2.00	SILVER	-	2-1	-	2-3	-	2-4
1825255-8	MHS133G04	SP3T	2.00	GOLD	-	2-1	-	2-3	-	2-4
1825255-7	MHS13304	SP3T	2.00	SILVER	-	2-1	-	2-3	-	2-4
-	MHS123KG04	SPDT	2.00	GOLD	2-1	-	OFF	-	2-3	-
1825255-6	MHS123K04	SPDT	2.00	SILVER	2-1	-	OFF	-	2-3	-
-	MHS123G04	SPDT	2.00	GOLD	2-1	-	OFF	-	2-3	-
1825255-5	MHS12304	SPDT	2.00	SILVER	2-1	-	OFF	-	2-3	-
1825255-4	MHS122KG04	SPDT	4.00	GOLD	2-1	-	NONE	-	2-3	-
1825255-3	MHS122K04	SPDT	4.00	SILVER	2-1	-	NONE	-	2-3	-
1825255-2	MHS122G04	SPDT	4.00	GOLD	2-1	-	NONE	-	2-3	-
1825255-1	MHS12204	SPDT	4.00	SILVER	2-1	-	NONE	-	2-3	-
TYCO PART NO.	T&B PART NO.	TYPE	TRAVEL	PLATING						

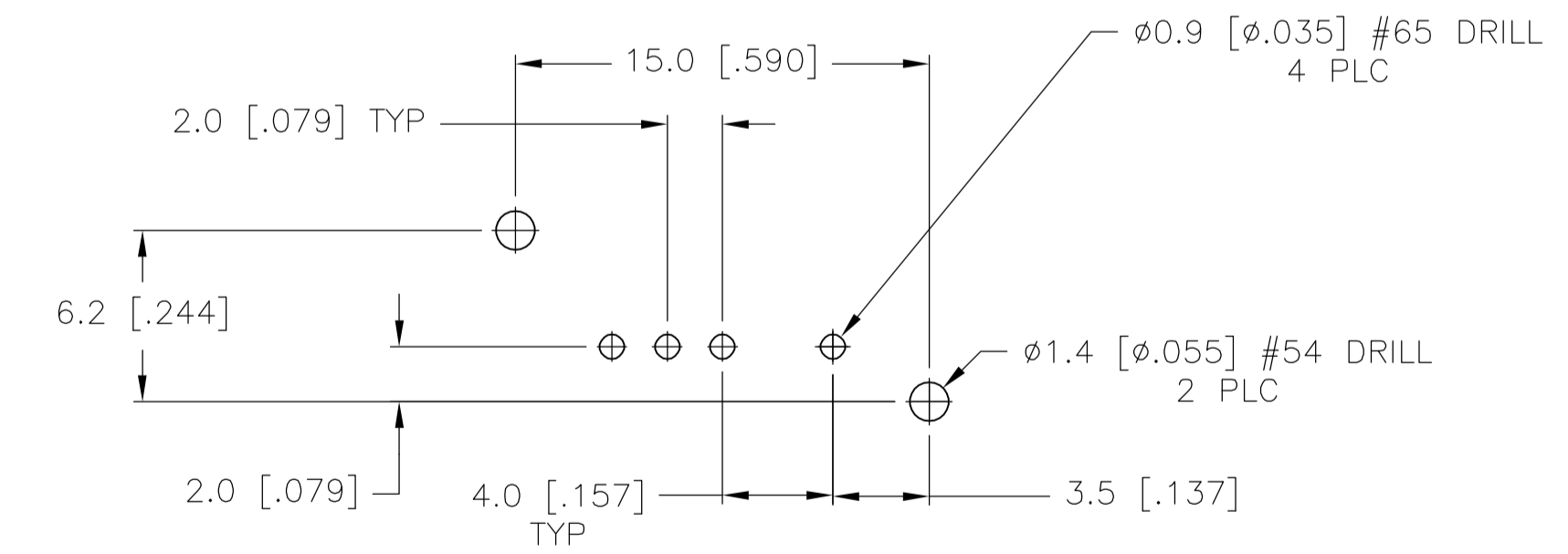
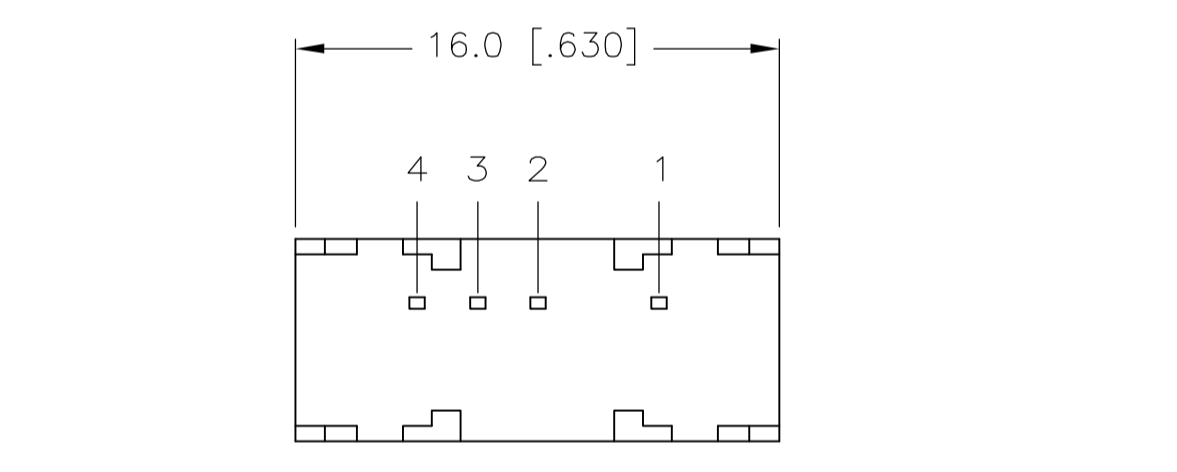
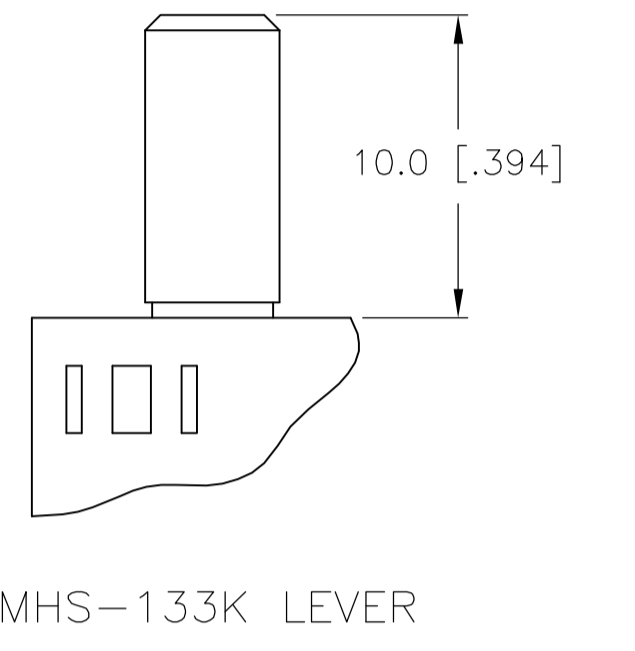
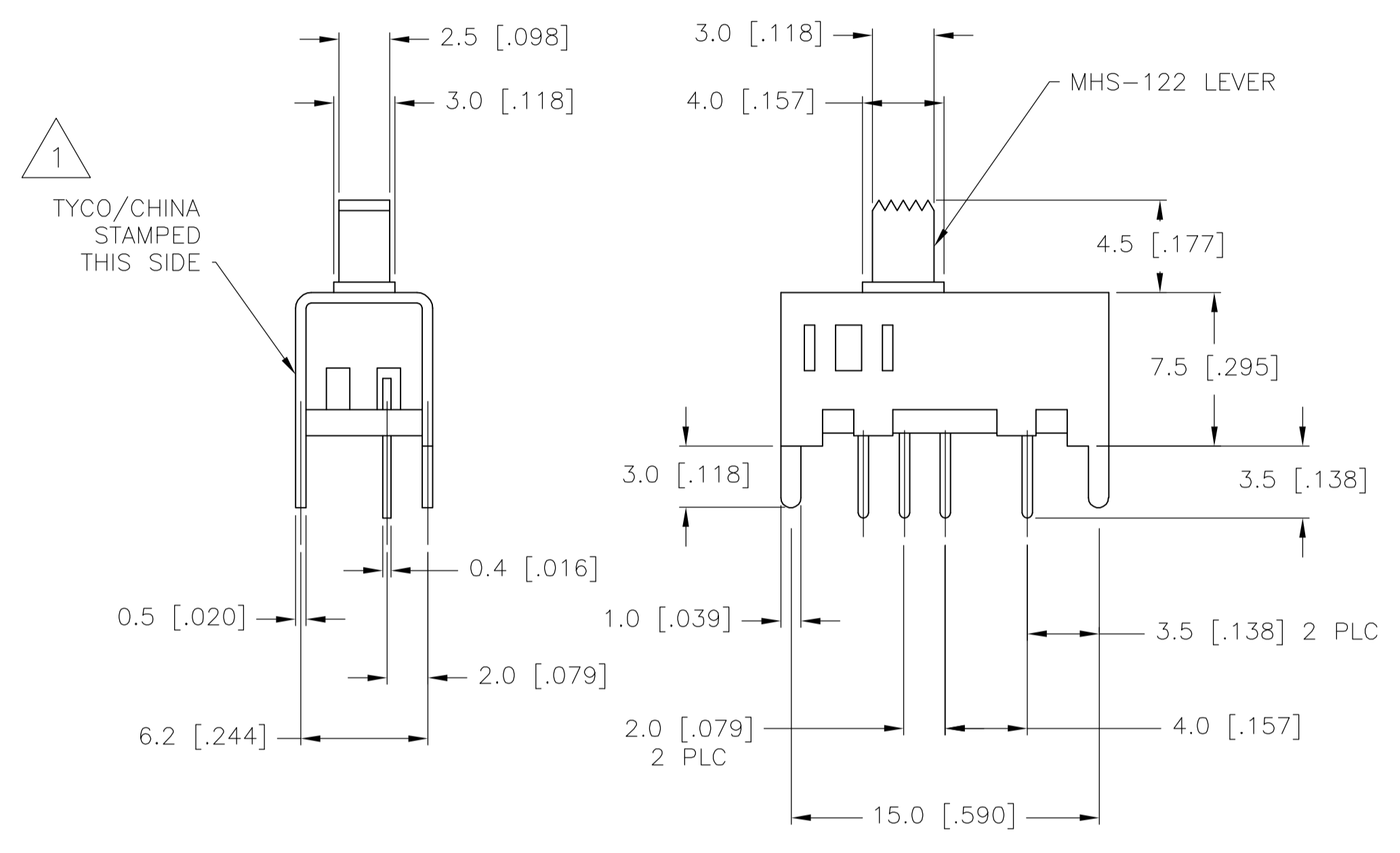
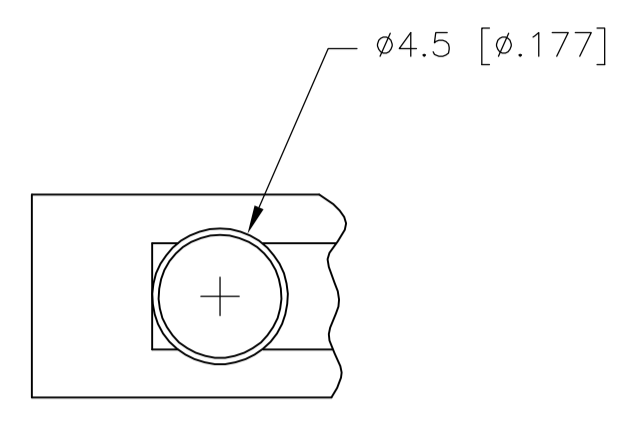
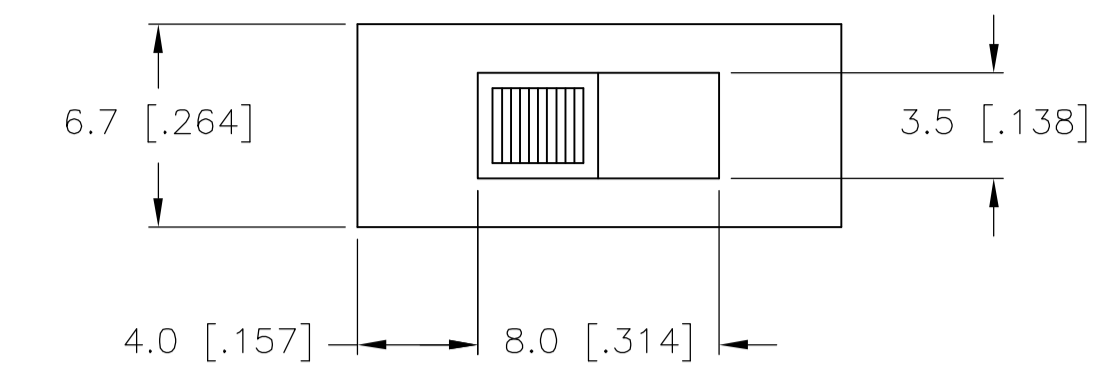
TERMINALS CONNECTED WHEN SLIDE IS IN POSITION SHOWN.

THIS DRAWING IS A CONTROLLED DOCUMENT.		DIN R BROWN 21DEC05	tyco Tyco Electronics Corporation	
DIMENSIONS: mm		CHK M SARVER 21DEC05	Harrisburg, Pa 17105-3608	
TOLERANCES UNLESS OTHERWISE SPECIFIED:		APVD M SARVER 21DEC05	NAME	
0 PLC ± -	1 PLC ± 0.3 [.012]	PRODUCT SPEC		
2 PLC ± -	3 PLC ± -	APPLICATION SPEC		
4 PLC ± -	ANGLES ± 1'	SIZE CASE CODE DRAWING NO		
MATERIAL -	FINISH -	WEIGHT -		RESTRICTED TO
CUSTOMER DRAWING		A1 00779 ©=1825255		SCALE 4:1 SHEET 1 OF 2 REV A



RECOMMENDED BOARD LAYOUT
 PC LAYOUT TOLERANCE: ±.002

MHS-123 SERIES SWITCH



RECOMMENDED BOARD LAYOUT
 PC LAYOUT TOLERANCE: ±.002

MHS-133 SERIES SWITCH

THIS DRAWING IS A CONTROLLED DOCUMENT.		DWN R BROWN	21DEC05	tyco Electronics	Tyco Electronics Corporation Harrisburg, Pa 17105-3608	
DIMENSIONS: mm		CHK M SARVER	21DEC05		NAME SLIDE SWITCH, MHS SERIES, SINGLE POLE, VERTICAL	
TOLERANCES UNLESS OTHERWISE SPECIFIED:		APVD M SARVER	21DEC05	PRODUCT SPEC		
0 PLC ± -		APPLICATION SPEC		SIZE CASE CODE DRAWING NO		
1 PLC ± 0.3 [.012]		WEIGHT		A1 00779 C=1825255		
2 PLC ± -		CUSTOMER DRAWING		SCALE 4:1 SHEET 2 OF 2 REV A		
3 PLC ± -						
4 PLC ± -						
ANGLES ± 1°						
MATERIAL						
FINISH						