

4

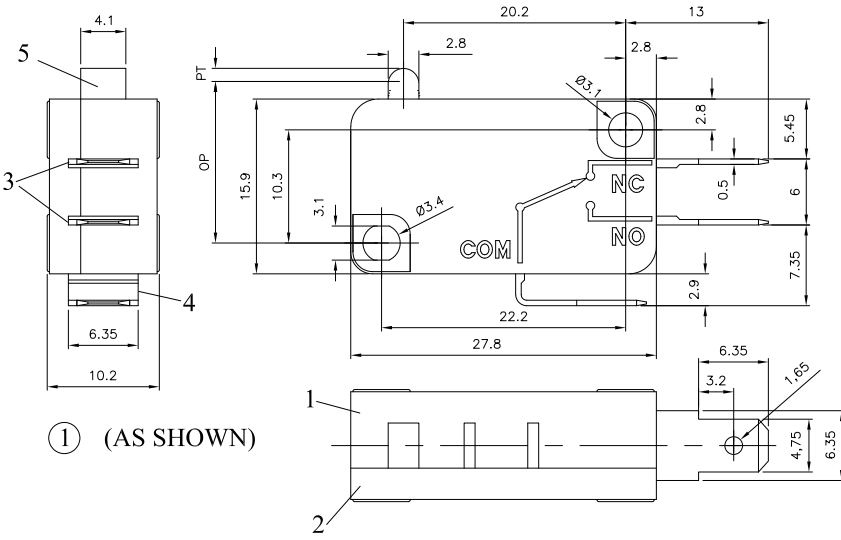
3

2

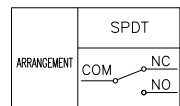
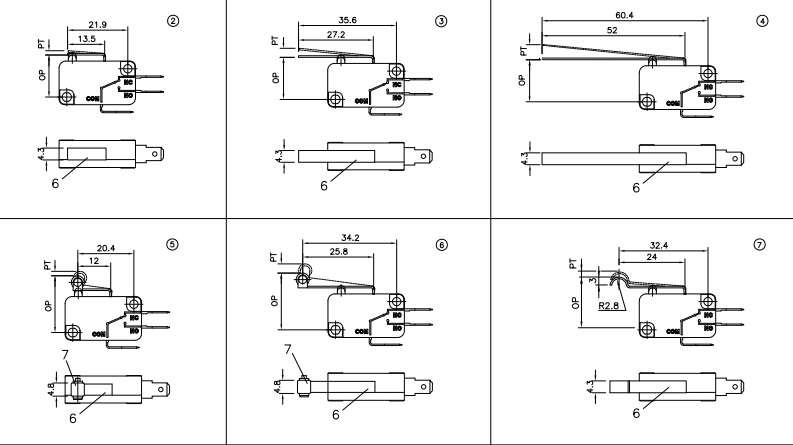
1

THIS DRAWING IS UNPUBLISHED. RELEASED FOR PUBLICATION.  
 © copyright - By - ALL RIGHTS RESERVED.

LOC	DIST	REVISIONS					
IF		F	LR	DESCRIPTION	DATE	OWN	APPD
		J1		REVISED PER ECO-11-005027	11MAR11	RK	HMR



Base Actuation Force	TE CONNECTIVITY SALES PN	TE CONNECTIVITY PN	DESCRIPTION	
0,1A 100g	MP01DTASMD	1-1478670-7	Simu Roller	⑦
	MP01DTANRD	1-1478670-6	Norm Roller	⑥
	MP01DTASRD	1-1478670-5	Short Roller	⑤
	MP01DTALLD	1-1478670-4	Long Lever	④
	MP01DTANLD	1-1478670-3	Norm Lever	③
	MP01DTASLD	1-1478670-2	Short Lever	②
16A 350g	MP16DTAOLD	1-1478670-1	Pin Plunger	①
	MP16DTASMK	1-1478605-7	Simu Roller	⑦
	MP16DTANRK	1-1478605-6	Norm Roller	⑥
	MP16DTASRK	1-1478605-5	Short Roller	⑤
	MP16DTALLK	1-1478605-4	Long Lever	④
	MP16DTANLK	1-1478605-3	Norm Lever	③
16A 200g	MP16DTASLK	1-1478605-2	Short Lever	②
	MP16DTAOLK	1-1478605-1	Pin Plunger	①
	MP16DTASMG	1-1478604-7	Simu Roller	⑦
	MP16DTANRG	1-1478604-6	Norm Roller	⑥
	MP16DTASRG	1-1478604-5	Short Roller	⑤
	MP16DTALLG	1-1478604-4	Long Lever	④
16A 160g	MP16DTANLG	1-1478604-3	Norm Lever	③
	MP16DTASLG	1-1478604-2	Short Lever	②
	MP16DTAOLG	1-1478604-1	Pin Plunger	①
	MP16DTASME	1-1478603-7	Simu Roller	⑦
	MP16DTANRE	1-1478603-6	Norm Roller	⑥
	MP16DTASRE	1-1478603-5	Short Roller	⑤
	MP16DTALLE	1-1478603-4	Long Lever	④
	MP16DTANLE	1-1478603-3	Norm Lever	③
	MP16DTASLE	1-1478603-2	Short Lever	②
	MP16DTAOLE	1-1478603-1	Pin Plunger	①



- NOTES:
- FOR TECHNICAL DATA REFER TO YOUR LOCAL TE CONNECTIVITY SALES OFFICE.
  - ALL DIMENSIONS ARE NOMINAL FOR REFERENCE ONLY UNLESS OTHERWISE STATED.
  - ALL DIMENSIONS ARE COMMON TO THE MAIN BODY. VARIATIONS ARE IN THE OPERATING LEVERS.
  - OP: OPERATING POSITION  
FP: FREE POSITION
  - REFER PAGE 2 FOR MATERIAL INFORMATION AND SPECIFICATION DATA.
  - REFER DRAWING 196618 AND 196619 FOR MARKING INFORMATION.

THIS DRAWING IS A CONTROLLED DOCUMENT.		DRW: SA008712	10-01-08	TE Connectivity	
DIMENSIONS: mm		CHK: -	APP: -	MICRO SWITCH DT SOLDER TERMINAL	
TOLERANCES UNLESS OTHERWISE SPECIFIED:		PRODUCT SPEC: -	APPLIC: -	SIZE: A2	CASE CODE: 00779
0 PLG	± 0.1mm	WEIGHT: -	FINISH: -	DRAWING NO: C=1968580	RESTRICTED TO: -
1 PLG	± 0.5mm	CUSTOMER DRAWING			
2 PLG	± 0.2mm	SCALE: 1:1			
3 PLG	± 0.1mm	SHEET: 1 of 2			
4 PLG	± 0.1mm	REV: J1			
ANGLES	± 0.5°				

1471-9 (3/11)

1968580

A

4

3

2

1

THIS DRAWING IS UNPUBLISHED. RELEASED FOR PUBLICATION. ALL RIGHTS RESERVED.

LOC	DIST	REVISIONS					
IF	---	F	LR	DESCRIPTION	DATE	BY	APPD
				SEE SHEET 1			

SPECIFICATION DATA		
<b>Amp Rating</b>	<b>16</b>	<b>0,1</b>
Insulation Resistance	min. 100 Mohm	
Contact Resistance	max 50 m ohm	
Dielectric Strength	AC 1.000V 60sec	
Operating Speed	0,2mm/sec - 1,000mm/sec	1mm/sec - 500mm/sec
Max allowed Mechanical Open/Close Frequencies	300 Cycles/min	
Shock Resistance (Without Lever)	300mm/sec <sup>2</sup>	
Vibration Resistance (Without Lever)	1,5mm 10-55 Hz(2Hr)	
Electrical Life	50.000 cycles @16A250VAC resistive load	10.000 cycles @0,1A250VAC resistive load
Mechanical Life	1.000.000 cycles	
Safety Approval	UL / CUL / ENEC	UL / CUL
Operating Temperature Range	-25°C to +130°C RH85% Max	

MAJOR COMPONENT & MATERIAL LIST 16A Type				
NO	PART NAME	MATERIAL	UL FRAME	FINISH (COLOR)
1	Box	P. B. T. Resin	94 V-0	
2	Cover			grey
3	Contact	Ag alloy / Cu		
	Terminal	Brass Sheet (t=0,8)		Silver Plating
4	Contact	Ag alloy		
	Spring Plate	Beryllium Copper		
	Terminal	Brass Sheet (t=0,8)		Silver Plating
5	Button	P. B. T. Resin	94 V-0	black
6	Lever	Stainless Steel		
7	Roller	Stainless Steel		

TE CONNECTIVITY P/N	CHARACTERISTICS					
	Operating Force	Releasing Force	Pre Travel	Operating Position	Over Travel	Movement Differential
	max	min	max		min	max
1-1478603-1	180 ± 30 g	50 g	1,2 mm	14,7 ± 0,5 mm	1,25mm	0,4 mm
1-1478603-2	180 ± 45 g	50 g	1,8 mm	15,3 ± 0,5 mm	1,50 mm	0,5 mm
1-1478603-3	75 ± 20 g	30 g	3,3 mm	15,3 ± 1,5 mm	2,5 mm	1,2 mm
1-1478603-4	40 ± 15 g	15 g	6,2 mm	15,3 ± 2,0 mm	4,4 mm	2,2 mm
1-1478603-5	180 ± 40 g	50 g	1,8 mm	20,7 ± 2,0 mm	1,5 mm	0,5 mm
1-1478603-6	80 ± 15 g	25 g	3,7 mm	20,7 ± 1,5 mm	3,3 mm	1,3 mm
1-1478603-7	85 ± 20 g	30 g	2,8 mm	18,7 ± 1,5 mm	2,4 mm	1,1 mm
1-1478604-1	200 ± 40 g	55 g	1,2 mm	14,7 ± 0,5 mm	1,25mm	0,4 mm
1-1478604-2	200 ± 45 g	55 g	1,8 mm	15,3 ± 0,5 mm	1,50 mm	0,5 mm
1-1478604-3	95 ± 20 g	40 g	3,3 mm	15,3 ± 1,5 mm	2,5 mm	1,2 mm
1-1478604-4	50 ± 15 g	20 g	6,2 mm	15,3 ± 2,0 mm	4,4 mm	2,2 mm
1-1478604-5	200 ± 45 g	55 g	1,8 mm	20,7 ± 2,0 mm	1,5 mm	0,5 mm
1-1478604-6	75 ± 20 g	30 g	3,7 mm	20,7 ± 1,5 mm	3,3 mm	1,3 mm
1-1478604-7	105 ± 20 g	40 g	2,8 mm	18,7 ± 1,5 mm	2,4 mm	1,1 mm
1-1478605-1	350 ± 40 g	80 g	1,2 mm	14,7 ± 0,5 mm	1,25mm	0,4 mm
1-1478605-2	350 ± 50 g	80 g	1,8 mm	15,3 ± 0,5 mm	1,50 mm	0,5 mm
1-1478605-3	170 ± 30 g	50 g	3,3 mm	15,3 ± 1,5 mm	2,5 mm	1,2 mm
1-1478605-4	85 ± 20 g	30 g	6,2 mm	15,3 ± 2,0 mm	4,4 mm	2,2 mm
1-1478605-5	350 ± 50 g	80 g	1,8 mm	20,7 ± 2,0 mm	1,5 mm	0,5 mm
1-1478605-6	140 ± 30 g	45 g	3,7 mm	20,7 ± 1,5 mm	3,3 mm	1,3 mm
1-1478605-7	180 ± 30 g	50 g	2,8 mm	18,7 ± 1,5 mm	2,4 mm	1,1 mm
1-1478670-1	100 ± 25 g	20 g	1,2 mm	14,7 ± 0,5 mm	1,25mm	0,4 mm
1-1478670-2	100 ± 30 g	20 g	1,8 mm	15,3 ± 0,5 mm	1,50 mm	0,5 mm
1-1478670-3	50 ± 15 g	15 g	3,3 mm	15,3 ± 1,5 mm	2,5 mm	1,2 mm
1-1478670-4	25 ± 10 g	8 g	6,2 mm	15,3 ± 2,0 mm	4,4 mm	2,2 mm
1-1478670-5	100 ± 30 g	20 g	1,8 mm	20,7 ± 2,0 mm	1,5 mm	0,5 mm
1-1478670-6	40 ± 15 g	10 g	3,7 mm	20,7 ± 1,5 mm	3,3 mm	1,3 mm
1-1478670-7	55 ± 15 g	15 g	2,8 mm	18,7 ± 1,5 mm	2,4 mm	1,1 mm

MAJOR COMPONENT & MATERIAL LIST 0,1A Type				
NO	PART NAME	MATERIAL	UL FRAME	FINISH (COLOR)
1	Box	PET Resin	94 V-0	grey
2	Cover			
3	Contact	Ag alloy / Cu		
	Terminal	Brass Sheet (t=0,8)		Silver Plating
4	Contact	Ag alloy		
	Spring Plate	Beryllium Copper		
	Terminal	Brass Sheet (t=0,8)		Silver Plating
5	Button	PPS Resin	94 V-0	black
6	Lever	Stainless Steel		
7	Roller	Stainless Steel		

THIS DRAWING IS A CONTROLLED DOCUMENT. DWI: SA008712 10-01-08

OK: \_\_\_\_\_ NAME: \_\_\_\_\_

APPROVED: \_\_\_\_\_

PRODUCT SPEC: \_\_\_\_\_

APPLICATION SPEC: \_\_\_\_\_

WEIGHT: \_\_\_\_\_

CUSTOMER DRAWING

TE Connectivity

MICRO SWITCH DT  
SOLDER TERMINAL

SIZE: A2 CASE CODE: 00779 DRAWING NO: C=1968580 RESTRICTED TO: \_\_\_\_\_

SCALE: 1:1 SHEET: 2 of 2 REV: J1