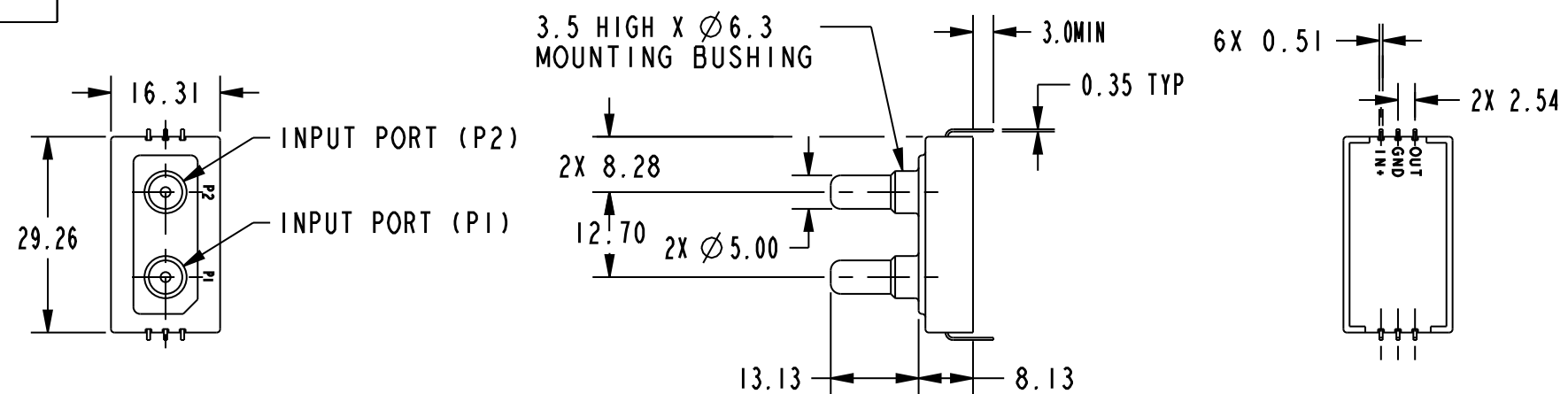
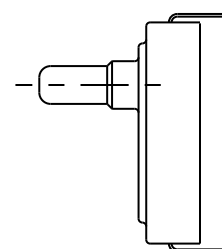
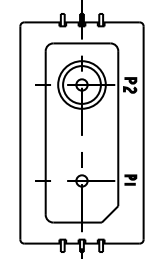


HONEYWELL
PART NUMBER

| REV | DOCUMENT | CHANGED BY | CHECK |
|-----|----------|------------|-------|
| 10 | 0064547 | NR 20MAY10 | RS |



TYPE "A" & "D" (DIFFERENTIAL)
MOUNTING TYPE = "T"



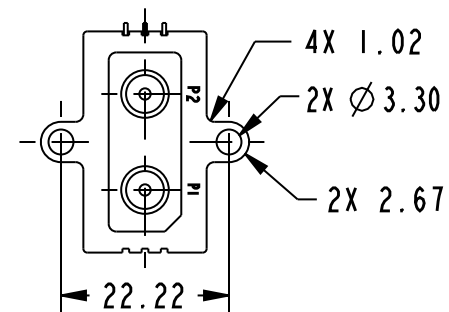
TYPE "G" (GAGE)
MOUNTING TYPE = "T"

| CATALOG LISTING | TYPE | OPERATING PRESSURE RANGE |
|-----------------|------|--------------------------|
| Ⓚ | G | 0 TO 15 PSIG |
| Ⓞ | G | 0 TO 15 PSIG |
| 185PC15AH2 | A | 0 TO 15 PSIA |
| 185PC15DT | D | 0 TO 15 PSID |
| Ⓚ | D | 0 TO 15 PSID |
| 185PC15AH | A | 0 TO 15 PSIA |
| 185PC15AT | A | 0 TO 15 PSIA |
| 186PC15DH | D | 0 TO 15 PSID |
| 186PC15DT | D | 0 TO 15 PSID |

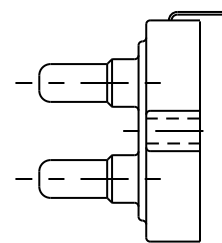
MOUNTING TYPE
H = HOUSING
T = TERMINAL

| GENERAL OPERATING CHARACTERISTICS | |
|-----------------------------------|---|
| PRESSURE RANGE | 0 TO 775mm Hg (0 TO 15 PSI) |
| OVERPRESSURE | 2327mm Hg (45 PSI) |
| TEMPERATURE RANGES | STORAGE -55 TO +125°C OPERATE -40 TO +85°C COMPENSATED 0 TO +50°C |
| SUPPLY VOLTAGE | 7 TO 16 VDC |
| SUPPLY CURRENT | 6mA MAX WITH 10K LOAD |
| OUTPUT VOLTAGE | PROPORTIONAL TO SUPPLY VOLTAGE OVER ABOVE RECOMMENDED RANGE |
| SHORT CIRCUIT LIMIT | MAY BE SHORTED INDEFINITELY |
| OUTPUT RIPPLE | NONE |
| GROUND REFERENCE | SUPPLY AND OUTPUT ARE COMMON |

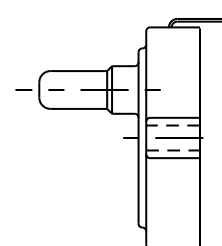
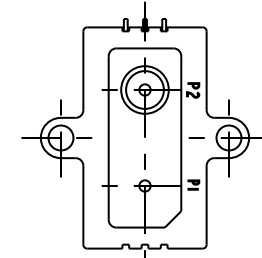
| ELECTRICAL PERFORMANCE AT 25°C AND 8.00 ± .01 VDC SUPPLY | |
|--|--|
| OUTPUT VOLTAGE | |
| 184PC15G NULL (0 PSIG) | 1.000±.050 VDC |
| FULL SCALE (-12.5 PSIG) | 5.900 VDC TYP P1 > P2 |
| SPAN | 4.167±.050 VDC |
| 185PC15D NULL (0 PSIG) | 1.000±.050 VDC |
| FULL SCALE (15 PSIG) | 6.000 VDC TYP P2 > P1 |
| SCAN | 5.000±.050 VDC |
| 186PC15D NULL (0 PSIG) | 3.500±.050 VDC |
| FULL SCALE (15 PSIG) | 6.000 VDC TYP P2 > P1 |
| OUTPUT @ 15 PSIG | 1.000 VDC TYP P1 > P2 |
| SPAN (0 TO 15 PSIG) P2 > P1 | 2.500±.050 VDC |
| SENSITIVITY | 333.3 mV/PSI TYP |
| LINEARITY (B.F.S.L.) | 1.00% SPAN MAX P1 > P2 2.00% SPAN MAX P2 > P1 |
| HYSTERESIS & REPEATABILITY | .15% SPAN TYP |
| TEMPERATURE ERROR | |
| 0°C TO 50°C | 2.00% SPAN MAX |
| 185PC15A NULL (0 PSIA) | 1.000 VDC TYP |
| REFERENCE (2 PSIA) | 1.667±.050 VDC |
| FULL SCALE (15 PSIA) | 6.000 VDC TYP P1 > P2 |
| SPAN (2 TO 15 PSIA) | 4.333±.050 VDC |
| SENSITIVITY | 333.3 mV/PSI TYP |
| LINEARITY (B.F.S.L.) | 1.15% SPAN MAX |
| HYSTERESIS & REPEATABILITY | .17% SPAN TYP |
| TEMPERATURE ERROR | |
| 0°C TO 50°C | 2.31% SPAN MAX |



TYPE "A" & "D" (DIFFERENTIAL)
MOUNTING TYPE = "H"



TYPE "G" (GAGE)
MOUNTING TYPE = "H"



NOTES

- INPUT MEDIA:
P1 - DRY GASES ONLY: CONNECTION SIDE OF SENSOR
P2 - LIMITED ONLY TO THOSE MEDIA THAT WILL NOT ATTACK POLYESTER, SILICON, OR SILICONE BASED ADHESIVE
- TERMINALS ARE PLATED FOR SOLDERING
- LIMIT SOLDERING TO 315°C MAX FOR 10 SECONDS
- UNITS ARE OF PLASTIC CONSTRUCTION
- FOR MOUNTING TYPE "T" DEVICES EXPOSED TO HIGH VIBRATION LEVELS, AS AN ADDED PROTECTION MEASURE, IT IS RECOMMENDED THAT AN ADHESIVE FOAM SECURE THE TRANSDUCER TO THE SUPPORTING STRUCTURE

RELEASE NO:PR-16806

| | | | | | |
|---|--|------------------------|--|---|------------------|
| DESIGN UNITS: INCH TOLERANCES UNLESS NOTED: | NO PLACES .x ± 0.76 ONE PLACE .x ± 0.38 TWO PLACE .xx ± 0.15 THREE PLACE .xxx ± ANGLES x ± | THIRD ANGLE PROJECTION | DRAWN GRT 09NOV00 CHECK SAV 09NOV00 | <p style="text-align: center;">Honeywell</p> <p style="text-align: center;">PRESSURE TRANSDUCER</p> | |
| <p>THIS DRAWING COVERS A PROPRIETARY ITEM AND IS THE PROPERTY OF HONEYWELL. THIS DRAWING IS NOT TO BE COPIED OR USED WITHOUT THE PERMISSION OF HONEYWELL.</p> <p>INTERPRET PER ANSI Y14.5M-1982 OTHER HONEYWELL ENGINEERING STANDARDS MAY APPLY</p> | | | SIZE C TYPE I CAGE CODE - | DRAWING NAME 180PC15 SERIES CHT1 | REV 10 |
| Pro/ENGINEER | | | 2D | SCALE NONE | SHEET 1 OF 1 |

Mouser Electronics

Authorized Distributor

Click to View Pricing, Inventory, Delivery & Lifecycle Information:

[Honeywell:](#)

[186PC15DH](#)