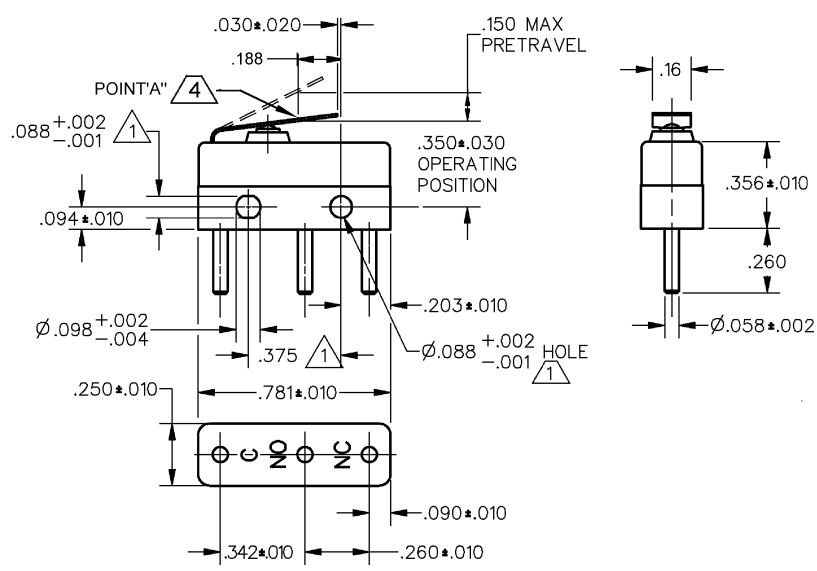
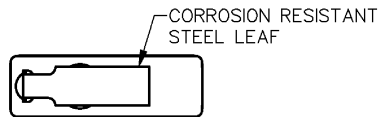


FO-55111-A

HONEYWELL
PART NUMBER
141SM32-H2
PRODUCT CODE
TYS0299

REV	DOCUMENT	CHANGED BY	CHECK
3	0041782	PK 21JUL08	ASD



- NOTES
- 1 MOUNTING HOLES WILL ACCEPT PINS OR SCREWS OF $\varnothing.087$ MAX ON $.375 \pm .002$ CENTERS
 - 2 - TERMINALS ARE PLATED FOR SOLDERING
 - 3 - SWITCH WILL WITHSTAND TEMPERATURE OF 250°F
 - 4 - CHARACTERISTICS TAKEN AT POINT "A"
 - 5 - CUSTOMER'S TARGET DIFF TRAVEL RANGE AT POINT A ON LEAF IS $0.0065-0.0100$
 - 6 - CORRESPONDS TO NASON PART NUMBER SM-1773

RELEASE NO.	PR - 22437
REPLACES	-

CHARACTERISTICS Δ
OPERATING FORCE - - - - 12 OZ MAX
RELEASE FORCE - - - - 2 OZ MIN
DIFFERENTIAL TRAVEL Δ - .005 MIN
OVERTRAVEL - - - - .011 MIN

ELECTRICAL DATA							
CONTACT ARRANGEMENT SPDT							
APPROVALS	<table border="1"> <tr> <td>KEMA CE</td> <td>11A 250V ~ T85 1E4</td> <td>CE</td> </tr> <tr> <td>UL CSA</td> <td>11A 1/4 HP 125 250 VAC 5A 30 VDC</td> <td>BRAND L190</td> </tr> </table>	KEMA CE	11A 250V ~ T85 1E4	CE	UL CSA	11A 1/4 HP 125 250 VAC 5A 30 VDC	BRAND L190
KEMA CE	11A 250V ~ T85 1E4	CE					
UL CSA	11A 1/4 HP 125 250 VAC 5A 30 VDC	BRAND L190					

DESIGN UNITS: INCH
TOLERANCES UNLESS NOTED:
NO PLACE .X \pm
ONE PLACE .X \pm
TWO PLACE .XX \pm
THREE PLACE .XXX \pm
FOUR PLACE .XXXX \pm
ANGLES \pm
THIRD ANGLE PROJECTION

DRAWN	VK	30OCT07
CHECK	RJ	30OCT07
THIS DRAWING COVERS A PROPRIETARY ITEM AND IS THE PROPERTY OF HONEYWELL. THIS DRAWING IS NOT TO BE COPIED OR USED WITHOUT THE PERMISSION OF HONEYWELL.		
INTERPRET PER ANSI Y14.5M-1982 OTHER HONEYWELL ENGINEERING STANDARDS MAY APPLY		
RASTER		

Honeywell			
TITLE SWITCH - BASIC			
SIZE	TYPE	DRAWING NAME	REV
B	I	141SM32-H2	3
SCALE	-	WEIGHT .006 LB MAX	SHEET 1 OF 1

4

3

2

1