



176PC14HD2



Pressure Sensors: Measurement Type:
Differential, Gage; Range: ± 14.0 in H₂O

Actual product appearance may vary.

Features

- Miniature package
- Low pressure measurement
- Calibrated null and span
- Temperature compensated for span over 0 °C to 50 °C [32 °F to 122 °F]

Potential Applications

Medical

- CPAP (Continuous Positive Airway Pressure) equipment
- Respirators and ventilators
- Blood glucose monitors
- Oxygen conservers
- Oxygen concentrators
- Nebulizers
- Blood cell separators

Environmental

- Filter monitoring equipment

Description

170PC Series pressure sensors provide a millivolt output that is proportional to the pressure applied. They operate from 0 inches to 7.0 inches of water to 0 inches to 27.68 inches of water using a single, positive supply voltage ranging from 10.0 Vdc to 16.0 Vdc. When pressure is applied, a differential output voltage, proportional to that pressure, is produced.

Product Specifications	
Measurement Type	Differential, Gage
Signal Conditioning	Unamplified
Pressure Range	± 14.0 in H ₂ O
Maximum Overpressure	140.0 in H ₂ O
Supply Voltage	10.0 Vdc typ., 16.0 Vdc max.
Compensated	Yes
Output Calibration	Yes
Response Time	1 ms max.
Termination	PCB
Port Style	Straight
Package Style	Honeywell - 100PC

Linearity	± 3.0% span max. (P2 > P1), ± 1.5% span max. (P2 < P1)
Typical Sensitivity	2.5 mV/in H ₂ O
Full Scale Span	35 mVdc typ.
Null Offset	0 mV typ.
Null Shift over Temperature	± 3.0 %
Span Shift Over Temperature	± 3.5% at 10 vdc
Repeatability & Hysteresis Error	± 0.25 % span typ.
Input Resistance	6.3 kOhm
Shock	Qualification tested to 150 g
Vibration	MIL-STD-202 Method 204 (10 Hz to 2000 Hz at 10g)
Weight	57 g [2 oz]
Operating Temperature Range	-40 °C to 85 °C [-40 °F to 185 °F]
Compensated Temperature Range	0 °C to 50 °C [32 °F to 122 °F]
Storage Temperature Range	-55 °C to 125 °C [-67 °F to 257 °F]
Media Compatibility	Port 1: Dry gases only. Port 2: Wetted materials. Polyester housing, silicon and silicon-based adhesives.
UNSPSC Code	411121
UNSPSC Commodity	411121 Transducers
Availability	Global
Series Name	170PC

MICRO SWITCH
a Honeywell Division

FED. MFG. CODE 91929

BRIDGE PRESSURE SENSOR

176PCH SERIES CHART 1

CATALOG LISTING

THIS DRAWING COVERS A PROPRIETARY ITEM AND IS THE PROPERTY OF MICRO SWITCH. A DIVISION OF HONEYWELL. THIS DRAWING IS NOT TO BE COPIED OR USED WITHOUT THE APPROVAL OF MICRO SWITCH

GENERAL OPERATING CHARACTERISTICS
(ELECTRICAL PERFORMANCE AT 10.00±0.01 VDC EXCITATION, 25°C)

CATALOG LISTING

176PC07HD2
176PC14HG2
176PC14HD2
176PC28HG2
176PC28HD2

PARAMETERS	PRESSURE RANGES (H ₂ O)	MIN	TYP	MAX	UNITS
NULL OFFSET	ALL	-2	0	+2	mV
NULL SHIFT $\triangle 2$ 0° ← 25° C → 50°			±3.0		
(P ₂ > P ₁) SPAN $\triangle 1$	0 TO 28 D&G	40	42	44	mV
	0 TO 14 D&G	33	35	37	
	0 TO 07 D&G	26	28	30	
(P ₂ > P ₁) SENSITIVITY PER IN. H ₂ O	0 TO 28 D&G		1.5		%SPAN
	0 TO 14 D&G		2.5		
	0 TO 07 D&G		4.0		
SPAN SHIFT $\triangle 2$ 0° ← 25° C → 50° AT 10 VDC AT 2mA	ALL			±3.5	%SPAN
			NONE		
LINEARITY (BFSL)	(P ₂ > P ₁)	0 TO 28 D&G		±3.0	%SPAN
	(P ₁ > P ₂)	0 TO 28 D		±1.5	
	(P ₂ > P ₁)	0 TO 14 D&G		±3.0	
	(P ₁ > P ₂)	0 TO 14 D		±1.5	
	(P ₂ > P ₁)	0 TO 07 D&G		±3.0	
	(P ₁ > P ₂)	0 TO 07 D		±1.5	
REPEATABILITY & HYSTERESIS	ALL		±0.25		%SPAN
STABILITY OVER 1 YEAR			±1.5		%SPAN
EXCITATION VOLTAGE		10	16		VDC
INPUT RESISTANCE		6.3K			OHMS
(P ₂ > P ₁) (P ₁ > P ₂) OVERPRESSURE	0 TO 28 D&G			140	IN. H ₂ O
	0 TO 14 D&G			140	
	0 TO 07 D&G			140	
TEMPERATURE STORAGE	ALL	-55° TO +125°C (-67° TO +257°F)			
OPERATE		-40° TO +85°C (-40° TO +185°F)			
COMPENSATED		0°C TO +50°C (+32° TO +122°F)			

CATALOG LISTING
176PCH SERIES CHART 1

PAGE 1 OF 1

ISSUE 7

CMH

CHECK

REVISIONS

A 201670 TSM 15NOV00

B 205984 DLT 15 JUL 02

C 0033081 DDN 27 AUG 07

CHECK

15NOV00

SAV

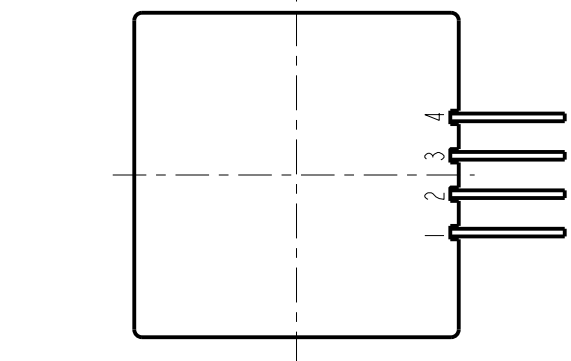
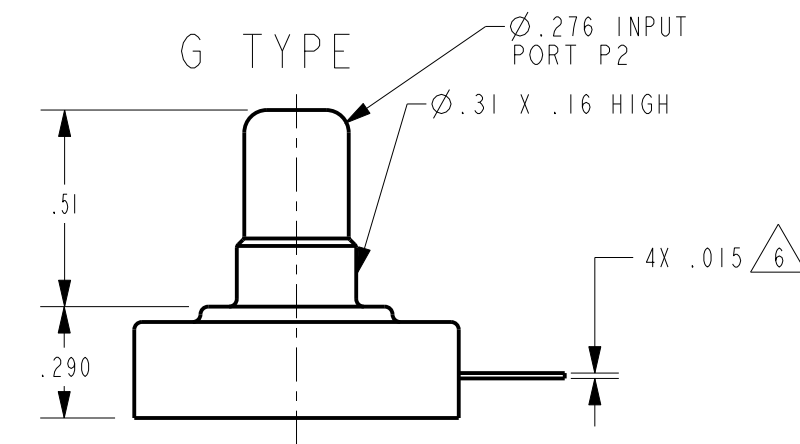
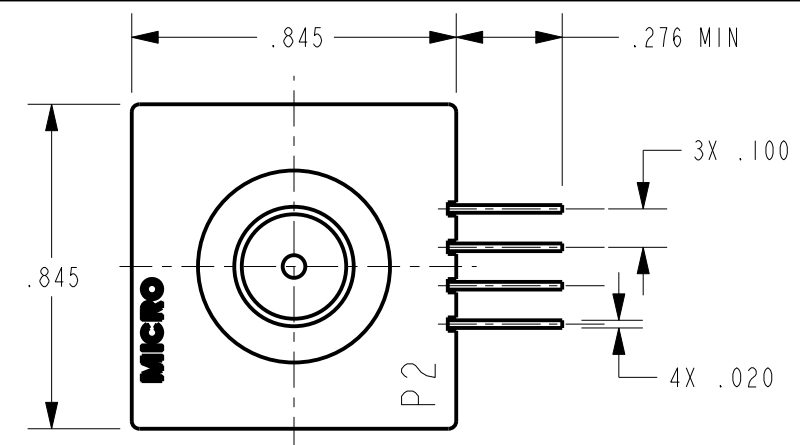
CHECK

15NOV00

DRAWN

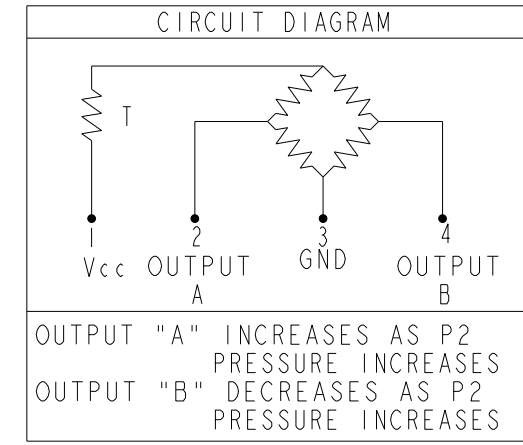
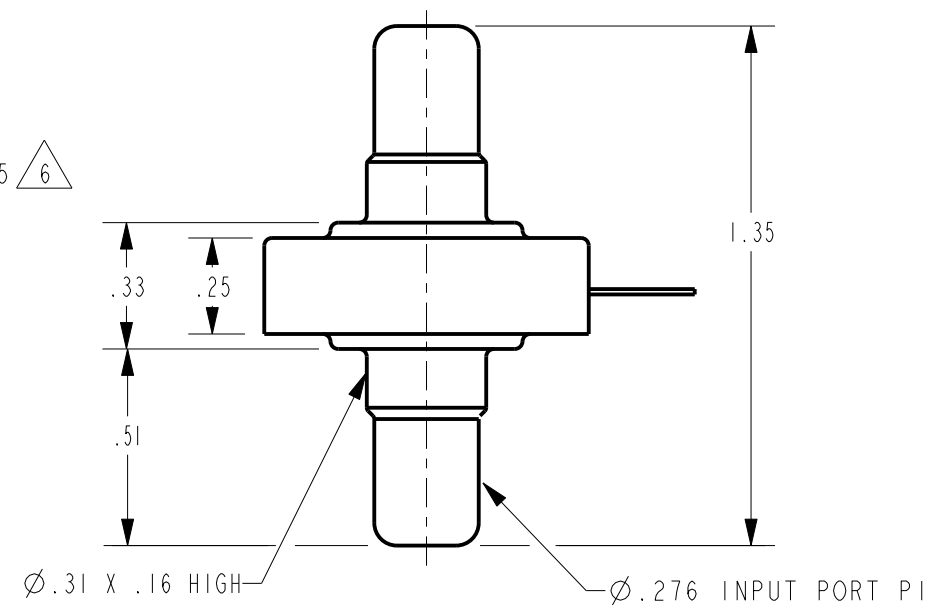
PTC/CAD 2D

REPLACES
RELEASE NO. CO-74682
27 AUG 07
CMH
CHECK
15NOV00
SAV
CHECK
15NOV00
DRAWN



- NOTES
- SPAN IS THE ALGEBRAIC DIFFERENCE BETWEEN END POINTS (OUTPUT AT MINIMUM AND MAXIMUM PRESSURE)
 - TEMPERATURE ERROR IS CALCULATED WITH RESPECT TO 25°C AND EXPRESSES THE DEVIATION THAT COULD OCCUR AS TEMPERATURE IS RAISED OR LOWERED TO LIMITS INDICATED
 - INPUT MEDIA: P₁ - DRY GASES ONLY: CONNECTION SIDE OF SENSOR
P₂ - LIMITED ONLY TO THOSE MEDIA THAT WILL NOT ATTACK POLYESTER, SILICON OR SILICONE BASED ADHESIVE
 - TERMINALS ARE PLATED FOR SOLDERING
 - LIMIT SOLDERING TO 315°C FOR 10 SECONDS MAX
 - LISTINGS ENDING WITH THE NUMBER 2 INDICATES STRAIGHT LEADS

D TYPE



THIRD ANGLE PROJECTION

SCALE 2 : 1

DO NOT SCALE PRINT

UNLESS OTHERWISE SPECIFIED TOLERANCES ARE

ONE PLACE (.0)	±.030
TWO PLACE (.00)	±.015
THREE PLACE (.000)	±.005
ANGLES	±

WEIGHT 2 OZ