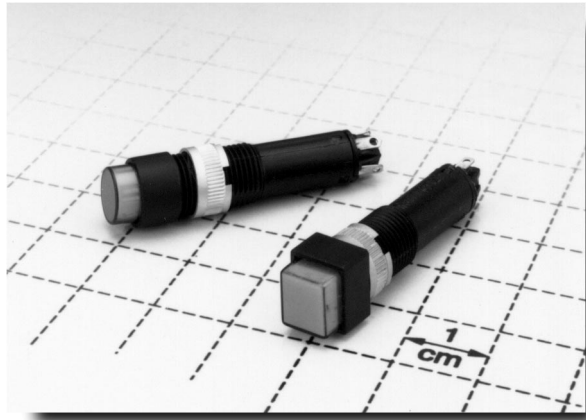


# C&K 8.1mm Series Illuminated Momentary/Latching Pushbuttons



## Features/Benefits

- Momentary or latching
- Requires limited front panel spacing
- LED or filament lamp illumination
- Long operating life—up to 1,000,000 cycles

## Typical Applications

- Test instrumentation
- Display panels
- Processing equipment

## How To Order

To order, select switch/housing, lens/color and illumination part numbers. Accessories, filament lamps and LEDs available separately, see catalog section L. Signal lamps available, consult Customer Service Center.

## Specifications

CONTACT RATING: 0.01 - 250 mA @ 0.02 - 42 V AC/DC.  
 CONTACT RESISTANCE:  $\leq 100$  milliohms.  
 CONTACT SYSTEM: 2 plate springs.  
 CONTACT ARRANGEMENT: SPST NO.  
 BOUNCE: < 10 ms.  
 ILLUMINATION: Bi-pin filament lamp T1 or LED.  
 FIXING: With threaded ring.  
 OPERATING LIFE: Momentary: 1,000,000 cycles.  
 Latching: 100,000 cycles.  
 OPERATING FORCE:  $\leq 2.6$  N.  
 OPERATING TEMPERATURE: Without lamp:  $-25^{\circ}$  C to  $+70^{\circ}$  C;  
 $-13^{\circ}$  F to  $+158^{\circ}$  F. With lamp:  $-25^{\circ}$  C to  $+55^{\circ}$  C;  
 $-13^{\circ}$  F to  $+131^{\circ}$  F.

FULL TRAVEL: 2.7 mm.  
 SWITCHING TRAVEL:  $1.0 \pm 0.2$  mm (NO).  
 LATCHING POSITION:  $1.8 \pm 0.2$  mm (NO).  
 DEGREE OF PROTECTION: IP40; > 1mm  $\phi$ , voltage protection against contact with wires.

## Materials

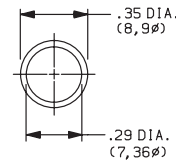
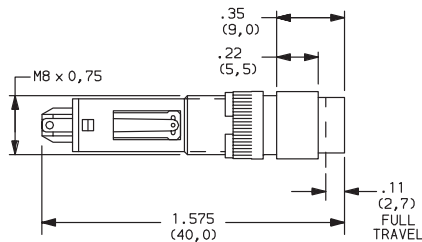
SWITCH HOUSING: PA 6, black.  
 BASE: Thermosetting plastic.  
 LENS: PC.  
 CONTACT MATERIAL: Au.  
 TERMINALS: Solder terminals, tin-plated.  
 FLAMMABILITY OF PLASTIC MATERIALS: UL 94 HB.

## 8.1 mm Mounting Hole Diameter

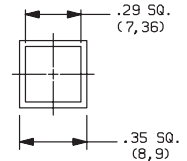


1.15116.0010000  
 5.05510.4701002  
 1.90180.4710000

SPST N.O.

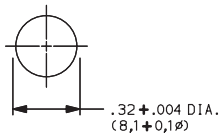


ROUND LENS



SQUARE LENS

## PANEL MOUNTING



PANEL THICKNESS  
 .02 - .24 (0,5 - 6,0)

SWITCH & HOUSING			TRANSPARENT LENS			ILLUMINATION	
PART NUMBER	FUNCTION	SCHEMATIC	PART NUMBER	COLOR	LENS	PART NUMBER	FILAMENT LAMP
1.15116.0010000	SPST NO Momentary		5.05510.4701002 5.05510.4701303 5.05510.4701402 5.05510.4701502	Colorless Red Yellow Green	Round	1.90180.4710000 1.90180.4720000 1.90180.4730000	6 V 12 V 24 V
1.15116.0110000	SPST NO Latching						
1.15116.0210000	SPST NO Momentary		5.05510.4711002 5.05510.4711303 5.05510.4711402 5.05510.4711502	Colorless Red Yellow Green	Square	1.90180.4710000 1.90180.4720000 1.90180.4730000	6 V 12 V 24 V
1.15116.0310000	SPST NO Latching						