

**Z-series  
ZSI 6-2/FC**

**Weidmüller Interface GmbH & Co. KG**  
Klingenbergstraße 16  
D-32758 Detmold  
Germany  
Fon: +49 5231 1429-0  
Fax: +49 5231 14292083  
www.weidmueller.com

**Spring connection with tension clamp Technology**

Tension clamp technology is a universal contact system for all common conductor connection types. Its fantastic level of flexibility makes the tension clamp a profitable alternative connection.

**General ordering data**

Type	ZSI 6-2/FC
Order No.	<a href="#">1814690000</a>
Version	Z-series, Fuse terminal, Rated cross-section: 6 mm <sup>2</sup> , Tension clamp connection, Black, Direct mounting
GTIN (EAN)	4032248358489
Qty.	25 pc(s).

## Data sheet

### Z-series ZSI 6-2/FC

**Weidmüller Interface GmbH & Co. KG**  
 Klingenbergstraße 16  
 D-32758 Detmold  
 Germany  
 Fon: +49 5231 1429-0  
 Fax: +49 5231 14292083  
 www.weidmueller.com

## Technical data

### Dimensions and weights

Width	8.1 mm	Width (inches)	0.319 inch
Height	70 mm	Height (inches)	2.756 inch
Depth	50 mm	Depth (inches)	1.969 inch
Depth including DIN rail	51 mm	Net weight	20.72 g

### Temperatures

Continuous operating temp., min.	-50 °C	Continuous operating temp., max.	120 °C
----------------------------------	--------	----------------------------------	--------

### Material data

Material	Wemid	Colour	Black
UL 94 flammability rating	V-0		

### System specifications

Version	Tension-clamp connection, Fuse cartridge, Without LED, for plug-in cross-connector, One end without connector	End cover plate required	Yes
Number of potentials	1	Number of levels	1
No. of clamping points per level	2	Number of potentials per tier	1
Levels cross-connected internally	No	PE connection	No
Mounting rail	TS 35	N-function	No
PE function	No	PEN function	No

### Additional technical data

Explosion-tested version	No	Installation advice	Direct mounting
Open sides	right	Type of mounting	Snap-on

### CSA rating data

Certificate No. (CSA)	200039-1152892	Current size C (CSA)	25 A
Voltage size C (CSA)	300 V	Wire cross section max. (CSA)	10 AWG
Wire cross section min. (CSA)	22 AWG		

### Conductors for clamping (additional connection)

Conductor cross-section, flexible plus plastic collar DIN 46228/1, further connection, max.	6 mm <sup>2</sup>
---	-------------------

**Z-series  
ZSI 6-2/FC**

**Weidmüller Interface GmbH & Co. KG**  
 Klingenbergstraße 16  
 D-32758 Detmold  
 Germany  
 Fon: +49 5231 1429-0  
 Fax: +49 5231 14292083  
 www.weidmueller.com

**Technical data**
**Conductors for clamping (rated connection)**

Blade size	4.0 x 0.8 mm	Clamping range, rated connection, max.	10 mm <sup>2</sup>
Clamping range, rated connection, min.	0.33 mm <sup>2</sup>	Connection direction	top
Cross-section for connected conductor, finely stranded with wire-end ferrules and plastic collars DIN 46228/4, rated connection, min.	0.5 mm <sup>2</sup>	Gauge to IEC 60947-1	A5
Number of connections	2	Stripping length	10 mm
Type of connection	Tension clamp connection	Wire connection cross section, finely stranded with wire-end ferrules DIN 46228/1, rated connection, max.	6 mm <sup>2</sup>
Wire connection cross section, finely stranded with wire-end ferrules DIN 46228/1, rated connection, min.	0.5 mm <sup>2</sup>	Wire connection cross section, finely stranded, max.	10 mm <sup>2</sup>
Wire connection cross section, solid core max. rated connection	10 mm <sup>2</sup>	Wire connection cross section, solid core, min. rated connection	0.5 mm <sup>2</sup>
Wire connection cross-section, finely stranded with wire-end ferrules and plastic collars DIN 46228/4, rated connection, max.	6 mm <sup>2</sup>	Wire connection cross-section, finely stranded, min.	0.5 mm <sup>2</sup>

**Display element**

Operating voltage for display, max.	400 V	Type of voltage for indicator	AC/DC
-------------------------------------	-------	-------------------------------	-------

**Fuse terminals**

Cartridge fuse	Blade fuse type C	Display	Without LED
Fuse holder (cartridge holder)	pluggable	Operating voltage, max.	250 V
Power loss for short-circuit protection only for a composite arrangement	1.9 W at 24.0 A @ 28°C	Power loss for short-circuit protection only for an individual arrangement	3.0 W at 30.0 A @ 24°C
Type of voltage for indicator	AC/DC		

**Rating data**

Rated cross-section	6 mm <sup>2</sup>	Rated voltage	500 V
Rated voltage to adjoining terminal	250 V	Rated current	30 A
Current at maximum wires	30 A	Standards	DIN 72581-3, IEC 60947-7-3
Volume resistance according to IEC 60947-7-x	0.78 mΩ	Rated impulse withstand voltage	6 kV
Pollution severity	3		

**UL rating data**

Certificate No. (cURus)	E60693	Conductor size Factory wiring max. (cURus)	10 AWG
Conductor size Factory wiring min. (cURus)	22 AWG	Conductor size Field wiring max. (cURus)	10 AWG
Conductor size Field wiring min. (cURus)	22 AWG	Voltage size C (cURus)	300 V

**Data sheet**

**Z-series  
ZSI 6-2/FC**

**Weidmüller Interface GmbH & Co. KG**  
 Klingenbergstraße 16  
 D-32758 Detmold  
 Germany  
 Fon: +49 5231 1429-0  
 Fax: +49 5231 14292083  
 www.weidmueller.com

**Technical data**

**Classifications**

ETIM 3.0	EC000899	ETIM 4.0	EC000899
ETIM 5.0	EC000899	ETIM 6.0	EC000899
UNSPSC	30-21-18-11	eClass 5.1	27-14-11-16
eClass 6.2	27-14-11-16	eClass 7.1	27-14-11-16
eClass 8.1	27-14-11-16	eClass 9.0	27-14-11-16
eClass 9.1	27-14-11-16		

**Product information**

Descriptive text ordering data	Automotive fuses are not available from Weidmüller.
Descriptive text technical data	Fuse continuous current max. 80 % IN.
Descriptive text accessories	Status display using a bi-directional LED. With use of Pudenz fuses.

**Approvals**

Approvals



ROHS	Conform
------	---------

**Downloads**

Approval/Certificate/Document of Conformity	<a href="#">DE_PT1143_20160418_1462_ISSUE01.pdf</a>
Engineering Data	<a href="#">EPLAN, WSCAD</a>

**Safety note**

Safety notice	<a href="#">Safety Information</a>
---------------	------------------------------------

**Data sheet**

**Z-series**  
**ZSI 6-2/FC**

**Weidmüller Interface GmbH & Co. KG**  
Klingenbergstraße 16  
D-32758 Detmold  
Germany  
Fon: +49 5231 1429-0  
Fax: +49 5231 14292083  
[www.weidmueller.com](http://www.weidmueller.com)

**Drawings**



**Z-series  
ZSI 6-2/FC**

**Weidmüller Interface GmbH & Co. KG**  
 Klingenbergstraße 16  
 D-32758 Detmold  
 Germany  
 Fon: +49 5231 1429-0  
 Fax: +49 5231 14292083  
 www.weidmueller.com

**Accessories**

**End brackets**



**Klippon® Connect with clamping yoke Technology**

The high reliability and variety of designs of the terminal blocks with clamping yoke connections make planning easier and optimises operational safety. Klippon® Connect provides a proven response to a range of different requirements.

**General ordering data**

Type	Order No.	Version	GTIN (EAN)	Qty.
WEW 35/1	<a href="#">1059000000</a>	W-Series, End bracket	4008190172282	50 pc(s).
WEW 35/2	<a href="#">1061200000</a>	W-Series, End bracket	4008190030230	100 pc(s).

**End brackets**



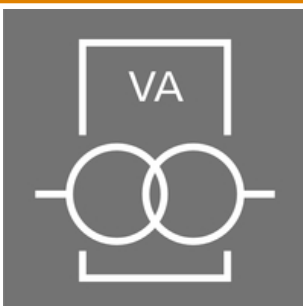
**Spring connection with tension clamp Technology**

Tension clamp technology is a universal contact system for all common conductor connection types. Its fantastic level of flexibility makes the tension clamp a profitable alternative connection.

**General ordering data**

Type	Order No.	Version	GTIN (EAN)	Qty.
ZEW 35/2	<a href="#">8630740000</a>	Z-series, End bracket	4032248348916	20 pc(s).
ZEW 35	<a href="#">9540000000</a>	Z-series, End bracket	4008190956264	20 pc(s).

**Test plug**



**Current and voltage transformer wiring**

Our test disconnect terminal blocks featuring spring and screw connection technology allow you to create all the important converter circuits for measuring current, voltage and power in a safe and sophisticated way.

**General ordering data**

Type	Order No.	Version	GTIN (EAN)	Qty.
PS 2.3 RT	<a href="#">0180400000</a>	Accessories, Test plug	4008190060121	20 pc(s).

**Data sheet**

**Z-series  
ZSI 6-2/FC**

**Weidmüller Interface GmbH & Co. KG**  
 Klingenbergstraße 16  
 D-32758 Detmold  
 Germany  
 Fon: +49 5231 1429-0  
 Fax: +49 5231 14292083  
 www.weidmueller.com

**Accessories**

**Slotted screwdriver**

Slotted screwdriver with rounded blade SD DIN 5265, ISO 2380/2, output to DIN 5264, ISO 2380/1. ChromTop tip, SoftFinish grip



**General ordering data**

Type	Order No.	Version	GTIN (EAN)	Qty.
SDS 0.8X4.0X100	<a href="#">9008340000</a>	Screwdriver, Blade width (B): 4 mm, Blade length: 100 mm, Blade thickness (A): 0.8 mm	4032248056293	1 pc(s).

**Test adapter**



**Spring connection with tension clamp Technology**  
 Tension clamp technology is a universal contact system for all common conductor connection types. Its fantastic level of flexibility makes the tension clamp a profitable alternative connection.

**General ordering data**

Available until	Type	Order No.	Version	GTIN (EAN)	Qty.
2012-10-31	T020702A01:00	<a href="#">1780670000</a>	Accessories, Test adapter, 9 A	4032248180202	25 pc(s).

**Z-series  
ZSI 6-2/FC**

**Weidmüller Interface GmbH & Co. KG**  
 Klingenbergstraße 16  
 D-32758 Detmold  
 Germany  
 Fon: +49 5231 1429-0  
 Fax: +49 5231 14292083  
 www.weidmueller.com

**Accessories**
**End plates**

**Spring connection with tension clamp Technology**

Tension clamp technology is a universal contact system for all common conductor connection types. Its fantastic level of flexibility makes the tension clamp a profitable alternative connection.

**General ordering data**

Type	Order No.	Version	GTIN (EAN)	Qty.
ZAP ZDU6-2 SW	<a href="#">1814710000</a>	Z-series, End plate	4032248359417	50 pc(s).

**ZQV 6**

**Spring connection with tension clamp Technology**

Tension clamp technology is a universal contact system for all common conductor connection types. Its fantastic level of flexibility makes the tension clamp a profitable alternative connection.

**General ordering data**

Type	Order No.	Version	GTIN (EAN)	Qty.
ZQV 6/4 GE	<a href="#">1627870000</a>	Accessories, Cross-connector, 41 A	4008190200442	60 pc(s).
ZQV 6/3 GE	<a href="#">1627860000</a>	Accessories, Cross-connector, 41 A	4008190200435	60 pc(s).
ZQV 6/24 GE	<a href="#">1908990000</a>	Accessories, Cross-connector, 41 A	4032248535309	10 pc(s).
ZQV 6/2 GE	<a href="#">1627850000</a>	Accessories, Cross-connector, 41 A	4008190200428	60 pc(s).
ZQV 6/32 GE	<a href="#">1733640000</a>	Accessories, Cross-connector, 41 A	4008190994334	10 pc(s).



## Z-series ZSI 6-2/FC

**Weidmüller Interface GmbH & Co. KG**  
 Klingenbergstraße 16  
 D-32758 Detmold  
 Germany  
 Fon: +49 5231 1429-0  
 Fax: +49 5231 14292083  
 www.weidmueller.com

# Accessories

## Blank



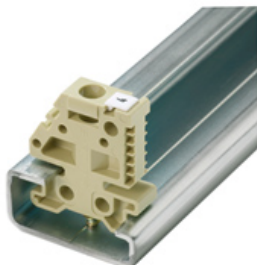
WS markers are the perfect match for the W-series connectors. Thanks to their system compatibility, the WS tags can also be used with the I-series and the Z-series. The large marking surfaces do not only permit long character strings but also multi-line text. WS markers are ideal for labels with long, customised character strings. Thanks to the proven MultiCard format, printing with laser printer, PrintJet ADVANCED, plotter or MC-Mobilo is possible.

- Can be fitted in strips or individually
- Markers in proven MultiCard format

### General ordering data

Type	Order No.	Version	GTIN (EAN)	Qty.
WS 12/6.5	<a href="#">1609920000</a>	WS, Terminal marker, 12	4008190203511	540 pc(s).
MC NE WS		x 6.5 mm, Pitch in mm (P): 6.50 Weidmueller, Allen-Bradley, White		

## End bracket



### Klippon® Connect with clamping yoke Technology

The high reliability and variety of designs of the terminal blocks with clamping yoke connections make planning easier and optimises operational safety. Klippon® Connect provides a proven response to a range of different requirements.

### General ordering data

Type	Order No.	Version	GTIN (EAN)	Qty.
EW 35	<a href="#">0383560000</a>	Accessories, End bracket	4008190181314	50 pc(s).
EW 35 GR	<a href="#">0383530000</a>	Accessories, End bracket	4008190027322	50 pc(s).
7032				
EW 35/ SCHA/M3	<a href="#">0258660000</a>	Accessories, End bracket	4008190033477	20 pc(s).

**Z-series  
ZSI 6-2/FC**

**Weidmüller Interface GmbH & Co. KG**  
Klingenbergstraße 16  
D-32758 Detmold  
Germany  
Fon: +49 5231 1429-0  
Fax: +49 5231 14292083  
www.weidmueller.com

**Accessories**

**Covers**



**Spring connection with tension clamp Technology**

Tension clamp technology is a universal contact system for all common conductor connection types. Its fantastic level of flexibility makes the tension clamp a profitable alternative connection.

**General ordering data**

Type	Order No.	Version	GTIN (EAN)	Qty.
ZAD 2/4	<a href="#">1609080000</a>	Z-series, Cover	4008190263317	20 pc(s).

**Markers**



Extensive range of accessories for the FieldPower® boxes.

Cable seals, plug-in connectors, locking elements and much more.

**General ordering data**

Type	Order No.	Version	GTIN (EAN)	Qty.
WS 12/6 MC NE WS	<a href="#">1609900000</a>	WS, Terminal marker, 12 x 6 mm, Pitch in mm (P): 6.00 Weidmueller, Allen-Bradley, White	4008190203467	600 pc(s).

**Blank**



ZS markers - in proven MultiCard-format - have been developed specifically for the Z-series. They have a large printing area. The hinged mechanism even allows access to cross-connectors without dismantling. Quick installation is guaranteed by the fact that the single tags are clipped on in strips. The single tags are easy to separate.

- Hinged marker area
- Can be fitted in strips or individually
- Markers in proven MultiCard format

**General ordering data**

Type	Order No.	Version	GTIN (EAN)	Qty.
ZS 12/6 MC NE WS	<a href="#">1610020000</a>	ZS, Terminal marker, 12 x 6 mm, Pitch in mm (P): 6.00	4008190444600	400 pc(s).

**Data sheet**

**Z-series  
ZSI 6-2/FC**

**Weidmüller Interface GmbH & Co. KG**  
 Klingenbergstraße 16  
 D-32758 Detmold  
 Germany  
 Fon: +49 5231 1429-0  
 Fax: +49 5231 14292083  
 www.weidmueller.com

**Accessories**

Weidmueller, Allen-Bradley,  
 White

**Custom printing**



The Dekafix (DEK) marker is the universal marker for all conductor and plug-in connectors as well as for electronic sub-assemblies. The system is ideal for short number sequences and covers a wide range of ready-printed markers.

Strips for fast installation in only one work step. The printing is easy to read, rich in contrast and available in various widths.

- Large range of ready-to-use markers
- Strips for fast installation
- Terminal markers, suitable for all Weidmüller cable connectors
- Available as blank MultiCard or with standard printing

**General ordering data**

Type	Order No.	Version	GTIN (EAN)	Qty.
DEK 5/6 MC SDR	<a href="#">1609830000</a>	Dekafix, Terminal marker, 5 x 6 mm, Pitch in mm (P): 6.00 Weidmueller, To customer specification	4008190456603	200 pc(s).