

ALL OF SOLDER TAILS & PEGS

- NOTES :
- MATERIAL : THERMOPLASTIC, HIGH TEMP.  
W/ 30% G/F, UL 94 V-0, COLOR: BLACK
  - CONTACTS : PHOSPHOR BRONZE
  - PEG : BRASS
  - FINISH:
    - CONTACT: GOLD PLATING(SEE TABLE) ON CONTACT AREA.  
0.05µm[2µ"] MIN. GOLD PLATING ON SOLDER AREA.  
1.25µm[50µ"] MIN. NICKEL UNDERPLATING OVERALL.
    - PEG: 2.5µm[100µ"] MIN. BRIGHT TIN PLATING ON SOLDER TAILS, 1.25µm[50µ"] MIN. NICKEL UNDERPLATING OVERALL.
  - REFLOW SOLDER CAPABLE TO 260°C PER TYCO SPEC. 109-201, CONDITION B.
  - LATCH PART NUMBER: 1775868

LTR	REVISION RECORD	EN	DW	DATE
0	FIRST RELEASED	--	SH	26/JAN
			WK	2006

TOLERANCES UNLESS OTHERWISE SPECIFIED:

0 PLC	±
1 PLC	±0.2
2 PLC	±0.2
3 PLC	±0.2
ANGLES	± 3'

DW	S. HOU	17-JAN-2006
CHK	W.J. KE	17-JAN-2006
APVD	W.J. KE	17-JAN-2006

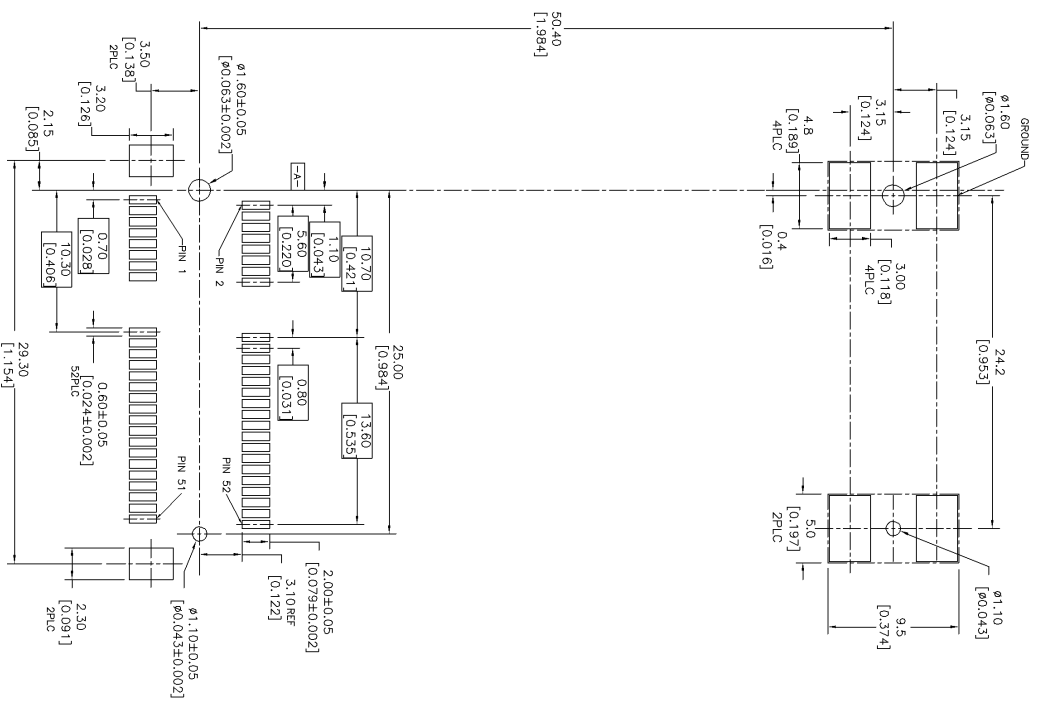
FINISH	SEE NOTE
QUALIFICATION TEST REPORT	501-57812
WEIGHT	0.9 GRAM

GOLD FLASH	1775861-2
10µ" MIN.	1775861-1
GOLD PLATING	PART NUMBER

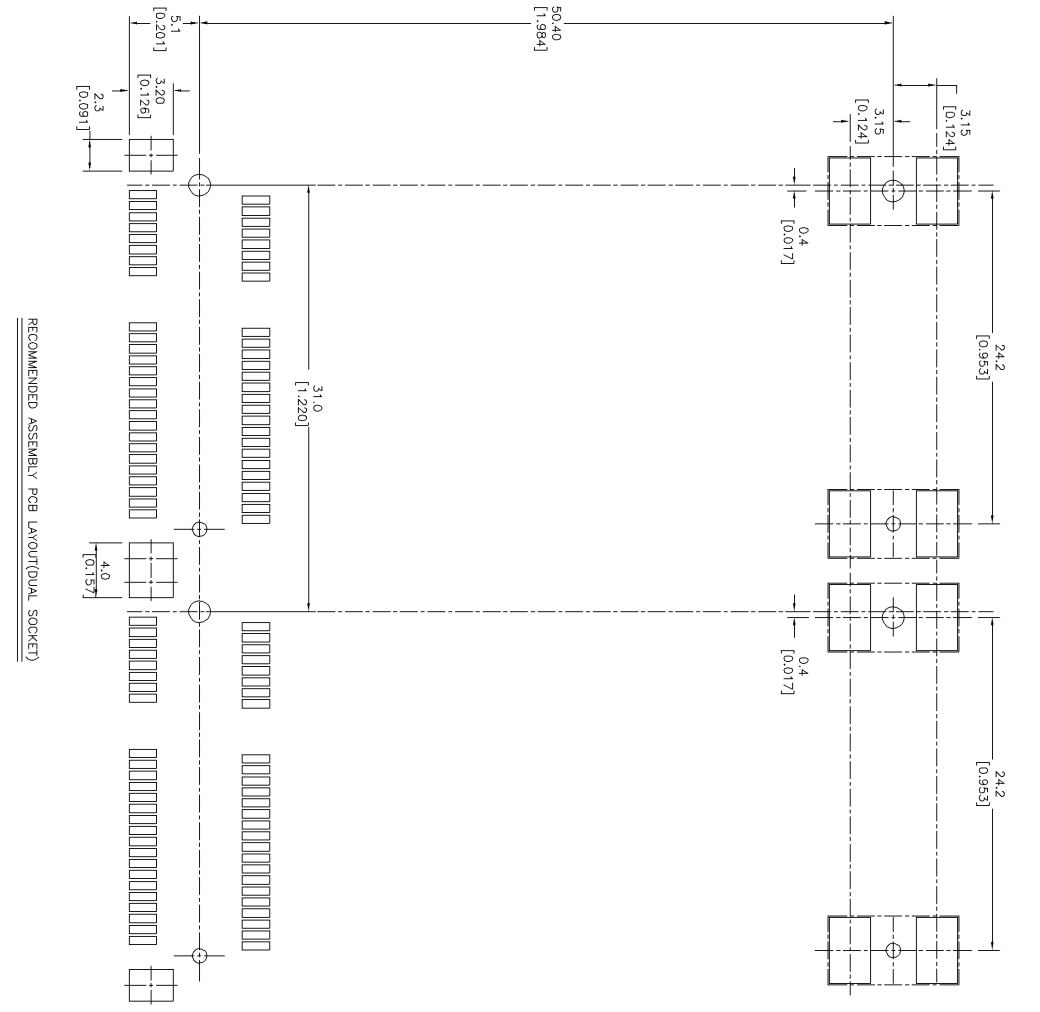
tyco  
Mini PCI Express Header  
4.0 HEIGHT, SMT

LOC	SIZE	DRAWING NO	REV
DW	A3	C-1775861	0
SCALE	--	SHEET	1 OF 6

8 7 6 5 4 3 2 1 CUSTOMER DRAWING



RECOMMENDED ASSEMBLY PCB LAYOUT  
PCB TOLERANCE:  $\pm 0.05$



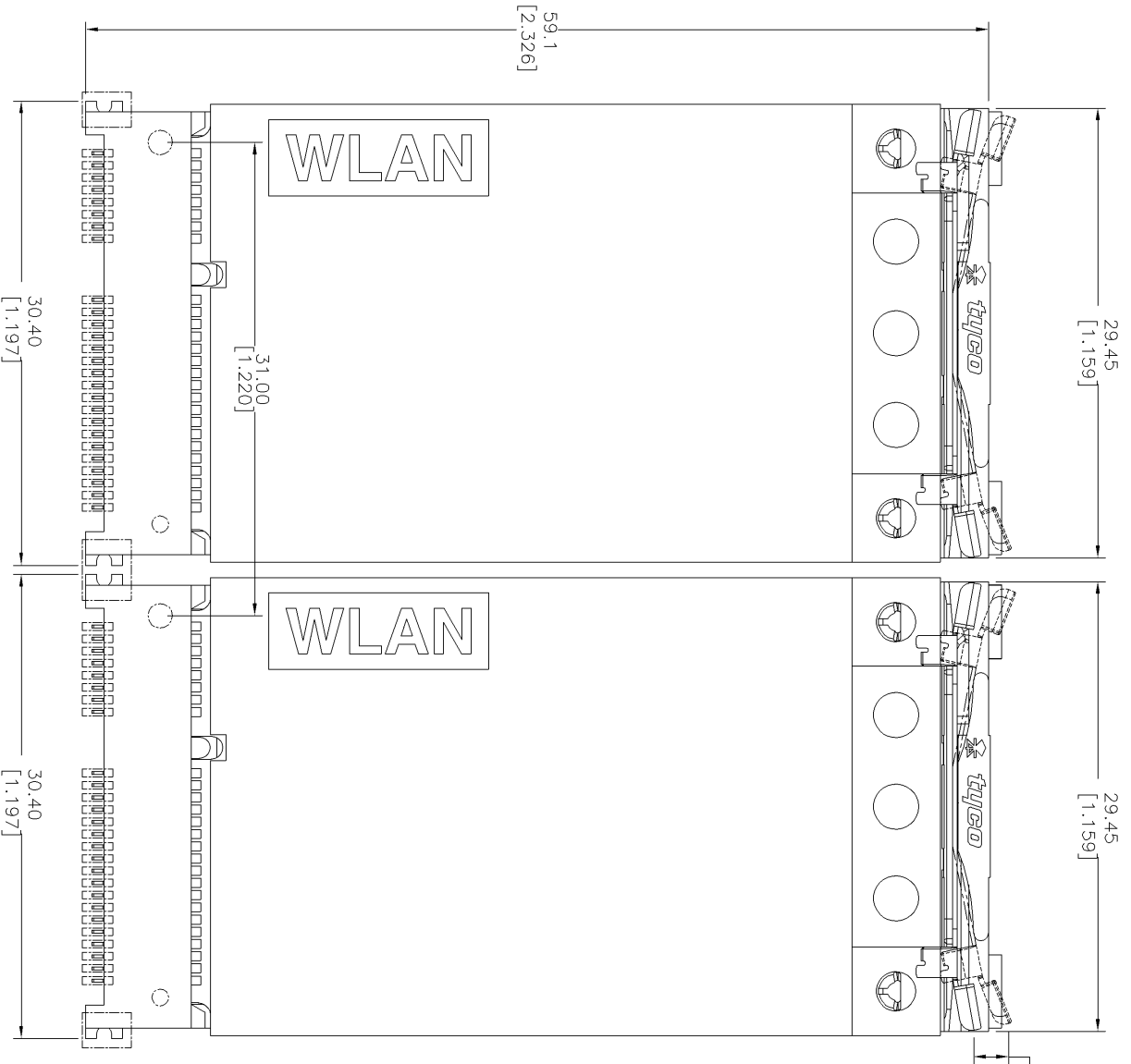
RECOMMENDED ASSEMBLY PCB LAYOUT(DUAL SOCKET)

8 7 6 5 4 3 2 1

LTR	SEE SHEET 1	REVISION RECORD	EN	DWN	CHK	DATE
-----	-------------	-----------------	----	-----	-----	------

FINISH		TOLERANCES UNLESS OTHERWISE SPECIFIED:		DWN		S. HOU	
0 PLC $\pm 0.05$		1 PLC $\pm 0.05$		17-JAN-2006		TYCO HOLDINGS (BERMUDA)	
2 PLC $\pm 0.05$		2 PLC $\pm 0.05$		W.J. KE		VII LTD, TAIWAN BRANCH	
3 PLC $\pm 0.05$		3 PLC $\pm 0.05$		17-JAN-2006		NAME	
ANGLES $\pm 3^\circ$		APVD		W.J. KE		tyco	
MATERIAL		PRODUCT SPEC		17-JAN-2006		Electronics	
QUALIFICATION TEST REPORT		SCALE		DW		A3	
WEIGHT		DRAWING NO		C-1775861		REV	
MINI PCI EXPRESS HEADER		SHEET		2 OF 6		O	
4.0 HEIGHT, SMT		SHEET		2 OF 6		A	

8  
7  
6  
5  
4  
3  
2  
1



LTR	SEE SHEET 1	ECN	DWN	CHK	DATE
REVISION RECORD					

TOLERANCES UNLESS OTHERWISE SPECIFIED:		DWN	S. HOU
0 P.C.	± 0.3	CHK	17-JAN-2006
1 P.C.	± 0.2		W.U. KE
2 P.C.	± 0.2		17-JAN-2006
3 P.C.	± 0.2		W.U. KE
ANGLES	± 3'		17-JAN-2006

FINISH	QUALIFICATION TEST REPORT	LOC	SIZE	DRAWING NO	REV
	WEIGHT	DW	A3	C-1775861	0
		SCALE	--		

**tyco**  
**Electronics**  
TYCO HOLDINGS (BERMUDA)  
VII LTD. TAIWAN BRANCH

MINI PCI EXPRESS HEADER  
4.0 HEIGHT, SMT

CUSTOMER DRAWING

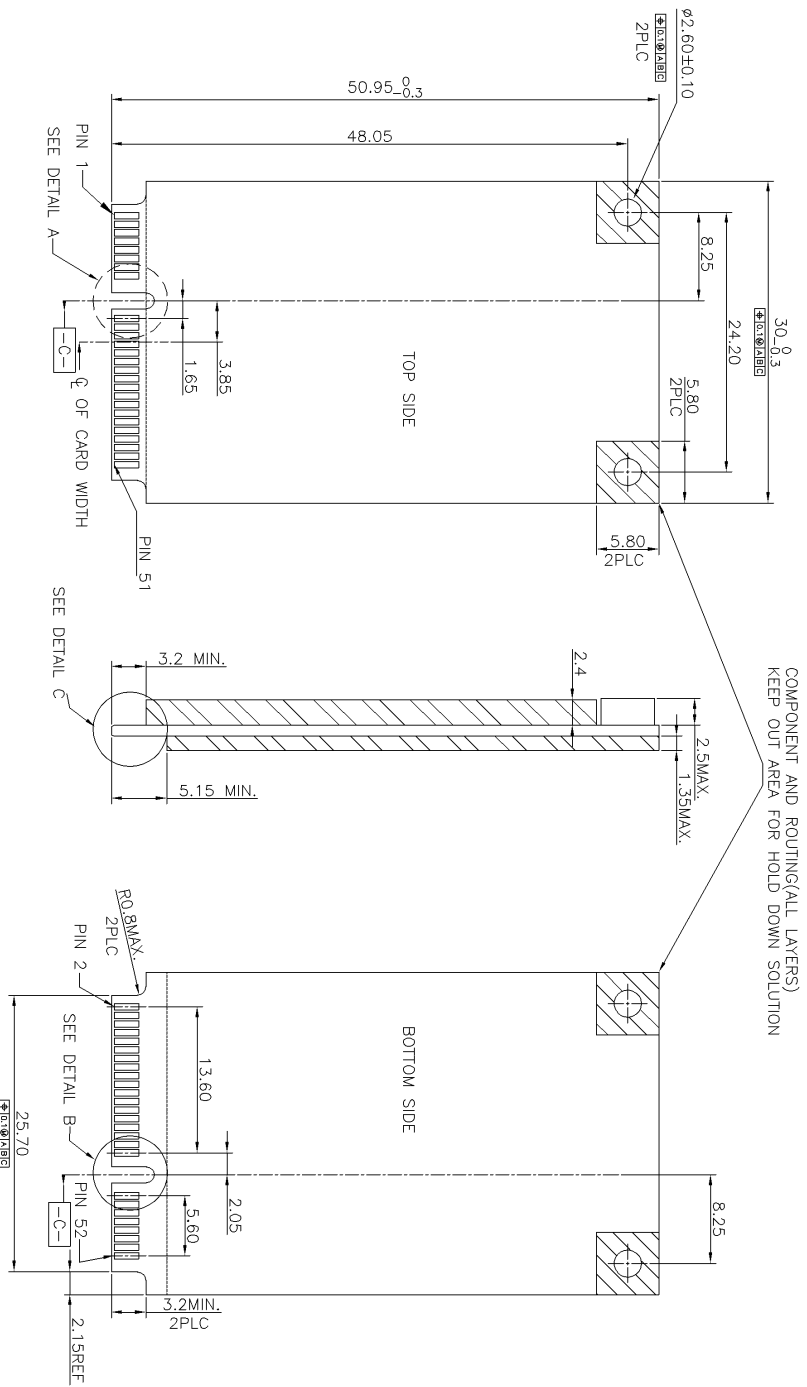
A

B

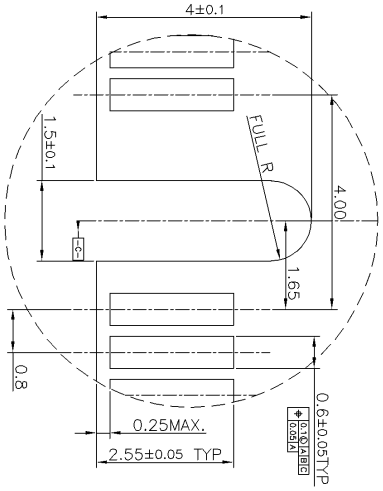
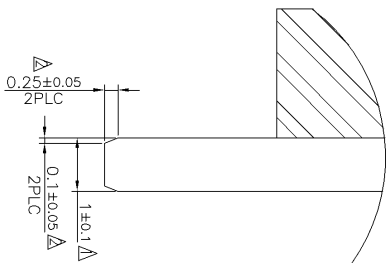
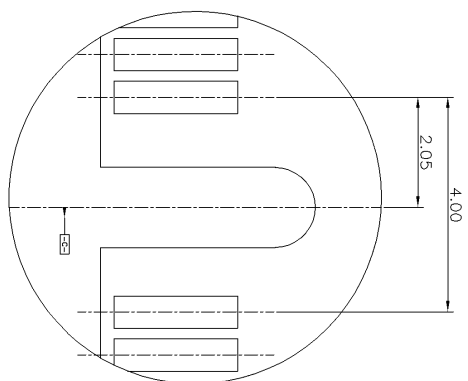
C

D

THIS INFORMATION IS CONFIDENTIAL AND IS DISCLOSED TO YOU ON CONDITION THAT NO FURTHER DISCLOSURE IS MADE BY YOU TO OTHER THAN AMP PERSONNEL WITHOUT WRITTEN AUTHORIZATION FROM AMP (TAIWAN) LTD. DIMENSIONS IN MILLIMETERS. DO NOT SCALE PRINT.



NOTE:  
△CARD THICKNESS APPLIES ACROSS TABS AND INCLUDES PLATING AND/OR METALIZATION  
△BEVEL MUST BE FREE OF CUTTING BURRS



TOLERANCES UNLESS OTHERWISE SPECIFIED:		DWN	
0 PLC	± 0.05	S. HOU	17-JAN-2006
2 PLC	± 0.05	W. J. KE	17-JAN-2006
3 PLC	± 0.05	W. J. KE	17-JAN-2006
ANGLES ± 3°		APVD	
		W. J. KE	17-JAN-2006
MATERIAL		PRODUCT SPEC	
		MINI PCI EXPRESS HEADER	
		4.0 HEIGHT, SMT	
FINISH		QUALIFICATION TEST REPORT	
		WEIGHT	
		LOC	
		SIZE	
		DRAWING NO	
		C-1775861	
		REV	
		O	
		SHEET	
		4 OF 6	

A

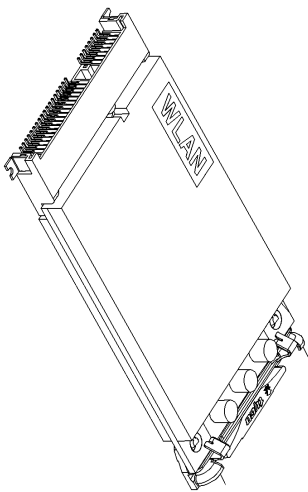
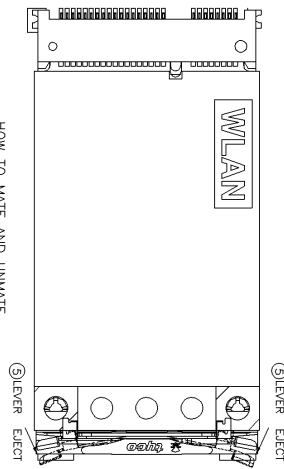
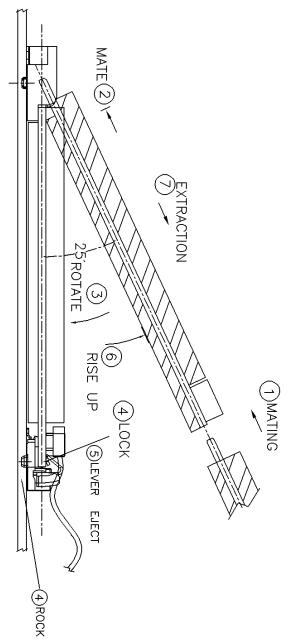
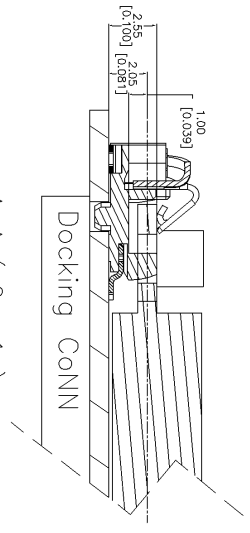
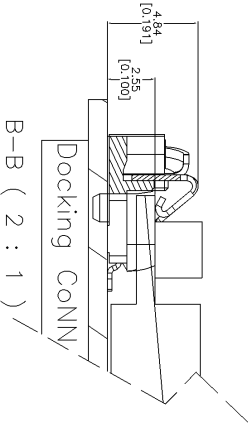
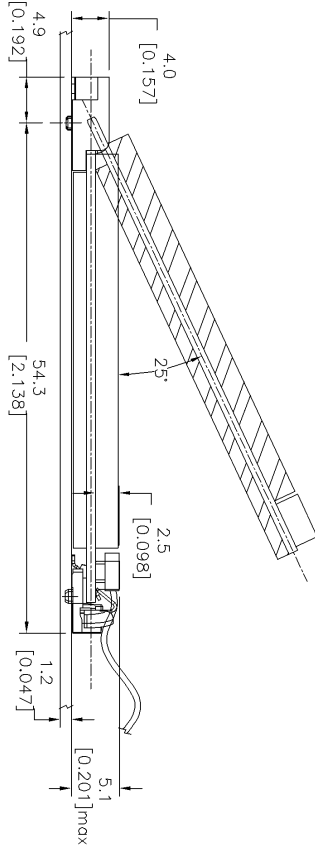
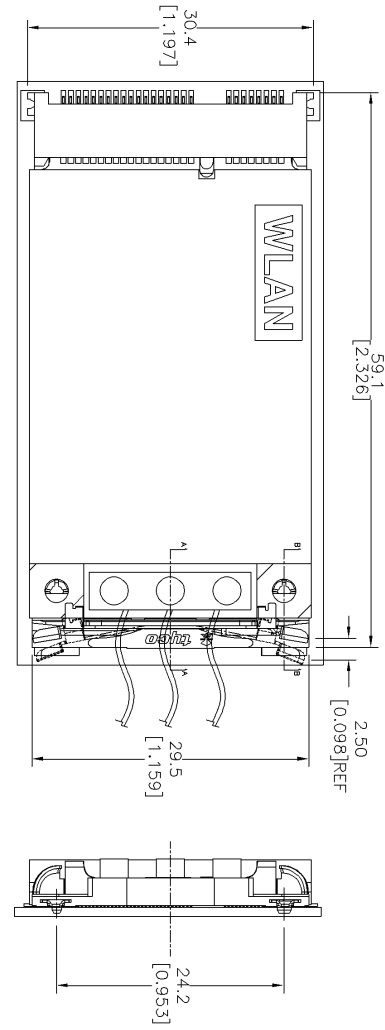
B

C

D

LTR	SEE SHEET 1	ECN	DWN	CHK	DATE
	REVISION RECORD				

THIS INFORMATION IS CONFIDENTIAL AND IS DISCLOSED TO YOU ON CONDITION THAT NO FURTHER DISCLOSURE IS MADE BY YOU TO OTHER THAN AMP PERSONNEL WITHOUT WRITTEN AUTHORIZATION FROM AMP (TAIWAN) LTD. DIMENSIONS IN MILLIMETERS. DO NOT SCALE PRINT.



HOW TO MATE AND UNMATE  
MATE: ① ~ ⑤  
UNMATE: ⑥ ~ ⑦

HOW TO MATE AND UNMATE  
MATE: ① ~ ④  
UNMATE: ⑤ ~ ⑦

LTR	SEE SHEET 1	EN	DWN	CHK	DATE
	REVISION RECORD				

A-A (2:1)

B-B (2:1)

TOLERANCES UNLESS OTHERWISE SPECIFIED:		DWN	S. HOU
0 P.C.	± 0.3	17-JAN-2006	TYCO HOLDINGS (BERMUDA)
1 P.C.	± 0.2	W.U. KE	Electronics
2 P.C.	± 0.2	17-JAN-2006	VII LTD. TAIWAN BRANCH
3 P.C.	± 0.2	W.U. KE	
ANGLES	± 3°	17-JAN-2006	
MATERIAL		APVD	MINI PCI EXPRESS HEADER
		PRODUCT SPEC	4.0 HEIGHT, SMT
FINISH		QUALIFICATION TEST REPORT	
		WEIGHT	
		SCALE	

LOC SIZE DRAWING NO  
DW A3 C-1775861

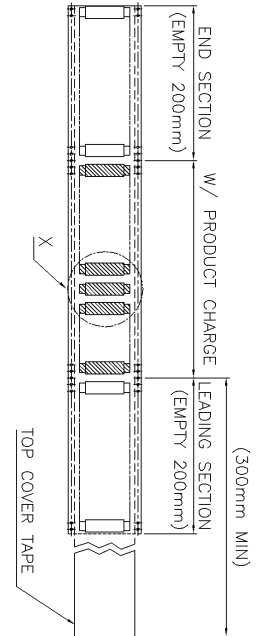
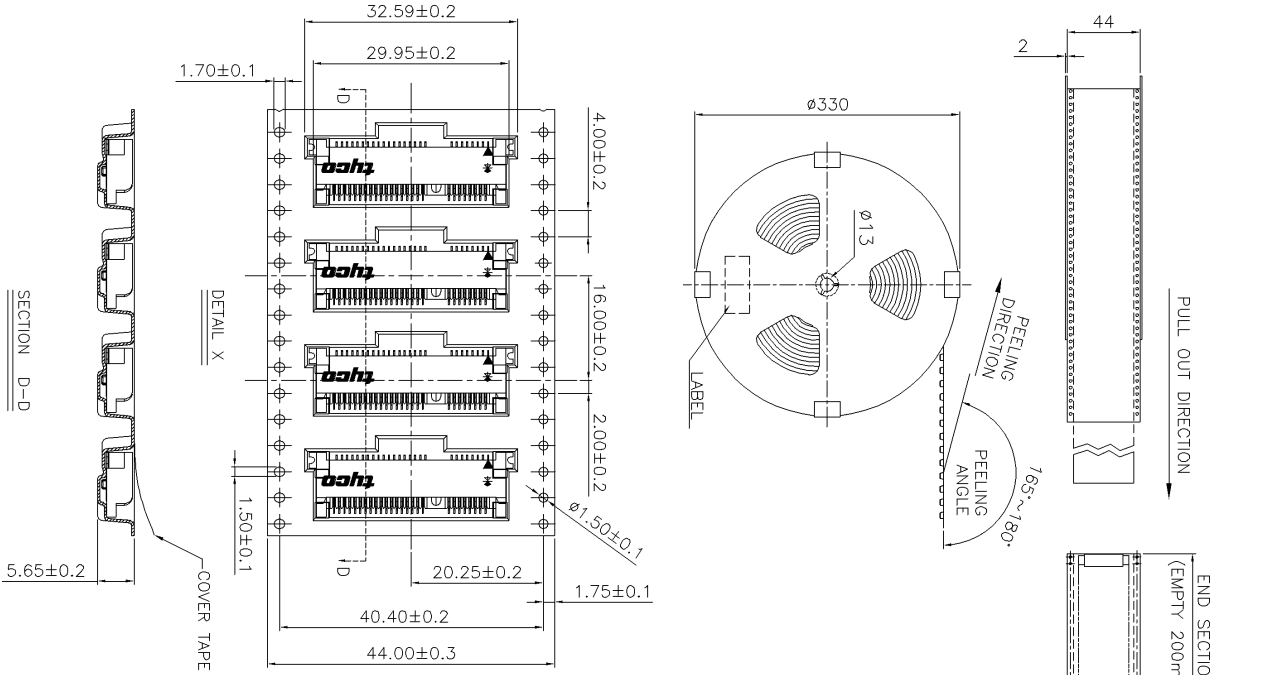
REV O

A

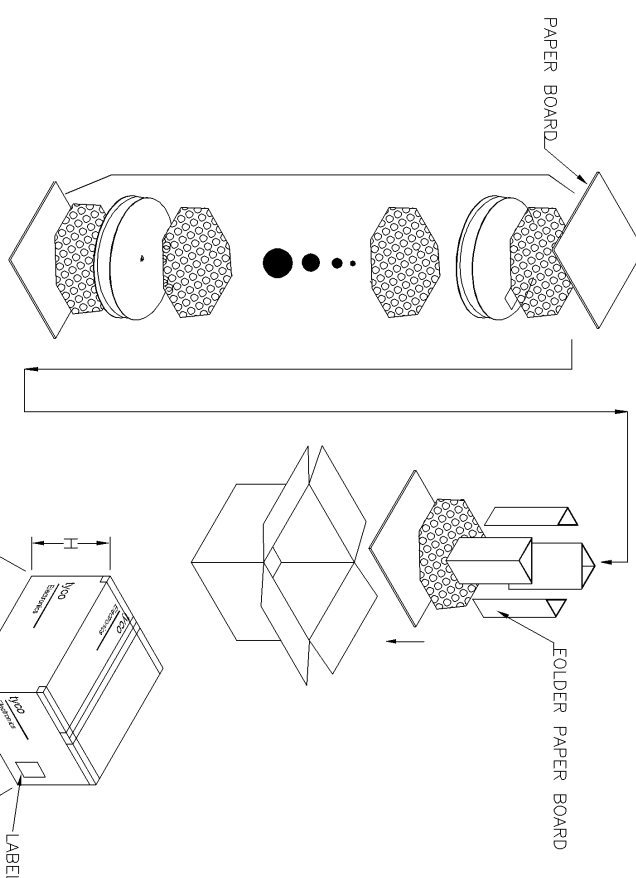
B

C

D



- NOTES:
1. MATERIAL :
    - 1.1 EMBOSSED CARRIER: PS
    - 1.2 COVER TAPE: PS
    - 1.3 SHIPPING CARTON: CORRUGATED FIBER
  2. DIMENSION :
    - 2.1 REEL: W=44.4
    - 2.2 SHIPPING CARTON: L=335, W=335, H=248
  3. QUANTITY :
    - 3.1 PRIMARY PACKING:600PCS/REEL.
    - 3.2 SECONDARY PACKING:4REELS/CARTON(2400PCS/CARTON).
  4. WEIGHT :
  - 4.1. GROSS WEIGHT :1472g/REEL,5890g/CARTON.
  - 4.2. NET WEIGHT:690g/REEL,2760g/CARTON.
  5. PEELING RESISTANCE: 10.2gf~71.4gf.
  6. PEELING SPEED: 300mm/minutes.



SECTION D-D

DETAIL X

COVER TAPE

PAPER BOARD

FOLDER PAPER BOARD

LABEL

TOLERANCES UNLESS OTHERWISE SPECIFIED:	
0 PLC	± 0.3
1 PLC	± 0.2
2 PLC	± 0.2
3 PLC	± 0.2
ANGLES ± 3°	
MATERIAL	SEE NOTE
FINISH	SEE NOTE

DWN	S. HOU	17-JAN-2006
CHK	W.J. KE	17-JAN-2006
APVD	W.J. KE	17-JAN-2006
PRODUCT SPEC		
APPLICATION SPEC		
WEIGHT		

LOC	SIZE	DRAWING NO	REV
DW	A3	C-1775861	0
SCALE			

FINISH		SEE NOTE
MATERIAL		SEE NOTE
TOLERANCES UNLESS OTHERWISE SPECIFIED:		
0 PLC		± 0.3
1 PLC		± 0.2
2 PLC		± 0.2
3 PLC		± 0.2
ANGLES		± 3°
MATERIAL		SEE NOTE
FINISH		SEE NOTE

LTR	SEE SHEET 1
REVISION RECORD	
EN	
DWN	DATE

8 7 6 5 4 3 2 1  
CUSTOMER DRAWING

A

B

C

D