

REV	ECN NO.	DR	DATE
1	---	ERIC	2013-01-15
2	---	ERIC	2013-01-23

spec ref	tolerance std	surface	0.X	0.XX	0.XXX	0°	angular
-	TOLERANCES UNLESS OTHERWISE SPECIFIED	linear	±0.5	±0.25	±0.10	±2°	

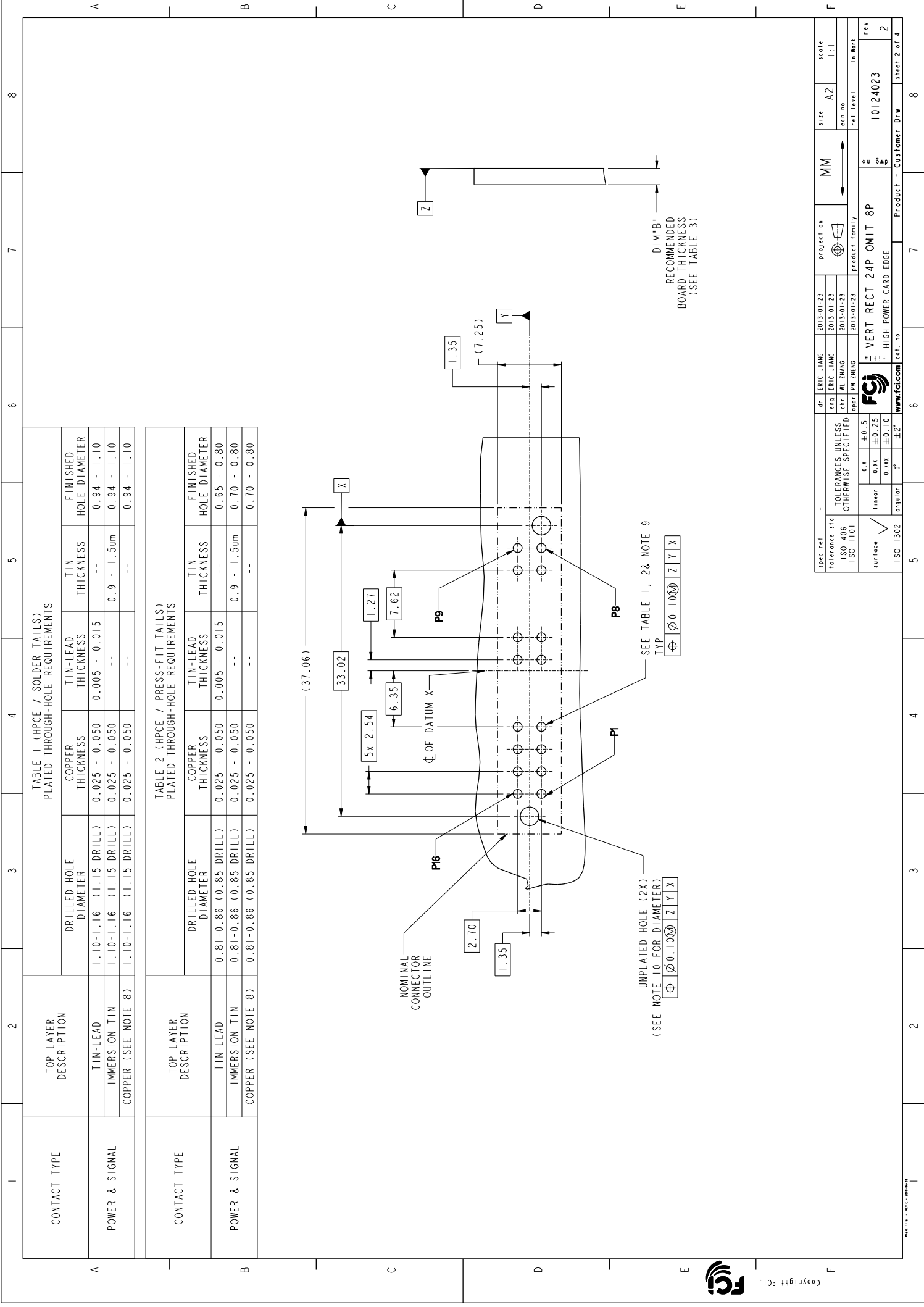
dr	eng	chr	appr	PM	ZHENG
ERIC JIANG	ERIC JIANG	WL ZHANG			

projection	MM	site	A2	scale
1st angle				1:1

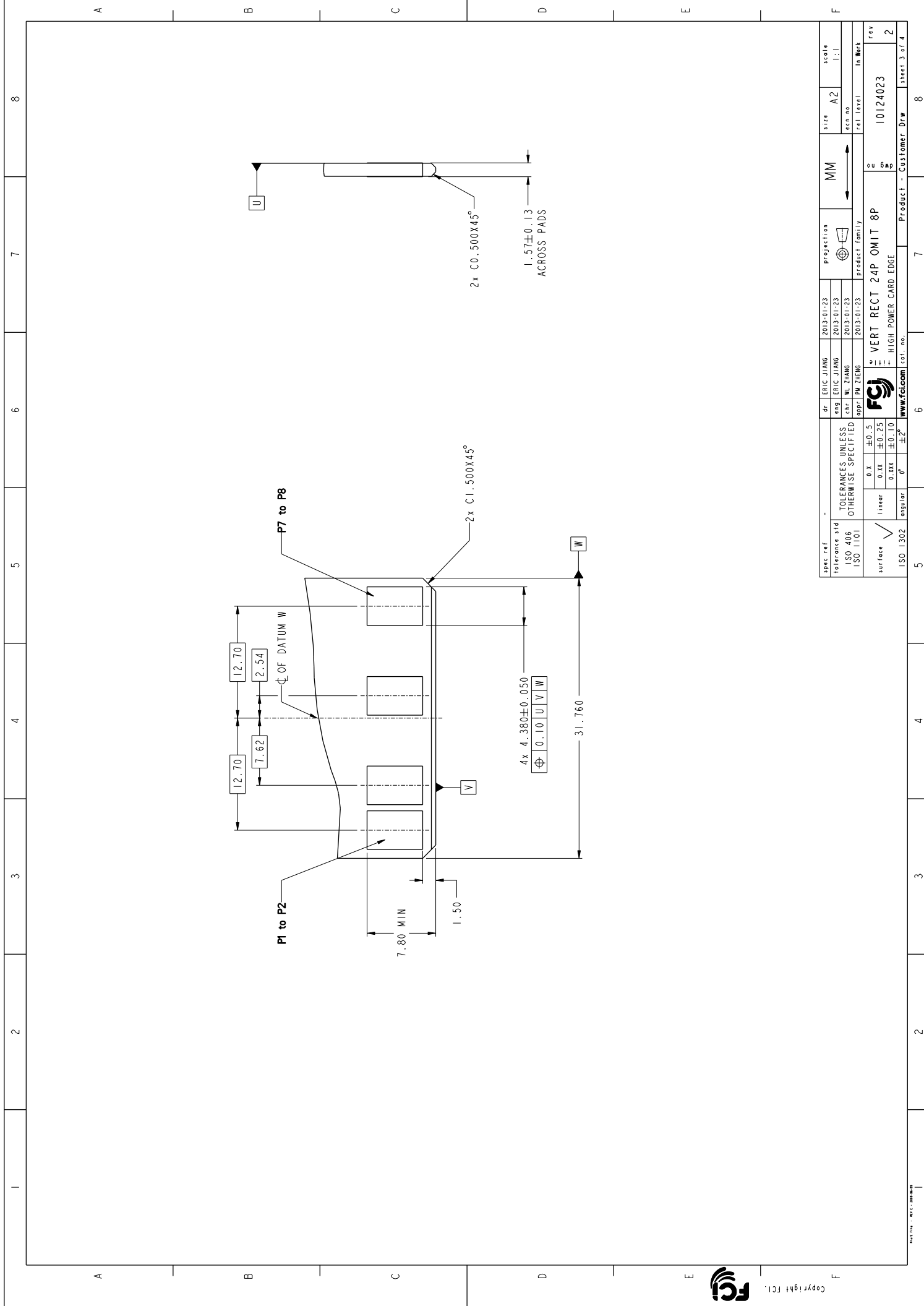
ecn no	rel level	product family	part no	rev
			10124023	2



Copyright FCI



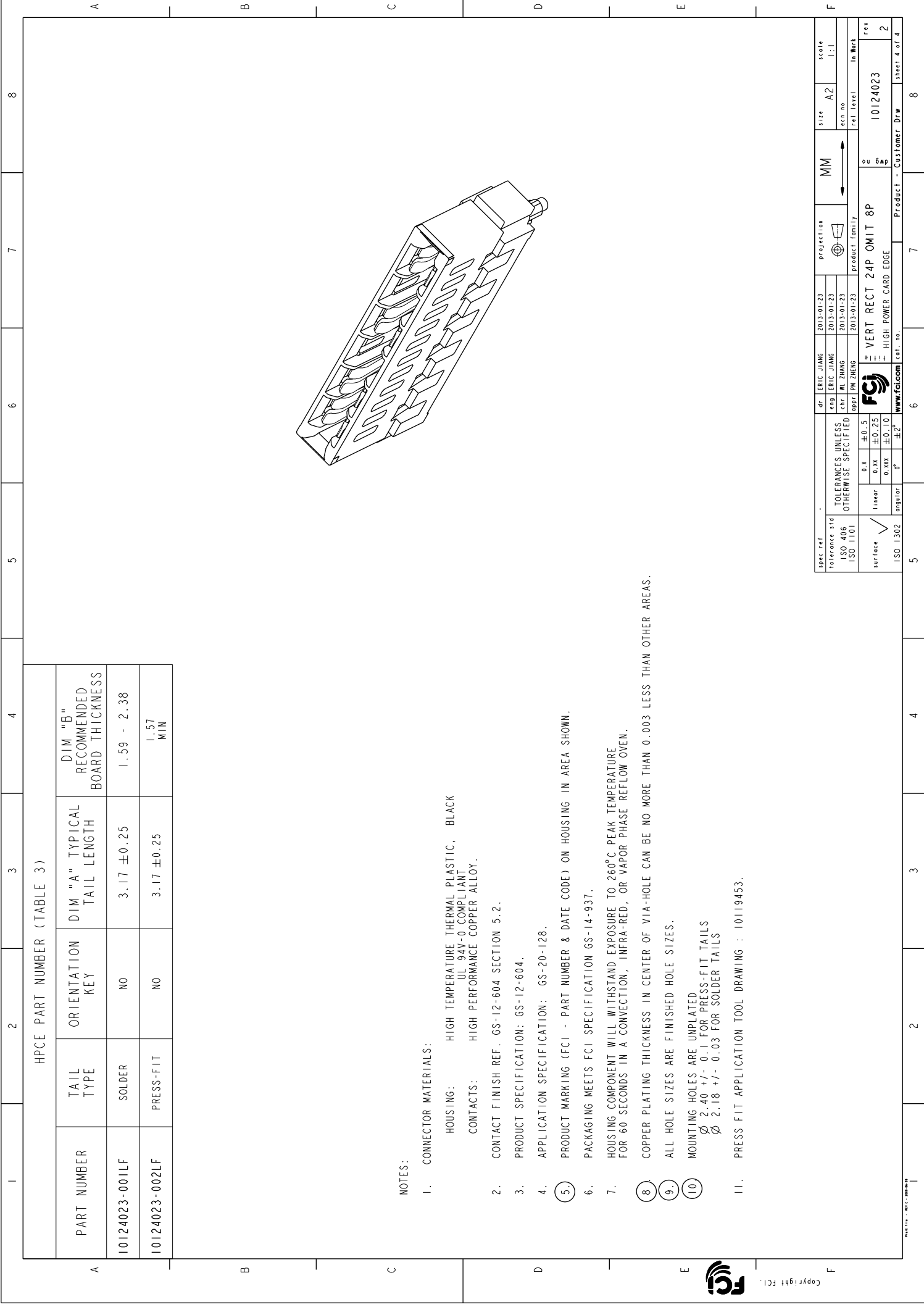
spec ref	-	dr	ERIC JIANG	2013-01-23	projection	MM	scale	1:1
tolerance std	ISO 406	eng	ERIC JIANG	2013-01-23			site	A2
	ISO 1101	chr	WL ZHANG	2013-01-23			ecm no	
surface	ISO 1302	appr	PM ZHENG	2013-01-23	product family		rel level	
							rel level	10124023
							part no	
							product	VERT RECT 24P OMIT 8P
							customer	Product - Customer Draw
							sheet	2 of 4



spec ref	-	dr	ERIC JIANG	2013-01-23	projection	MM	site	A2	scale	1:1			
tolerance std	TOLERANCES UNLESS OTHERWISE SPECIFIED	eng	ERIC JIANG	2013-01-23			ecn no rel level	10124023 In Work	rev 2				
ISO 406		chr	WL ZHANG	2013-01-23									
ISO 1101		appr	PM ZHENG	2013-01-23									
surface	<table border="1"> <tr> <td>linear</td> <td>±0.5</td> </tr> <tr> <td>0.XX</td> <td>±0.25</td> </tr> <tr> <td>0.XXX</td> <td>±0.10</td> </tr> </table>	linear	±0.5	0.XX	±0.25	0.XXX	±0.10			VERT RECT 24P OMIT 8P HIGH POWER CARD EDGE		Product - Customer Draw sheet 3 of 4	
linear	±0.5												
0.XX	±0.25												
0.XXX	±0.10												
ISO 1302	angular 0° ±2°	www.fs.com cat. no.		6		7		8					



Copyright FSJ



HPCE PART NUMBER (TABLE 3)

PART NUMBER	TAIL TYPE	ORIENTATION KEY	DIM "A" TYPICAL TAIL LENGTH	DIM "B" RECOMMENDED BOARD THICKNESS
10124023-001LF	SOLDER	NO	3.17 ±0.25	1.59 - 2.38
10124023-002LF	PRESS-FIT	NO	3.17 ±0.25	1.57 MIN

NOTES:

- CONNECTOR MATERIALS:
HOUSING: HIGH TEMPERATURE THERMAL PLASTIC, BLACK
UL 94V-0 COMPLIANT
CONTACTS: HIGH PERFORMANCE COPPER ALLOY.
- CONTACT FINISH REF. 6S-12-604 SECTION 5.2.
- PRODUCT SPECIFICATION: 6S-12-604.
- APPLICATION SPECIFICATION: 6S-20-128.
- PRODUCT MARKING (FCI - PART NUMBER & DATE CODE) ON HOUSING IN AREA SHOWN.
- PACKAGING MEETS FCI SPECIFICATION 6S-14-937.
- HOUSING COMPONENT WILL WITHSTAND EXPOSURE TO 260°C PEAK TEMPERATURE FOR 60 SECONDS IN A CONVECTION, INFRA-RED, OR VAPOR PHASE REFLOW OVEN.
- COPPER PLATING THICKNESS IN CENTER OF VIA-HOLE CAN BE NO MORE THAN 0.003 LESS THAN OTHER AREAS.
- ALL HOLE SIZES ARE FINISHED HOLE SIZES.
- MOUNTING HOLES ARE UNPLATED
 \varnothing 2.40 +/- 0.1 FOR PRESS-FIT TAILS
 \varnothing 2.18 +/- 0.03 FOR SOLDER TAILS
- PRESS FIT APPLICATION TOOL DRAWING : 10119453.

spec ref	-	dr	ERIC JIANG	2013-01-23	projection	MM	size	A2	scale
tolerance std	TOLERANCES UNLESS OTHERWISE SPECIFIED	eng	ERIC JIANG	2013-01-23					1:1
ISO 406		chr	WL ZHANG	2013-01-23					
ISO 1101		appr	PM ZHENG	2013-01-23	product family		rel level	10124023	rev
surface	\checkmark linear \square 0.X ±0.5 \square 0.XX ±0.25 \square 0.XXX ±0.10 \square ° ±2°								2
ISO 1302									sheet 4 of 4

