

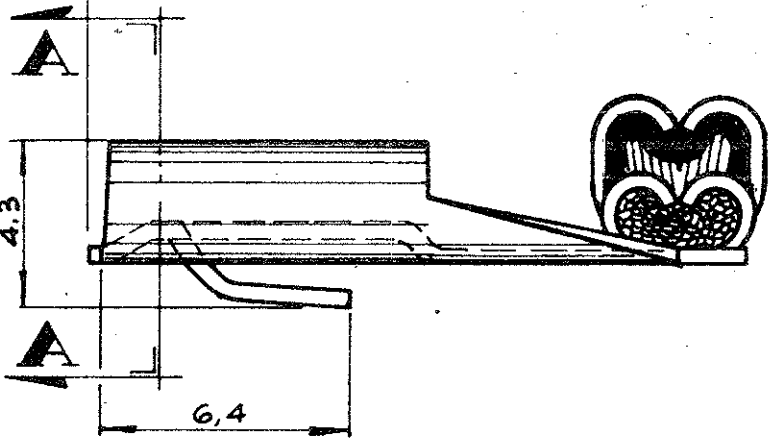
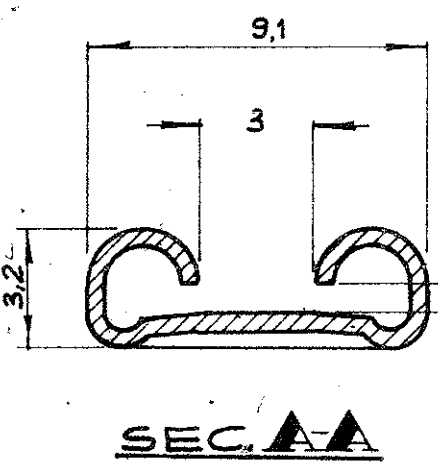
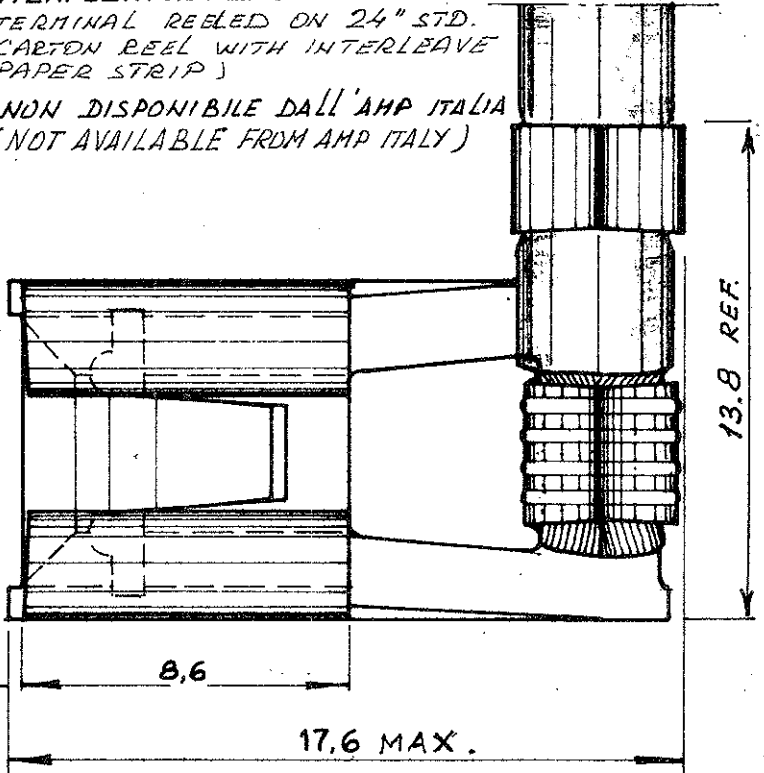
NOTE: * REVERSE REELED FOR AMP. O. MATOR.

1) FORNITO IN BOBINA ϕ 24" CON CARTA INTERPOSTA TRA LE SPIRE DEI TERMINALI (TERMINAL REELED ON 24" STD. CARTON REEL WITH INTERLEAVE PAPER STRIP)

2) NON DISPONIBILE DALL'AMP ITALIA (NOT AVAILABLE FROM AMP ITALY)

NUMBER
C-180373

MATERIALE & FINITURA	
180373-1	BRASS
180373-2	TIN PL. BRASS
180373-3	PHOSPHOR BRONZE
180373-4	SILVER OBSOLETE BR.
180373-5	TIN PL. PHOS. BR.
180373-6	SILVER OBSOLETE BR.
180453-1 *	BRASS
180453-2 *	TIN PL. BRASS
180453-3 *	SILVER OBSOLETE BR.
180453-4 *	SILVER PL. BRASS
1-180453-2 *	TIN PL. BRASS (NOTA 1)
1-180373-3	PH. BRONZE (NOTA 1 & 2) OBSOLETE
2-180453-5	PH. BR. (NOTA *1 & 2)



ADATTO PER LINGUETTA DA 0,8 mm DI SPES. (SUITABLE FOR TAB, 0.8 mm THK.)

DIMENSIONS IN MM DO NOT SCALE PRINT

J	REVISED PER 0101-96	A.C.	10-3-94
H	ADDED PIN 2-180453-5 REQUESTED FROM AMP SPAIN 0006-93	AV	4-5-93
G	ADDED PIN 1-180373-3 AND NOTE 2 (REQUESTED FROM AMP SPAIN)	TC	8 FEB 91
F	INS. DIA WAS - 5 mm MAX	la	31 MAY 88
E	ADDED PIN 1-180453-2 AND NOTE 1	Poff	27/6/87
D	ADDED 180373-6	RR	10-10
C	13.8 WAS 13.3	R.R.	25-4 68
C	ADDED TABLE OF MATERIAL & FINISH	R.R.	25-4 68
B	690 WAS 600	F.T.	12-13-63
A	252 WAS 262	b.s	12-13-63
LTR	REVISION RECORD	DR	CHK
DR	A. MERLINO	DE	
CHK	R. BALLER	APP	

© 1963 BY AMP INCORPORATED ALL RIGHTS RESERVED. AMP PRODUCTS COVERED BY PATENTS AND/OR PATENTS PENDING.

CUSTOMER COPY REFERENCE ONLY

AMP AMP - ITALIA
CORSO PESCHIERA 209/6
TORINO - ITALIA

CLASS .312" SERIES

WIRE RANGE INSULATION TYPE
1-2.5 mm² | 2.4 ÷ 3.8 DIA | F.F.

TOLERANCE EXCEPT AS NOTED: ±0.4 mm ±2° 5-1

LOC I A NO C-180373 REV AV

NAME .312" SERIES FLAG FASTEN-ON REC.