

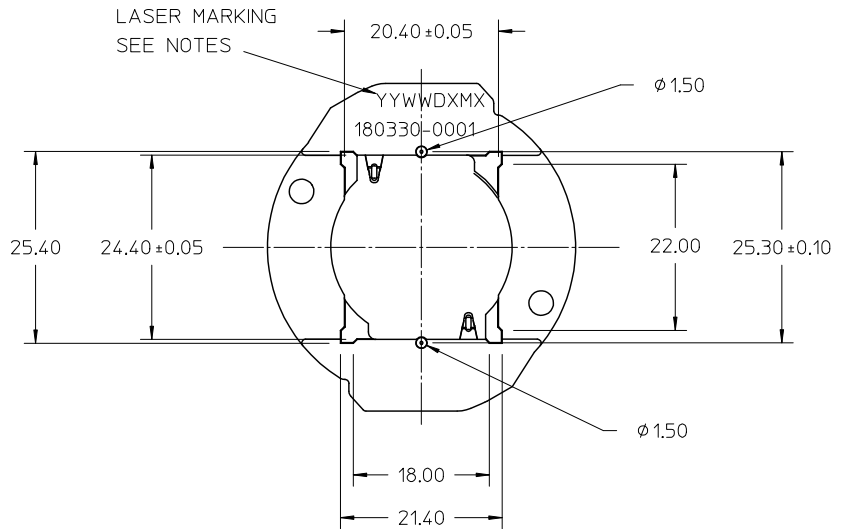
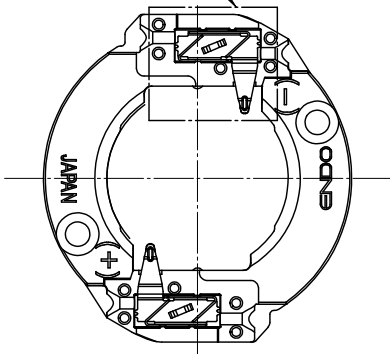
OPENINGS ON WIRE TRAP CAPS
FOR VISUAL CONFIRMATION OF
CONTACT TO LED PAD

- NOTES:
- 1) THIS HOLDER WILL ACCEPT THE SHARP MEGA ZENIGATA LED
 - 2) MATERIALS:
 - a. CAPS: NATURAL COLOR PA66 NYLON 25% GF UL94V-0
 - b. HOUSING: NATURAL COLOR PA66 NYLON 25% GF UL94V-0
 - 3) WIRE TRAP TERMINALS: COPPER ALLOY
 - a. FINISH: GOLD OVER NICKEL
 - 4) THIS PRODUCT IS ELV AND ROHS COMPLIANT
 - 5) APPLICABLE WIRE GAUGE - 18 OR 20 AWG
 - a. SOLID WIRE IS RECOMMENDED
 - b. IF STRANDED WIRE IS USED, PRE-TINNED IS RECOMMENDED
 - c. 1 cm (+/- 1mm) STRIP LENGTH IS RECOMMENDED
 - 6) MOUNT HOLDER USING M3 OR 4-40 SCREWS (2), 0.8 NEWTON METERS MAX TORQUE
 - 7) UL RECOGNITION TO UL496 - PENDING
c-UL RECOGNITION TO CSA-C22.2 NO. 43 (2008) - PENDING
RATED 600V
UL FILE NUMBER: PENDING

ENTER DESCRIPTION EC NO: SSL2013-0018 DRAWN: CARRANZA 2012/08/22 CHKD: CHKD APPR: DMCGOWAN 2012/08/23	QUALITY SYMBOLS ▽=0 ▽=0	GENERAL TOLERANCES (UNLESS SPECIFIED)		DIMENSION STYLE MM ONLY		SCALE 2:1	DESIGN UNITS METRIC	THIRD ANGLE PROJECTION	
				DRAWN BY MDEVITO	DATE 2011/10/27	TITLE SHARP MEGA ZENIGATA-ENDO LED HOLDER			
				CHECKED BY	DATE				
				APPROVED BY DMCGOWAN	DATE 2012/02/07	MOLEX INCORPORATED			
				MATERIAL NO. 1803300000	DOCUMENT NO. SD-180330-001				
				DRAFT WHERE APPLICABLE MUST REMAIN WITHIN DIMENSIONS					
				SIZE B		THIS DRAWING CONTAINS INFORMATION THAT IS PROPRIETARY TO MOLEX INCORPORATED AND SHOULD NOT BE USED WITHOUT WRITTEN PERMISSION			

WIRE TRAP CAPS ARE REMOVED FROM FRONT VIEW FOR CLARITY

SEE DETAIL A



NOTES:

1. PART TO BE LASER MARKED WITH 1.6mm MINIMUM

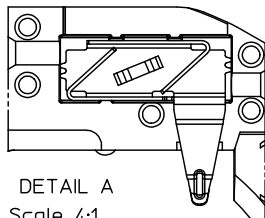
TEXT HEIGHT WITH THE FOLLOWING:

DATE CODE (YYWDX)

MANUFACTURING PLANT (XM)

ASSEMBLY DRAWING REVISION (X)

PART NUMBER

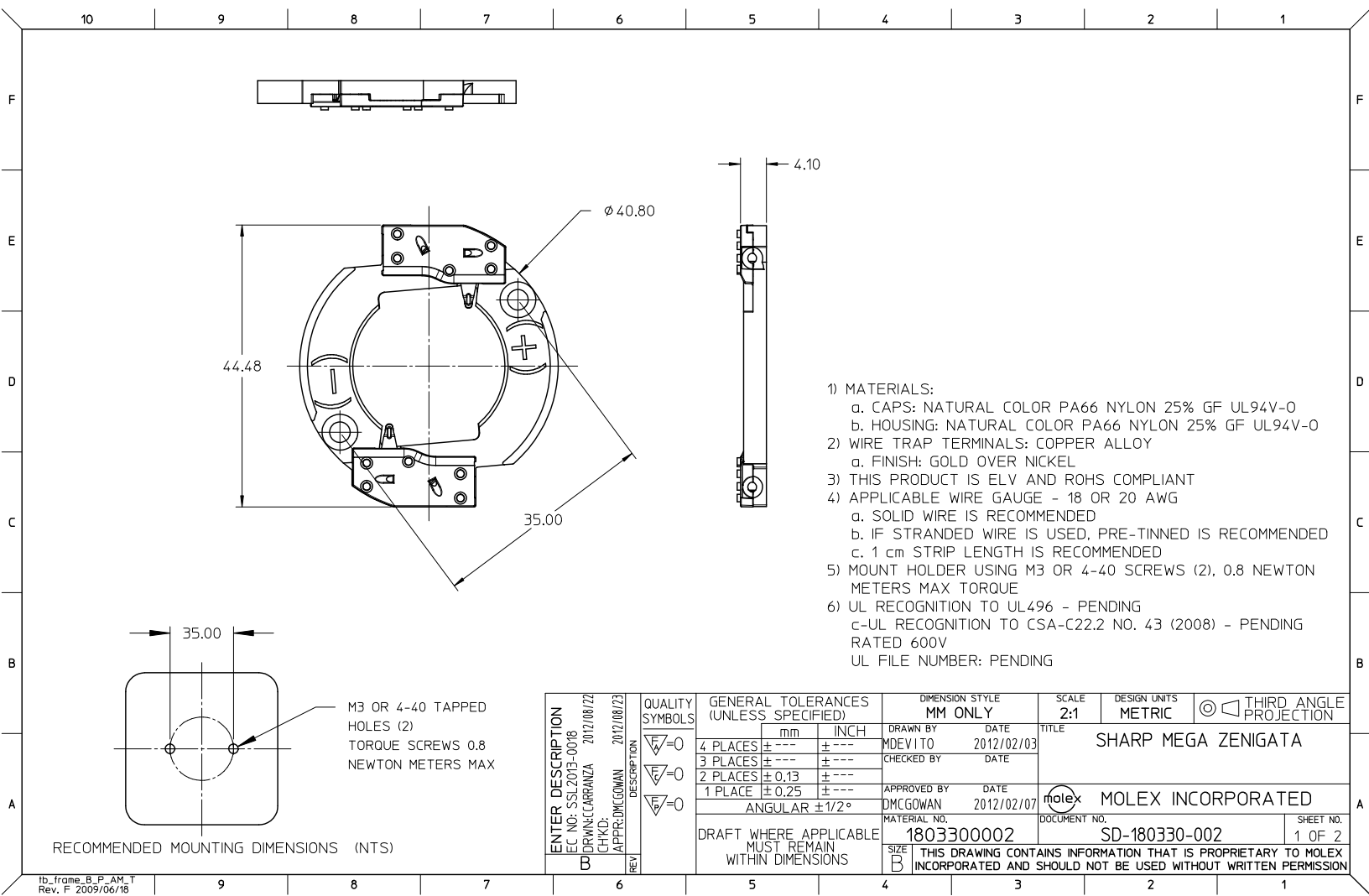


DETAIL A
Scale 4:1

VIEW OF TWO-WAY WIRE TRAP

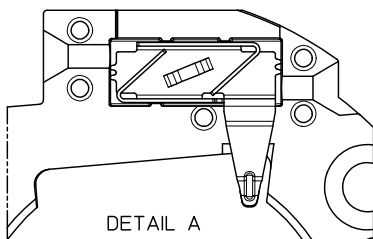
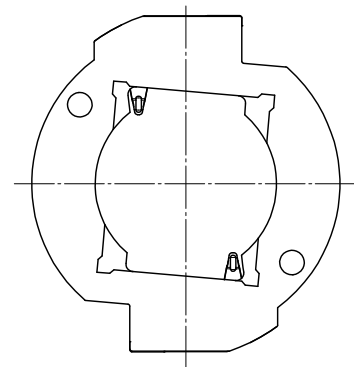
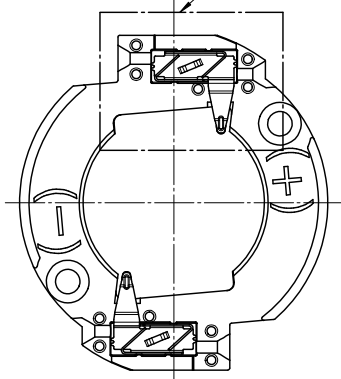
WIRE TRAPS WILL ACCOMODATE
EITHER 18 OR 20 GAUGE WIRE

ENTER DESCRIPTION EC NO: SSL2013-0018 DRAWN: CARRANZA 2017/08/22 CHKD: CHKO APPR: DMCGOWAN 2017/08/23	DESCRIPTION	QUALITY SYMBOLS ▽=0 ▽=0	GENERAL TOLERANCES (UNLESS SPECIFIED)		DIMENSION STYLE MM ONLY		SCALE 2:1	DESIGN UNITS METRIC	THIRD ANGLE PROJECTION
				mm	INCH	DRAWN BY MDEVITO	DATE 2011/10/27	TITLE SHARP MEGA ZENIGATA-ENDO LED HOLDER	
			4 PLACES ± ---	± ---	CHECKED BY	DATE			
			3 PLACES ± ---	± ---	APPROVED BY	DATE			
			2 PLACES ± 0.13	± ---	DMCGOWAN	2012/02/07			
		1 PLACE ± 0.25	± ---	MATERIAL NO. 1803300000		DOCUMENT NO. SD-180330-001		SHEET NO. 2 OF 2	
		ANGULAR ±1/2°		MOLEX INCORPORATED					
DRAFT WHERE APPLICABLE MUST REMAIN WITHIN DIMENSIONS			THIS DRAWING CONTAINS INFORMATION THAT IS PROPRIETARY TO MOLEX INCORPORATED AND SHOULD NOT BE USED WITHOUT WRITTEN PERMISSION						



WIRE TRAP CAPS ARE REMOVED FROM FRONT VIEW FOR CLARITY

SEE DETAIL A

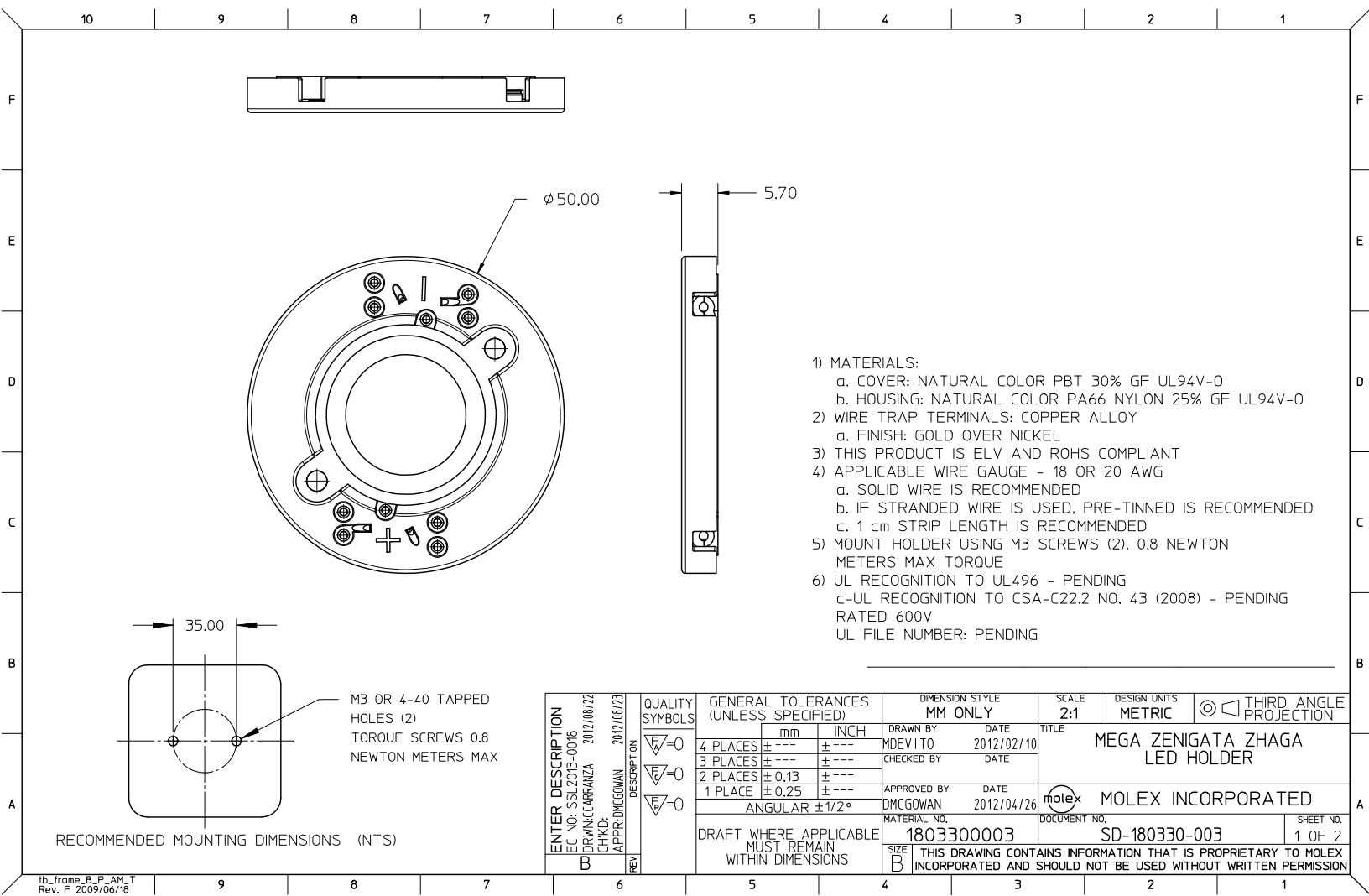


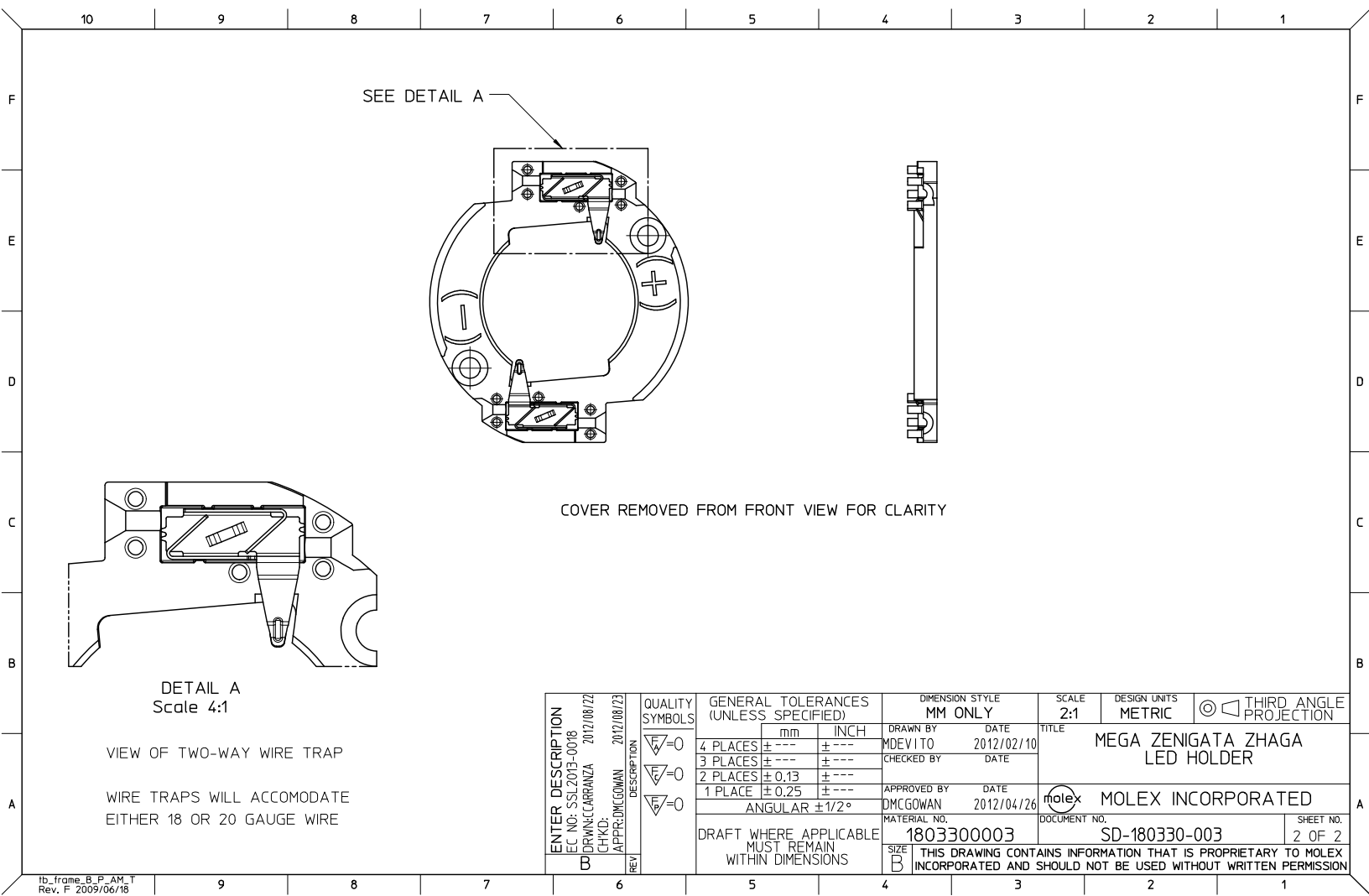
DETAIL A
Scale 4:1


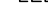
VIEW OF TWO-WAY WIRE TRAP

WIRE TRAPS WILL ACCOMMODATE
EITHER 18 OR 20 GAUGE WIRE

ENTER DESCRIPTION EC NO: SSL2013-0018 DRAWN: CARRANZA CHKD: DMCGOWAN APPR: DMCGOWAN 2012/08/22 2012/08/23	QUALITY SYMBOLS <div>▽=0</div> <div>▽=0</div> <div>▽=0</div>	GENERAL TOLERANCES (UNLESS SPECIFIED)		DIMENSION STYLE		SCALE	DESIGN UNITS	THIRD ANGLE PROJECTION		
				MM ONLY		2:1	METRIC			
		mm		INCH		DRAWN BY	DATE	TITLE SHARP MEGA ZENIGATA		
		4 PLACES ± --- ± ---		MDEVITO		2012/02/03				
		3 PLACES ± --- ± ---		CHECKED BY		DATE				
		2 PLACES ± 0.13 ± ---		APPROVED BY		DATE		MOLEX INCORPORATED		
		1 PLACE ± 0.25 ± ---		DMCGOWAN		2012/02/07				
		ANGULAR ± 1/2°		MATERIAL NO.		DOCUMENT NO.				
		DRAFT WHERE APPLICABLE		1803300002		SD-180330-002		SHEET NO.		
		MUST REMAIN		SIZE B		THIS DRAWING CONTAINS INFORMATION THAT IS PROPRIETARY TO MOLEX INCORPORATED AND SHOULD NOT BE USED WITHOUT WRITTEN PERMISSION			2 OF 2	
WITHIN DIMENSIONS										





ENTER DESCRIPTION EC NO: SSL2013-0018 DRAWN: CARRANZA CHKD: APPR: DMCGOWAN	QUALITY SYMBOLS ▽ _F =0 ▽ _F =0 ▽ _F =0	GENERAL TOLERANCES (UNLESS SPECIFIED)		DIMENSION STYLE		SCALE	DESIGN UNITS	 THIRD ANGLE PROJECTION
				MM ONLY		2:1	METRIC	
				DRAWN BY	DATE	TITLE MEGA ZENIGATA ZHAGA LED HOLDER		
				MDEVITO	2012/02/10			
				CHECKED BY	DATE			
REV B	DESCRIPTION	4 PLACES ± --- ± ---		APPROVED BY		DATE	 MOLEX INCORPORATED	SHEET NO. 2 OF 2
		3 PLACES ± --- ± ---		DMCGOWAN		2012/04/26		
		2 PLACES ± 0.13 ± ---		MATERIAL NO.		DOCUMENT NO.		
		1 PLACE ± 0.25 ± ---		1803300003		SD-180330-003		
		ANGULAR ± 1/2°		SIZE B		THIS DRAWING CONTAINS INFORMATION THAT IS PROPRIETARY TO MOLEX INCORPORATED AND SHOULD NOT BE USED WITHOUT WRITTEN PERMISSION		
		DRAFT WHERE APPLICABLE MUST REMAIN WITHIN DIMENSIONS						