

DC Fan Motors

**SAN ACE** □ **52mm**  
**MICRO ACE**

Best suited for reliable, compact precision equipment

**General specifications**

Motor protection system ··· Current cut system (with reverse-connection protection)

Dielectric strength ······ 50/60 Hz, 500 VAC, 1 minute  
(between lead conductor and frame)

Operating thermally range -10°C to +60°C (non-condensing)

Fan power lead ········ A and H speeds, ⊕ red, ⊖ black  
M speed, ⊕ red, ⊖ blue

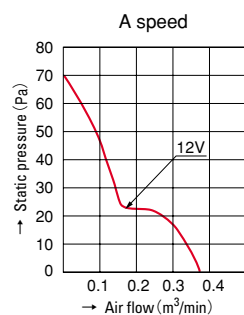


**15mm** thick

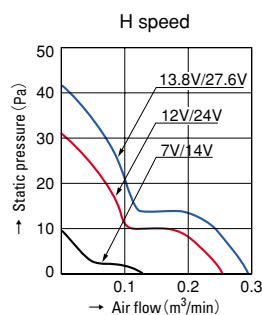
**Specifications**

Model No	Rated voltage (V)	Operating voltage range (V)	Rated current (A)	Rated input (W)	Rated rotating speed (min <sup>-1</sup> )	Air flow (m <sup>3</sup> /min) (CFM)	Static pressure (Pa)	Noise (dB[A])	Mass (g)
<b>109P0505M702</b>	5	4.5~5.5	0.15	0.75	3,700	0.205 7.24	21.4	22	55
<b>109P0512A702</b>	12	10.2~13.8	0.21	2.52	6,800	0.375 13.25	69.7	36	
<b>109P0512H702</b>		7~13.8	0.10	1.20	4,600	0.255 9.00	31.9	27	
<b>109P0512M702</b>	24	14~27.6	0.05	1.20	4,600	0.255 9.00	31.9	27	
<b>109P0524H702</b>			0.04	0.96	3,700	0.205 7.24	21.4	22	
<b>109P0524M702</b>									

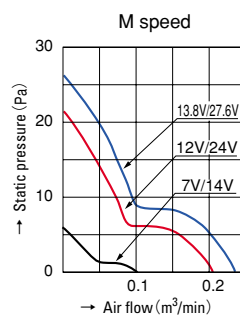
**Typical air flow and static pressure characteristics**



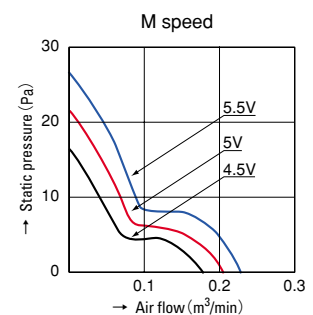
109P0512A702



109P0512H702  
109P0524H702

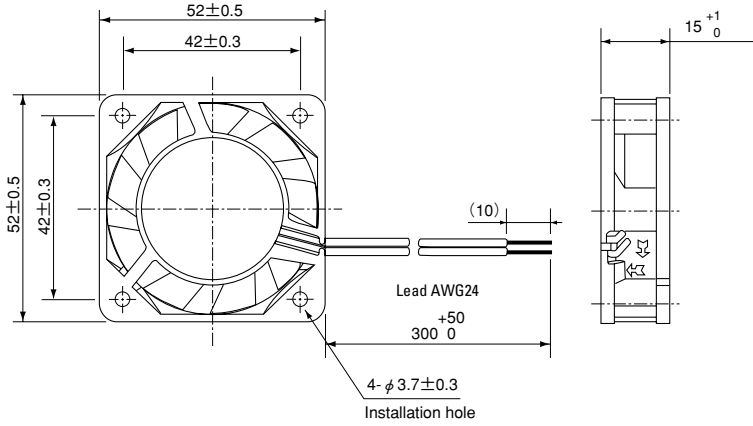


109P0512M702  
109P0524M702



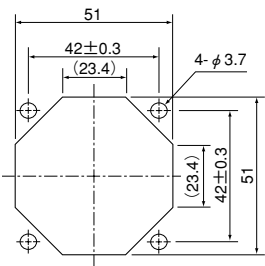
109P0505M702

**Dimensions (unit : mm)**



**Reference dimensional diagram for installation holes (unit : mm)**

Discharge sides • Suction sides



52mm

**SANYO DENKI**

1-15-1, Kita-otsuka, Toshima-ku, Tokyo 170-8451, Japan. PHONE : +81 3 3917 5151  
Home Page: <http://www.sanyodenki.co.jp>