

Single Card Socket

101-00234-**

SD Conn., Manual , Short body

Push in-Pull out Type

MATERIAL

HSG : HIGH TEMPERATURE THERMOPLASTIC
 CONTACT : COPPER ALLOY
 SHELL : COPPER ALLOY

RATING

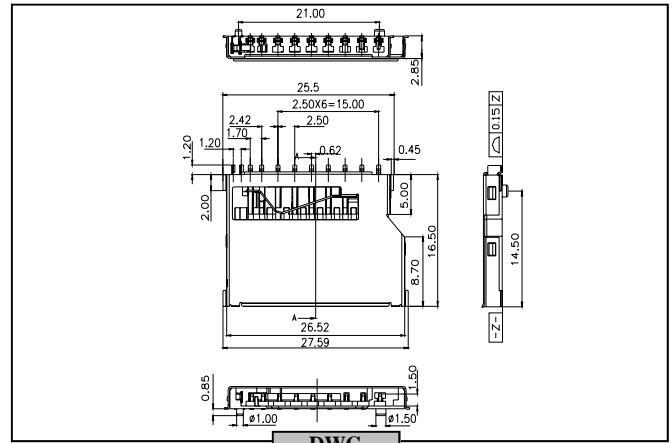
CURRENT RATING : 1 Amp.
 RATED VOLTAGE : 100 VAC

ELECTRICAL

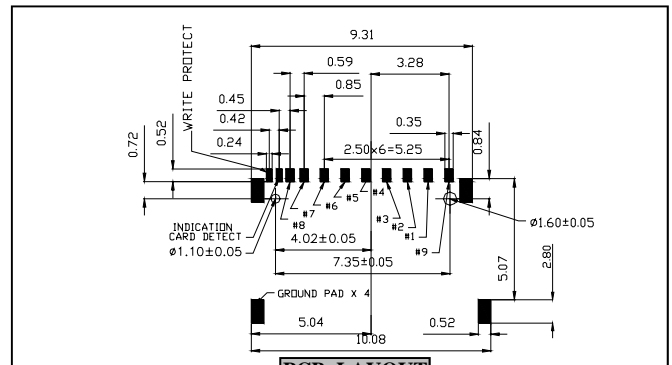
CONTACT RESISTANCE : 100 mΩ Max.
 INSULATION RESISTANCE : 1000 MΩ Max.
 DIELECTRIC WITHSTANDING VOLTAGE : 500 VAC/RMS

OPERATING TEMPERATURE

-20°C ~ +60°C



DWG



PCB LAYOUT

101-00042-**

MS Conn, Reverse Type

Push in-Pull out



MATERIAL

HSG : HIGH TEMPERATURE THERMOPLASTIC
 CONTACT : COPPER ALLOY
 SHELL : COPPER ALLOY

RATING

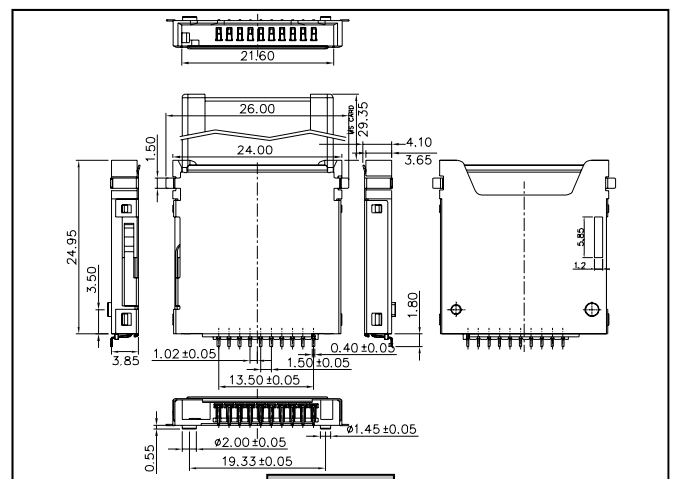
CURRENT RATING : 1 Amp.
 RATED VOLTAGE : 100 V AC

ELECTRICAL

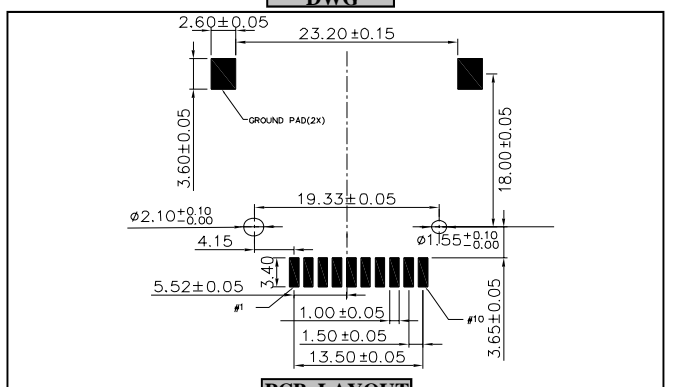
CONTACT RESISTANCE : 100 mΩ Max.
 INSULATION RESISTANCE : 1000 MΩ Max.
 DIELECTRIC WITHSTANDING VOLTAGE : 500 VAC/RMS

OPERATING TEMPERATURE

-20°C ~ +60°C



DWG



PCB LAYOUT

Single Card Socket

101-00002-**

SIM+ XD Conn P-P Combo Connector

SIM : Push in -Pull out
XD: Push in - Push out



MATERIAL

HSG : HIGH TEMPERATURE THERMOPLASTIC
CONTACT : COPPER ALLOY
SHELL : COPPER ALLOY

RATING

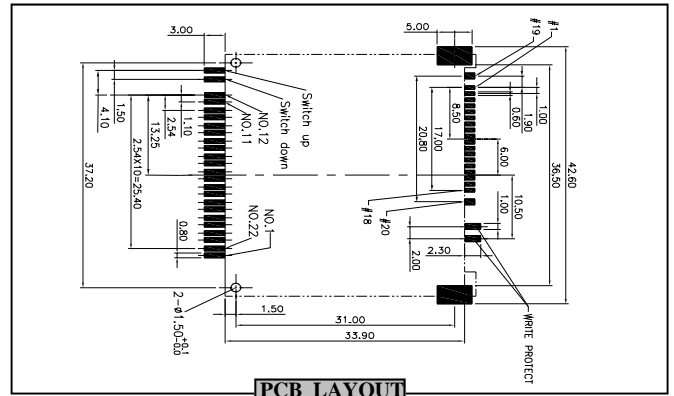
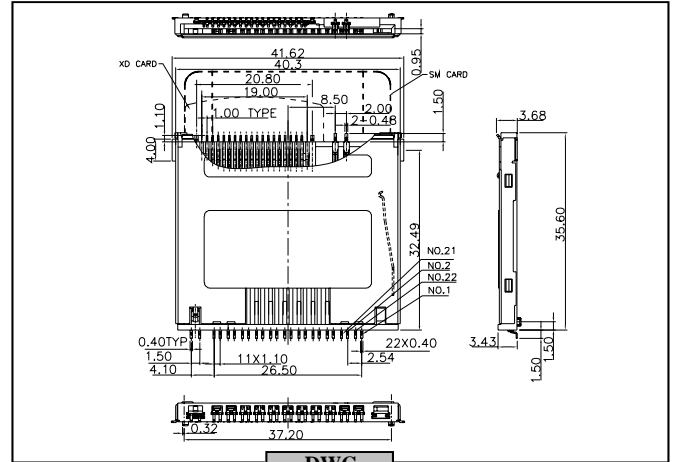
CURRENT RATING : 1 Amp
RATED VOLTAGE : 100 VAC

ELECTRICAL

CONTACT RESISTANCE : 40 mΩ Max.
INSULATION RESISTANCE : 1000 MΩ Max.
DIELECTRIC WITHSTANDING VOLTAGE : 250 VAC/RMS

OPERATING TEMPERATURE

-20°C ~ + 65°C



101-00158-**

XD Connector, Manual Type

Push in -Pull out



MATERIAL

HSG : HIGH TEMPERATURE THERMOPLASTIC
CONTACT : COPPER ALLOY
SHELL : COPPER ALLOY

RATING

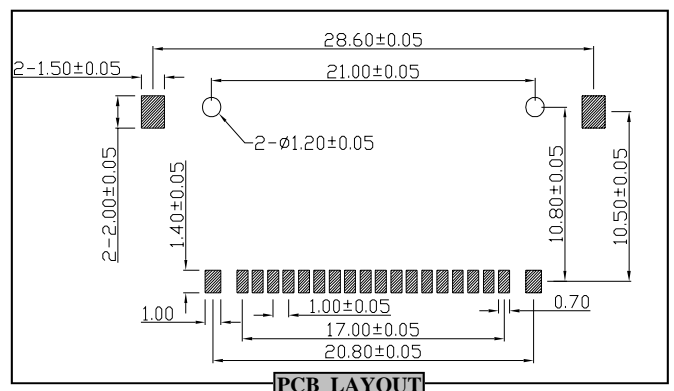
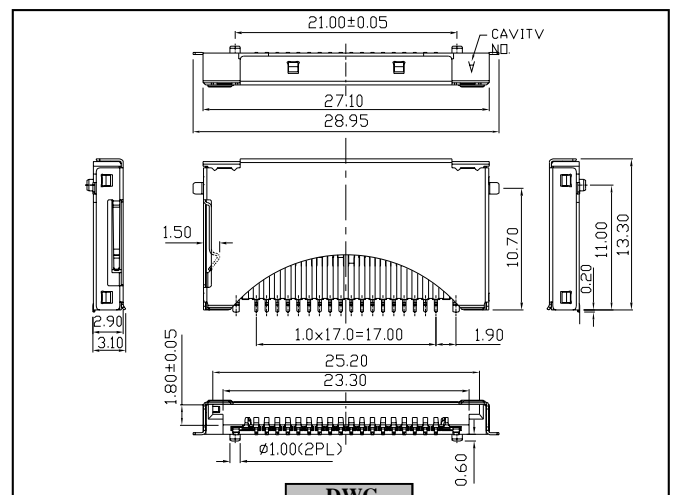
CURRENT RATING : 1 Amp
RATED VOLTAGE : 100 VAC

ELECTRICAL

CONTACT RESISTANCE : 40 mΩ Max.
INSULATION RESISTANCE : 1000 MΩ Max.
DIELECTRIC WITHSTANDING VOLTAGE : 250 VAC/RMS

OPERATING TEMPERATURE

-20°C ~ + 65°C



Single Card Socket

101-00205-**

CF Conn., Standard Stand-off = 1.4mm

Reverse Type



MATERIAL

HSG : HIGH TEMPERATURE THERMOPLASTIC
 CONTACT : COPPER ALLOY
 SHELL : COPPER ALLOY

RATING

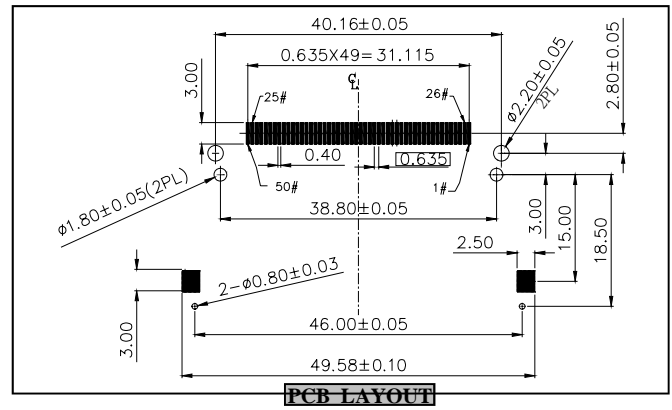
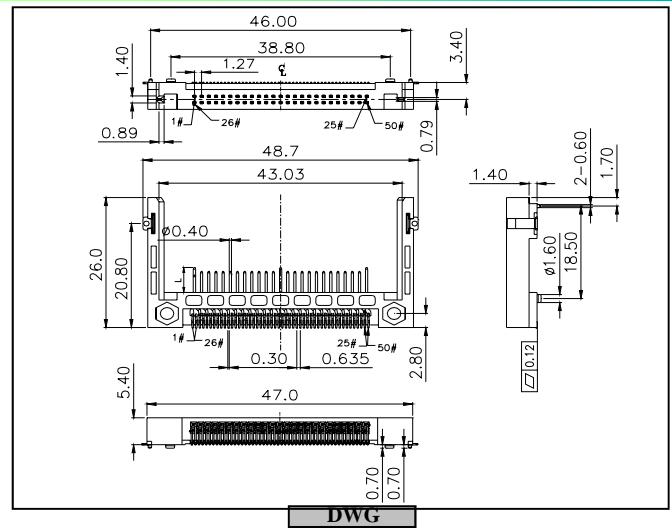
CURRENT RATING : 1 A mp
 RATED VOLTAGE : 100 VAC

ELECTRICAL

CONTACT RESISTANCE : 100 mΩ Max.
 INSULATION RESISTANCE : 1000 MΩ Max.
 DIELECTRIC WITHSTANDING VOLTAGE : 500 VAC/RMS

OPERATING TEMPERATURE

-20°C ~ +60°C



101-00178-**

CF Conn., Ultra short

Normal Type



MATERIAL

HSG : HIGH TEMPERATURE THERMOPLASTIC
 CONTACT : COPPER ALLOY
 SHELL : COPPER ALLOY

RATING

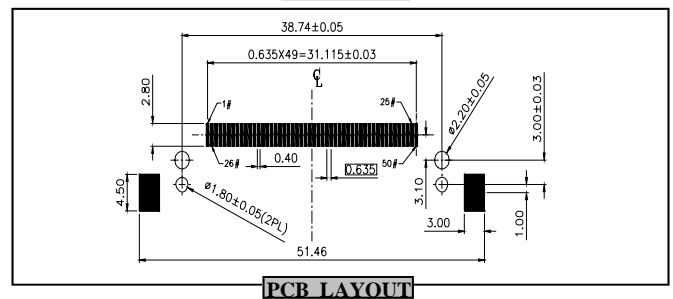
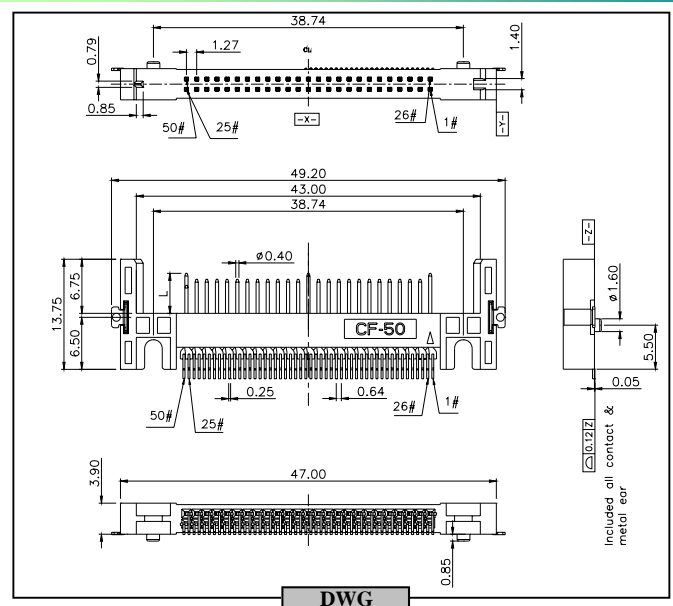
CURRENT RATING : 1 Amp
 RATED VOLTAGE : 100 VAC

ELECTRICAL

CONTACT RESISTANCE : 100 mΩ Max.
 INSULATION RESISTANCE : 1000 MΩ Max.
 DIELECTRIC WITHSTANDING VOLTAGE : 500 VAC/RMS

OPERATING TEMPERATURE

-20°C ~ +60°C



Single Card Socket

101-00140-**

CF, W/Shell, Stand-off=1.4mm

Reverse Type



MATERIAL

- HSG : HIGH TEMPERATURE THERMOPLASTIC
- CONTACT : COPPER ALLOY
- SHELL : COPPER ALLOY

RATING

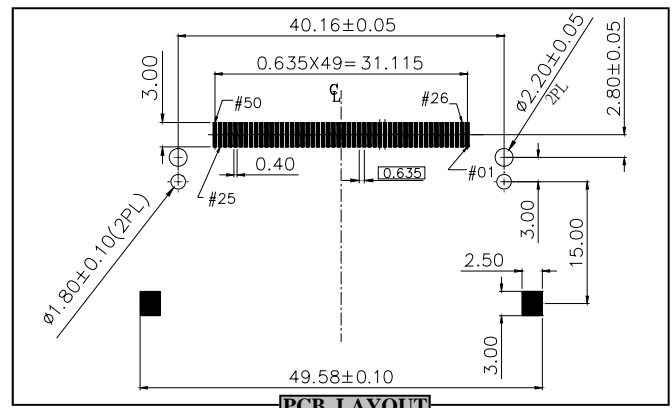
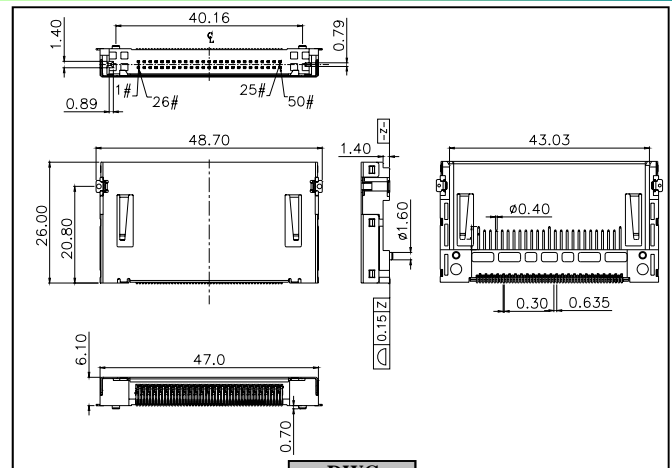
- CURRENT RATING : 1 A AC/DC Max
- RATED VOLTAGE : 100 VAC

ELECTRICAL

- CONTACT RESISTANCE : 40 mΩ Max.
- INSULATION RESISTANCE : 1000 MΩ Max.
- DIELECTRIC WITHSTANDING VOLTAGE : 500 VAC/RMS

OPERATING TEMPERATURE

-20°C ~ +60°C



101-00265-**

CF, W/Shell

Reverse Type



MATERIAL

- HSG : HIGH TEMPERATURE THERMOPLASTIC
- CONTACT : COPPER ALLOY
- SHELL : COPPER ALLOY

RATING

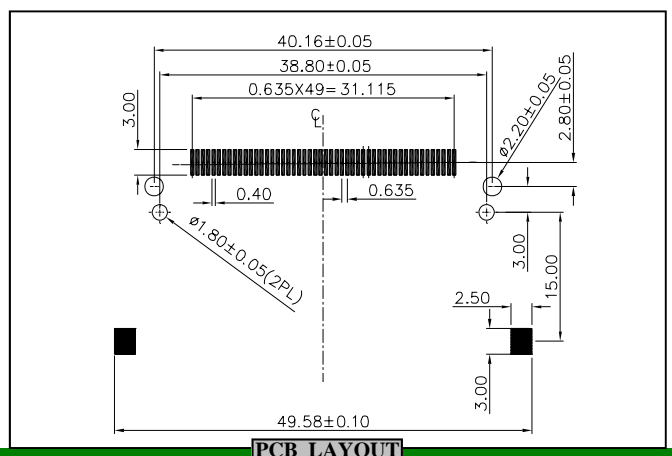
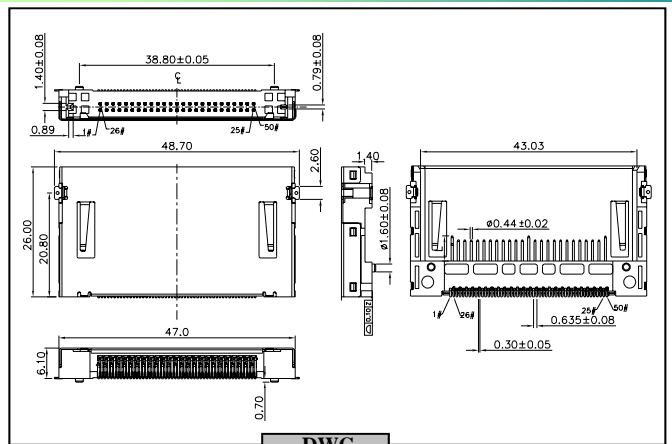
- CURRENT RATING : 1 A AC/DC Max
- RATED VOLTAGE : 100 VAC

ELECTRICAL

- CONTACT RESISTANCE : 40 mΩ Max.
- INSULATION RESISTANCE : 1000 MΩ Max.
- DIELECTRIC WITHSTANDING VOLTAGE : 500 VAC/RMS

OPERATING TEMPERATURE

-20°C ~ +60°C



Combo Card Socket

101-00413-**

4-in-1 Combo, Reverse, PCB Type



MATERIAL

HSG : HIGH TEMPERATURE THERMOPLASTIC
 CONTACT : COPPER ALLOY
 SHELL : COPPER ALLOY

RATING

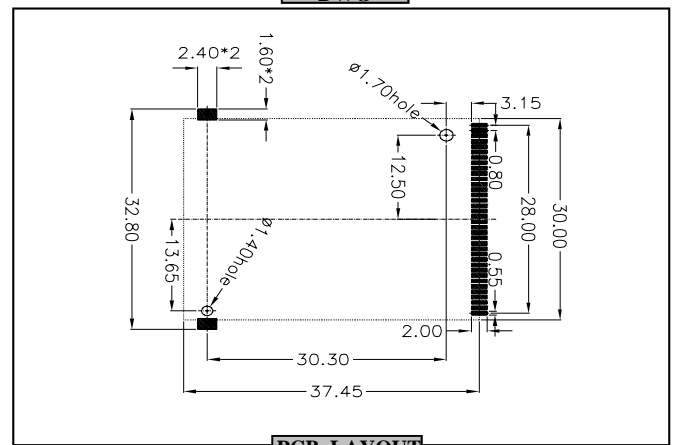
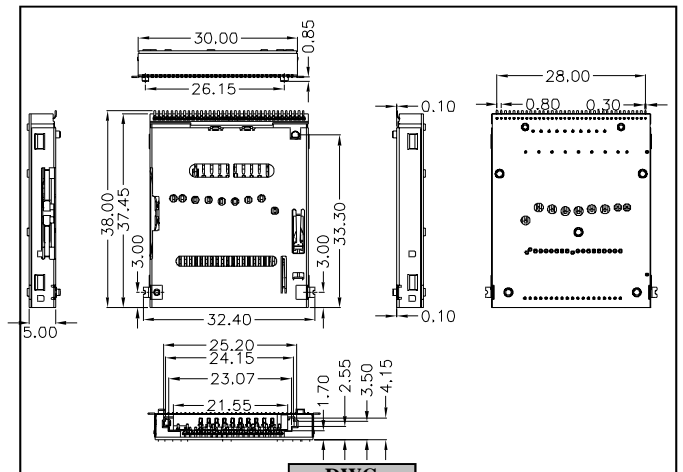
CURRENT RATING : 0.5 A mp
 RATED VOLTAGE : 250 VAC

ELECTRICAL

CONTACT RESISTANCE : 100 mΩ Max.
 INSULATION RESISTANCE : 1000 MΩ Max.
 DIELECTRIC WITHSTANDING VOLTAGE : 500 VAC/RMS

OPERATING TEMPERATURE

-20°C ~ + 60°C



101-00414-** / 101-00415-**

4-in-1 Combo, Top mount, PCB Type



MATERIAL

HSG : HIGH TEMPERATURE THERMOPLASTIC
 CONTACT : COPPER ALLOY
 SHELL : COPPER ALLOY

RATING

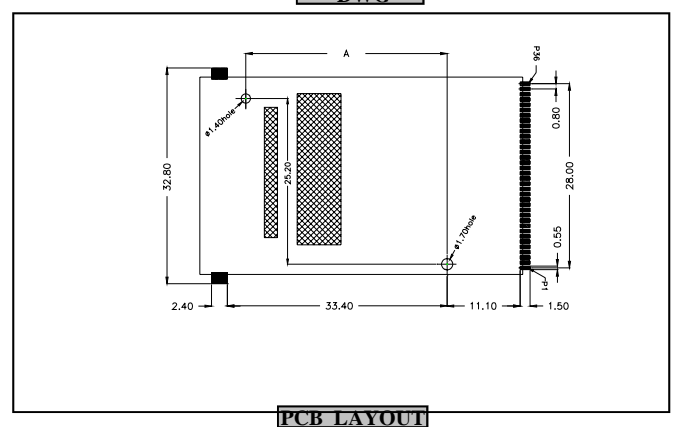
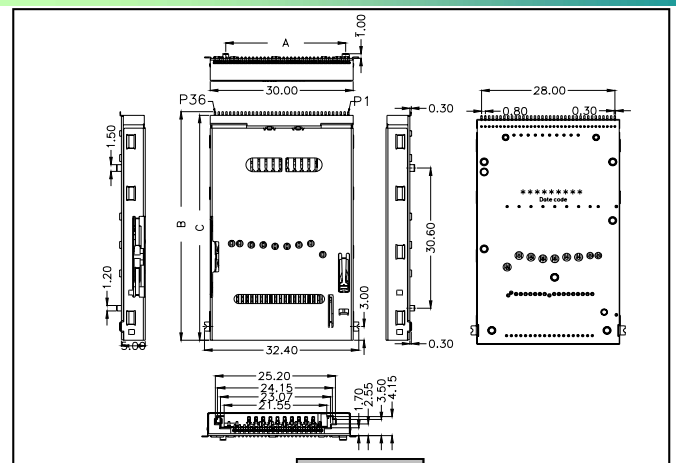
CURRENT RATING : 0.5 A mp
 RATED VOLTAGE : 250 VAC

ELECTRICAL

CONTACT RESISTANCE : 100 mΩ Max.
 INSULATION RESISTANCE : 1000 MΩ Max.
 DIELECTRIC WITHSTANDING VOLTAGE : 500 VAC/RMS

OPERATING TEMPERATURE

-20°C ~ + 60°C



Push in- Push out

Combo Card Socket

101-00396-**

SD 6-in-1 Combo, Reverse Type

Push in-Pull out

MATERIAL

HSG : HIGH TEMPERATURE THERMOPLASTIC
CONTACT : COPPER ALLOY
SHELL : COPPER ALLOY

RATING

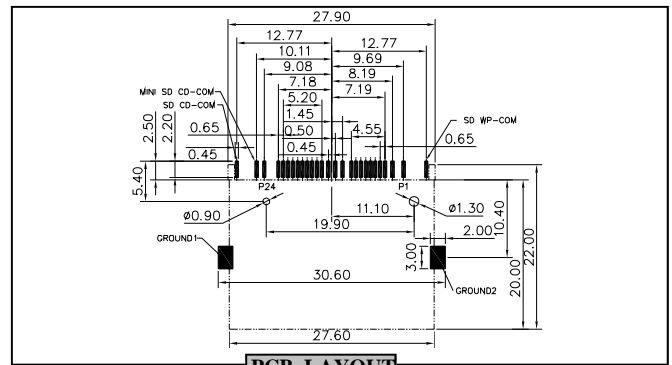
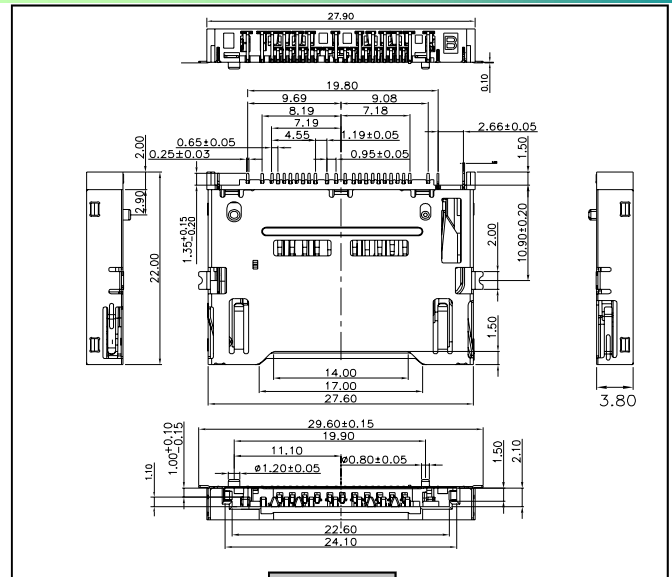
CURRENT RATING : 0.5 Amp
RATED VOLTAGE : 250 VAC

ELECTRICAL

CONTACT RESISTANCE : 100 mΩ Max.
INSULATION RESISTANCE : 1000 MΩ Max.
DIELECTRIC WITHSTANDING VOLTAGE : 500 VAC/RMS

OPERATING TEMPERATURE

-20°C ~ + 60°C



101-00395-**

SD 6-in-1 Combo, Top mount Type

Push in-Pull out



MATERIAL

HSG : HIGH TEMPERATURE THERMOPLASTIC
CONTACT : COPPER ALLOY
SHELL : COPPER ALLOY

RATING

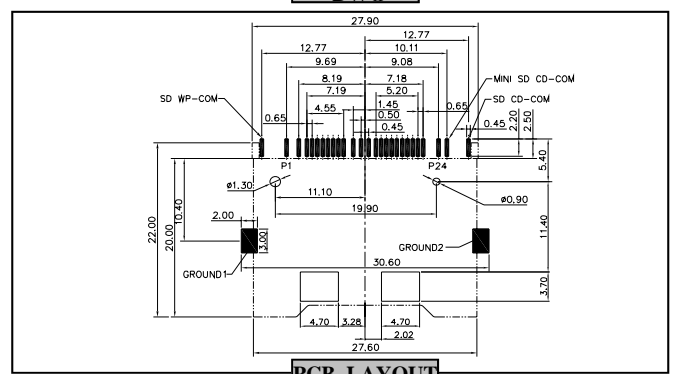
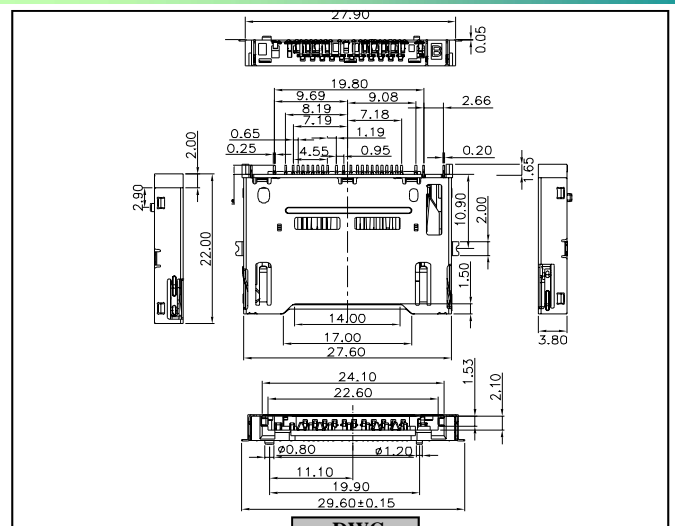
CURRENT RATING : 0.5 Amp
RATED VOLTAGE : 250 VAC

ELECTRICAL

CONTACT RESISTANCE : 100 mΩ Max.
INSULATION RESISTANCE : 1000 MΩ Max.
DIELECTRIC WITHSTANDING VOLTAGE : 500 VAC/RMS

OPERATING TEMPERATURE

-20°C ~ + 60°C

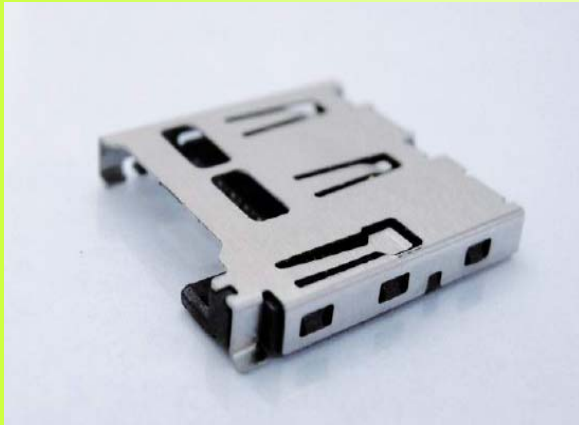


Miniature Card Socket

101-00139-**

Micro SD P-P, W/O C/D Function Conn.

Push in- Push out



MATERIAL

HSG : HIGH TEMPERATURE THERMOPLASTIC
 CONTACT : COPPER ALLOY
 SHELL : STAINLESS STEEL

RATING

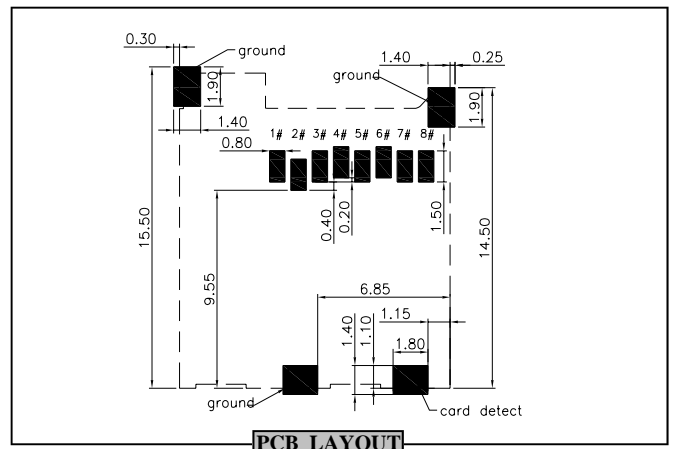
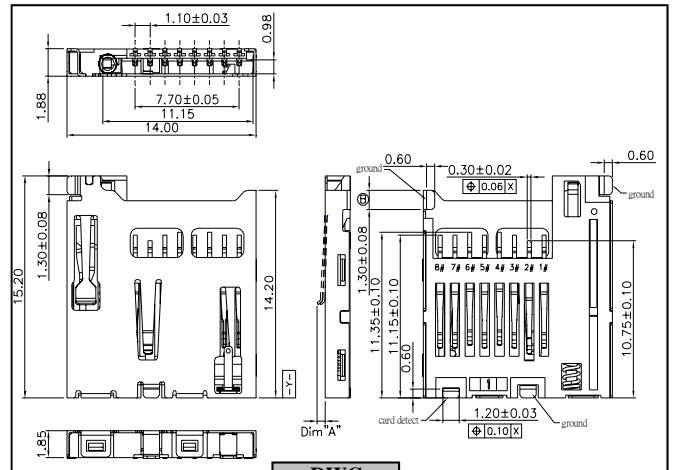
CURRENT RATING : 0.5 Amp
 RATED VOLTAGE : 250 VAC

ELECTRICAL

CONTACT RESISTANCE : 100 mΩ Max.
 INSULATION RESISTANCE : 1000 MΩ Max.
 DIELECTRIC WITHSTANDING VOLTAGE : 500 VAC/RMS

OPERATING TEMPERATURE

-25°C ~ + 85°C



101-00236-**

Micro-SD P/P CARD Conn.

Push in- Push out



MATERIAL

HSG : HIGH TEMPERATURE THERMOPLASTIC
 CONTACT : COPPER ALLOY
 SHELL : STAINLESS STEEL

RATING

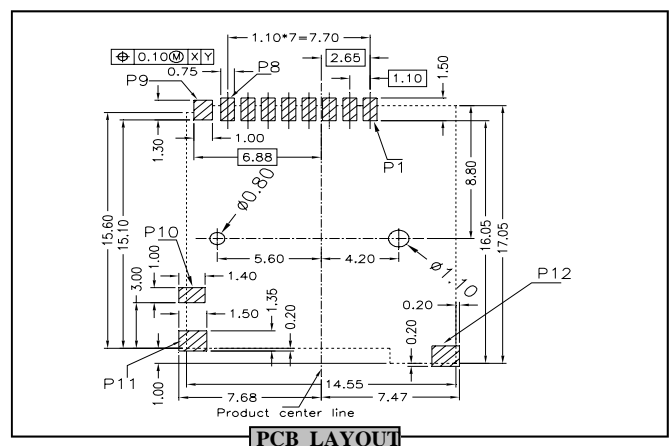
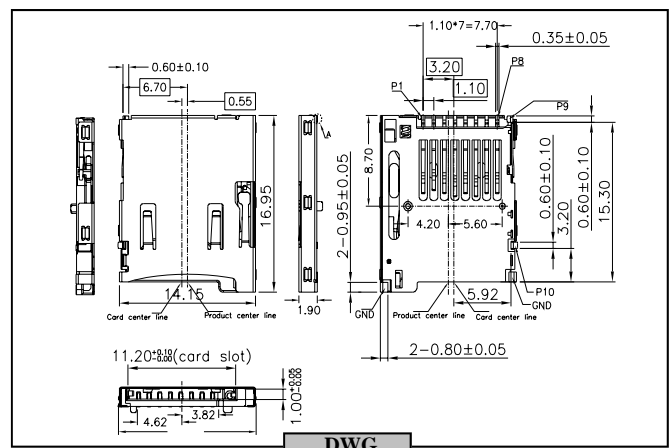
CURRENT RATING : 0.5 Amp
 RATED VOLTAGE : 250 VAC

ELECTRICAL

CONTACT RESISTANCE : 100 mΩ Max.
 INSULATION RESISTANCE : 1000 MΩ Max.
 DIELECTRIC WITHSTANDING VOLTAGE : 500 VAC/RMS

OPERATING TEMPERATURE

-25°C ~ + 85°C



Miniature Card Socket

101-00349-**

Micro SD P/P, Normal Close

Push in- Push out



MATERIAL

HSG : HIGH TEMPERATURE THERMOPLASTIC
CONTACT : COPPER ALLOY
SHELL : COPPER ALLOY

RATING

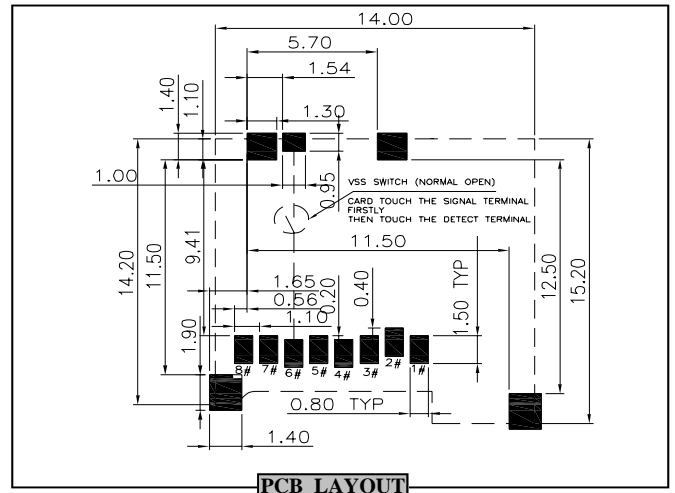
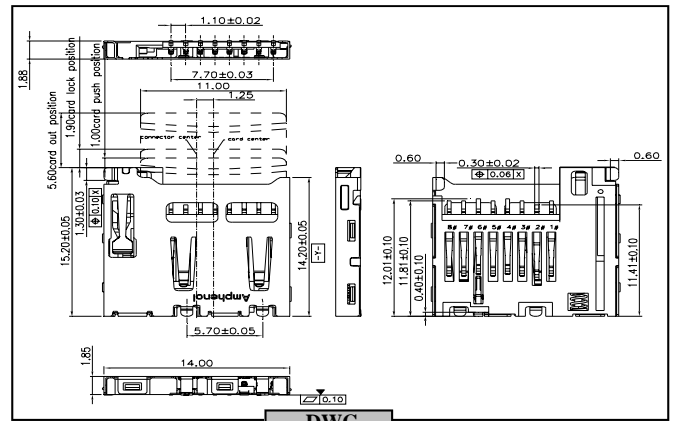
CURRENT RATING : 0.5 Amp
RATED VOLTAGE : 100 VAC

ELECTRICAL

CONTACT RESISTANCE : 100 mΩ Max.
INSULATION RESISTANCE : 1000 MΩ Max.
DIELECTRIC WITHSTANDING VOLTAGE : 500 VAC/RMS

OPERATING TEMPERATURE

-25°C ~ +85°C



101-00112-**

Micro SD P-P, Hinge Type Conn. (8 pin)

Push in- Push out



MATERIAL

HSG : HIGH TEMPERATURE THERMOPLASTIC
CONTACT : COPPER ALLOY
SHELL : COPPER ALLOY

RATING

CURRENT RATING : 0.5 Amp
RATED VOLTAGE : 100 VAC

ELECTRICAL

CONTACT RESISTANCE : 100 mΩ Max.
INSULATION RESISTANCE : 1000 MΩ Max.
DIELECTRIC WITHSTANDING VOLTAGE : 500 VAC/RMS

OPERATING TEMPERATURE

-25°C ~ +85°C

Miniature Card Socket

101-00294-**

SIM + micro-SD P-P Combo



MATERIAL

HSG : HIGH TEMPERATURE THERMOPLASTIC
CONTACT : COPPER ALLOY
SHELL : COPPER ALLOY

RATING

CURRENT RATING : 0.5 A AC/DC Max
RATED VOLTAGE : 100 VAC

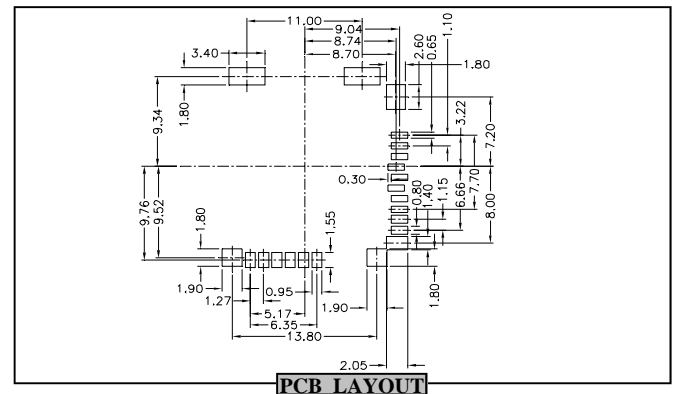
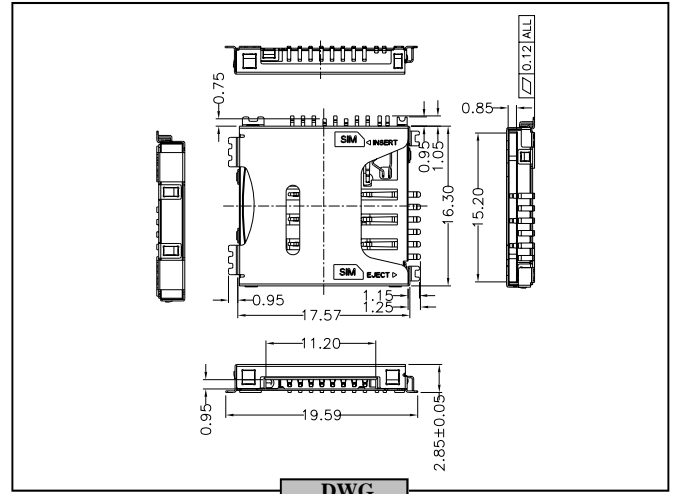
ELECTRICAL

CONTACT RESISTANCE : 100 mΩ Max.
INSULATION RESISTANCE : 1000 MΩ Max.
DIELECTRIC WITHSTANDING VOLTAGE : 500 VAC/RMS

OPERATING TEMPERATURE

-25°C ~ +85°C

SIM : Push in - Pull out microSD: Push in - Push out



101-00318-**

SIM + micro-SD P-P Combo



MATERIAL

HSG : HIGH TEMPERATURE THERMOPLASTIC
CONTACT : COPPER ALLOY
SHELL : COPPER ALLOY

RATING

CURRENT RATING : 0.5 A AC/DC Max
RATED VOLTAGE : 100 VAC

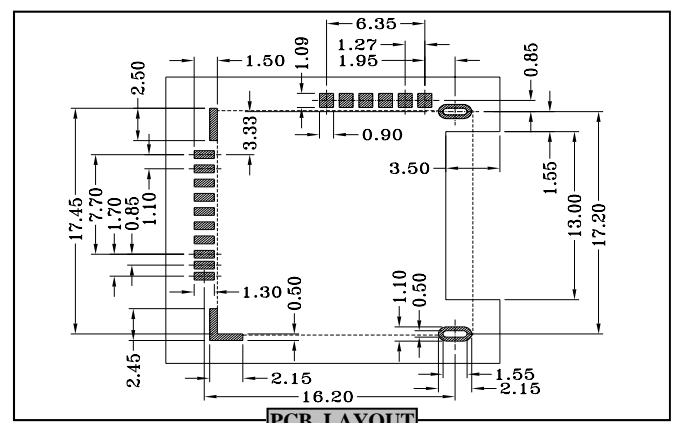
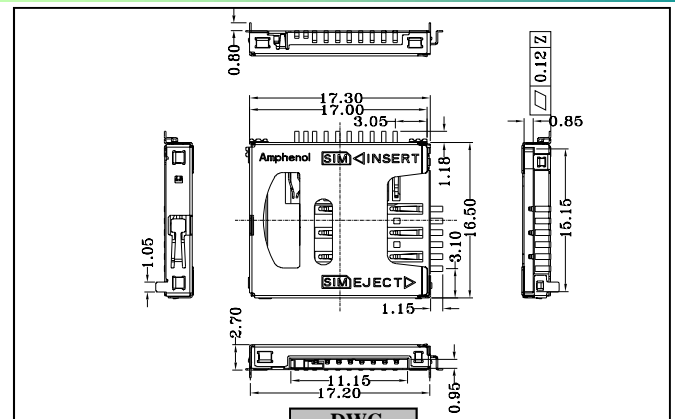
ELECTRICAL

CONTACT RESISTANCE : 100 mΩ Max.
INSULATION RESISTANCE : 1000 MΩ Max.
DIELECTRIC WITHSTANDING VOLTAGE : 500 VAC/RMS

OPERATING TEMPERATURE

-25°C ~ +85°C

SIM : Push in - Pull out microSD: Push in - Push out



Miniature Card Socket

101-00272-**

Mega SIM Socket, Reverse Type



MATERIAL

HSG : HIGH TEMPERATURE THERMOPLASTIC
CONTACT : COPPER ALLOY
SHELL : STAINLESS STEEL

RATING

CURRENT RATING : 0.5 A AC/DC Max
RATED VOLT- 5.0 vrms

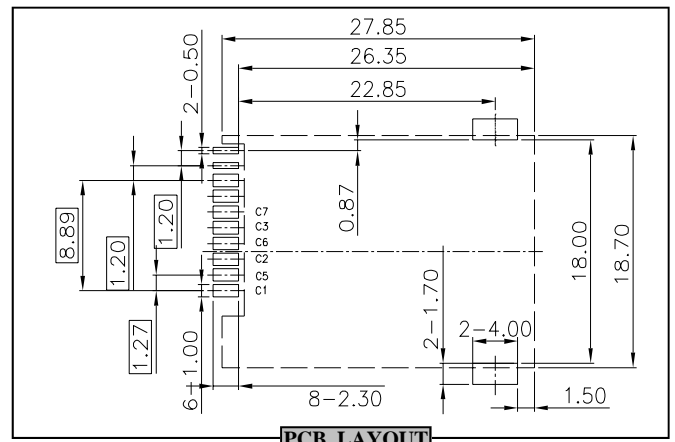
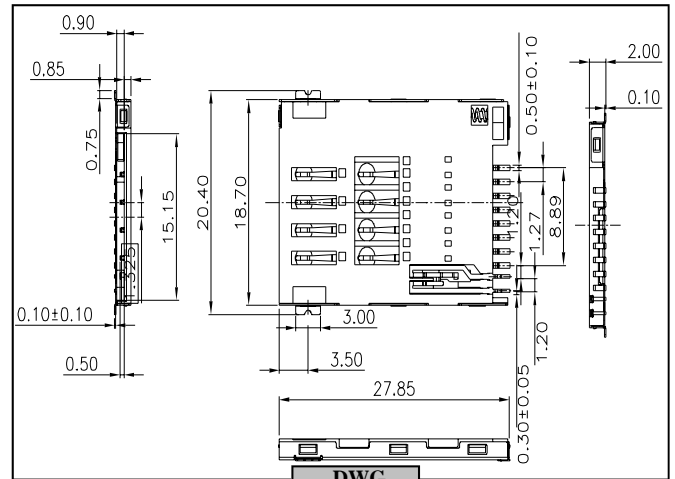
ELECTRICAL

CONTACT RESISTANCE : 100 mΩ Max.
INSULATION RESISTANCE : 1000 MΩ Max.
DIELECTRIC WITHSTANDING VOLTAGE : 250 VAC/RMS

OPERATING TEMPERATURE

-55°C ~ + 85°C

Push in-Pull out



101-00306-**

SIM Socket, Normal Type, W/ Switch (6 pin)



MATERIAL

HSG : HIGH TEMPERATURE THERMOPLASTIC
CONTACT : COPPER ALLOY
SHELL : STAINLESS STEEL

RATING

CURRENT RATING : 0.5 A AC/DC Max
RATED VOLT- 5.0 vrms
AGE : 250 VAC

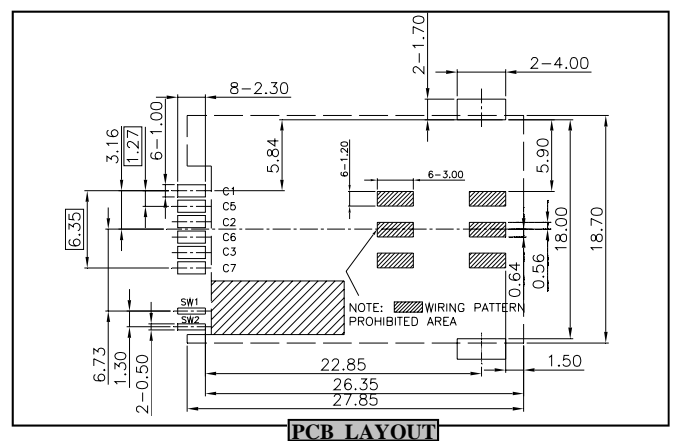
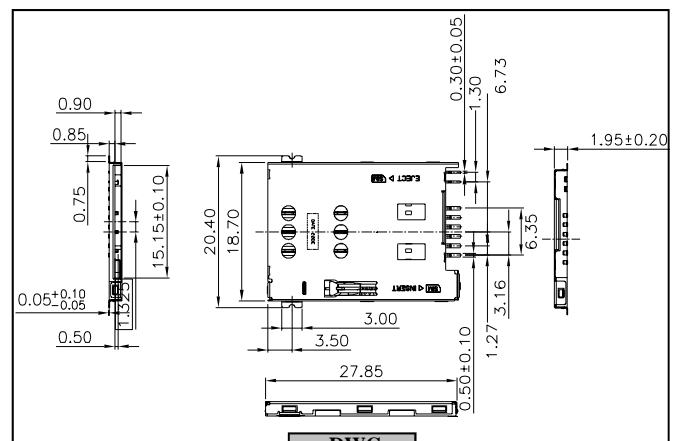
ELECTRICAL

CONTACT RESISTANCE : 100 mΩ Max.
INSULATION RESISTANCE : 1000 MΩ Max.
DIELECTRIC WITHSTANDING VOLTAGE : 250 VAC/RMS

OPERATING TEMPERATURE

-55°C ~ + 85°C

Push in-Push out



Miniature Card Socket

101-00365-**

SIM Socket, Reverse Type



MATERIAL

HSG : HIGH TEMPERATURE THERMOPLASTIC
 CONTACT : COPPER ALLOY
 SHELL : STAINLESS STEEL

RATING

CURRENT RATING : 0.5 A AC/DC Max
 RATED VOLT-AGE : 250 VAC 5.0 vrms

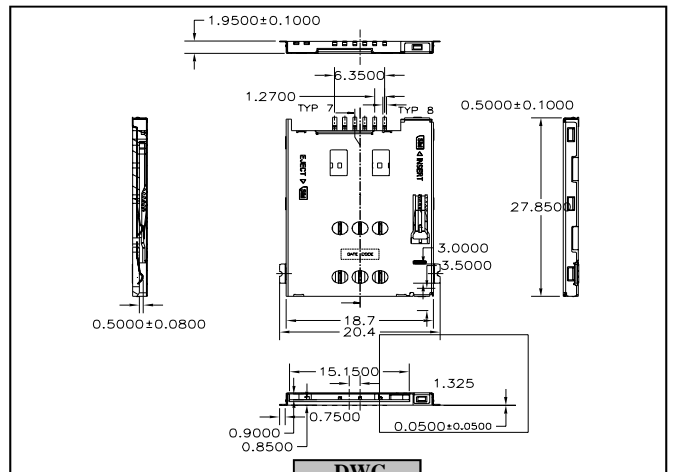
ELECTRICAL

CONTACT RESISTANCE : 100 mΩ Max.
 INSULATION RESISTANCE : 1000 MΩ Max.
 DIELECTRIC WITHSTANDING VOLTAGE : 250 VAC/RMS

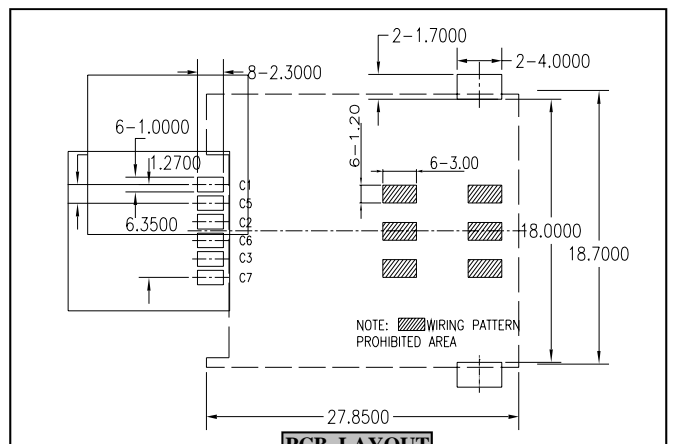
OPERATING TEMPERATURE

-55°C ~ +85°C

Push in-Push out



DWG



PCB LAYOUT

101-00586-**

SIM Socket, Normal Type(H=2.4mm)



MATERIAL

HSG : HIGH TEMPERATURE THERMOPLASTIC
 CONTACT : COPPER ALLOY
 SHELL : STAINLESS STEEL

RATING

CURRENT RATING : 0.5 A AC/DC Max
 RATED VOLT-AGE : 250 VAC 5.0 vrms

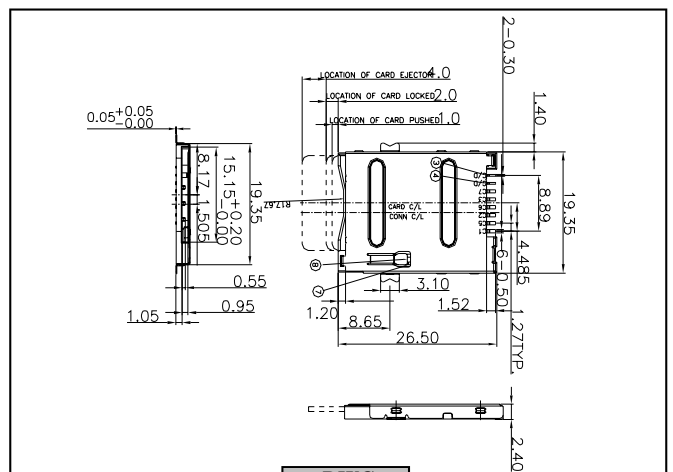
ELECTRICAL

CONTACT RESISTANCE : 100 mΩ Max.
 INSULATION RESISTANCE : 1000 MΩ Max.
 DIELECTRIC WITHSTANDING VOLTAGE : 250 VAC/RMS

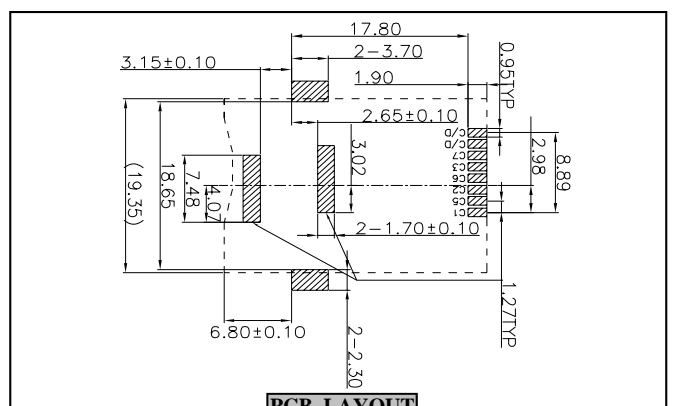
OPERATING TEMPERATURE

-55°C ~ +85°C

Push in-Push out



DWG



PCB LAYOUT

Adapter Socket

106-00069-**

Mini-SD to SD Adapter



MATERIAL

HSG : HIGH TEMPERATURE THERMOPLASTIC
CONTACT : COPPER ALLOY

RATING

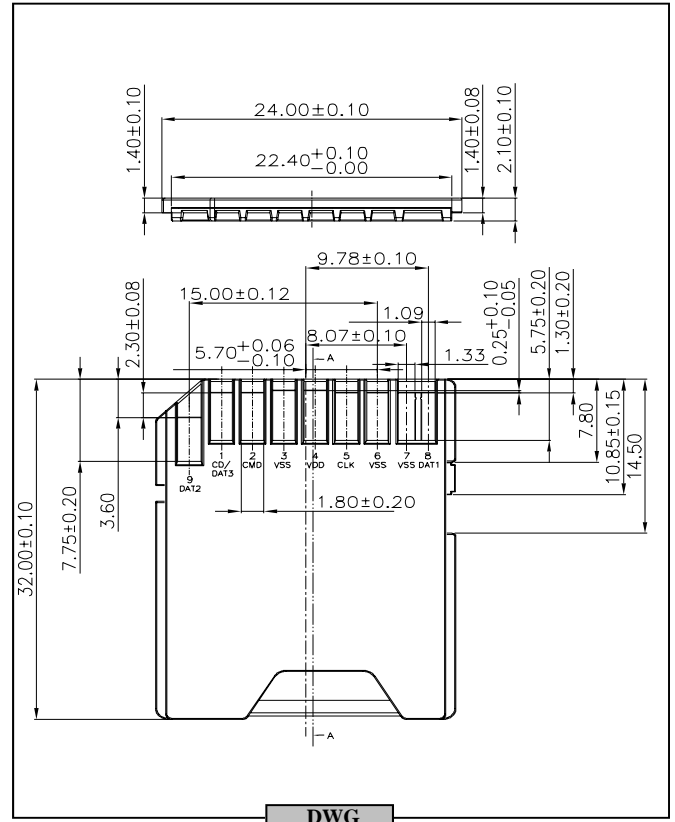
CURRENT RATING : 1 A AC/DC Max
RATED VOLTAGE : 500 V RMS Min.

ELECTRICAL

CONTACT RESISTANCE : 100 mΩ Max.
INSULATION RESISTANCE : 1000 MΩ Max.
DIELECTRIC WITHSTANDING VOLTAGE : 500 VAC/RMS

OPERATING TEMPERATURE

-25°C ~ + 85°C



106-00120-**

Mini-SD to SD Adapter



MATERIAL

HSG : HIGH TEMPERATURE THERMOPLASTIC
CONTACT : COPPER ALLOY

RATING

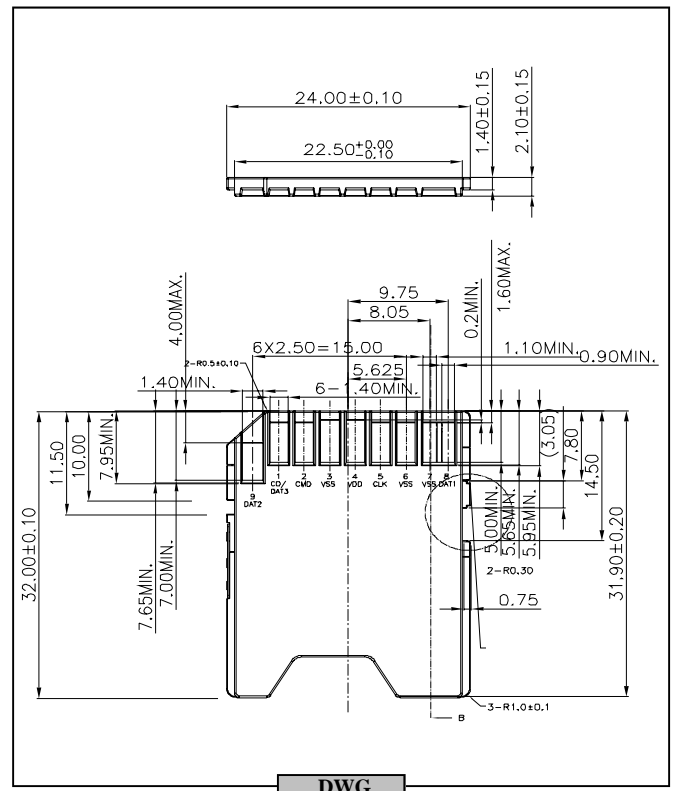
CURRENT RATING : 1 A AC/DC Max
RATED VOLT- 500 V RMS Min.

ELECTRICAL

CONTACT RESISTANCE : 100 mΩ Max.
INSULATION RESISTANCE : 1000 MΩ Max.
DIELECTRIC WITHSTANDING VOLTAGE : 500 VAC/RMS

OPERATING TEMPERATURE

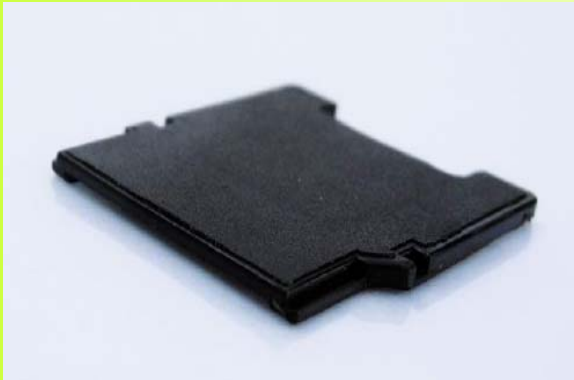
-25°C ~ + 85°C



Adapter Socket

106-00330

Micro-SD to mini-SD Adapter



MATERIAL

HSG : HIGH TEMPERATURE THERMOPLASTIC
CONTACT : COPPER ALLOY

RATING

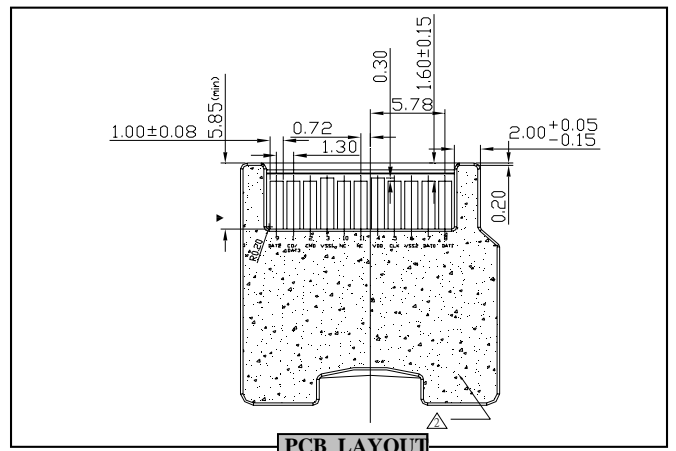
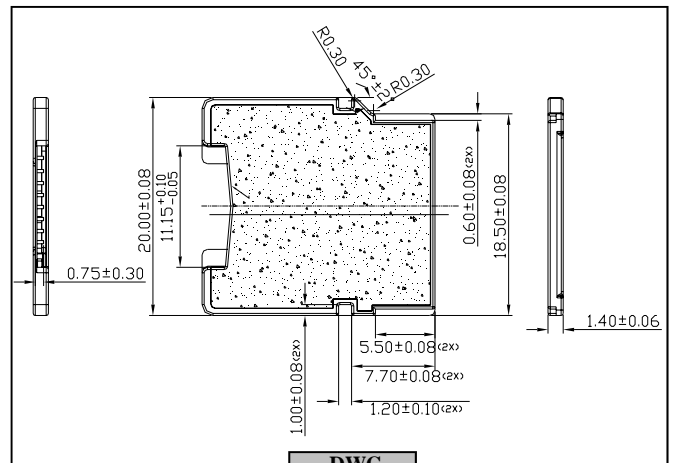
CURRENT RATING : 1 A AC/DC Max
RATED VOLT- 500 V RMS Min.

ELECTRICAL

CONTACT RESISTANCE : 100 mΩ Max.
INSULATION RESISTANCE : 1000 MΩ Max.
DIELECTRIC WITHSTANDING VOLTAGE : 500 VAC/RMS

OPERATING TEMPERATURE

-25°C ~ + 85°C



106-00351

Micro-SD to SD Adapter



MATERIAL

HSG : HIGH TEMPERATURE THERMOPLASTIC
CONTACT : COPPER ALLOY

RATING

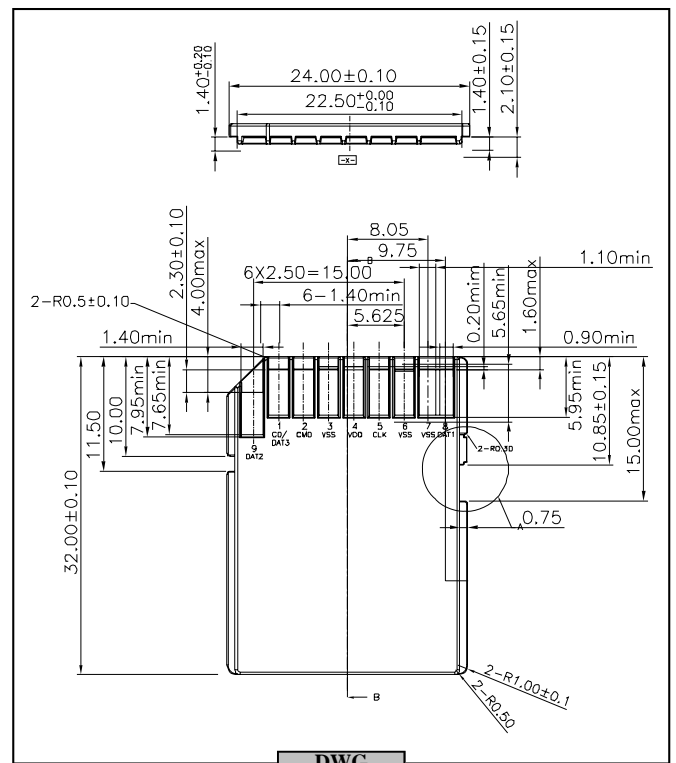
CURRENT RATING : 1 A AC/DC Max
RATED VOLTAGE : 500 V RMS Min.

ELECTRICAL

CONTACT RESISTANCE : 100 mΩ Max.
INSULATION RESISTANCE : 1000 MΩ Max.
DIELECTRIC WITHSTANDING VOLTAGE : 500 VAC/RMS

OPERATING TEMPERATURE

-25°C ~ + 85°C



105-00208-**

MMI Connector, Cable-end Plug



MATERIAL

HSG : HIGH TEMPERATURE THERMOPLASTIC
CONTACT : COPPER ALLOY

RATING

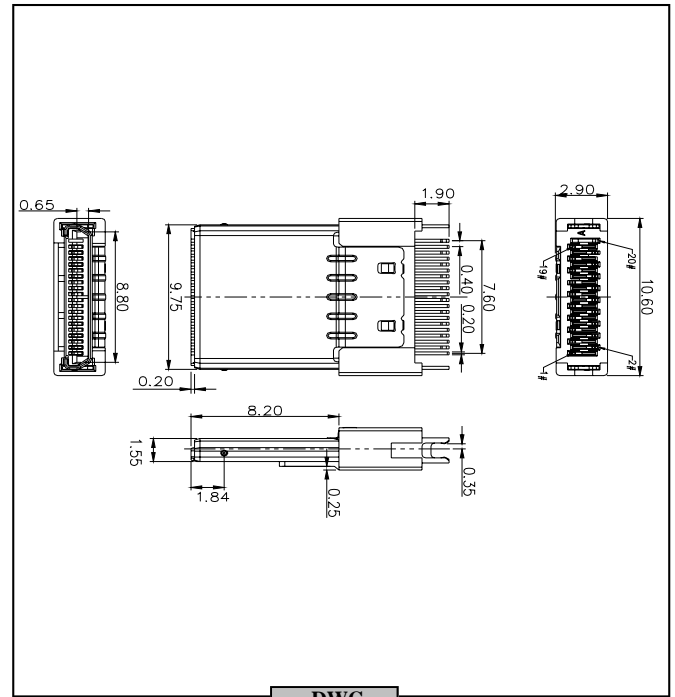
CURRENT RATING : 1 A AC/DC Max
RATED VOLT- 100 VAC

ELECTRICAL

CONTACT RESISTANCE : 100 mΩ Max.
INSULATION RESISTANCE : 1000 MΩ Max.
DIELECTRIC WITHSTANDING VOLTAGE : 500 VAC/RMS

OPERATING TEMPERATURE

-55°C ~ + 105°C



105-00210-**

MMI Connector, Board mount Receptacle



MATERIAL

HSG : HIGH TEMPERATURE THERMOPLASTIC
CONTACT : COPPER ALLOY

RATING

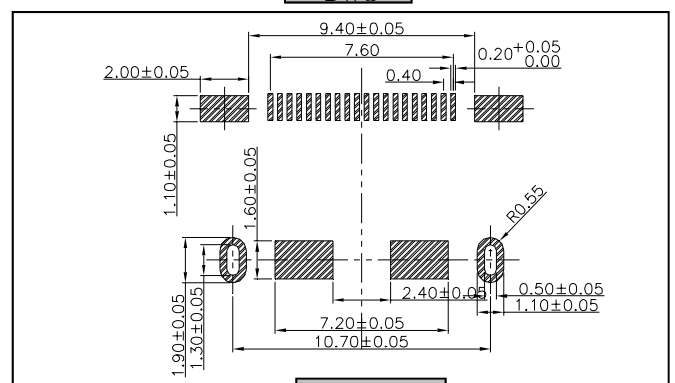
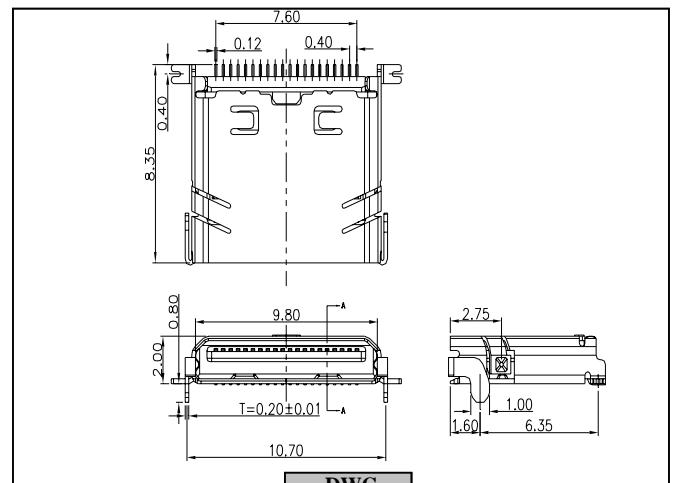
CURRENT RATING : 1 A AC/DC Max
RATED VOLT- 100 VAC

ELECTRICAL

CONTACT RESISTANCE : 100 mΩ Max.
INSULATION RESISTANCE : 1000 MΩ Max.
DIELECTRIC WITHSTANDING VOLTAGE : 500 VAC/RMS

OPERATING TEMPERATURE

-55°C ~ + 105°C



105-00321-**

Mini-USB



MATERIAL

HSG : HIGH TEMPERATURE THERMOPLASTIC
 CONTACT : COPPER ALLOY
 SHELL : COPPER ALLOY

RATING

CURRENT RATING : 1.5 A mp
 RATED VOLT-AGE : 50 VAC

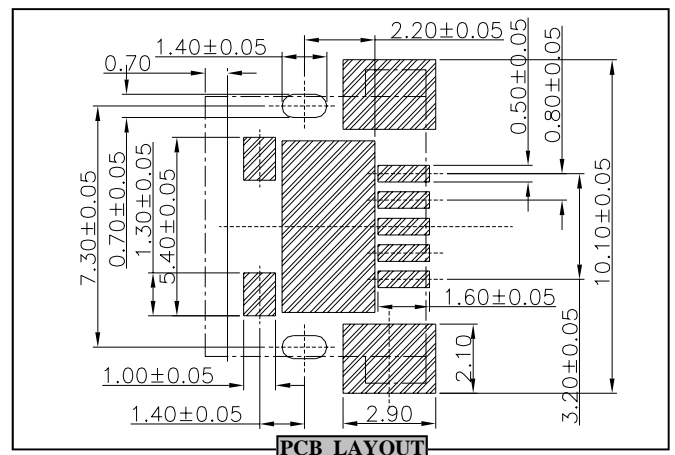
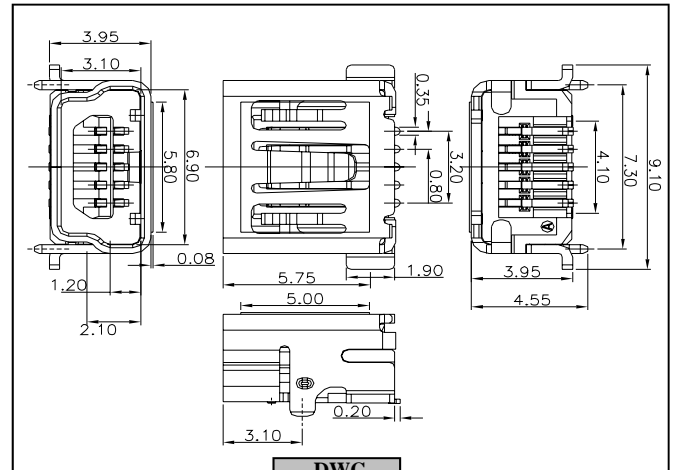
ELECTRICAL

CONTACT RESISTANCE : 50 mΩ Max.
 INSULATION RESISTANCE : 1000 MΩ Max.
 DIELECTRIC WITHSTANDING VOLTAGE : 500 VAC/RMS

OPERATING TEMPERATURE

-40°C ~ +85°C

Ultra Short Type



105-00569-**

Micro-USB



MATERIAL

HSG : HIGH TEMPERATURE THERMOPLASTIC
 CONTACT : COPPER ALLOY
 SHELL : COPPER ALLOY

RATING

CURRENT RATING : 1.5 A mp
 RATED VOLT- 50 VAC

ELECTRICAL

CONTACT RESISTANCE : 30 mΩ Max.
 INSULATION RESISTANCE : 1000 MΩ Max.
 DIELECTRIC WITHSTANDING VOLTAGE : 500 VAC/RMS

OPERATING TEMPERATURE

-30°C ~ +85°C

Reverse Type

