

HG\$Jer\$Q sxsW

Long Life Fan □ 120mm

WER \$GI 564P



Long Life Fans

■ Kirive\$ti\$ng\$er\$w

Life expectancy200,000 hours, indoor environment (survival rate: 90% at 60°C, rated voltage, and continuously run in a free air state)

Motor protection systemCurrent cut system (with reverse-connection protection)

Dielectric strength50/60 Hz, 500 VAC, 1 minute (between lead conductor and frame)

Operating thermally range -10°C to +60°C (non-condensing)

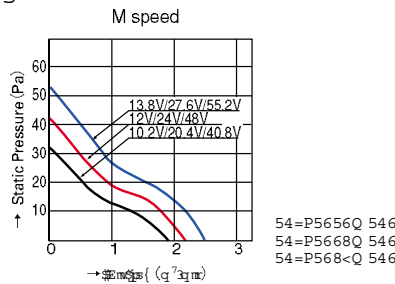
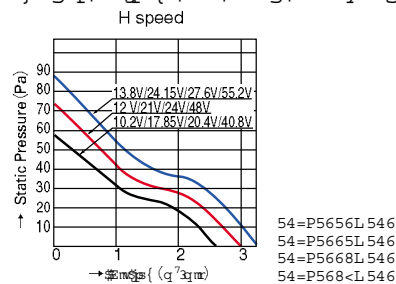
Fan power leadH speed, ⊕ red, ⊖ black
M speed, ⊕ red, ⊖ blue

7 < q q x l n g o

Wtignngexsrw

Model No	Rated voltage (V)	Operating voltage range (V)	Rated current (A)	Rated input (W)	Rated rotating speed (min ⁻¹)	Air flow (m ³ /min)	(CFM)	Static pressure (Pa)	Noise (dB[A])	Mass (g)
54=P5656L 546	12	10.2~13.8	0.4	4.8	2,850	3.0	106.0	70.5	41	370
54=P5656Q 546			0.22	2.64	2,150	2.25	79.4	41.1	34	
54=P5665L 546	21	17.8~24.2	0.24	5.04	2,850	3.0	106.0	70.5	41	
54=P5668L 546			0.21	5.04	2,850	3.0	106.0	70.5	41	
54=P5668Q 546	24	20.4~27.6	0.1	2.4	2,150	2.25	79.4	41.1	34	
54=P568<L 546			0.12	5.76	2,850	3.0	106.0	70.5	41	
54=P568<Q 546	48	40.8~55.2	0.06	2.88	2,150	2.25	79.4	41.1	34	

X) t n e p s { \$ r h \$ e x g \$ v i w y v i \$ l e v e x i v n z g w

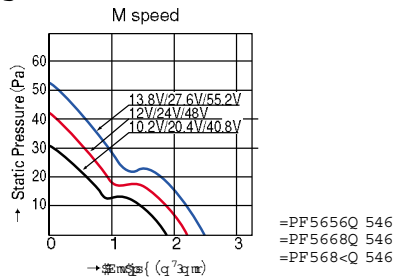
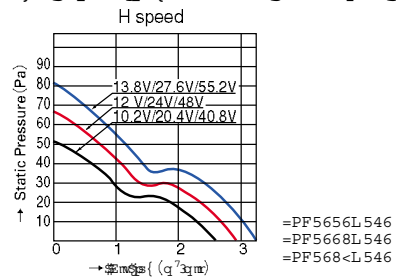


7 < q q x l n g o Low noise type

Wtignngexsrw

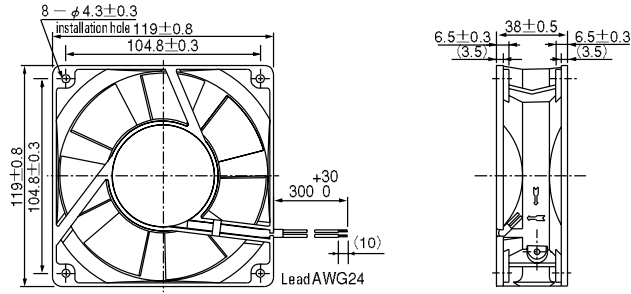
Model No	Rated voltage (V)	Operating voltage range (V)	Rated current (A)	Rated input (W)	Rated rotating speed (min ⁻¹)	Air flow (m ³ /min)	(CFM)	Static pressure (Pa)	Noise (dB[A])	Mass (g)
=PF5656L 546	12	10.2~13.8	0.39	4.68	2,600	2.9	102.4	67.62	39	370
=PF5656Q 546			0.22	2.64	2,000	2.2	77.7	42.14	32	
=PF5668L 546	24	20.4~27.6	0.19	4.56	2,600	2.9	102.4	67.62	39	
=PF5668Q 546			0.11	2.64	2,000	2.2	77.7	42.14	32	
=PF568<L 546	48	40.8~55.2	0.11	5.28	2,600	2.9	102.4	67.62	39	
=PF568<Q 546			0.06	2.88	2,000	2.2	77.7	42.14	32	

X) t n e p s { \$ r h \$ e x g \$ v i w y v i \$ l e v e x i v n z g w



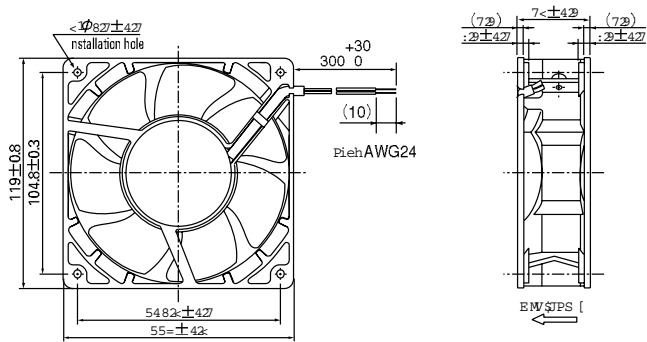
120mm

Horizontal type



Standard type

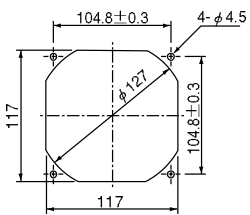
Long Life Fans



Low noise type

Vertical type

Horizontal type



120mm

SANYO DENKI

51591500 me Is wyoe (Xswlmg e loy Xso) s; 41<895 (Net er: 2LSRI 34/ <577=5; 9595
Leq i; Teki lxt 33 ({ Wer) shiro qst

How to read the model number

General fans

109

Represents a fan motor.

R

Additional number: Used to classify the remodeling performed or for other purposes.

P : Mold frame type
R : Mold frame type
E : Aluminum frame
L : Long Life Fan
W : Splash Proof Fan

12

Frame dimensions code

04 : 40 x 40mm
05 : 52 x 52mm
06 : 60 x 60mm
08 : 80 x 80mm
09 : 92 x 92mm
12 : 119 x 119mm
14 : 140 x 140mm
17 : 172mm dia
57 : 172mm dia,
51 mm wide,
side cut

12

Voltage code
05 : 5v
12 : 12V
21 : 21V
24 : 24V
48 : 48V

H

Speed code

S : Super-speed
H : **High speed**
F : Medium speed between H and M
M : Middle speed
L : Low speed
W : Wide range
MH : Two speeds, H and M

1

Sensor and specific specification code

01 : With pulse sensor
02 : Sensor-less
D01 : With lock sensor
H01 : With low-speed sensor

D01

Frame thickness code

1 : 38mm thick 5 : 51mm thick
2 : 32mm thick 6 : 20mm thick
3 : 28mm thick 7 : 15mm thick
4 : 25mm thick

1

Ribless 1
Ribbed

Thermally speed controlled fans

109

Represents a fan motor.

R

Additional number: Used to classify the remodeling performed or for other purposes.

P : Mold frame type
R : Mold frame type

12

Frame dimensions code

05 : 52 x 52mm
06 : 60 x 60mm
08 : 80 x 80mm
09 : 92 x 92mm
12 : 119 x 119mm

12

Voltage code
12 : 12V

T

Represents a thermally speed controlled fan.

1

Frame thickness code

1 : 38mm thick
4 : 25mm thick
6 : 20mm thick
7 : 15mm thick

H

Speed code

H : High speed

11

Sensor and specific specification code

10 : With lock sensor
11 : **With pulse sensor**
12 : Sensor-less

2

External view code

Nil: Ribbed frame product with an external thermistor
1: Ribless frame product with an external thermistor
2 : Ribbed frame product with a built-in thermistor
3 : Ribless frame product with a built-in thermistor

CPU cooler

109

Represents a fan motor.

P

Additional number: Used to classify the remodeling performed or for other purposes.

P : Mold frame type

44

Heat sink dimensions code

44 : 45 x 45mm or 44.5 x **44.5mm**
54 : 54 x 54mm or 50.8 x **50.8mm**
66 : 66 x 62mm

05

Voltage code

05 : 5V
12 : 12V

H

Speed code,

H : High speed
M : Middle speed

8

Frame thickness code

2 : 30mm thick
8 : **18mm thick**
9 : 10mm thick

D01

Sensor and specific specification code

01 : With pulse sensor
02 : Sensor-less
D01 : With lock sensor

6

External view code

6 : Terminal type

Sirocco fan

109

Represents a fan motor.

B

Additional number: Used to classify the remodeling performed or for other purposes.

B : Represents a sirocco fan.

F

Frame dimensions code
F : 120 x 120mm

12

Voltage code

12 : 12V
24 : 24V

H

Speed code

H : High speed
M : Middle speed

A

Sensor specification code

A : Sensor-less
C : With a pulse sensor
D : With a lock sensor

2

Frame thickness code

2 : 32mm thick