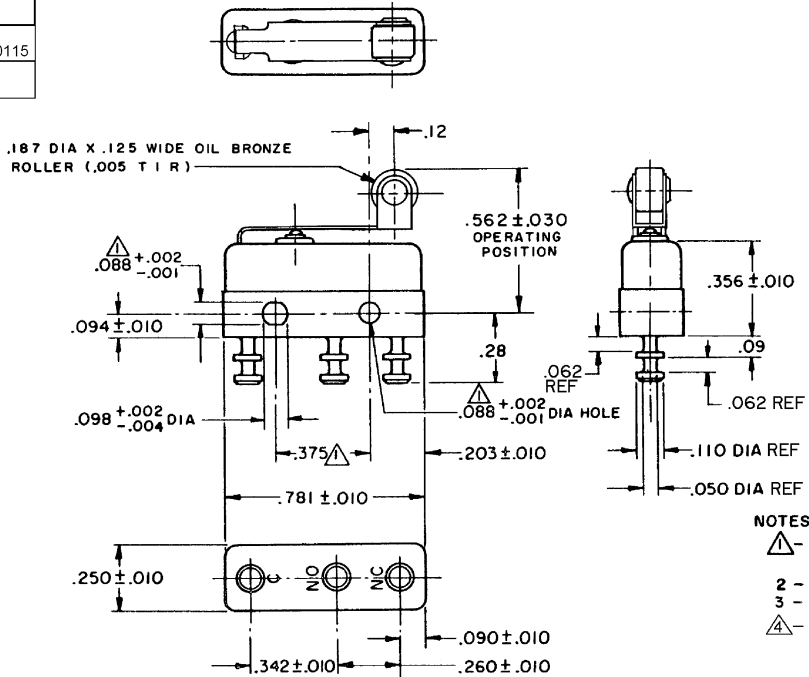


FO-55111-A

HONEYWELL PART NUMBER
141SM2-T2
PRODUCT CODE
TYS0115
FAA-PMA

REV	DOCUMENT	CHANGED BY	CHECK
11	0038113	PRS 12JUN08	BLR



- NOTES**
- MOUNTING HOLES WILL ACCEPT PINS OR SCREWS OF .087 MAX DIA ON .375 ± .002 CENTERS
 - 2 - TERMINALS ARE PLATED FOR SOLDERING**
 - 3 - SWITCH WILL WITHSTAND TEMPERATURE OF 250° F**
 - FOR MANUFACTURING DETAIL SEE ASSEMBLY DRAWING 141SM2-T2 FOR FAA-PMA

RELEASE NO.	PR - 1353
REPLACES	-

CHARACTERISTICS	ELECTRICAL DATA	DESIGN UNITS: INCH TOLERANCES UNLESS NOTED:	DRAWN	VK	30 OCT 07	Honeywell
			CHECK	RJ	30 OCT 07	
OPERATING FORCE - - - - 7 OZ MAX	CONTACT ARRANGEMENT SPDT	NO PLACE	THIS DRAWING COVERS A PROPRIETARY ITEM AND IS THE PROPERTY OF HONEYWELL. THIS DRAWING IS NOT TO BE COPIED OR USED WITHOUT THE PERMISSION OF HONEYWELL.			TITLE
RELEASE FORCE - - - - 2 OZ MIN		ONE PLACE	.X ±	INTERPRET PER ANSI Y14.5M-1982 OTHER HONEYWELL ENGINEERING STANDARDS MAY APPLY		
PRETRAVEL - - - - .219 MAX	APPROVALS	TWO PLACE	.XX ±	FAA-PMA	L190	SIZE
DIFFERENTIAL TRAVEL - - .025 MAX		THREE PLACE	.XXX ±			B
OVERTRAVEL - - - - .030 MIN	AVIATION	FOUR PLACE	.XXXX ±	TYPE	I	DRAWING NAME
	FAA - PMA	ANGLES	±	WEIGHT	.008 LB MAX	141SM2-T2
		THIRD ANGLE PROJECTION		SHEET	1 OF 1	REV
						11