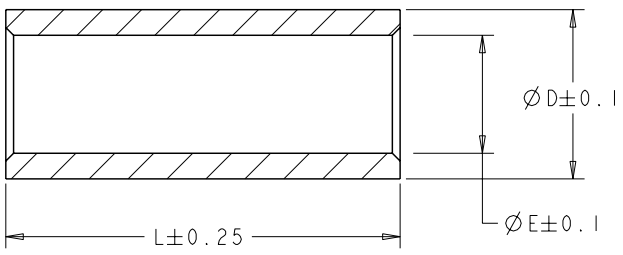
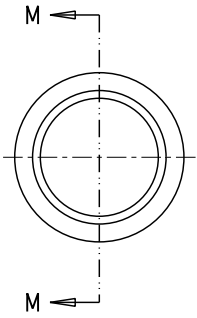


THIS DRAWING IS UNPUBLISHED. RELEASED FOR PUBLICATION
 COPYRIGHT 20 BY TYCO ELECTRONICS CORPORATION. ALL RIGHTS RESERVED.

LOC	DIST	REVISIONS				
P	LTR	DESCRIPTION	DATE	DWN	APVD	
2		REDRAWN - UPDATED	10JUN2003	BY	RW	
0		REVISED PER 0G3B-1056-04	13MAR2006	KW	JE	



SECTION M-M

28.0	12.2	11.2	#2/0 TO #1/0	350 AMP	1604121-6
25.4	10.9	7.6	#1/0 TO #4 AWG	175 AMP	1604121-5
25.4	10.9	8.6	#1/0 TO #2 AWG	175 AMP	1604121-4
25.4	10.9	9.9	#1/0 TO #1 AWG	175 AMP	1604121-3
25.4	10.9	5.8	#1/0 TO #6 AWG	175 AMP	1604121-2
25.4	10.9	4.8	#1/0 TO #10 AWG	175 AMP	1604121-1
L ± 0.25 (LENGTH)	Ø D ± 0.1 (O.D.)	Ø E ± 0.1 (I.D.)	REDUCTION RANGE	CONNECTOR SERIES	PART NUMBER
DIMENSIONS			DESCRIPTION		

- MATERIAL: COPPER
- PLATING: SILVER

METRIC

<small>THIS DRAWING IS A CONTROLLED DOCUMENT FOR TYCO ELECTRONICS CORPORATION AND IS SUBJECT TO CHANGE. THE CONTROLLING ENGINEERING ORGANIZATION SHOULD BE CONTACTED FOR THE LATEST REVISION.</small>		DWN: 10JUN2003 Brent D. John CHK: 10JUN2003 R. P. WALTER APVD: 10JUN2003 R. P. WALTER	tyco Electronics Tyco Electronics Harrisburg, PA 17105-3608
DIMENSIONS: mm	TOLERANCES UNLESS OTHERWISE SPECIFIED: 0 PLC ± 1 PLC ±0.5 2 PLC ±0.13 3 PLC ±0.013 4 PLC ±0.0001 ANGLES °	NAME: BUSHING, REDUCING, CRIMP, AMP POWER SERIES 175 AND 350	RESTRICTED TO:
MATERIAL: -	FINISH: -	APPLICATION SPEC: - WEIGHT: - SIZE: A3 CAGE CODE: 00779 DRAWING NO: C-1604121	CUSTOMER DRAWING
AMP 1470-19 REV 31MAR2000		SCALE: 4:1	SHEET 1 OF 1 REV 0