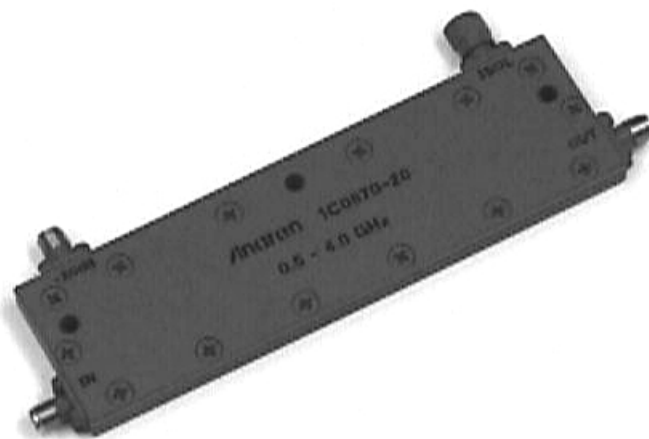




# Model 1C0870-20

## Directional Couplers "In-Line" Style



### Applications

- Subassemblies
- Lab Systems
- Leveling Loops
- Power Monitoring
- Test and Calibration

### Features

- Military Grade
- 0.5 - 4.0 GHz
- "In-Line" Configuration
- Connectors Per MIL-C-39012
- Rugged Aluminum Housing
- Built in Termination

### Electrical Specifications

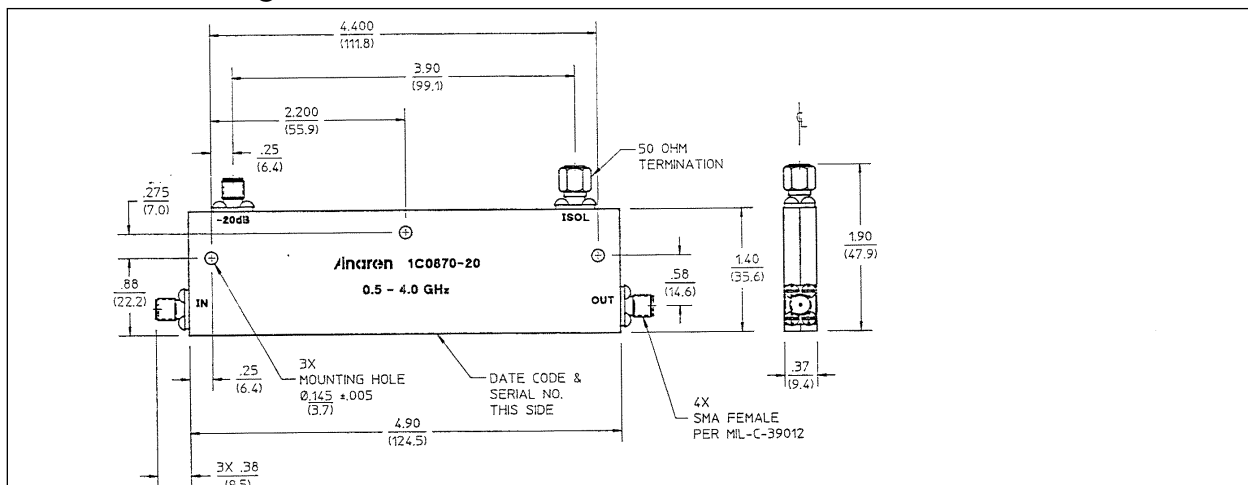
Model#	Frequency GHz	Coupling dB Mean	Insert. Loss dB Max	Input VSWR Max:1
1C0870-20	0.5 - 4.0	20.0 ± 1.5	0.50	1.30

Model #	Freq. Sems. dB Max	Directivity dB Min/Typ	Max CW Power* Forward	Backward
1C0870-20	±1.5	17/20	100	50

**Notes: Electrical and Mechanical Specifications subject to change without notice.** Impedance: 50 ohms nominal. Meets MIL-E-5400 Class 3 requirements. Additional screening available for military and space applications. \*These power ratings apply when coupled port VSWR is 2.0:1 or less. Higher power can be handled with a lower VSWR termination. In general the Max CW Power is identical to 3 dB couplers when there is no internal termination or one supplied by Anaren. All models have SMA connectors.

### Outline Drawing



**Sales Desk USA:** Voice: (800) 544-2414 Fax: (315) 432-9121  
**Sales Desk Europe:** Voice: (+44) 23 92 232392 Fax: (+44) 23 92 251369

# Mouser Electronics

Authorized Distributor

Click to View Pricing, Inventory, Delivery & Lifecycle Information:

[Anaren:](#)

[1C0870-20](#)