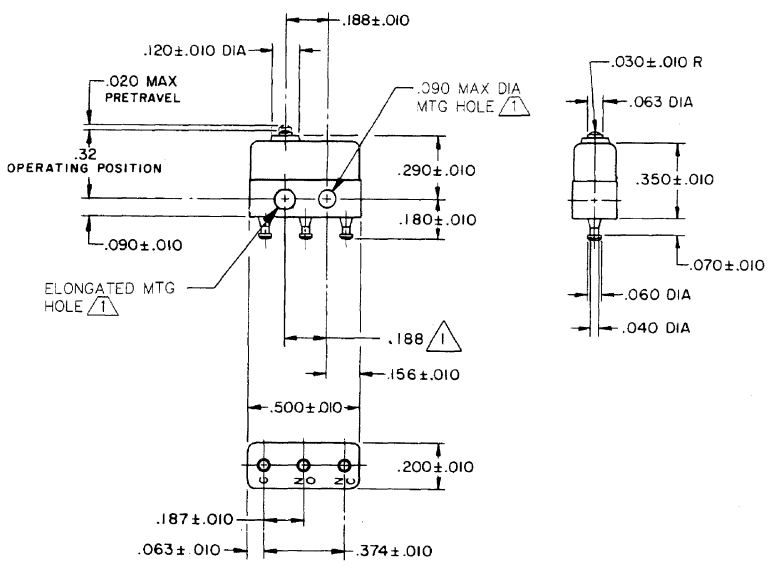
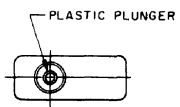


HONEYWELL  
PART NUMBER  
11SX22-T  
PRODUCT CODE  
VDJ2120

REV	DOCUMENT	CHANGED BY	CHECK
11	0038448	VS 28APR08	BLR



**NOTES**

1 MOUNTING HOLES WILL ACCEPT PINS OR SCREWS OF .087 MAX DIA ON .188 ± .002 CENTERS

2 - TERMINALS ARE PLATED FOR SOLDERING

3 - SWITCH WILL WITHSTAND TEMPERATURE OF 250° F

RELEASE NO.	PR-5481
REPLACES	

<b>CHARACTERISTICS</b> OPERATING FORCE - - - 2.5 - 5 OZ RELEASE FORCE - - - - 1 OZ MIN DIFFERENTIAL TRAVEL - - - .002 MAX OVERTRAVEL - - - - - .004 MIN	<b>ELECTRICAL DATA</b> CONTACT ARRANGEMENT S P D T <table border="1"> <tr> <td>28 VOLTS DC RATING</td> <td>115 VOLTS AC, 60 CPS</td> </tr> <tr> <td>SEA LEVEL</td> <td>50,000 FT</td> </tr> <tr> <td>INDUCTIVE</td> <td>3 AMP 2 AMP 5 AMP</td> </tr> <tr> <td>RESISTIVE</td> <td>5 AMP 4 AMP 5 AMP</td> </tr> </table>	28 VOLTS DC RATING	115 VOLTS AC, 60 CPS	SEA LEVEL	50,000 FT	INDUCTIVE	3 AMP 2 AMP 5 AMP	RESISTIVE	5 AMP 4 AMP 5 AMP	<b>DESIGN UNITS: INCH</b> TOLERANCES UNLESS NOTED: NO PLACE .X ± ONE PLACE .X ± TWO PLACE .XX ± THREE PLACE .XXX ± FOUR PLACE .XXXX ± ANGLES ±	DRAWN SPK 08FEB08 CHECK RJ 08FEB08	<b>Honeywell</b> TITLE SWITCH - BASIC
		28 VOLTS DC RATING	115 VOLTS AC, 60 CPS									
SEA LEVEL	50,000 FT											
INDUCTIVE	3 AMP 2 AMP 5 AMP											
RESISTIVE	5 AMP 4 AMP 5 AMP											
APPROVALS KEMA CE 5A 250 V - T125 5E4 UL CSA 5A 250 VAC	INTERPRET PER ANSI Y14.5M-1982 OTHER HONEYWELL ENGINEERING STANDARDS MAY APPLY	SIZE B TYPE I DRAWING NAME 11SX22-T SCALE - WEIGHT: .003 LB MAX SHEET 1 OF 1										