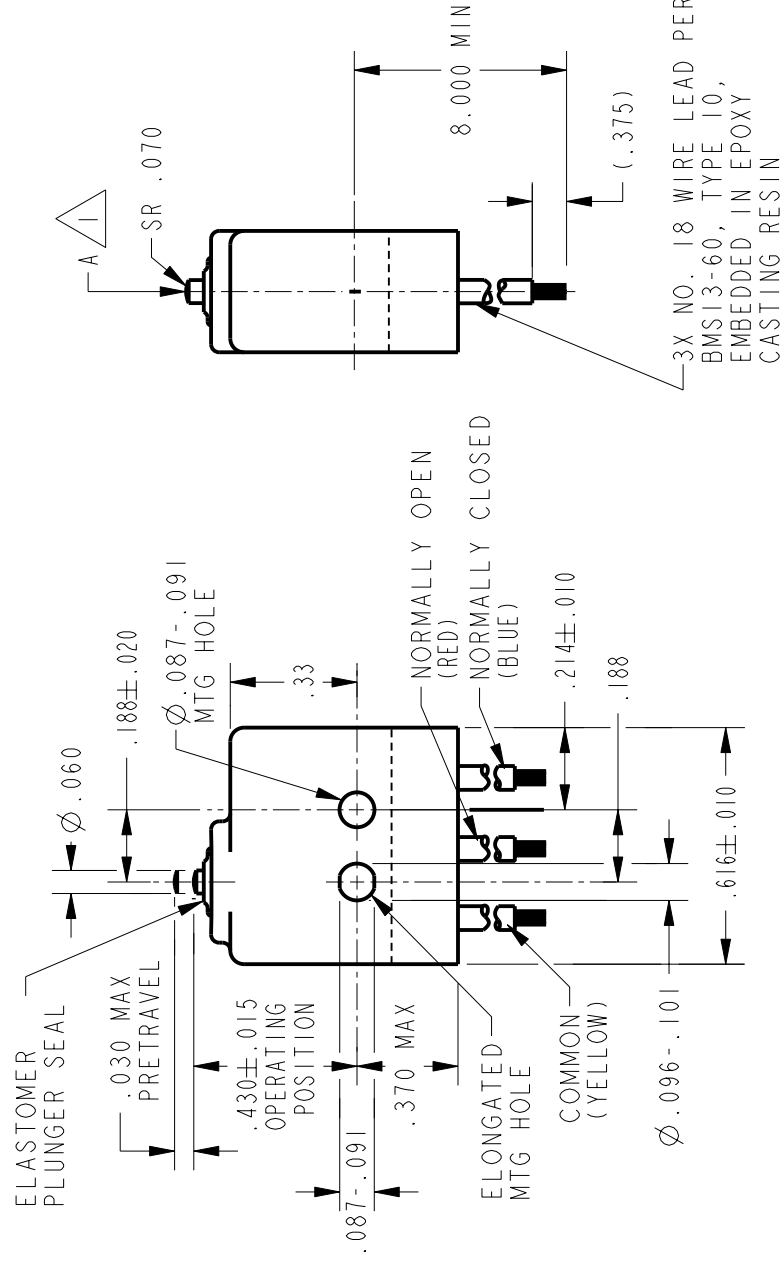
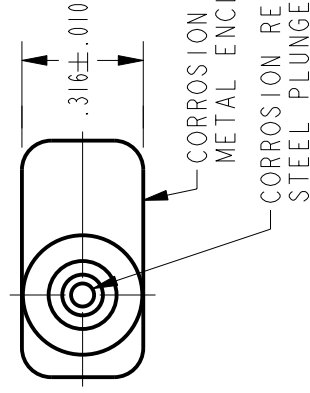


# SWITCH-BASIC


14XE65



## NOTES

- ACTUATION IN LINE WITH ARROW "A" IS RECOMMENDED  
WEIGHT OF SWITCH ONLY IS .16 OZ MAX. WEIGHT OF  
.75 OZ MAX
- 3 - FOR USE IN TEMPERATURE RANGE FROM MINUS -65° F TO PLUS +300° F
- 4 - WIRES ARE WELDED TO SWITCH TERMINALS

ANSI Y14.5M-1982 APPLIES

THIS DRAWING COVERS A PROPRIETARY ITEM AND IS THE PROPERTY OF MICRO SWITCH. A DIVISION OF HONEYWELL. THIS DRAWING IS NOT TO BE COPIED OR USED WITHOUT THE APPROVAL OF MICRO SWITCH.		THIRD ANGLE PROJECTION 	
CHARACTERISTICS		ELECTRICAL DATA	
OPERATING FORCE----- 9 OZ MAX RELEASE FORCE----- 2 OZ MIN RELEASE TRAVEL----- .004 MIN DIFFERENTIAL TRAVEL----- .005 MAX OVERTRAVEL----- .004 MIN		CONTACT ARRANGEMENT S P D T 28 VOLTS DC RATING INDUCTIVE-----SEA LEVEL----- 4 AMP 50,000 FT----- 2.5 AMP RESISTIVE-----SEA LEVEL----- 7 AMP 50,000 FT----- 7 AMP	
SCALE 2 : 1		DO NOT SCALE PRINT	
UNLESS OTHERWISE SPECIFIED TOLERANCES ARE		ONE PLACE ( . 0 ) ± . 030 TWO PLACE ( . 00 ) ± . 015 THREE PLACE ( . 000 ) ± . 005 ANGLES ±	
WEIGHT		2	

# Mouser Electronics

Authorized Distributor

Click to View Pricing, Inventory, Delivery & Lifecycle Information:

[Honeywell:](#)

[14XE65](#)