

MICRO SWITCH

FREEPORT ILLINOIS, U.S.A
A DIVISION OF HONEYWELL

FED. MFG. CODE 91929

SWITCH - BASIC

CATALOG LISTING

12 SE6

12 SE6

DRAWING NUMBER

PAGE 1 OF 1

REPLACES

RELEASE NO. PR-1244

CHECK

APR 70

CH

CH

APR 70

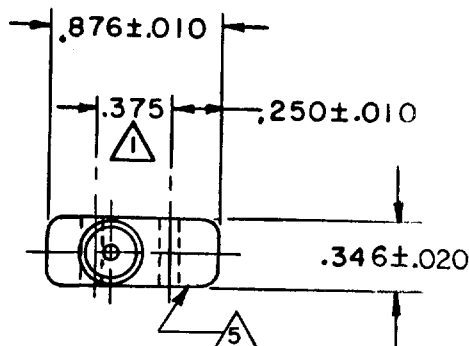
APR 70

APR 70

APR 70

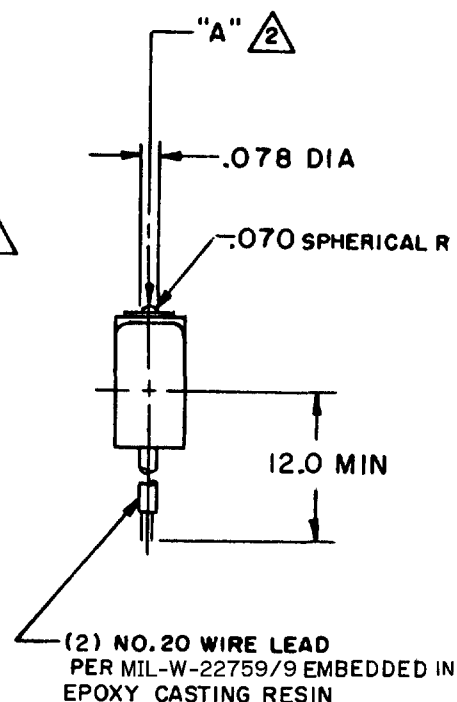
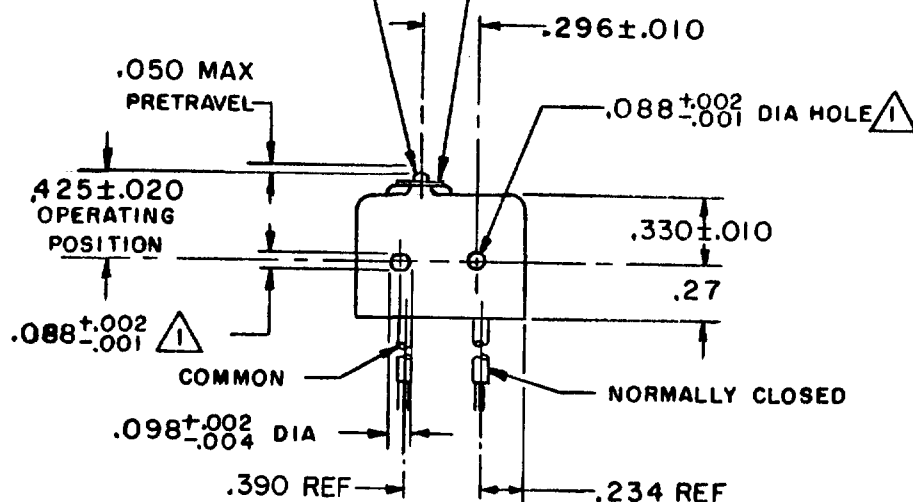
APR 70

APR 70



CORROSION RESISTANT
STEEL PLUNGER

SILICON RUBBER ELASTOMER
PLUNGER SEAL



NOTE-

- 1 MOUNTING HOLES WILL ACCEPT .087 MAX DIA PINS OR SCREWS ON .375±.002 CENTERS
- 2 ACTUATION IN LINE WITH ARROW "A" IS RECOMMENDED
- 3 WEIGHT OF SWITCH ONLY IS .26 OZ MAX, WEIGHT OF SWITCH WITH WIRE LEADS IS .51 OZ MAX
- 4 BASIC SWITCH SHALL HAVE A MAXIMUM RELEASE TIME OF (1) SECOND FOLLOWING 30 DAYS MAXIMUM EXPOSURE IN AIR THROUGH THE TEMPERATURE RANGE OF -65°F TO +221°F
- 5 CORROSION RESISTANT CHROMATE TREATED METAL ENCLOSURE

THIS DRAWING COVERS A PROPRIETARY ITEM AND IS THE PROPERTY OF MICRO SWITCH, A DIVISION OF HONEYWELL. THIS DRAWING IS NOT TO BE COPIED OR USED WITHOUT THE APPROVAL OF MICRO SWITCH.

CHARACTERISTICS

OPERATING FORCE ——— 5-19 OZ
RELEASE FORCE ——— 4 OZ MIN
RELEASE TRAVEL ——— .004 MIN
DIFFERENTIAL TRAVEL ——— .004 MAX
OVERTRAVEL ——— .003 MIN

ELECTRICAL DATA

CONTACT ARRANGEMENT
S P N C
250 VAC ——— 5 AMP
30 VOLTS DC RATING
INDUCTIVE ——— SEA LEVEL — 3 AMP
50,000 FT — 2.5 AMP
RESISTIVE ——— SEA LEVEL — 5 AMP
50,000 FT — 5 AMP
MAXIMUM INRUSH ——— 24 AMP

SCALE FULL

DO NOT SCALE PRINT

UNLESS OTHERWISE
NOTED

DIMENSIONS ARE IN INCHES

TOLERANCES ARE:

ONE PLACE (.0) ±.030
TWO PLACE (.00) ±.015
THREE PLACE (.000) ±.005
ANGLES ±

WEIGHT

3

FORMTEK

DRAWN

RER 3 APR 70

Mouser Electronics

Authorized Distributor

Click to View Pricing, Inventory, Delivery & Lifecycle Information:

[Honeywell:](#)

[12SE6](#)