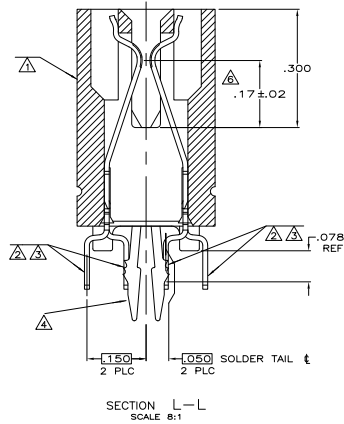
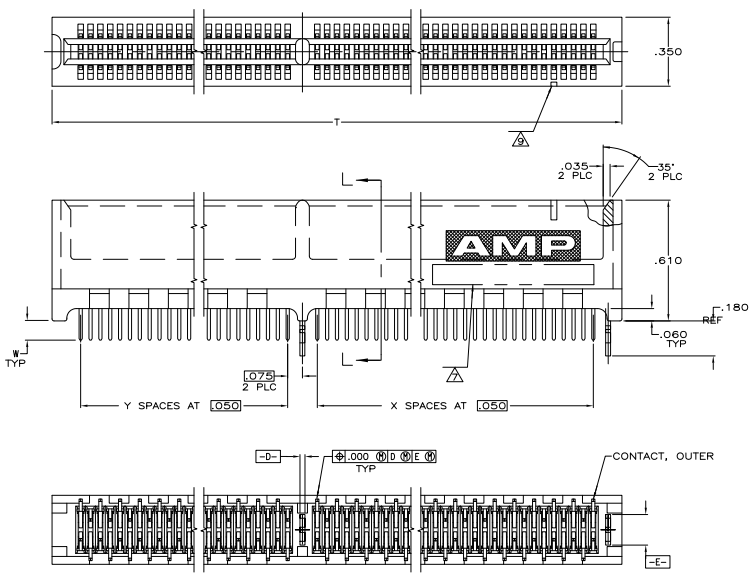


THIS DRAWING IS UNPUBLISHED. ALL RIGHTS RESERVED.
 © 1988 AMP ELECTRONICS CORPORATION. ALL RIGHTS RESERVED.

| REV | DATE | DESCRIPTION | BY | CHK |
|-----|---------------------------|-------------|---------|---------|
| 00 | | | | |
| N | E00-06-010778 | | 13M/204 | LAM/JWF |
| NT | REVISED PER E00-09-020935 | | 03SEP89 | KK/AEC |



- △ HOUSING: HIGH TEMPERATURE THERMOPLASTIC. COLOR: BROWN.
- △ CONTACT: PHOSPHOR BRONZE.
- △ CONTACT FINISH: .00050 MIN NICKEL ALL OVER. .00050 MIN GOLD OVER NICKEL IN CONTACT AREA. .000100 MIN TIN-LEAD OVER NICKEL ON SOLDER TAILS.
- △ METAL HOLD DOWN: BRASS
- △ METAL HOLD DOWN FINISH: .000050 MIN NICKEL ALL OVER. .000150 MIN TIN-LEAD ALL OVER
- △ DISTANCE FROM CONTACT POINT TO BOTTOM OF CARD SLOT.
- △ AMP PART NUMBER, DATE CODE AND CSA LOGO MARKED IN APPROXIMATE AREA SHOWN.
- △ DISTANCE FROM CONTACT POINT TO BOTTOM OF CARD SLOT.
- △ PIN ONE IDENTIFIER NOTCH ONLY ON PART NUMBERS INDICATED.
- △ OBSOLETE PARTS: OBSOLETE CIS STREAMLINING PER D.RENAUD/D.SINISI

SEE SHEET 2 FOR HOLE PATTERN

| W | PIN ONE IDENTIFIER | HOLD PATTERNS | V | U | T | S | Y | X | NO OF DUAL POSN | PART NUMBER | |
|------------|--------------------|---------------|-------|-------|-------|-------|-------|----|-----------------|-------------|----------|
| .125 | YES | B | 2.350 | 2.310 | 3.14 | .610 | 10 | 44 | 56 | 145020-8 | |
| .140 | YES | A | 2.550 | 2.510 | 4.89 | 2.160 | 41 | 48 | 91 | 145020-7 | |
| OBSOLETE | .125 | YES | A | 2.550 | 2.510 | 4.89 | 2.160 | 41 | 48 | 145020-6 | |
| SUPERSEDED | .125 | NO | D | 1.800 | 1.760 | 2.59 | .610 | 10 | 33 | 45 | 145020-5 |
| OBSOLETE | .140 | NO | C | 2.200 | 2.160 | 4.34 | 1.960 | 37 | 41 | 60 | 145020-4 |
| OBSOLETE | .160 | NO | D | 1.800 | 1.760 | 2.59 | .610 | 10 | 33 | 45 | 145020-3 |
| OBSOLETE | .160 | YES | 9 | 2.550 | 2.510 | 3.14 | .610 | 10 | 44 | 56 | 145020-2 |
| OBSOLETE | .160 | YES | A | 2.550 | 2.510 | 4.89 | 2.160 | 41 | 48 | 91 | 145020-1 |

THIS DRAWING IS A CONTROLLED DOCUMENT.

AMP ELECTRONICS CORPORATION
 Harrisburg, Pa 17105-3608

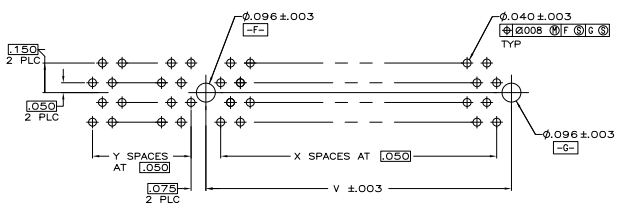
CONNECTIONS: AMP 108-14034
 AMP 114-26012

DATE: 11-1-82
 DRAWING NO: A100778
 PART NO: 145020

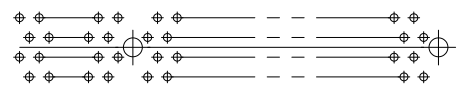
CONNECTIONS: AMP 108-14034
 AMP 114-26012

DATE: 11-1-82
 DRAWING NO: A100778
 PART NO: 145020

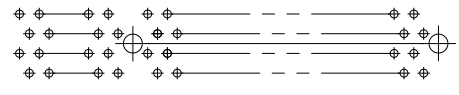
CUSTOMER DRAWING



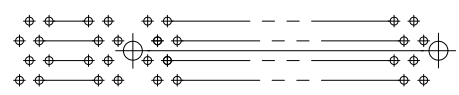
RECOMMENDED CONNECTOR MOUNTING HOLE PATTERN A
(CONNECTOR SIDE SHOWN)



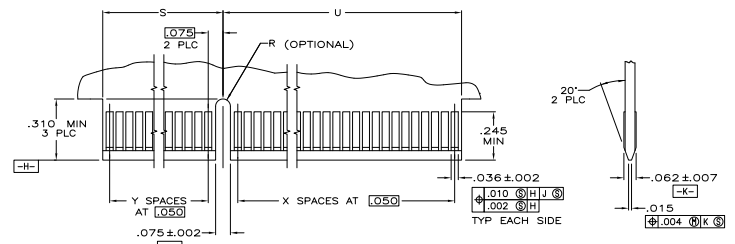
RECOMMENDED CONNECTOR MOUNTING HOLE PATTERN B
(CONNECTOR SIDE SHOWN)



RECOMMENDED CONNECTOR MOUNTING HOLE PATTERN C
(CONNECTOR SIDE SHOWN)



RECOMMENDED CONNECTOR MOUNTING HOLE PATTERN D
(CONNECTOR SIDE SHOWN)



RECOMMENDED MATING BOARD EDGE CONFIGURATION

| THIS DRAWING IS A CONTROLLED DOCUMENT. | | REV | DATE | DESCRIPTION | BY | APP |
|--|-------------|------|----------------------------|-------------|------|--------------|
| DESIGNER | APPROVED | 00 | | SEE SHEET 1 | | |
| DATE | BY | DATE | DESCRIPTION | BY | APP | |
| 108-14034 | | | CONNECTOR ASSEMBLY | | | |
| 114-26012 | | | DUAL POSITION | | | |
| | | | .050 SERIES, STANWARD EDGE | | | |
| SEE SHEET 1 | SEE SHEET 1 | DATE | ISSUE NO. | REV | DATE | REV |
| | | | A100779 | G=145020 | | |
| | | | CUSTOMER DRAWING | TABLE | 4.1 | SHEET 2 OF 2 |