

MICRO SWITCH

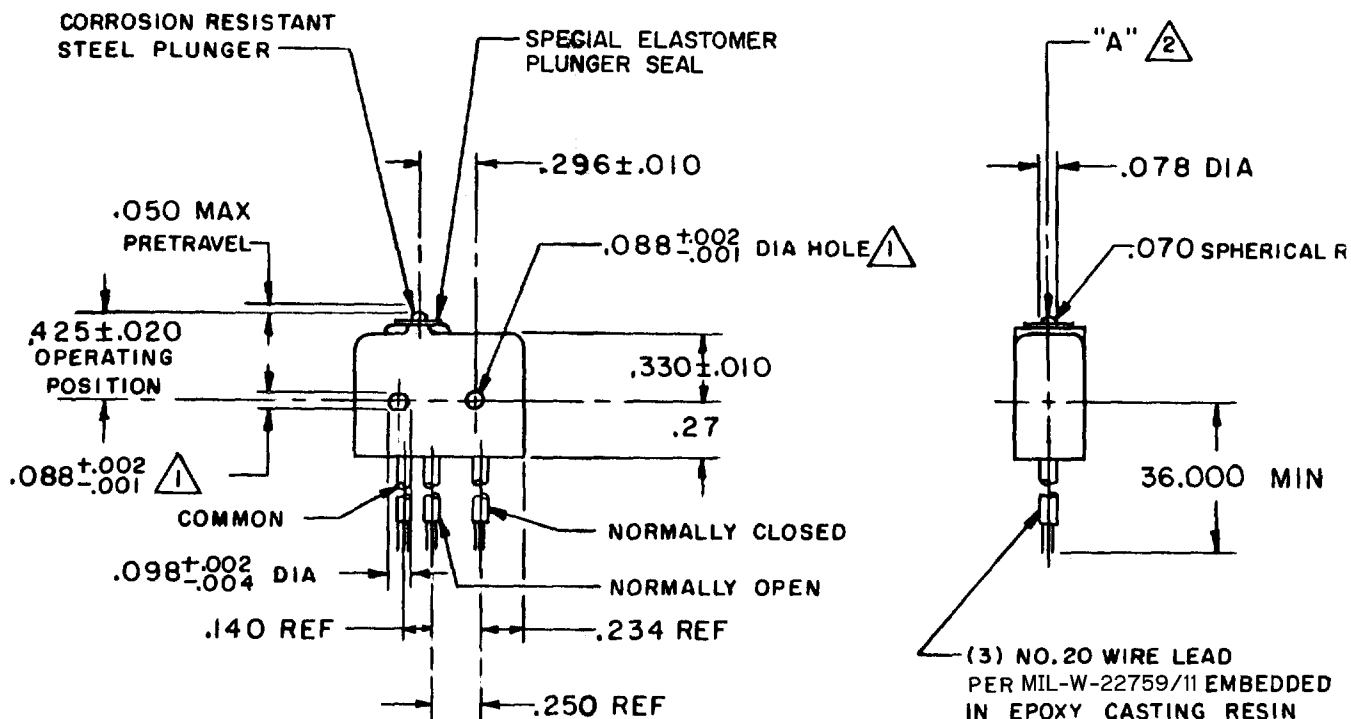
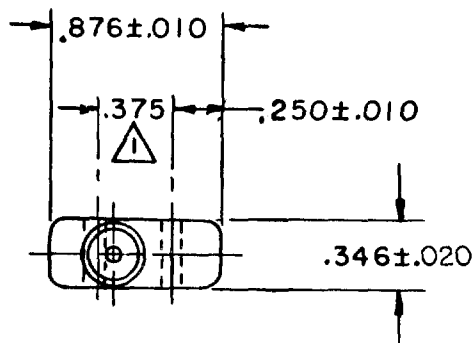
FREEPORT ILLINOIS, U.S.A
A DIVISION OF HONEYWELL

FED. MFG. CODE 91929

SWITCH-BASIC

CATALOG LISTING

12SEI-3



(3) NO.20 WIRE LEAD
PER MIL-W-22759/11 EMBEDDED
IN EPOXY CASTING RESIN

NOTE-

- 1 - MOUNTING HOLES WILL ACCEPT .087 MAX DIA PINS OR SCREWS ON .375±.002 CENTERS
- 2 - ACTUATION IN LINE WITH ARROW "A" IS RECOMMENDED
- 3 - WEIGHT OF SWITCH ONLY IS .26 OZ MAX, WEIGHT OF SWITCH WITH WIRE LEADS IS 1.00 OZ MAX
- 4 - ESTABLISHED FOR CESSNA AIRCRAFT CO.

THIS DRAWING COVERS A PROPRIETARY ITEM AND IS THE PROPERTY OF MICRO SWITCH, A DIVISION OF HONEYWELL. THIS DRAWING IS NOT TO BE COPIED OR USED WITHOUT THE APPROVAL OF MICRO SWITCH.

CHARACTERISTICS

OPERATING FORCE ----- 5-19 OZ

RELEASE FORCE ----- 4 OZ MIN
RELEASE TRAVEL ----- .004 MIN
DIFFERENTIAL TRAVEL ----- .004 MAX
OVERTRAVEL ----- .003 MIN

ELECTRICAL DATA

CONTACT ARRANGEMENT
S P D T

250 VAC ----- 5 AMP
30 VOLTS DC RATING

INDUCTIVE ----- SEA LEVEL ----- 3 AMP
50,000 FT ----- 2.5 AMP
RESISTIVE ----- SEA LEVEL ----- 5 AMP
50,000 FT ----- 5 AMP
MAXIMUM INRUSH ----- 24 AMP

SCALE FULL

DO NOT SCALE PRINT

UNLESS OTHERWISE
NOTED

DIMENSIONS ARE IN INCHES

TOLERANCES ARE:

ONE PLACE	(.0)	±.030
TWO PLACE	(.00)	±.015
THREE PLACE	(.000)	±.005
ANGLES		±.005

WEIGHT 3

12SEI-3

PAGE 1 OF 1

M

DRAWING
NUMBER

27

X8

ISSUE

8

REVISIONS

A	PR-2984	JAH	3 NOV 72
B	CO34213	J A L	26 SEPT 74
C	CO 51463-D	WJM	16 JUL 82
D	CO 55430	WJM	6 JUN 84
E	CO57041A	C JH	21 MAR 85
F	CO94274	DLM	MAR 99

FORMTEK

FD-80378-1A

DRAWN

MJB

22 OCT 70

CHECK

28 OCT 70

CHECK

28 OCT 70

CHECK

28 OCT 70

CHECK

28 OCT 70

CHECK

28 OCT 70

CHECK

28 OCT 70

Mouser Electronics

Authorized Distributor

Click to View Pricing, Inventory, Delivery & Lifecycle Information:

[Honeywell:](#)

[12SE1-3](#)