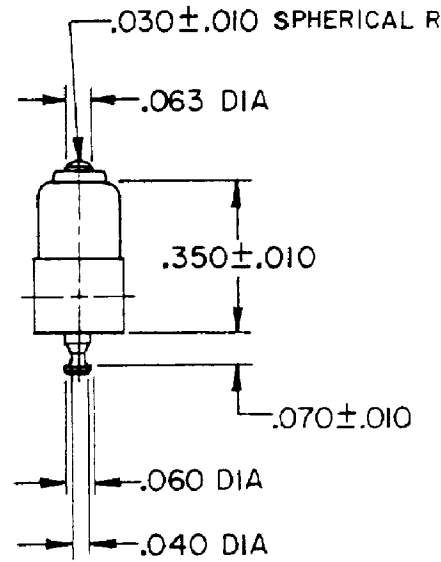
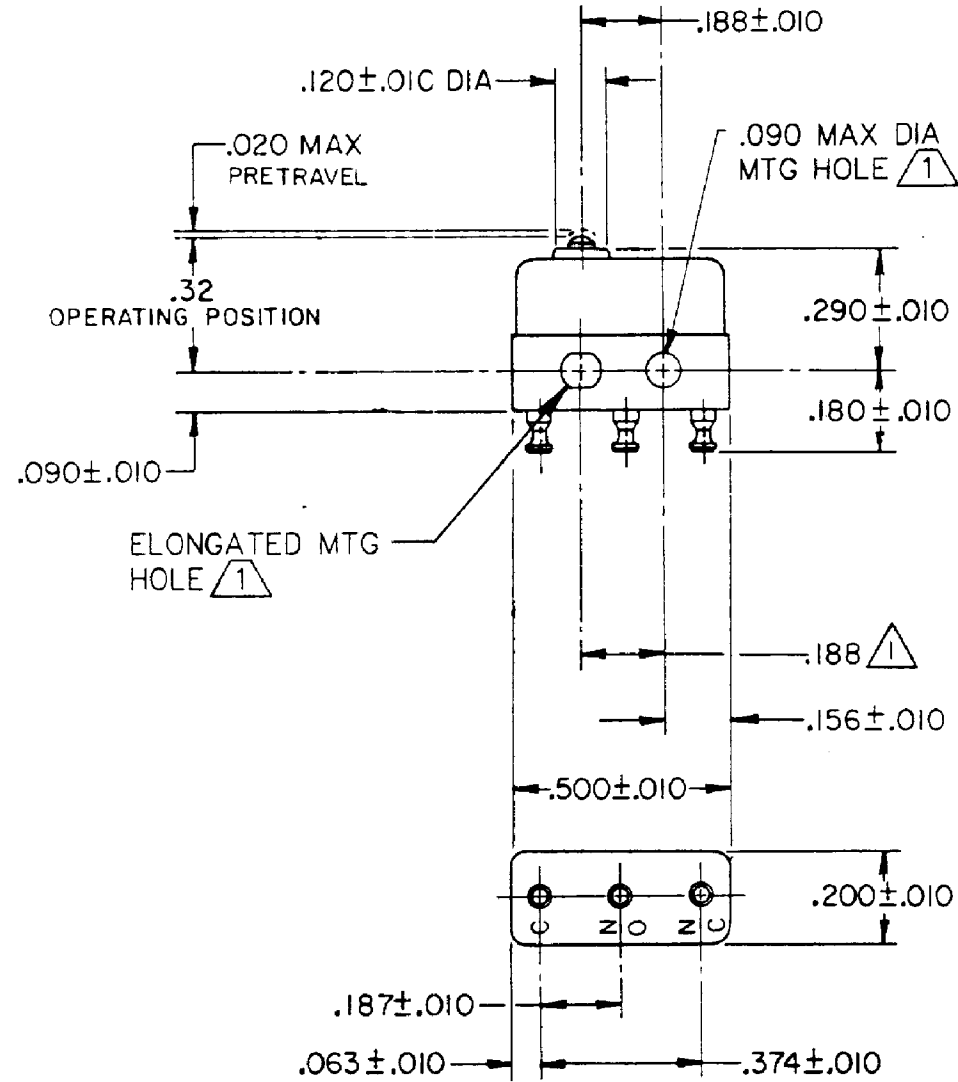
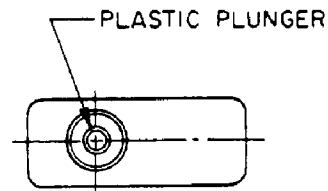


HONEYWELL PART NUMBER
11SX37-T
PRODUCT CODE
VDJ2186

REV	DOCUMENT	CHANGED BY	CHECK
5	0038448	VS 28APR08	BLR



NOTE -

- 1 MOUNTING HOLES WILL ACCEPT PINS OR SCREWS OF .087 MAX DIA ON .188 ± .002 CENTERS
- 2 - TERMINALS ARE PLATED FOR SOLDERING
- 3 - SWITCH WILL WITHSTAND TEMPERATURE OF 250°F

RELEASE NO.	PR-7928
REPLACES	

CHARACTERISTICS	
OPERATING FORCE - - -	2.5-5 OZ MAX
RELEASE FORCE - - - - -	1 OZ MIN
DIFFERENTIAL TRAVEL - - -	.001 MAX
OVERTRAVEL - - - - -	.004 MIN

ELECTRICAL DATA			
CONTACT ARRANGEMENT SPDT			
28 VOLTS DC RATING		115 VOLTS AC, 60 CPS	
SEA LEVEL	50,000 FT	SEA LEVEL	
INDUCTIVE	3 AMP	2 AMP	5 AMP
RESISTIVE	5 AMP	4 AMP	5 AMP

DESIGN UNITS: INCH	
TOLERANCES UNLESS NOTED:	
NO PLACE	X ±
ONE PLACE	.X ±
TWO PLACE	.XX ±
THREE PLACE	.XXX ±
FOUR PLACE	.XXXX ±
ANGLES	±

DRAWN	SPK	12FEB08
CHECK	RJ	12FEB08
THIS DRAWING COVERS A PROPRIETARY ITEM AND IS THE PROPERTY OF HONEYWELL. THIS DRAWING IS NOT TO BE COPIED OR USED WITHOUT THE PERMISSION OF HONEYWELL.		
INTERPRET PER ANSI Y14.5M-1982 OTHER HONEYWELL ENGINEERING STANDARDS MAY APPLY		

Honeywell			
TITLE SWITCH - BASIC			
SIZE	TYPE	DRAWING NAME	REV
B	I	11SX37-T	5

APPROVALS	KEMA, CE	5A 250 V - T125 5E4	UL, CSA	5A 250 VAC

THIRD ANGLE PROJECTION	

RASTER	
--------	--

SCALE	-	WEIGHT: .003 LB MAX	SHEET 1 OF 1
-------	---	---------------------	--------------