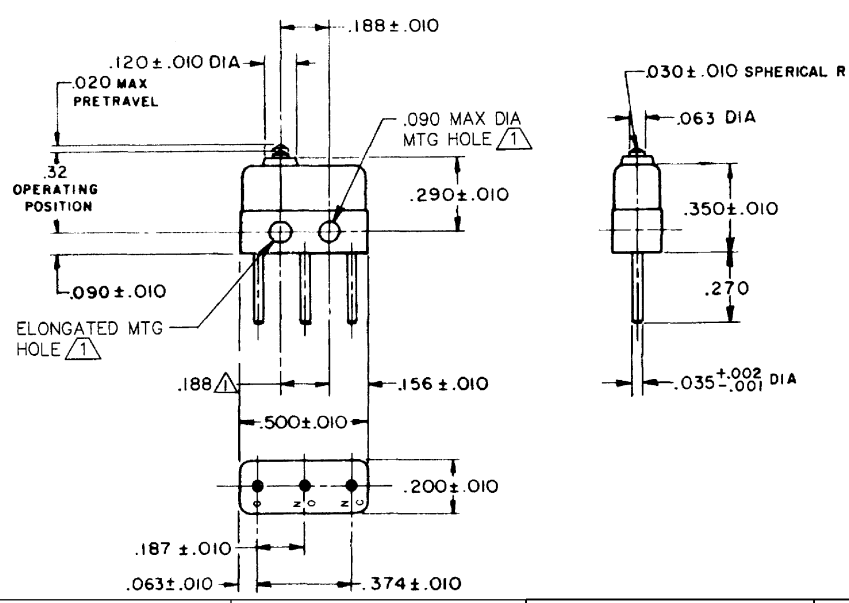


FO-55111-A

HONEYWELL
PART NUMBER
1SX24
PRODUCT CODE
VDA2400

REV	DOCUMENT	CHANGED BY	CHECK
6	0038446	KVB 20MAY08	BLR

PLASTIC PLUNGER



NOTE -
 MOUNTING HOLES WILL ACCEPT PINS OR SCREWS OF .087 MAX DIA ON .188 ± .002 CENTERS
 2-TERMINALS ARE PLATED FOR SOLDERING
 3-SWITCH WILL WITHSTAND TEMPERATURE OF 250° F

RELEASE NO.	SR 10806
REPLACES	-

CHARACTERISTICS
OPERATING FORCE - - - - 5 OZ MAX
RELEASE FORCE - - - - 1 OZ MIN
DIFFERENTIAL TRAVEL - - - .005 MAX
OVERTRAVEL - - - - - .004 MIN

ELECTRICAL DATA	
CONTACT ARRANGEMENT S P D T	
28 VOLTS DC RATING	
INDUCTIVE	SEA LEVEL 50,000 FT
RESISTIVE	MAXIMUM INRUSH 24 AMP
KEMA CE 7A 250V~T125 5E4 UL CSA 7A 250 VAC	

DESIGN UNITS: INCH	
TOLERANCES UNLESS NOTED:	
NO PLACE	.X ±
ONE PLACE	.XX ±
TWO PLACE	.XXX ±
THREE PLACE	.XXXX ±
FOUR PLACE	.XXXX ±
ANGLES	5°
THIRD ANGLE PROJECTION	

DRAWN	SPK	30NOV07
CHECK	RJ	30NOV07
THIS DRAWING COVERS A PROPRIETARY ITEM AND IS THE PROPERTY OF HONEYWELL. THIS DRAWING IS NOT TO BE COPIED OR USED WITHOUT THE PERMISSION OF HONEYWELL.		
INTERPRET PER ANSI Y14.5M-1982 OTHER HONEYWELL ENGINEERING STANDARDS MAY APPLY		
RASTER		

Honeywell			
TITLE SWITCH - BASIC			
SIZE	TYPE	DRAWING NAME	REV
B	I	1SX24	6
SCALE	-	WEIGHT:.003 LB MAX	SHEET 1 OF 1