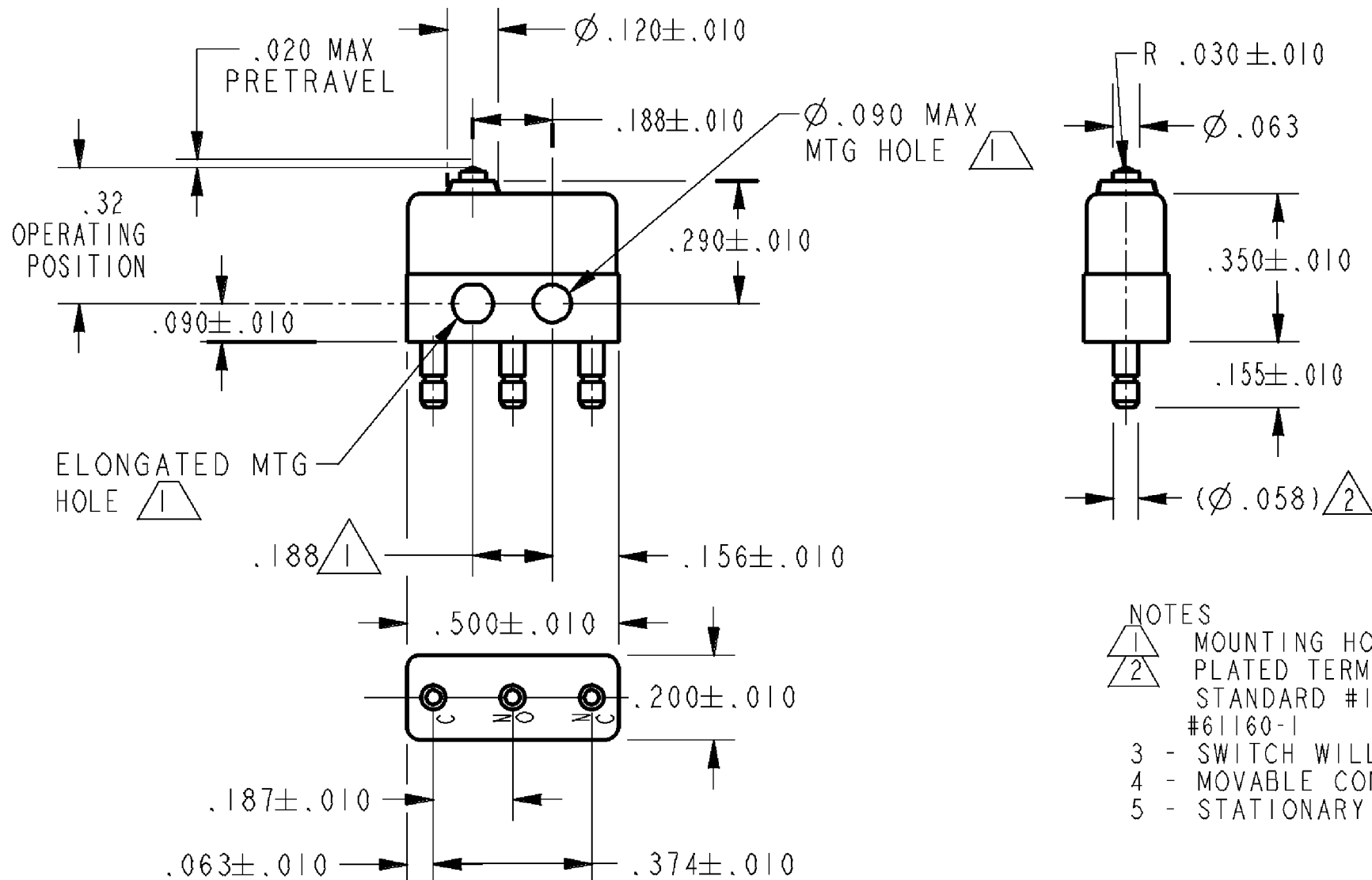
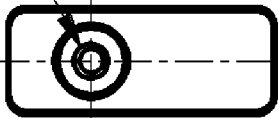


HONEYWELL PART NUMBER
13SX21-H58
PRODUCT CODE
VDK2795

REV	DOCUMENT	CHANGED BY	CHECK
12	0038449	VS 28APR08	BLR

PLASTIC PLUNGER



NOTES

- 1 MOUNTING HOLES WILL ACCEPT PINS OR SCREWS OF Ø.087 MAX ON .188 ± .002 CENTERS
- 2 PLATED TERMINALS WILL ACCEPT "AMP INC" Ø.058 PIN RECEPTACLES. FOR UL STANDARD #1054 REQUIREMENTS, MICRO SWITCH SUGGESTS "AMP INC" RECEPTACLE #61160-1
- 3 - SWITCH WILL WITHSTAND TEMPERATURE OF 250° F
- 4 - MOVABLE CONTACT MATERIAL: 24K SOLID GOLD OVERLAY
- 5 - STATIONARY CONTACT MATERIAL: GOLD ALLOY

RELEASE NO. PR-5056

REPLACES -

CHARACTERISTICS	
OPERATING FORCE	2.5 - 5 OZ
RELEASE FORCE	1 OZ MIN
DIFFERENTIAL TRAVEL	.002 MAX
OVERTRAVEL	.004 MIN

ELECTRICAL DATA		
CONTACT ARRANGEMENT SPDT		
30 VOLTS DC RATING		
	SEA LEVEL	50,000 FT
INDUCTIVE	1/2 AMP	1/2 AMP
RESISTIVE	1 AMP	1 AMP
MAXIMUM INRUSH 2 AMP		

DESIGN UNITS: INCH	
TOLERANCES UNLESS NOTED:	
NO PLACE	X ±
ONE PLACE	.X ±
TWO PLACE	.XX ±
THREE PLACE	.XXX ±
FOUR PLACE	.XXXX ±
ANGLES	±

DRAWN	VK	15 FEB 08
CHECK	RJ	15 FEB 08
THIS DRAWING COVERS A PROPRIETARY ITEM AND IS THE PROPERTY OF HONEYWELL. THIS DRAWING IS NOT TO BE COPIED OR USED WITHOUT THE PERMISSION OF HONEYWELL.		
INTERPRET PER ANSI Y14.5M-1982 OTHER HONEYWELL ENGINEERING STANDARDS MAY APPLY		

Honeywell			
TITLE SWITCH - BASIC			
SIZE	TYPE	DRAWING NAME	REV
B	I	13SX21-H58	12

APPROVALS	KEMA, CE	1A, 250V ~ T125 25E3	CE
	UL, CSA	1A, 125 VAC	UL, CSA

THIRD ANGLE PROJECTION

RASTER

SCALE	-	WEIGHT .003 LB MAX	SHEET 1 OF 1
-------	---	--------------------	--------------