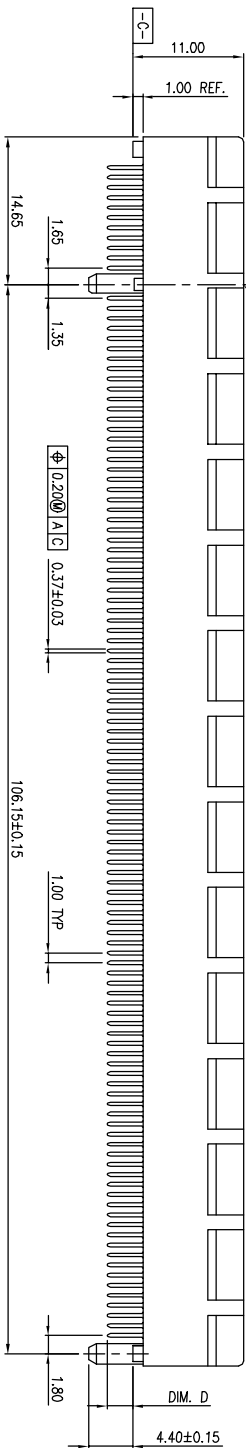
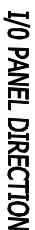


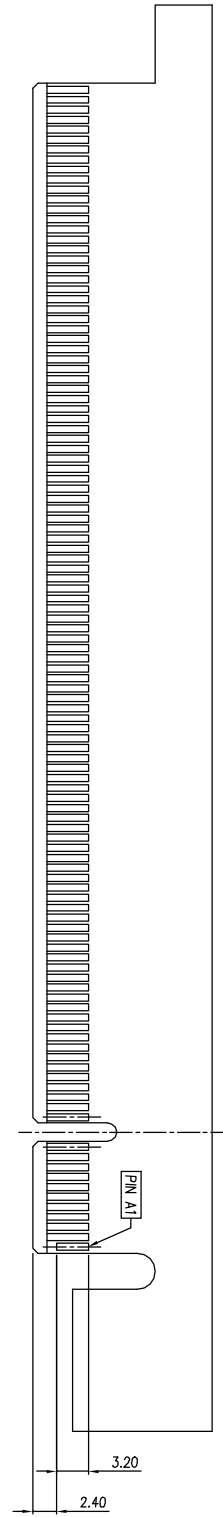
SECTION A-A





## 1-2

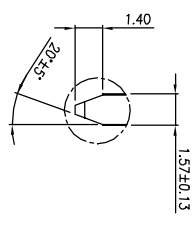
ACAD



I/O PANEL DIRECTION SECONDARY (SOLDER) SIDE →

→ I/O PANEL DIRECTION PRIMARY (COMPONENT) SIDE

ADD-IN CARD EDGE-FINGER DIMENSIONS



SCALE 2:1

mat'l. code		tolerances unless otherwise specified		CUSTOMER COPY		title		product family		code	
ltr	ecn no	dr	date	linear	projection	size	dwg no	family	PCI	sheet	of
A				.XX ±.25	0° ±2°	A4	10063960	PCI	PCI-E 230P CARD EDGE	3	4
				.XXX ±.10							
				angles							
				dr	JASON HSU	11/30/05					
				enrg	JASON HSU	11/30/05					
				chr	STERLING LIN	11/30/05					
				oppl	HC LIOU	11/30/05					
sheet	revision										
index	sheet										

1 | 2

3

4

NOTES:

1. MATERIAL:

HOUSING: THERMOPLASTIC WITH GLASS FIBER, UL94V-0, COLOR IN BLACK.

CONTACTS: COPPER ALLOY.

2. FINISH:

CONTACTS: GOLD PLATING ON CONTACT AREA, 100u"MIN. TIN/LEAD OR MATTE TIN (LEAD FREE OPTION) PLATING ON SOLDER TAILS, 50u"MIN. NICKEL UNDERPLATING OVER ALL.

3. DURABILITY: 50 CYCLES.

4. RoHS COMPATIBLE PRODUCT SPECIFICATIONS

a. PLATING: "LF" MEANS THE PRODUCT IS LEAD FREE, 2.5um min. MATTE PURE TIN OVER 1.27um MIN. NICKEL UNDERPLATE.

b. MANUFACTURING PROCESS COMPATIBILITY: THE HOUSING WILL WITHSTAND EXPOSURE TO 260C±5C SOLDER BATH TEMPERATURE FOR 5 SECONDS IN A WAVE SOLDER APPLICATION WITH A 1.60MM THICK CIRCUIT BOARD.

PRODUCT NUMBER CODE

10063960 - X X X X 0 T L F

LEAD FREE

PACKAGING OPTIONS  
T-TRAY PACKAGING

RESERVE

HOUSING COLOR OPTIONS  
1-BLACK

PEGS OPTIONS  
0-PLASTIC PEGS

TERMINAL PLATING OPTIONS  
0-50u" Ni UNDERPLATE

30u" Au CONTACT AREA

100u" TIN TAIL AREA -----COMPATIBLE RoHS

1-50u" Ni UNDERPLATE

15u" Au CONTACT AREA

100u" TIN TAIL AREA -----COMPATIBLE RoHS

2-50u" Ni UNDERPLATE

GOLD FLASH CONTACT AREA

100u" TIN TAIL AREA -----COMPATIBLE RoHS

TAIL LENGTH OPTIONS

DIM "D"	SUGGESTED PCB THICKNESS
1 3.10	2.36±0.10
2 2.54	1.56±0.10

motl. code			tolerances unless otherwise specified		CUSTOMER COPY		title		product family		code	
lfr	ecn no	dr	date	linear	.XX ±.38	projection	MM	PCI-E 230P CARD EDGE	PCI	code	sheet	4 of 4
A				.XXX ±.10	0° ±2°							
				angles								
				dr	JASON HSU 11/30/05							
				enfr	JASON HSU 11/30/05							
				chr	STERLING LIN 11/30/05							
				appd	HC LIU 11/30/05							
sheet	revision											
index	sheet											

1 | 2

3

4

ACAD

code code  
22526