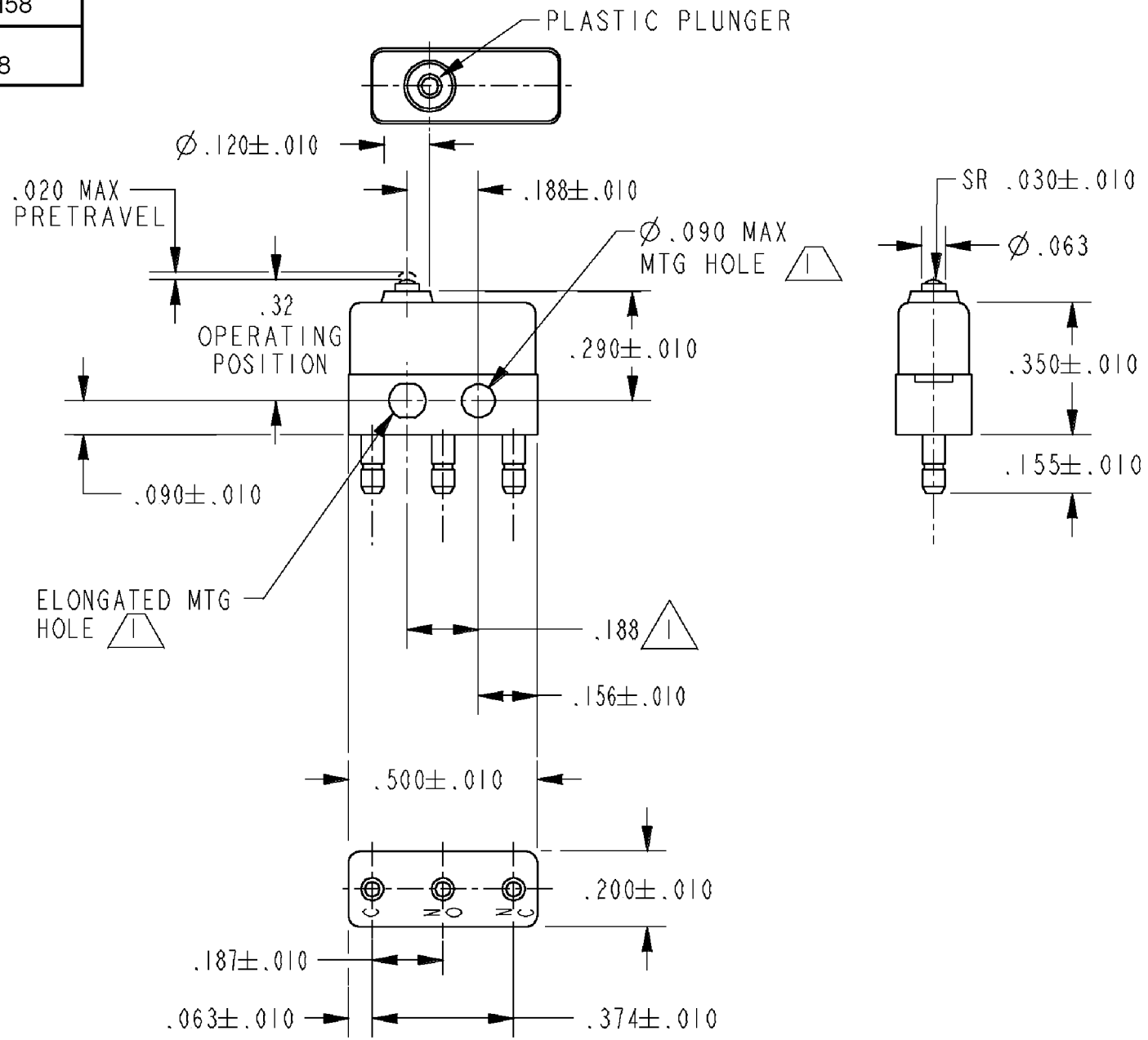


HONEYWELL
PART NUMBER
11SX55-H58
PRODUCT CODE
VDJ2208

REV	DOCUMENT	CHANGED BY	CHECK
3	0038448	VS 28APR08	BLR



- NOTES
- 1 MOUNTING HOLES WILL ACCEPT PINS OR SCREWS OF Ø.087 MAX ON .188±.002 CENTERS
 - 2 PLATED TERMINALS WILL ACCEPT "AMP INC." Ø.058 PIN RECEPTACLES
 - 3 SWITCH WILL WITHSTAND TEMPERATURE OF 250°F
 - 4 DIFFERENTIAL TRAVEL TARGET RANGE - ENTIRE ORDER WILL BE SHIPPED EXCLUDING DEAD BREAK MORE THAN .0003

RELEASE NO.	201829
REPLACES	X112773-SX

CHARACTERISTICS 4

OPERATING FORCE - - - 3.5 OZ MAX

RELEASE FORCE - - - .75 OZ MIN

DIFFERENTIAL TRAVEL - - .0006-.0010

OVERTRAVEL - - - .004 MIN

ELECTRICAL DATA

CONTACT ARRANGEMENT SPDT			
	28 VOLTS DC RATING		115 VOLTS AC, 60 CPS
	SEA LEVEL	50,000 FT	SEA LEVEL
INDUCTIVE	3 AMP	2 AMP	5 AMP
RESISTIVE	5 AMP	4 AMP	5 AMP

APPROVALS

KEMA, CE	5A 250 V - T125	5E4	CE
UL, CSA	5A 250 VAC	UL	BRAND L4L

DESIGN UNITS: INCH

TOLERANCES UNLESS NOTED:

NO PLACE	X	±
ONE PLACE	.X	±
TWO PLACE	.XX	±
THREE PLACE	.XXX	±
FOUR PLACE	.XXXX	±
ANGLES		±

0.030

0.015

0.005

THIRD ANGLE PROJECTION

DRAWN	SPK	12FEB08
CHECK	RJ	12FEB08
THIS DRAWING COVERS A PROPRIETARY ITEM AND IS THE PROPERTY OF HONEYWELL. THIS DRAWING IS NOT TO BE COPIED OR USED WITHOUT THE PERMISSION OF HONEYWELL.		
INTERPRET PER ANSI Y14.5M-1982 OTHER HONEYWELL ENGINEERING STANDARDS MAY APPLY		
RASTER		

Honeywell

TITLE

SWITCH - BASIC

SIZE	TYPE	DRAWING NAME	REV
B	I	11SX55-H58	3
SCALE	-	WEIGHT:.003 LB MAX	SHEET 1 OF 1