

4

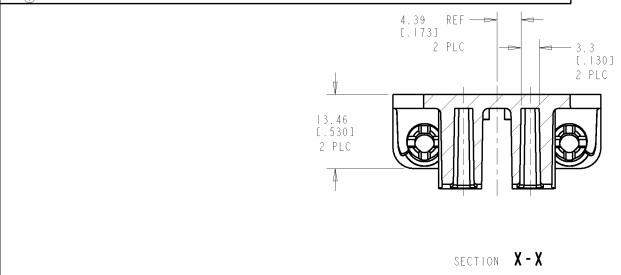
3

2

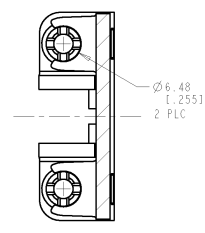
1

THIS DRAWING IS UNCLASSIFIED
(C) COPYRIGHT © BY AMP INCORPORATED. ALL RIGHTS RESERVED. RELEASED FOR PUBLICATION

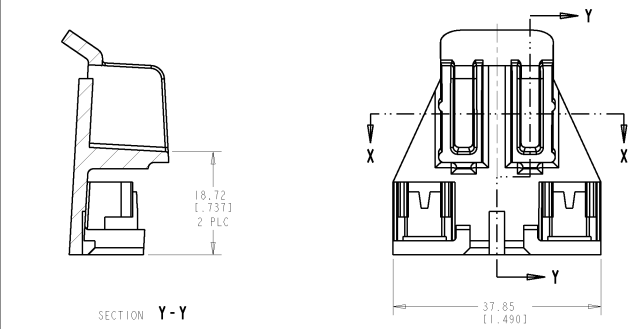
REV	DATE	DESCRIPTION	DATE	BY	APPD
0		RELEASED	09/04/88	AV	VR
A		REVISED PER EC 0651 0000 98	10/04/88	AV	VR
A1		REVISED PER ECD-09-027197	10/06/09	KK	AEG



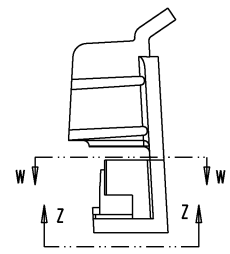
SECTION X-X



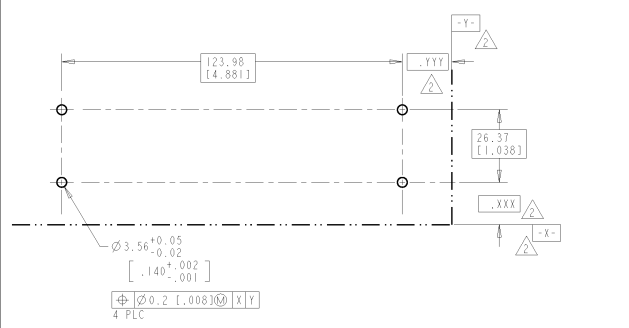
SECTION W-W



SECTION Y-Y

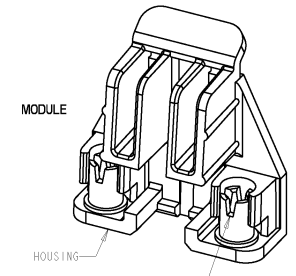


VIEW Z-Z



RECOMMENDED PC BOARD LAYOUT
 RECOMMENDED THICKNESS 1.57±0.15 [0.062±0.006]
 SCALE 1:1

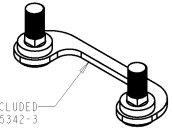
- ⚠ RETENTION MODULE: POLYCARBONATE, BLACK, UL 94-V0 RATED; SLOTTED CAPTIVE FASTENER: BRASS-COPPER ALLOY.
- ⚠ DATUM AND BASIC DIMENSION ESTABLISHED BY CUSTOMER.
- ⚠ KIT CONSISTS OF 2 MODULES, 2 MODULES ARE REQUIRED FOR ONE PROCESSOR.
- ⚠ CONSISTS OF ONLY ONE MODULE, 2 MODULES ARE REQUIRED FOR ONE PROCESSOR.
- ⚠ OBSOLETE PARTS: OBSOLETE CIS STREAMLINING PER D.RENAUD/D.SINISI



MODULE

HOUSING

CAPTIVE FASTENER 6-32UNC-2B, SLOTTED QTY 2 PER MODULE



STUD BRIDGE, 2 INCLUDED WITH KIT 145342-3 SCALE 2:1

OBSELETE	DESCRIPTION	PART NO
⚠	2 MODULES WITH FASTENERS AND 2 STUD BRIDGES	145342-3
⚠	1 MODULE WITH FASTENERS	145342-2
⚠	2 MODULES WITH FASTENERS	145342-1

DIMENSIONS:		QTY	DESCRIPTION	PART NO
mm(INCH)	mm(INCH)			
0 PLC	0	2	RETENTION MODULE KIT WITH CAPTIVE FASTENERS	
1 PLC	1	2		
2 PLC	2	2		
3 PLC	3	2		
4 PLC	4	2		
ANGLES				
INTERNAL				
FINISH				

AMP Incorporated Horrisburg, PA 17105-3600	DATE: 10/07/98	DRAWING NO: 145342	RESTRICTED TO:
SCALE: 2:1			SHEET 1 OF 1
CUSTOMER DRAWING			REV A1