

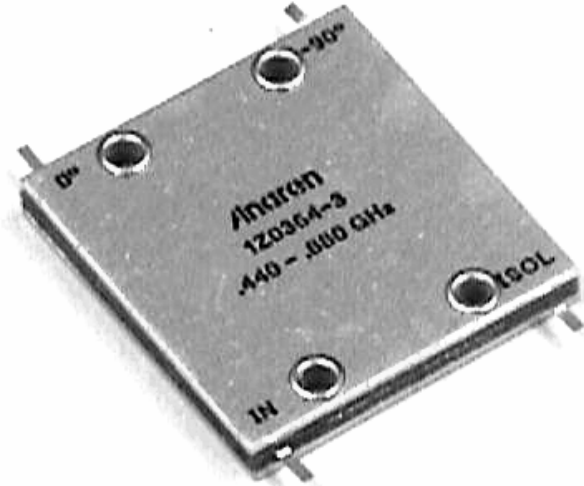
Hybrid Couplers High Power 3 dB, 90°

Applications

- Microstrip Circuits
- Power Amps
- Dividers/Combiners
- Switch Networks
- Balanced Detectors
- Antenna Feeds

Features

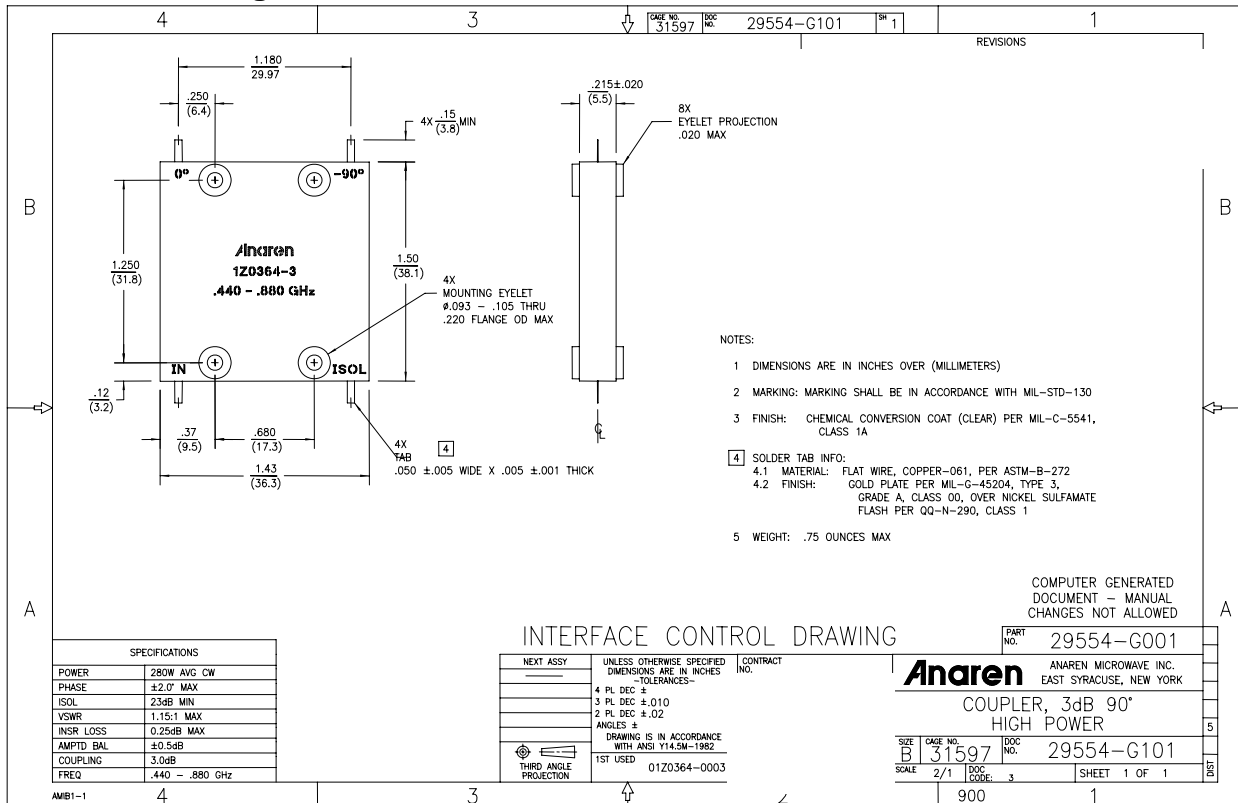
- 0.44 – 0.88 GHz
- 2 – Way power Split
- Welded Tab mount
- Reliable Performance
- Handles 280 Watts
- Meets MIL-E-5400 Class 3 Requirements



NOTES: Anaren Power rating applies when solder tab/coupler interface has been conformally coated.

Electrical and Mechanical Specifications subject to change without notice.

Outline Drawing

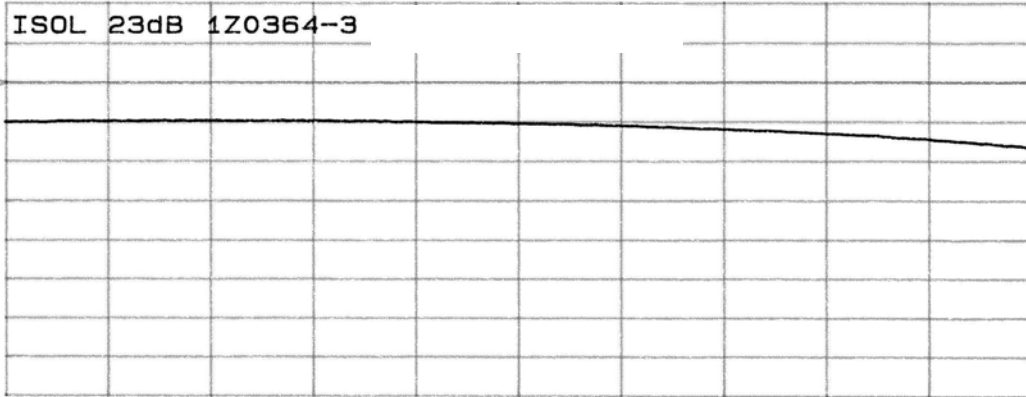


Typical Test Data Plots

CH1 MEM 10g MAG 5 dB/ REF -23 dB

ISOL 23dB 1Z0364-3

Cor

CH2 S₂₁ &M 10g MAG .5 dB/ REF -3.25 dB

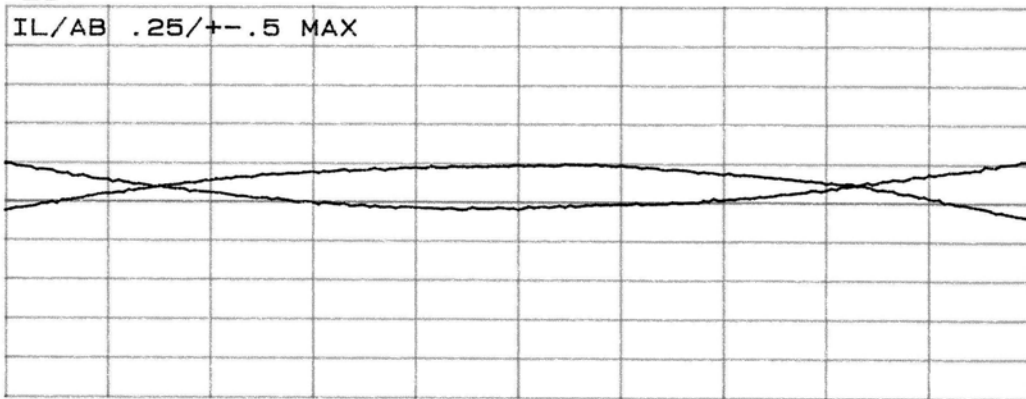
IL/AB .25/+-.5 MAX

Cor

x2

START 440.000 000 MHz

STOP 880.000 000 MHz



Mouser Electronics

Authorized Distributor

Click to View Pricing, Inventory, Delivery & Lifecycle Information:

[Anaren:](#)

[1Z0364-3](#)