

MICRO SWITCH

A DIVISION OF MINNEAPOLIS-HONEYWELL REGULATOR COMPANY
 FREEPORT, ILLINOIS

FED. MFR. CODE 91929

SWITCH-BASIC

CATALOG LISTING
1SE1-2

(M) 1SE1-2
 ISSUE 4

1SE1-2
 PAGE 1 OF 1

M

DRAWING
 NUMBER

10

10

ISSUE

X

REPLACES

RELEASE NO.

CHECK

REVISIONS

A	CO16449
D A W 28 DEC 61	
B	CO-34213
J A L 24 SEPT 74	
C	CO 51463F
S L B 9 NOV 82	
D	CO57041A
C J H 2 MAR 85	
E	CO 174176
T S M 15 JAN 93	
F	CO94274
D L M MAR 99	

CHECK

27 FEB 82

27 FEB 82

27 FEB 82

27 FEB 82

27 FEB 82

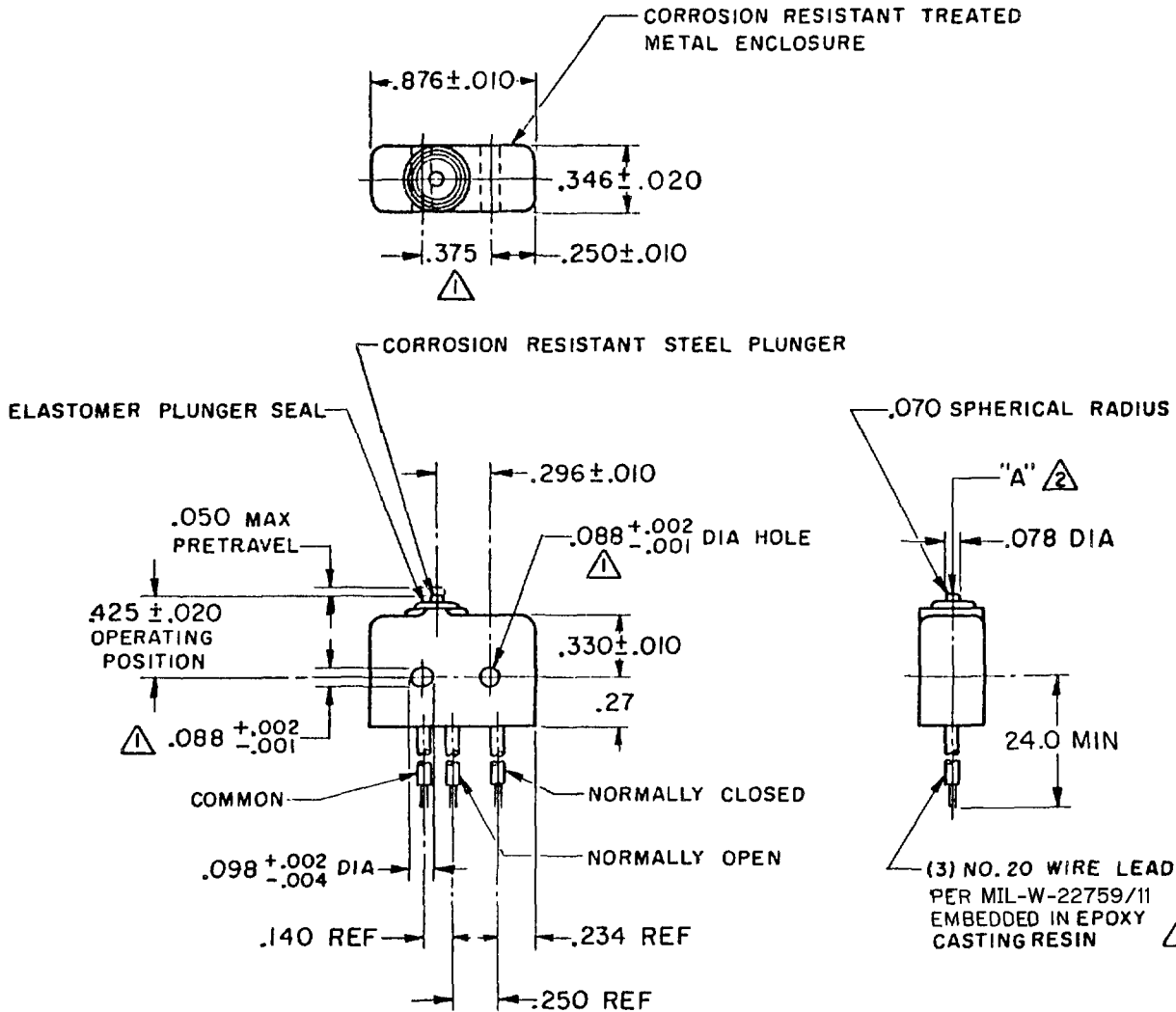
27 FEB 82

27 FEB 82

27 FEB 82

27 FEB 82

27 FEB 82



NOTE -

- ① - MOUNTING HOLES WILL ACCEPT $.087$ MAX DIA PINS OR SCREWS ON $.375 \pm .002$ CENTERS
- ② - ACTUATION IN LINE WITH ARROW "A" IS RECOMMENDED
- ③ - WEIGHT OF SWITCH ONLY IS $.26$ OZ MAX. WEIGHT OF SWITCH WITH WIRE LEADS IS 1.02 OZ MAX
- ④ - WIRE LEADS MARKED WITH CIRCUIT IDENTIFICATION AND WIRE GAGE (COMMON - C-20, NORMALLY OPEN - NO-20, ETC.) PER MIL-W-5088

THIS DRAWING COVERS A PROPRIETARY ITEM AND IS THE PROPERTY OF MICRO SWITCH, A DIVISION OF MINNEAPOLIS-HONEYWELL REGULATOR CO. THIS DRAWING IS NOT TO BE COPIED OR USED WITHOUT THE APPROVAL OF MICRO SWITCH.

CHARACTERISTICS	ELECTRICAL DATA	SCALE FULL
OPERATING FORCE ----- 5-17 OZ	CONTACT ARRANGEMENT S P D T	DO NOT SCALE PRINT
RELEASE FORCE ----- 4 OZ MIN	250 VAC ----- 5 AMP	UNLESS OTHERWISE SPECIFIED DIMENSIONS ARE IN INCHES TOLERANCES ARE:
RELEASE TRAVEL ----- .004 MIN	30 VOLTS DC RATING	
DIFFERENTIAL TRAVEL ----- .004 MAX	INDUCTIVE ----- SEA LEVEL ----- 3 AMP	ONE PLACE (.0) $\pm .030$
OVERTRAVEL ----- .003 MIN	50,000 FT ----- 2.5 AMP	TWO PLACE (.00) $\pm .015$
	RESISTIVE ----- SEA LEVEL ----- 5 AMP	THREE PLACE (.000) $\pm .008$
	50,000 FT ----- 5 AMP	ANGLES \pm
	MAXIMUM INRUSH ----- 24 AMP	WEIGHT ③

FORMTEK

FO-50378

DRAWN

D A W 28, DEC 61

CHECK