

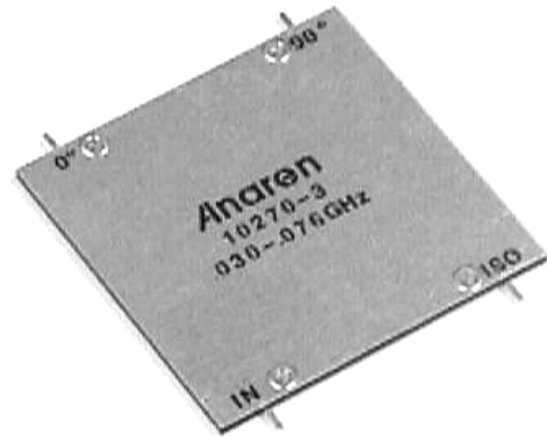
Hybrid Couplers 3 dB, 90°

Applications

- Microstrip Circuits
- Dividers/Combiners
- Switch Networks
- Balanced Detectors
- Antenna Feeds

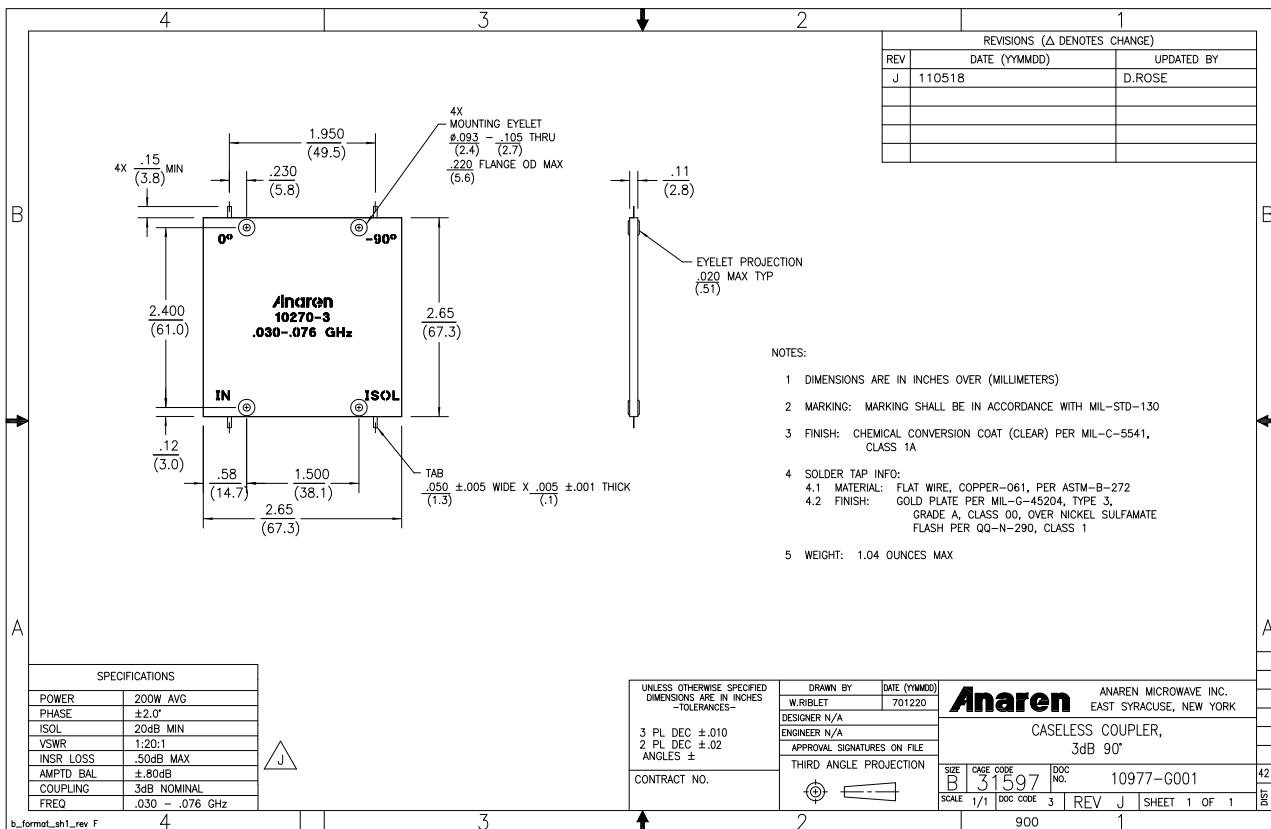
Features

- 0.03 – 0.076 GHz
- Welded Tab mount
- Reliable Performance
- Handles 200 Watts
- Meets MIL-E-5400 Class 3 Requirements

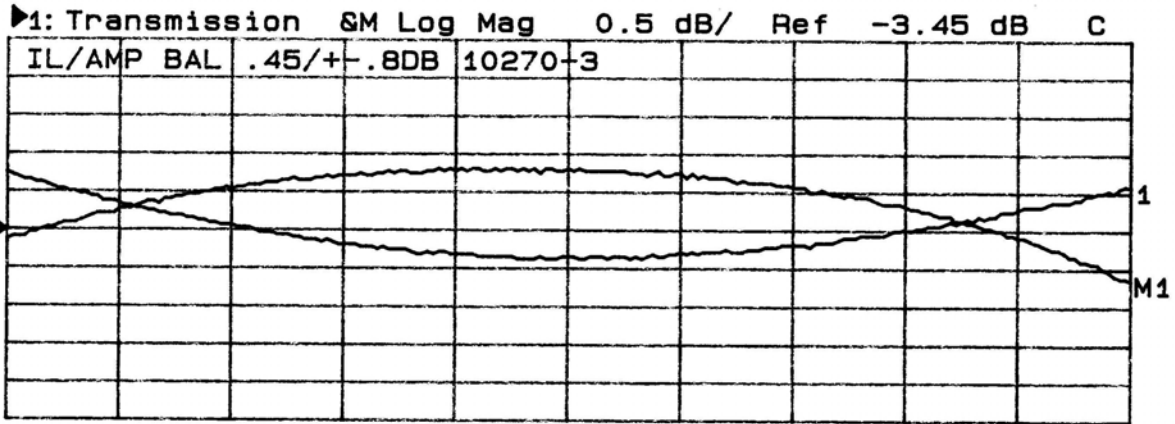


NOTES: Anaren Power rating applies when solder tab/coupler interface has been conformally coated.
Electrical and Mechanical Specifications subject to change without notice.

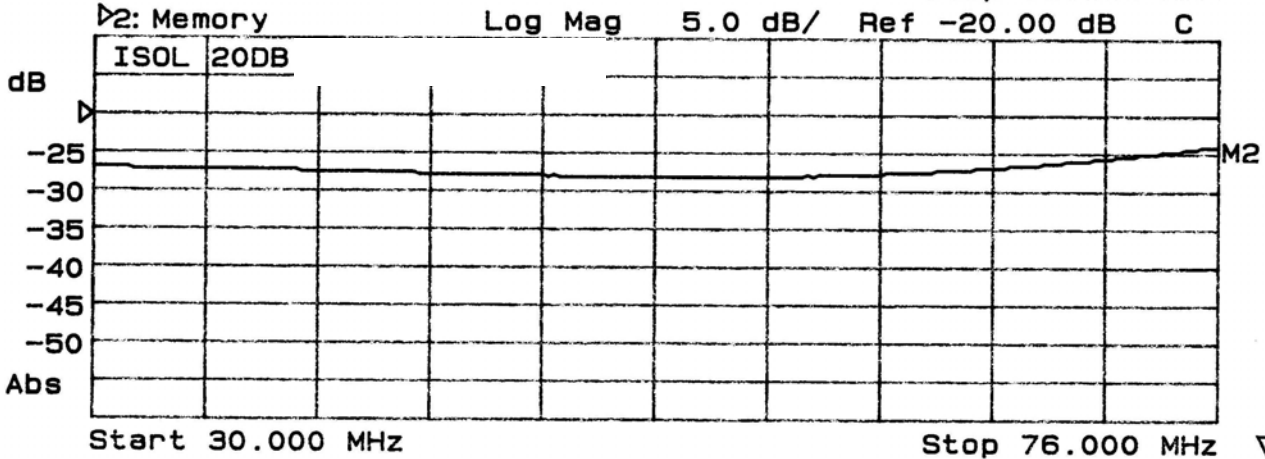
Outline Drawing



Typical Test Data Plots



Start 30.000 MHz Stop 76.000 MHz



Mouser Electronics

Authorized Distributor

Click to View Pricing, Inventory, Delivery & Lifecycle Information:

[Anaren:](#)

[10270-3](#)