

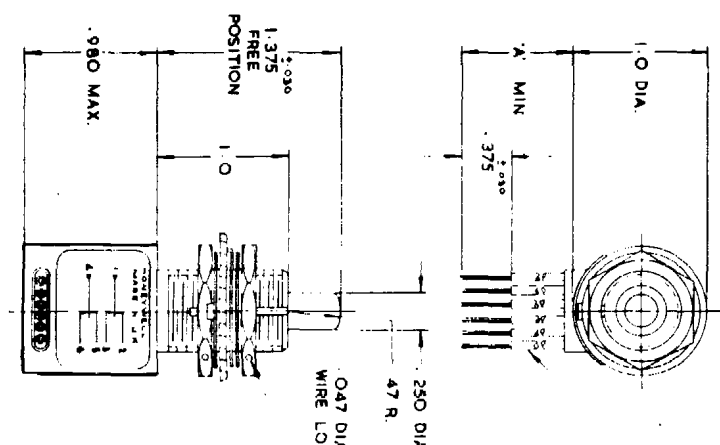
# Honeywell

## SWITCH-ENCLOSED

LEN SERIES  
CHART 10

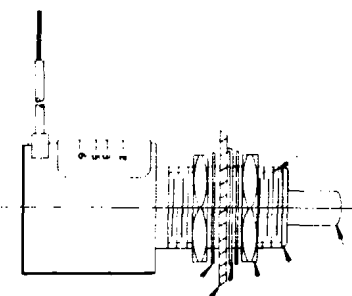
LEN SERIES  
CHART 10

RELEASE IN M.S. 1730.

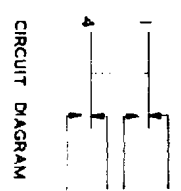


(6) NO. 20 UNI-FLEXEGLAS CABLE PER ES.2011  
MARKED WITH CIRCUIT IDENTIFICATION (-2-3 ETC.)

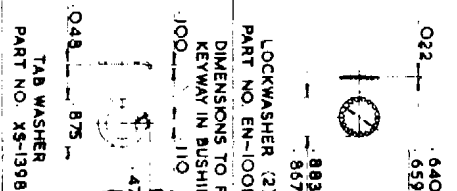
.072 WIDE X .038 DEEP KEYWAY  
TO WITHIN .250 OF SHOULDER



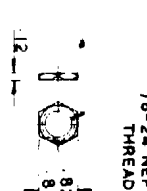
CATALOGUE LISTING	REL. NO.	ISSUE	DIMENSION A	CABLE TYPE
LEN-8N19	M.S.	1	96.00	Flexiglas Per MIL 2011
LEN-14N19	M.S.	1	78.00	Flexiglas Per MIL 2011
LEN-8N19	M.S.	3	96.00	Flexiglas Per MIL 2011
LEN-14N19	M.S.	3	168.00	Flexiglas Per MIL 2011



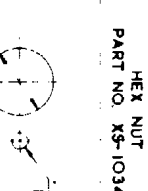
CIRCUIT DIAGRAM



LOCKWASHER (2)  
PART NO. EN-10013



TAB WASHER  
PART NO. XS-19982



HEX NUT  
PART NO. XS-10349

**NOTE**

- 1-STAINLESS STEEL CONSTRUCTION - SANDBLAST FINISH;
- 2-UNIT MEETS IMMERSION TEST REQUIREMENTS OF MIL-E-5272A PROCEDURE 1
- 3-CONTACTS OPEN AND CLOSE WITHIN .010 PLUNGER TRAVEL
- 4-END OF WIRES ARE SOLDER DIPPED
- 5-CATLIST METAL STAMPED ON BOTTOM OF SWITCH
- 6-WEIGHT OF SWITCH ONLY IS 0.1815MAX WEIGHT OF CONDUCTOR GROUP OR CABLE IS 0.0075 1.88 MAX. PER FOOT.
- 7-LEAD WIRES APPROPRIATELY MARKED TO SHOW LEAD IDENTIFICATION AND WIRE SIZE

ELECTRICAL DATA		ENVIRONMENTAL		MATERIALS	
VOLTAGE		RATING IN AMPERES		DO NOT SCALE PRINT	
(2) 5PDT		(2) 010 MIN			
SEA LEVEL		TOLERANCES ARE		UNLESS OTHERWISE SPECIFIED	
.00000 FT		FRACTIONS ARE		FRACTIONS ARE	
		TWO PLACES (00)		TWO PLACES (00)	
		THREE PLACES (000)		THREE PLACES (000)	
		SEE NOTE 6			

HONEYWELL CONTROLS LTD., GLENVIEW WOODBURY & NEWHOSE LANARKSHIRE