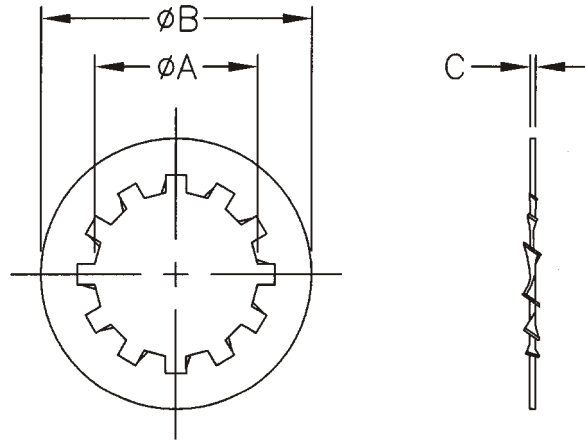

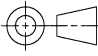


1. PART NUMBER AND CHARACTERISTICS



TE Part No	Rev	Screw Size	A	B	C
986794-1	O	#2	.089 - .095	.175 - .200	.010 - .015
986794-2	A	#4	.115 - .123	.255 - .270	.015 - .019
986794-3	B	1/2	.512 - .530	.867 - .900	.037 - .045
986794-4	D	9/16	.576 - .596	.957 - .985	.037 - .045

1. Shall comply with ASME B18.21.1
2. RECOMMENDED MANUFACTURER  
None

<b>COMMERCIAL ITEM SPECIFICATION</b>		MATERIAL 410 Stainless Steel							
		FINISH -----							
© 2009 Tyco Electronics Corporation, Harrisburg, PA All International Rights Reserved				DIMENSIONS IN INCHES		NO <b>986794</b>	REV <b>D</b>	LOC <b>B</b>	DIST <b>31</b>
D	Add -4	JNB	28AUG09	SHEET 1 OF 1		TITLE <b>WASHER, LOCK, INTERNAL TOOTH, TYPE A</b>			
REV	ENGINEERING CHANGE	CHK	DATE						