

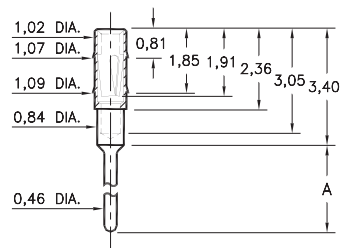
# PIN RECEPTACLES

**FOR 0,38 - 0,51 DIAMETER PINS (#11 CONTACT)  
AND 0,38 - 0,56 DIAMETER PINS (#05 & #21 CONTACTS)  
(SEE SPECIFIC CONTACT RANGE ON PAGE 251)**

## 0489

**0489-X-15-XX-11-XX-04-0**

Press-fit in 1,04 mounting hole



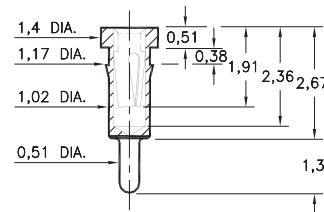
Basic Part Number	Length A
<b>0489-0</b>	2,59
<b>0489-1</b>	5,05
<b>0489-2</b>	7,59

## 0463

**0463-0-15-XX-21-XX-04-0**

Press-fit in 1,09 mounting hole.

Shell is Phosphor Bronze Alloy 544 (B2)

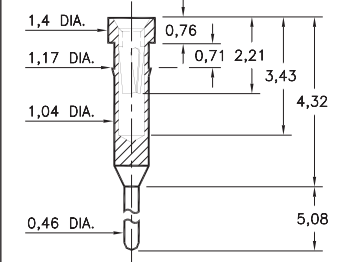


## 0466

**0466-0-15-XX-21-XX-04-0**

Press-fit in 1,09 mounting hole.

Shell is Phosphor Bronze Alloy 544 (B2)

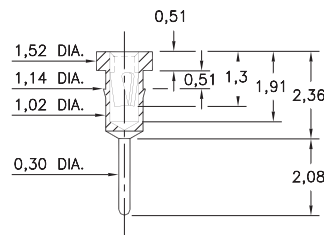


## 7491

**7491-0-15-XX-09-XX-04-0**

Press-fit in 1,07 mounting hole

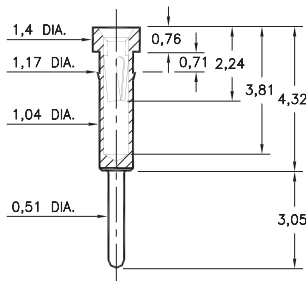
\*Contact substitution not recommended



## 0462

**0462-0-15-XX-X1-XX-04-0**

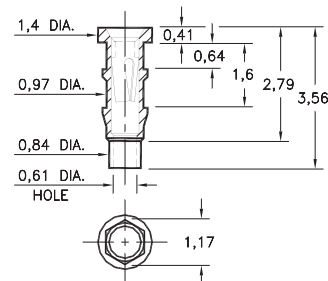
Press-fit in 1,09 mounting hole



## 0560

**0560-0-15-XX-11-XX-10-0**

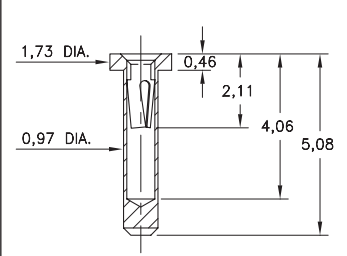
Hex press-fit in 1,09 plated through-hole



## 5552

**5552-0-15-XX-05-XX-10-0**

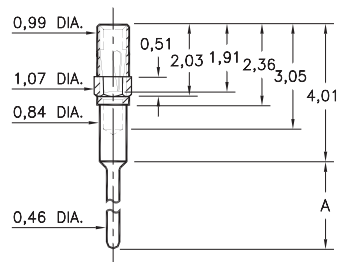
Solder mount in 1,02 min. mounting hole



## 4890

**4890-X-15-XX-11-XX-04-0**

Octagonal press-fit in 1,04 mounting hole

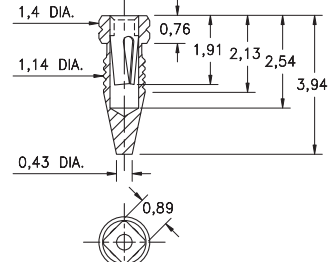


Basic Part Number	Length A
<b>4890-0</b>	2,59
<b>4890-1</b>	5,05
<b>4890-2</b>	7,59

## 4994

**4994-0-15-15-11-27-10-0**

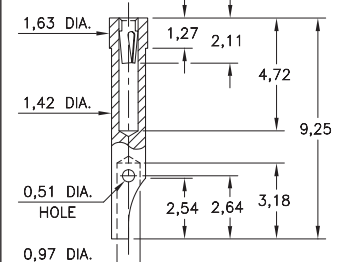
Compliant press-fit in 1,04 - 1,12 dia. mounting hole



## 4485

**4485-0-51-XX-21-XX-10-0**

Solder mount in 1,5 min. mounting hole  
For wire sizes up to 22 AWG



### SPECIFICATIONS:

**Shell Material:** Brass Alloy 360, 1/2 Hard

**Contact Material:** Beryllium Copper Alloy 172, HT

**Dimensions:** Millimeters

**Tolerances On:** Lengths: ±0,13

Diameters: ±0,051

Angles: ±2°



**ORDER CODE: XXXX - X - XX - XX - XX - XX - XX - 0**

**BASIC PART #**

**SPECIFY SHELL FINISH:**

- 01 5,08µm TIN/LEAD OVER NICKEL
- ◆ 80 5,08µm TIN OVER NICKEL (RoHS)
- ◆ 15 0,25µm GOLD OVER NICKEL (RoHS)

**SPECIFY CONTACT FINISH:**

- 02 2,54µm TIN/LEAD OVER NICKEL
- ◆ 84 2,54µm TIN OVER NICKEL (RoHS)
- ◆ 27 0,76µm GOLD OVER NICKEL (RoHS)

**SELECT CONTACT:**

**#05, #11 or #21 CONTACT (DATA ON PAGE 251)**  
(For alternate contact choices, see group A on page 248)



# Mouser Electronics

Authorized Distributor

Click to View Pricing, Inventory, Delivery & Lifecycle Information:

[Mill-Max:](#)

[0489-0-15-15-11-27-04-0](#) [0560-0-15-15-11-27-10-0](#) [0560-0-15-15-11-14-10-0](#) [0560-0-15-15-05-27-10-0](#)