



Important notes about Classic Panel Mount Indicator Catalog Pages

SCROLL DOWN TO VIEW CATALOG PAGE

This catalog page is out-of-print and is used with the understanding that the information shown could be out-of-date. In many cases, part numbers shown on this page are discontinued. Most notably, many "Complete Assembly" parts, which consist of a cap and a base, can no longer be ordered by the 14-digit ordering code. To obtain these parts, please order the cap and base part numbers separately. This process provides the components contained with the original "Complete Assembly" part number.

All Dialight Classic Panel Mount Indicators need a leading 3-digit numerical series. In some cases, this catalog will show a 2-digit series. In this case, please add a leading zero. For example, 81-0211-300 becomes 081-0211-300.

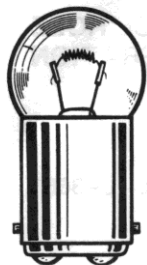
Part numbers listed on Dialight catalog pages designate parts with Red lenses. For ordering lens colors other than red, consult the chart below. In most cases, the color is dictated by the 7th digit. For example, 095-0932-003 for a green cap.

Lens Colors	
1 - Red	5 - White
2 - Green	6 - Light Yellow
3 - Yellow	7 - Clear
4 - Blue	

[Click here for a cross reference guide to assembly part numbers.](#)

[Click here to view Frequently Asked Questions concerning Panel Mount Indicators.](#)

SCROLL DOWN TO VIEW CATALOG PAGE



G-6
DOUBLE CONTACT
BAYONET BASE

See lamp ratings
on page K.

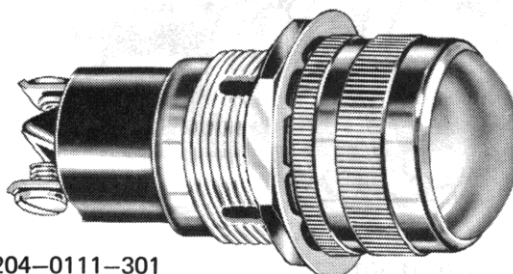
Large Incandescent Indicators

FOR MOUNTING IN 1" CLEARANCE HOLE
FOR 6 TO 32V OPERATION

These series indicator lights meet or exceed requirements of MIL-L-3661.

For materials and finishes of products in this group, see page 38D.

Recognized under the component
program of Underwriters'
Laboratories Inc.
75W., 125V.



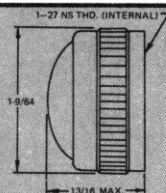
51-3204-0111-301
Convex lens

WITH SCREW-ON LENS CAPS

51 SERIES

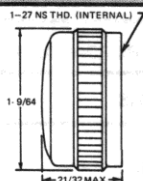
BASE PART NUMBERS

CAP PART NUMBERS



CONVEX

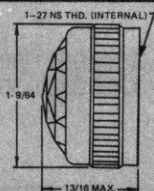
51-0111-300 back frosted
51-0131-300 unfrosted



FLAT

51-0211-300 back frosted
51-0231-300 unfrosted

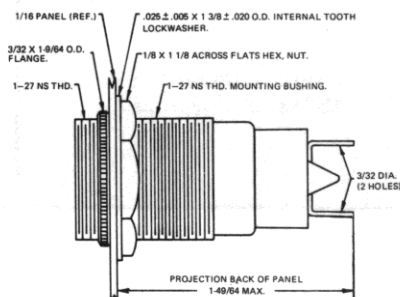
For legends on flat faced lens, see page P.



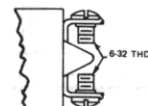
FACETED

51-0431-300 unfrosted

fixed solder



fixed screw



51-3406-01-301

51-3206-01-301

COMPLETE ASSEMBLY PART NUMBERS

51-3404-0111-301
51-3404-0131-301

51-3204-0111-301
51-3204-0131-301

51-3404-0211-301
51-3404-0231-301

51-3204-0211-301
51-3204-0231-301

51-3404-0431-301

51-3204-0431-301

Part numbers shown in gray are normally
in inventory at your Dialight Distributor.

Part numbers listed in this catalog designate products with RED lens.
For ordering lens colors other than red, consult chart on page 2D.

Mouser Electronics

Authorized Distributor

Click to View Pricing, Inventory, Delivery & Lifecycle Information:

Dialight:

[051-3206-01-303](#) [051-3202-01-300](#) [051-3202-01-301](#) [051-3402-01-303](#) [051-3402-01-301](#) [051-3206-01-300](#) [051-3206-01-301](#) [051-3202-01-303](#) [051-3406-01-301](#) [051-3202-01-203](#) [051-3402-01-300](#) [051-3406-01-300](#) [051-3206-01-203](#) [051-3206-01-807](#)