



## **Important notes about Classic Panel Mount Indicator Catalog Pages**

### **SCROLL DOWN TO VIEW CATALOG PAGE**

This catalog page is out-of-print and is used with the understanding that the information shown could be out-of-date. In many cases, part numbers shown on this page are discontinued. Most notably, many "Complete Assembly" parts, which consist of a cap and a base, can no longer be ordered by the 14-digit ordering code. To obtain these parts, please order the cap and base part numbers separately. This process provides the components contained with the original "Complete Assembly" part number.

All Dialight Classic Panel Mount Indicators need a leading 3-digit numerical series. In some cases, this catalog will show a 2-digit series. In this case, please add a leading zero. For example, 81-0211-300 becomes 081-0211-300.

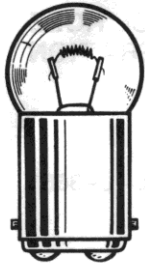
Part numbers listed on Dialight catalog pages designate parts with Red lenses. For ordering lens colors other than red, consult the chart below. In most cases, the color is dictated by the 7<sup>th</sup> digit. For example, 095-0932-003 for a green cap.

Lens Colors	
1 - Red	5 - White
2 - Green	6 - Light Yellow
3 - Yellow	7 - Clear
4 - Blue	

[Click here for a cross reference guide to assembly part numbers.](#)

[Click here to view Frequently Asked Questions concerning Panel Mount Indicators.](#)

### **SCROLL DOWN TO VIEW CATALOG PAGE**



G-6  
DOUBLE CONTACT  
BAYONET BASE

See lamp ratings  
on page K.

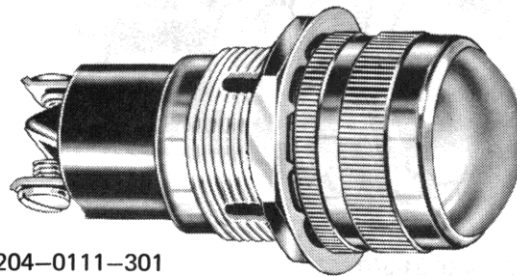
# Large Incandescent Indicators

FOR MOUNTING IN 1" CLEARANCE HOLE  
FOR 6 TO 32V OPERATION

These series indicator lights meet or exceed requirements of MIL-L-3661.

For materials and finishes of products in this group, see page 38D.

Recognized under the component  
program of Underwriters'  
Laboratories Inc.  
75W., 125V.



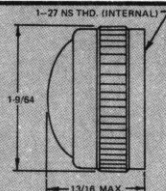
51-3204-0111-301  
Convex lens

## WITH SCREW-ON LENS CAPS

### 51 SERIES

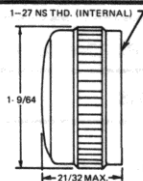
#### BASE PART NUMBERS

#### CAP PART NUMBERS



#### CONVEX

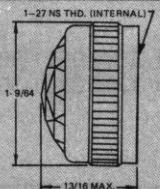
51-0111-300 back frosted  
51-0131-300 unfrosted



#### FLAT

51-0211-300 back frosted  
51-0231-300 unfrosted

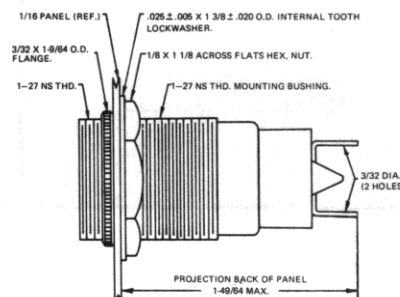
For legends on flat faced lens, see page P.



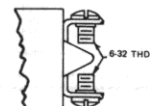
#### FACETED

51-0431-300 unfrosted

#### fixed solder



#### fixed screw



51-3406-01-301

51-3206-01-301

#### COMPLETE ASSEMBLY PART NUMBERS

51-3404-0111-301  
51-3404-0131-301

51-3204-0111-301  
51-3204-0131-301

51-3404-0211-301  
51-3404-0231-301

51-3204-0211-301  
51-3204-0231-301

51-3404-0431-301

51-3204-0431-301

Part numbers shown in gray are normally  
in inventory at your Dialight Distributor.

Part numbers listed in this catalog designate products with RED lens.  
For ordering lens colors other than red, consult chart on page 2D.

# Mouser Electronics

Authorized Distributor

Click to View Pricing, Inventory, Delivery & Lifecycle Information:

Dialight:

[051-3206-01-303](#) [051-3202-01-300](#) [051-3402-01-301](#) [051-3202-01-301](#) [051-3402-01-303](#) [051-3206-01-300](#) [051-3402-01-300](#) [051-3406-01-300](#) [051-3206-01-301](#) [051-3202-01-303](#) [051-3406-01-301](#) [051-3202-01-203](#) [051-3206-01-203](#) [051-3206-01-807](#)