

## TLN Series Telecommunications Power Fuse

170 VDC • Current-Limiting • 1 – 600 Amperes



### Specifications

<b>Voltage Rating:</b>	170 VDC
<b>Interrupting Rating:</b>	100,000 amperes
<b>Ampere Range:</b>	1 – 600 amperes
<b>Approvals:</b>	UL Recognized under the components program (File No: E71611)

### Ampere Ratings

1	15	40	80	150	300	600
3	20	45	90	175	350	
5	25	50	100	200	400	
6	30	60	110	225	450	
10	35	70	125	250	500	

Example part number (series & amperage): TLN450

### Recommended Fuse Blocks

LR250 Series  
Refer to the Blocks & Holders section of this catalog for additional information.

### Features

- 170 VDC
- Fast acting and current-limiting
- 1 to 600 amperes
- Dimensionally similar to 250V Class R fuses

**Replaces competitors' TPN and TGN Series.**

The TLN Series fuses are specifically designed for the protection of telecommunications DC power distribution circuits.

Ampere Rating	Dimensions in Inches (mm in parentheses)									
	A	B	C	D	E	F	G	H	J	K
<b>Figure 1</b>										
1 – 30	2 (50.8)	½ (12.7)	½ (12.7)	9/16 (14.3)	5/64 (2.0)	5/32 (4.0)	3/8 (9.5)	—	—	—
35 – 60	3 (76.2)	¾ (19.1)	5/8 (15.9)	13/16 (20.6)	3/32 (2.4)	3/16 (4.8)	5/8 (15.9)	—	—	—
<b>Figure 2</b>										
70 – 100	5 7/8 (149.2)	1 (25.4)	1 1/16 (27.0)	1 1/16 (27.0)	1/8 (3.2)	3/4 (19.1)	1 1/4 (31.6)	1/4 (6.4)	9/32 (7.1)	1/2 (12.7)
110 – 200	7 1/8 (181.0)	1 1/2 (38.1)	1 15/32 (37.3)	1 19/32 (40.5)	3/16 (4.8)	1 1/8 (28.6)	1 27/32 (46.8)	7/16 (11.1)	9/32 (7.1)	11/16 (17.5)
225 – 400	8 5/8 (219.1)	2 (50.8)	1 15/16 (49.2)	2 3/32 (53.2)	1/4 (6.4)	1 5/8 (41.3)	2 11/32 (59.5)	5/8 (15.9)	13/32 (10.3)	15/16 (23.8)
450 – 600	10 3/8 (263.5)	2 1/2 (63.5)	2 3/8 (60.3)	2 19/32 (65.9)	1/4 (6.4)	2 (50.8)	2 27/32 (72.2)	3/4 (19.1)	17/32 (13.5)	1 1/8 (28.6)

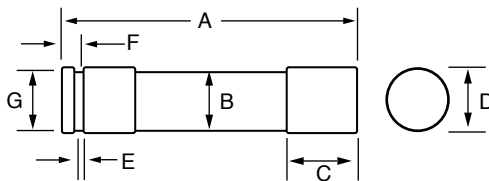


FIG. 1

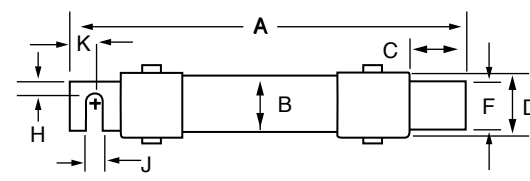


FIG. 2

# Mouser Electronics

Authorized Distributor

Click to View Pricing, Inventory, Delivery & Lifecycle Information:

## Littelfuse:

[0TLN250.X](#) [0TLN001.T](#) [0TLN100.V](#) [0TLN080.V](#) [0TLN125.X](#) [0TLN110.X](#) [0TLN045.T](#) [0TLN040.T](#) [0TLN025.T](#)  
[0TLN005.T](#) [0TLN015.T](#) [0TLN350.X](#) [0TLN070.V](#) [0TLN500.X](#) [0TLN450.X](#) [0TLN050.T](#) [0TLN200.X](#) [0TLN010.T](#)  
[0TLN006.T](#) [0TLN060.T](#) [0TLN600.X](#) [0TLN175.X](#) [0TLN300.X](#) [0TLN150.X](#) [0TLN035.T](#) [0TLN003.T](#) [0TLN090.V](#)  
[0TLN020.T](#) [0TLN225.X](#) [0TLN030.T](#) [0TLN400.X](#)