

CBO, CCK, CCL SERIES LIFT TRUCK FUSES

32-130 Vdc • 1-300 A • Fast Acting & Time Delay



Description

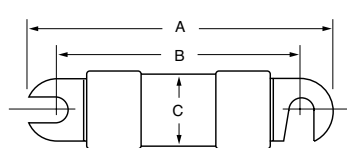
CBO fast acting, and CCK and CCL dual-element time-delay fuses are recommended for fork lift trucks and other similar battery operated equipment.

Applications

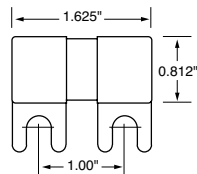
Lift trucks, scissor lifts, pallet movers, and other low voltage battery operated equipment used to move hazardous materials.

Dimensions (inches)

PART NO.	A	B	C
CCK 1-30A	3.070	2.500	0.510
CCK 35-60A	3.740	3.000	0.750
CCK 70-100A	4.460	3.500	1.00
CCK 120-200A	4.720	3.750	1.00
CCK 225-300A	4.710	3.750	1.00
CCL 30-60A	3.060	2.454	0.51
CCL 80-120A	3.38	2.70	0.75



CCK/CCL



CBO

Specifications

Voltage Ratings:	CBO: 32 Volts DC CCK: 130 Volts DC (1-100A) 72 Volts DC (120-200A) 48 Volts DC (225-300A) CCL: 125 Volts DC
Ampere Range:	1 – 300 amperes
Interrupting Rating:	10,000 A
For operating characteristics contact factory	

Ordering Information

AMPERE RATINGS CBO FAST ACTING (32 Vdc)				
10	25	20	80	—
12	30	60	100	—
15	35	70	125	—
20	40	75	150	—

AMPERE RATINGS CCK TIME-DELAY (48-130 Vdc)					
1	20	40	75	140	200
2	25	50	80	150	225
10	30	60	100	160	250
15	35	70	120	175	300

AMPERE RATINGS CCL TIME-DELAY (125 Vdc)				
30	40	60	100	—
35	50	80	120	—

SERIES	TYPE	VOLT DC	AMP	CATALOG NUMBER	ORDERING NUMBER
CBO	FAST ACTING	32	10	CBO010	OCBO010.V
CCK	TIME-DELAY	72	120	CCK120	OCCK120.V
CCL	TIME-DELAY	125	120	CCL120	OCCL120.V