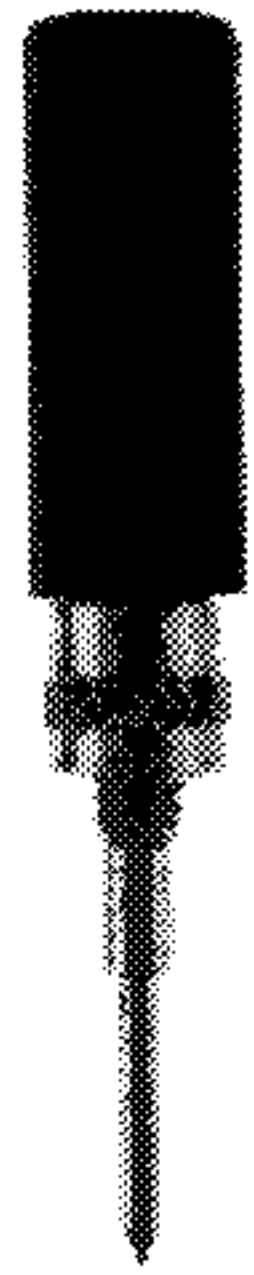


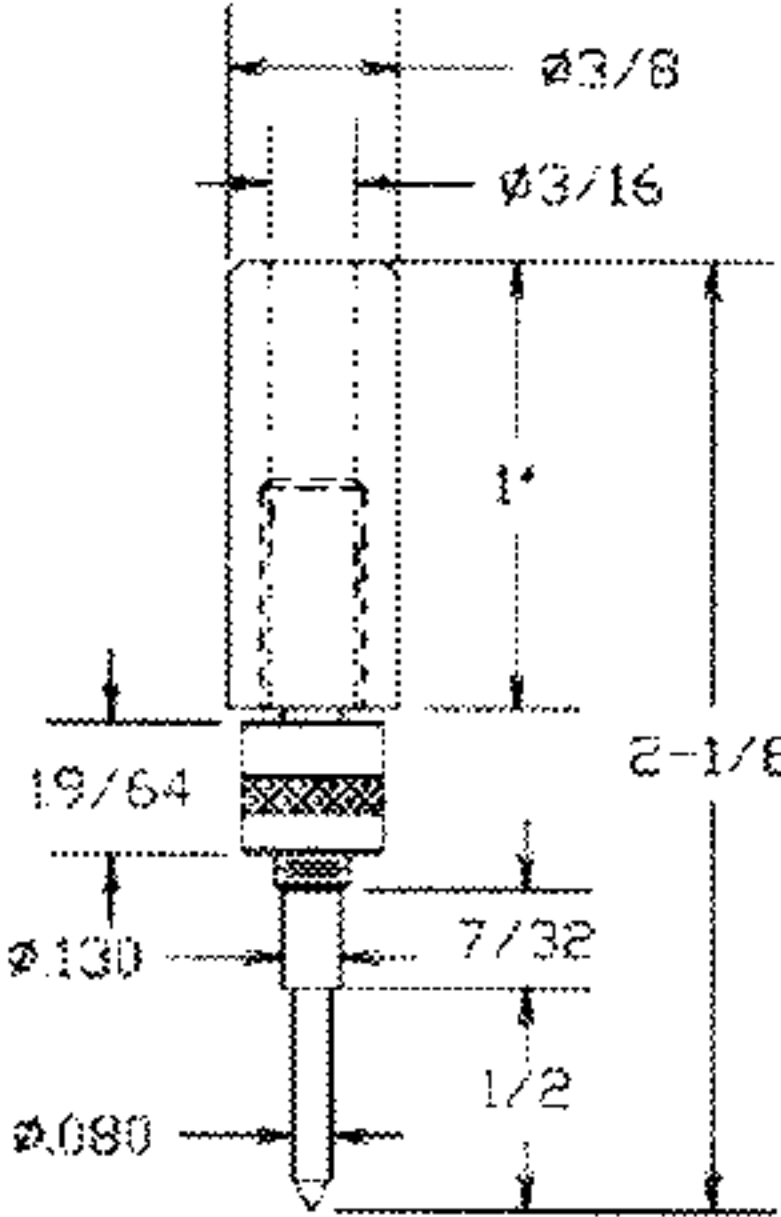
INSULATED PHONE TIP PLUGS

01-2100-1-02XX PHONE TIP PLUG FINISH COLOR INSULATED



RATED FOR 12 AMPERES
CONTINUOUS DUTY
SOLDERLESS TYPE

For standard phone tip jacks. Wire is inserted thru rear and cross holes in plug body and then wrapped around threaded portion. Threaded collar tightens down wire, Available in colors (see color chart).



COMPONENT	MATERIAL	(02) FINISH
Plug Body	Brass	Nickel
Handle	Molded Plastic	-

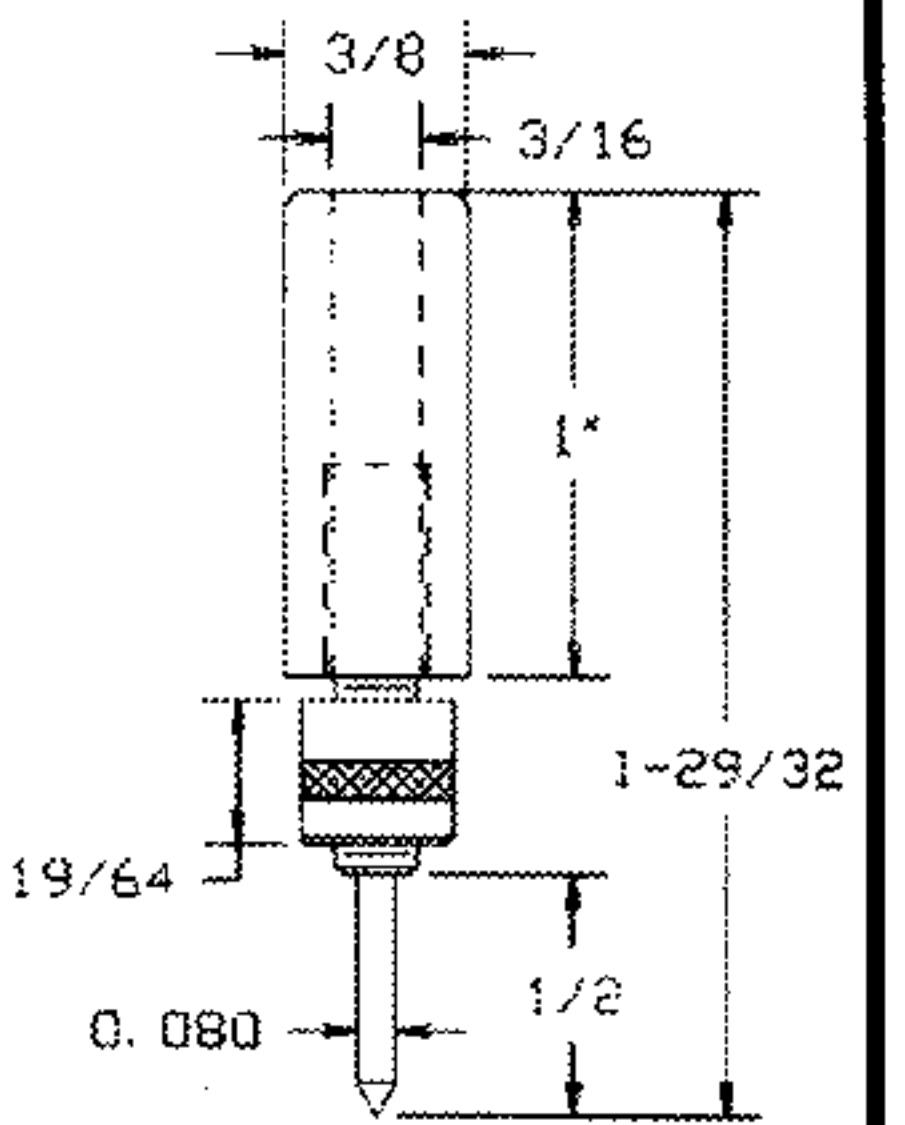
BLK	BRN	RED	ORN	YEL	GRN	BLU	PUR	GRY	WHT
10	11	12	13	14	15	16	17	18	19

01-2118-1-02XX PHONE TIP PLUG FINISH COLOR INSULATED



RATED FOR 12 AMPERES
CONTINUOUS DUTY
SOLDERLESS TYPE

For standard phone tip jacks. Wire is inserted thru rear and cross holes in plug body and then wrapped around threaded portion. Threaded collar tightens down wire, Available in colors (see color chart).



COMPONENT	MATERIAL	(02) FINISH
Plug Body	Brass	Nickel
Handle	Molded Plastic	-

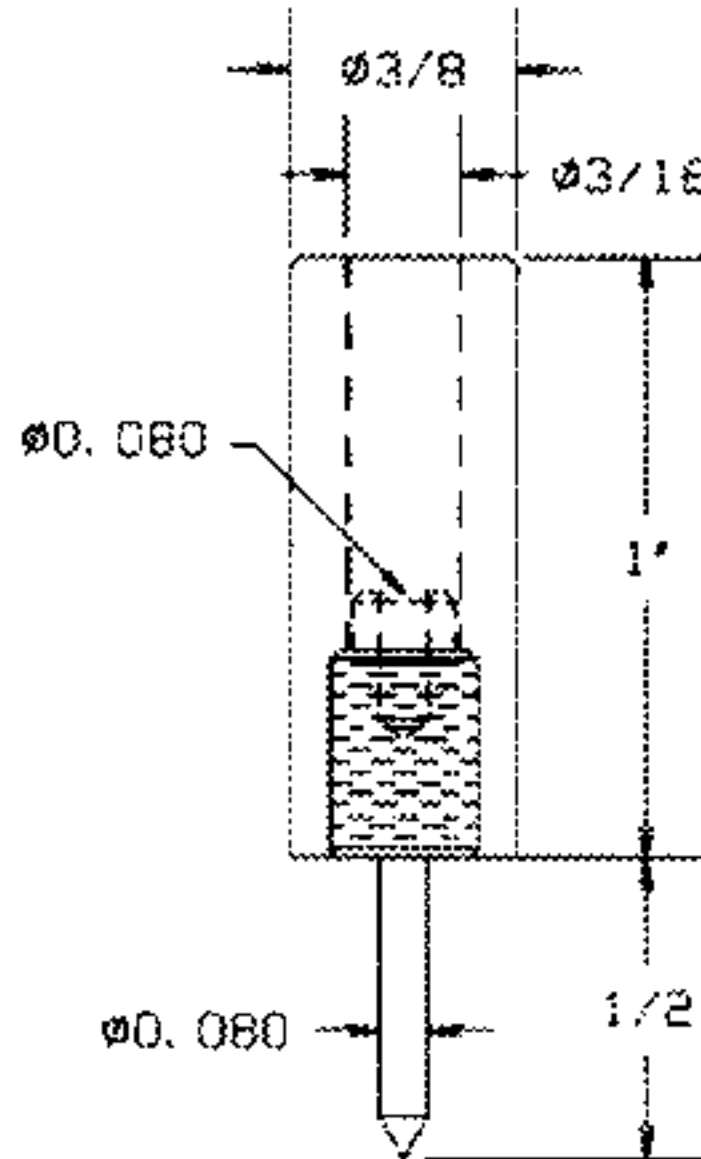
BLK	BRN	RED	ORN	YEL	GRN	BLU	PUR	GRY	WHT
10	11	12	13	14	15	16	17	18	19

01-2102-1-02XX PHONE TIP PLUG FINISH COLOR INSULATED



RATED FOR 12 AMPERES
CONTINUOUS DUTY
SOLDER TYPE

For standard phone tip jacks. No metal exposed when fully inserted eliminating the chance of shock or grounding. Available in colors (see color chart).



COMPONENT	MATERIAL	(02) FINISH
Plug Body	Brass	Nickel
Handle	Molded Plastic	-

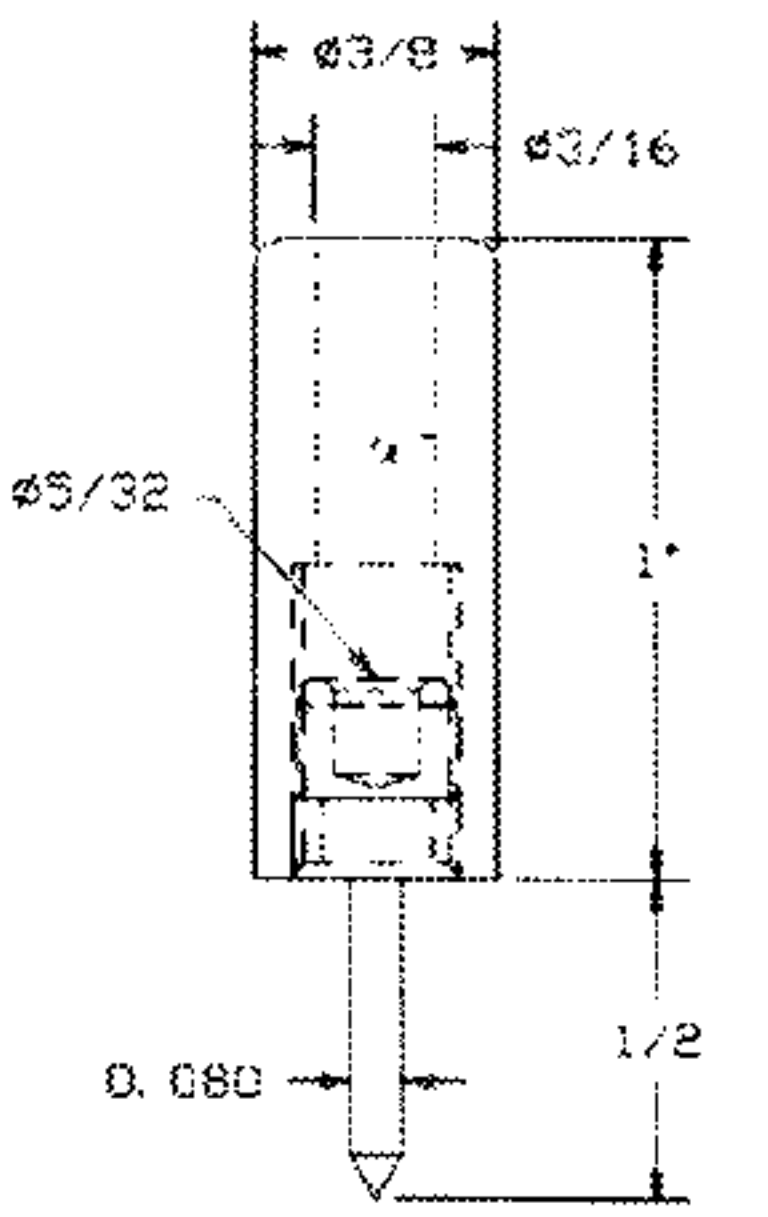
BLK	BRN	RED	ORN	YEL	GRN	BLU	PUR	GRY	WHT
10	11	12	13	14	15	16	17	18	19

01-2120-1-02XX PHONE TIP PLUG FINISH COLOR INSULATED



RATED FOR 12 AMPERES
CONTINUOUS DUTY
SOLDERLESS TYPE

For standard phone tip jacks. Wire is inserted thru rear and cross holes in plug body and then wrapped around threaded portion. No metal exposed when fully inserted eliminating the chance of shock or grounding. Available in colors (see color chart).



COMPONENT	MATERIAL	(02) FINISH
Plug Body	Brass	Nickel
Handle	Molded Plastic	-

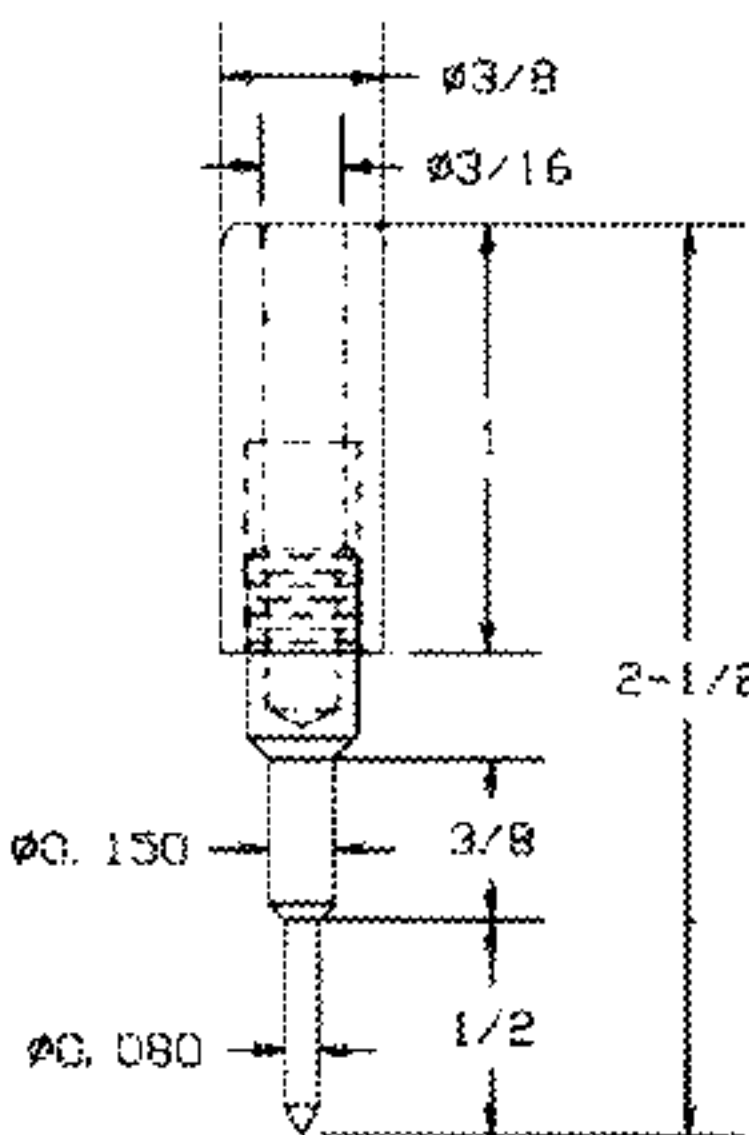
BLK	BRN	RED	ORN	YEL	GRN	BLU	PUR	GRY	WHT
10	11	12	13	14	15	16	17	18	19

01-2105-1-02XX PHONE TIP PLUG FINISH COLOR INSULATED



RATED FOR 12 AMPERES
CONTINUOUS DUTY
SOLDER TYPE

For standard phone tip jacks. Designed to accept soldering of heavy duty wire in plug body. Available in colors (see color chart).



COMPONENT	MATERIAL	(02) FINISH
Plug Body	Brass	Nickel
Handle	Molded Plastic	-

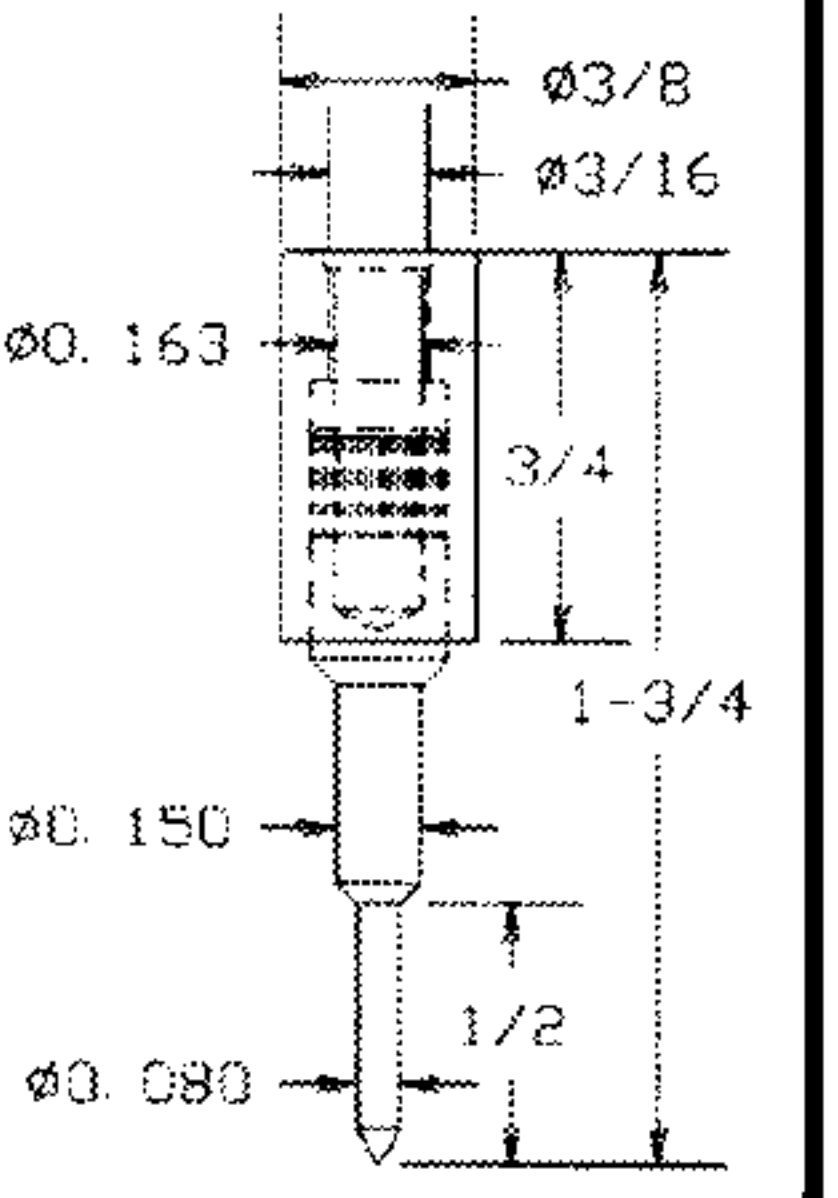
BLK	BRN	RED	ORN	YEL	GRN	BLU	PUR	GRY	WHT
10	11	12	13	14	15	16	17	18	19

01-2122-1-02XX PHONE TIP PLUG FINISH COLOR INSULATED



RATED FOR 12 AMPERES
CONTINUOUS DUTY

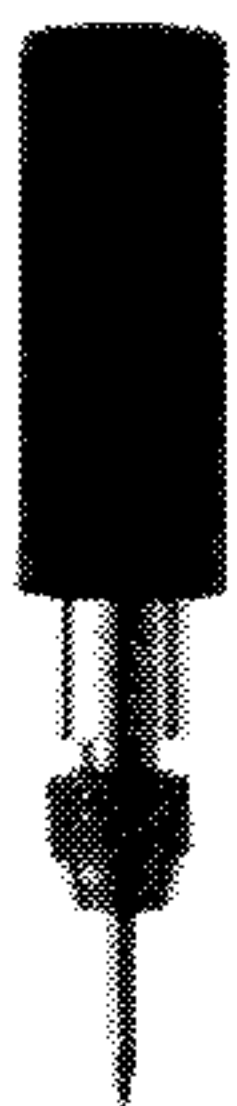
For standard phone tip jacks. Accepts standard banana plug. Available in colors (see color chart).



COMPONENT	MATERIAL	(02) FINISH
Plug Body	Brass	Nickel
Handle	Molded Plastic	-

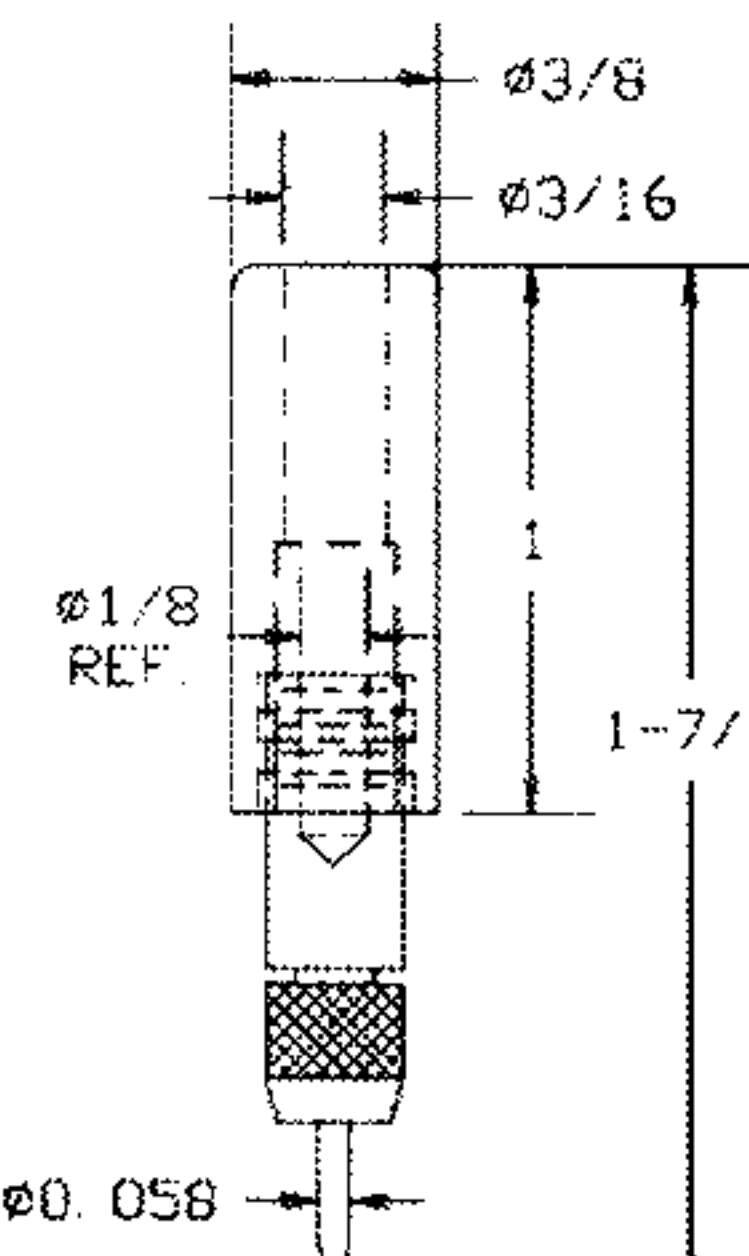
BLK	BRN	RED	ORN	YEL	GRN	BLU	PUR	GRY	WHT
10	11	12	13	14	15	16	17	18	19

01-2110-1-02XX INSULATED PLUG FINISH COLOR PHONO NEEDLE



RATED FOR 12 AMPERES
CONTINUOUS DUTY
SOLDER TYPE

Pin vise design for easy removal and replacement of needle. Available in colors (see color chart).



COMPONENT	MATERIAL	(02) FINISH
Plug Body	Brass	Nickel
Handle	Molded Plastic	-

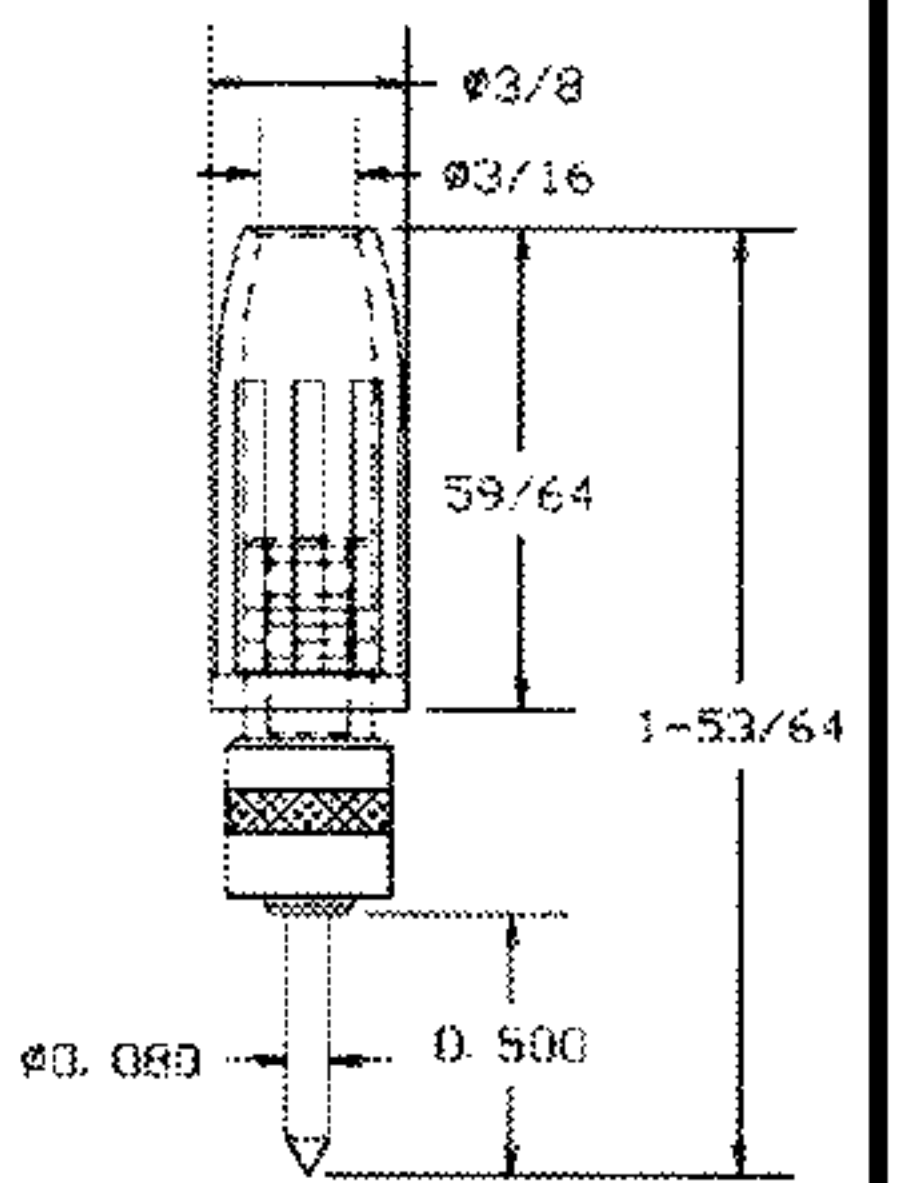
BLK	BRN	RED	ORN	YEL	GRN	BLU	PUR	GRY	WHT
10	11	12	13	14	15	16	17	18	19

01-2132-1-02XX PHONE TIP PLUG FINISH COLOR INSULATED SHORT HANDLE



RATED FOR 12 AMPERES
CONTINUOUS DUTY
SOLDERLESS TYPE

For standard phone tip jacks. Wire is inserted thru rear cross holes in plug body and then wrapped around threaded portion. Threaded collar tightens down wire. Available in colors (see color chart).



COMPONENT	MATERIAL	(02) FINISH
Plug Body	Brass	Nickel
Handle	Molded Plastic	-

BLK	BRN	RED	ORN	YEL	GRN	BLU	PUR	GRY	WHT
10	11	12	13	14	15	16	17	18	19

FOR ADDITIONAL SIZES AND MATERIALS, CONTACT FACTORY

